



3 ROOM APARTMENT, 5300 HALLWANG

Spacious garden apartment in Hallwang near Salzburg

Object number: KJIE1

[View and rent online](#)

Is situated in a wonderfully quiet location in the north of the city of Salzburg at the end of a cul-de-sac. The A1 motorway is within easy reach, the old town can be reached in 10 minutes by car, on foot, by bike or by trolleybus. 2 spacious garages

Period	05/04/ - 05/05/2026
Number of persons	2
Total incl. VAT.	€ 3.456,90
Security deposit	€ 2.600,00



Living space

135m²



Maximum occupancy

7 Persons



Complete accommodation [?]

1 Private bathroom 2 Separated bedrooms 1 Living-Sleepingroom



Ground floor



Check-in

09:00 - 18:00 Clock



Check-out

09:00 - 18:00 Clock

Sleeping options

Bedroom 1



1x Double bed (2 m x 2 m)

Bedroom 2



1x Single bed

Living & Sleeping



2x Double bed (2 m x 2 m)

Descripton of accommodation

From the hallway, a small anteroom on the right leads to the east-facing bedroom and bathroom. To the left is the large living/dining area (approx. 53m²) with tiled stove and access to the covered outdoor seating area and the usable garden with large terrace.

The dining area leads to the fully equipped kitchen and from there to the pantry (with window) and the 3rd room. This can be used as a bedroom or office. The well-tended garden is located around the south-west facing patio. The flat is very sunny and pleasantly cool in summer. Alarm system.

There is also space for bicycles, ski and golf equipment in the garage. Rehearsal room for music can be requested.

Equipment & Features

Basic equipment

- Terrace
- Garden sharing
- TV
- Bedclothes
- Private toilet
- Vacuum cleaner
- Cleaning utensils
- Loggia
- Internet/Wifi
- Private washing machine
- Towels
- Garage
- Iron & ironing board
- Hairdryer

Fireplace

- Tiled stove

First supply

- Toilet paper
- Soap
- Fridge filling on request
- shampoo
- Nespresso capsules

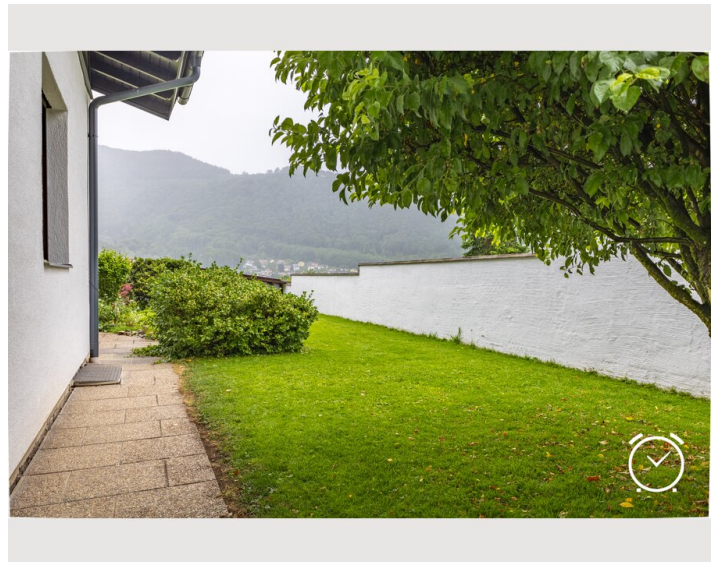
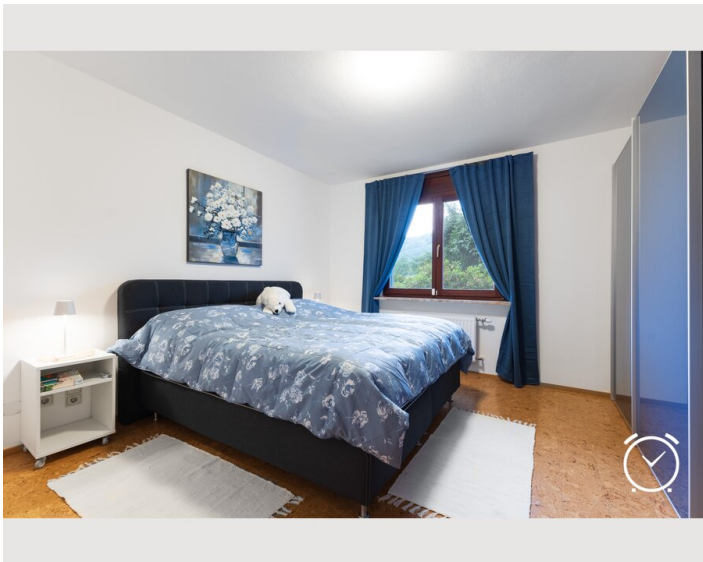
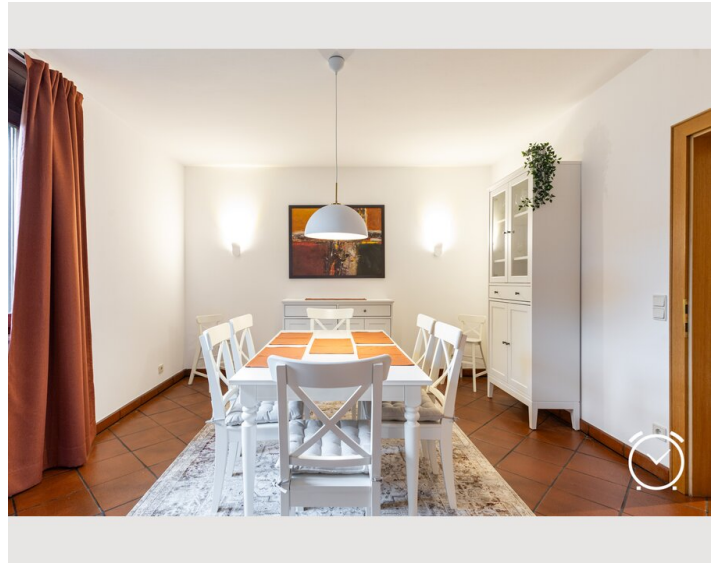
Kitchen

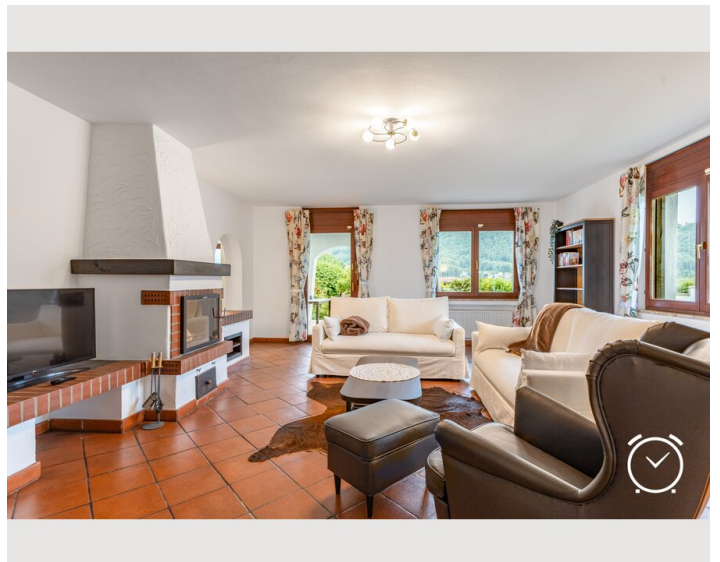
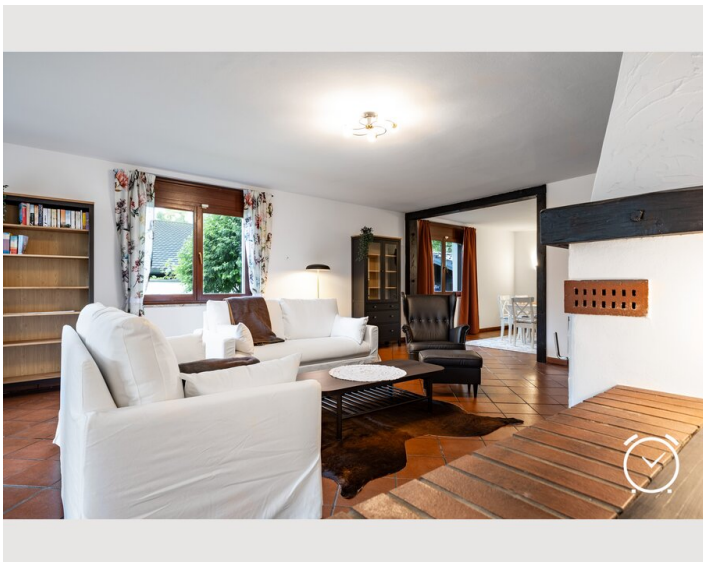
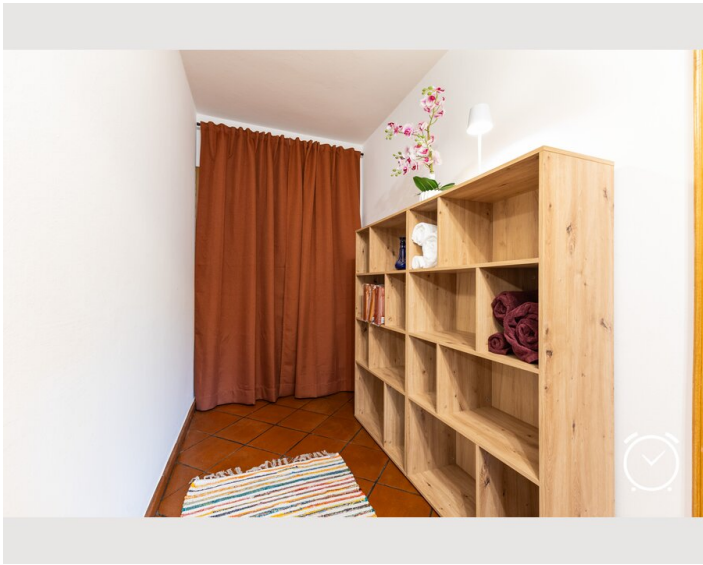
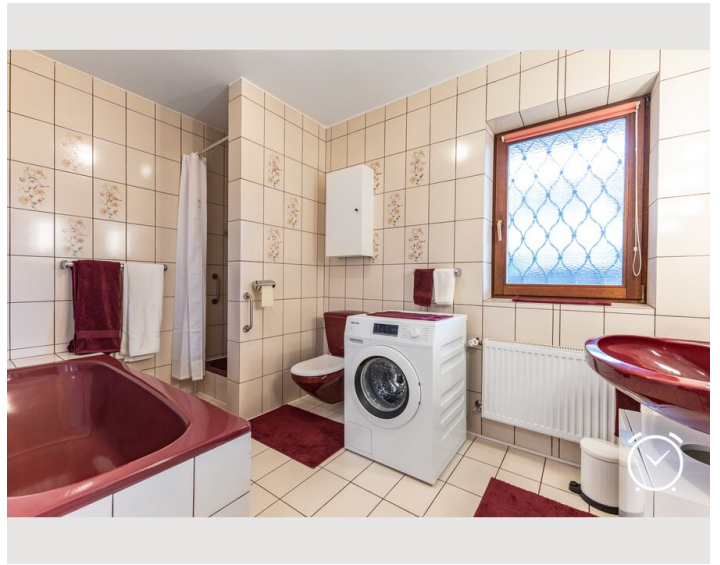
- Private kitchen
- Glasses/Tableware
- Dishwasher
- Cooking utensils
- Espresso machine
- Microwave

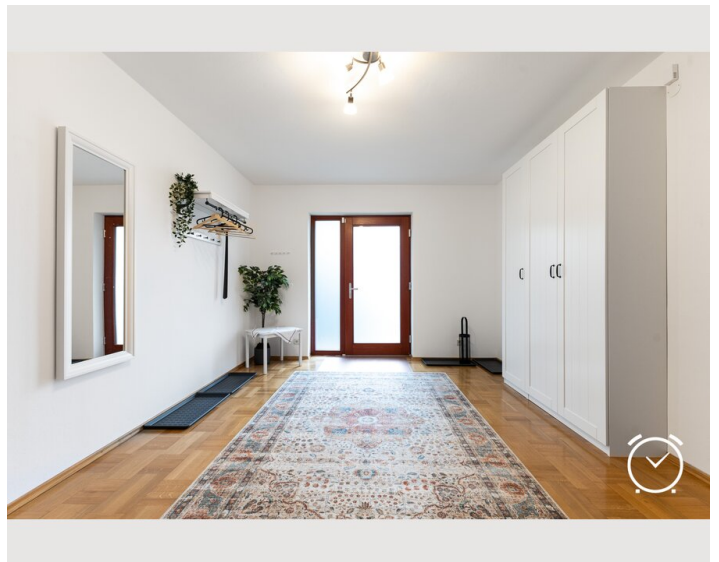
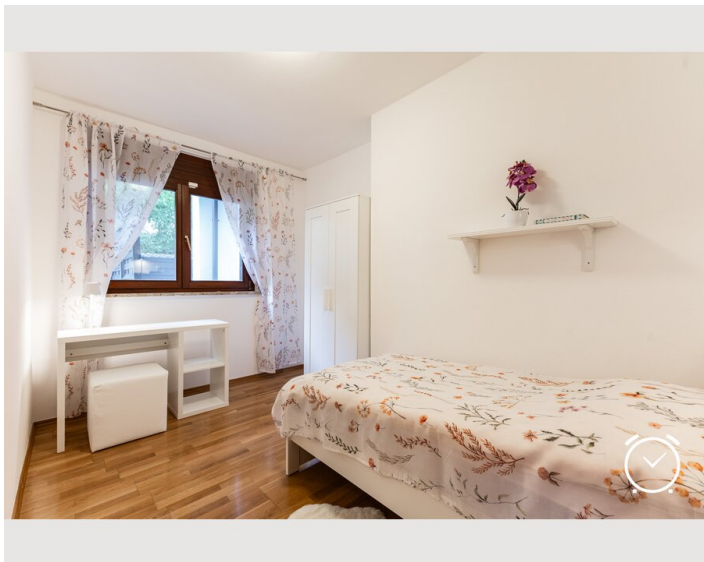
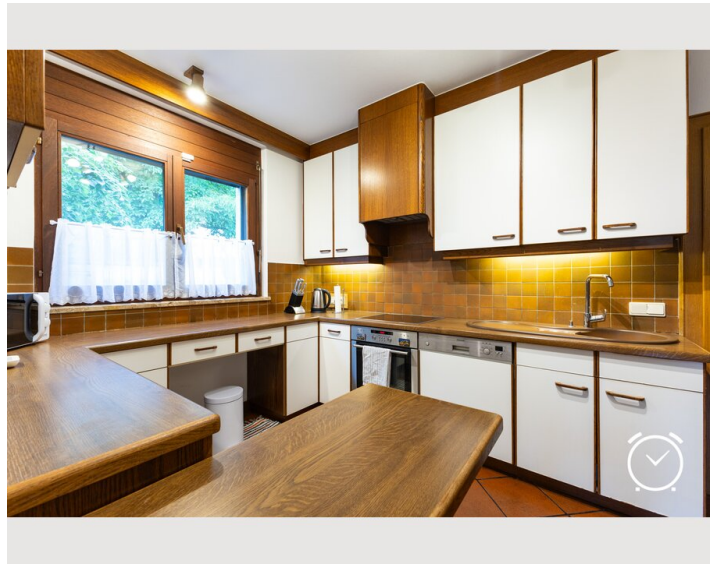
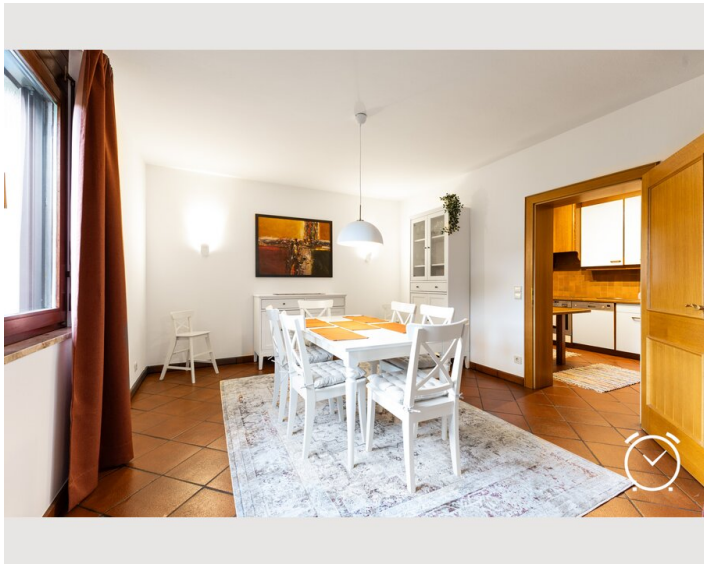
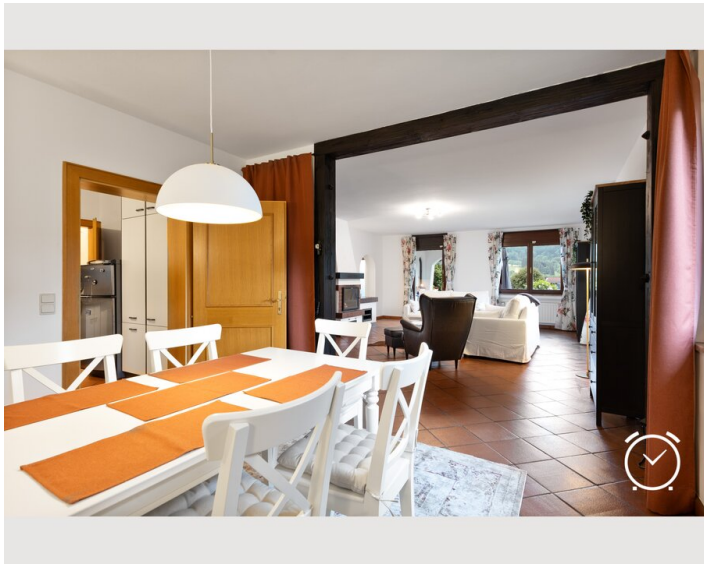
Informations

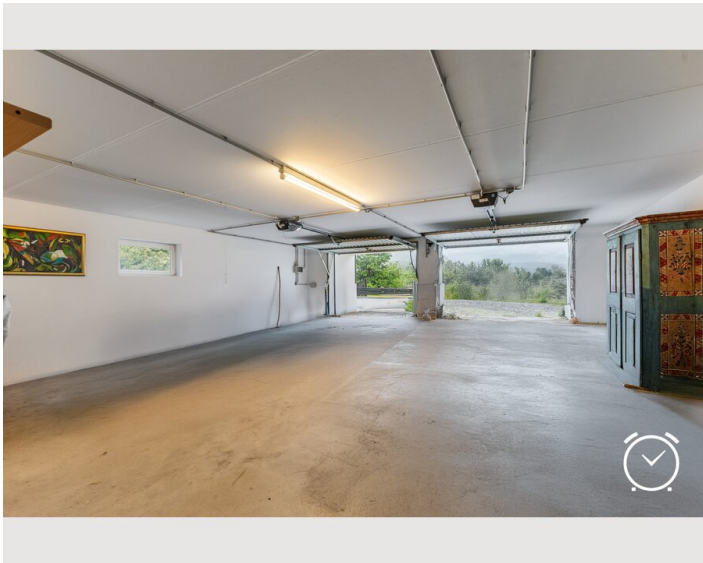
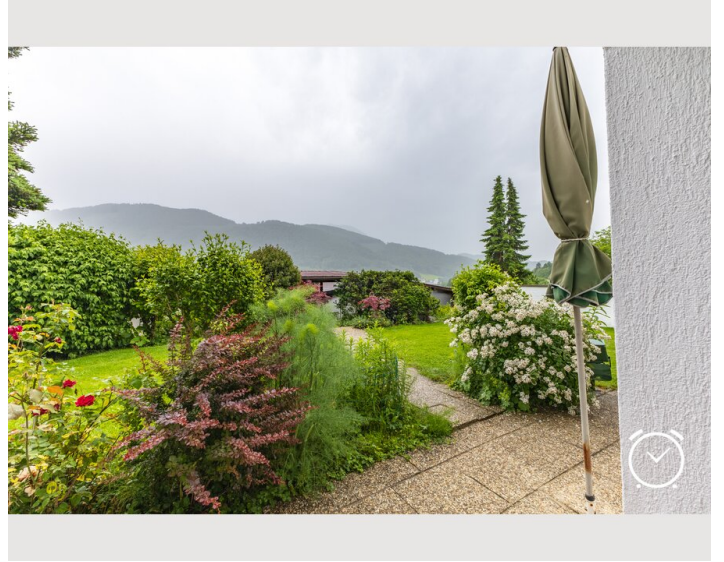
- Suitable for children
- Desk/Workplace
- Pets forbidden
- Bicycle room free of charge
- Smoking not allowed
- Private entrance
- Regular cleaning at extra cost

Picture gallery










Video


[Goto Video](#)




Infrastructure

 On Foot 15 min

 1,2 km

 2,7 km

 6,0 km

 7,5 km

The garden has direct access to the cycle path.

4 restaurants, butcher's shop, pharmacy, supermarket, tobacconist, bus stop, petrol station, general practitioner, dentist, internist within 5km. Doctor, dentist, internist within a radius of 1.5km.

Location

