



3 ROOM APARTMENT, 6911 LOCHAU

Prime Lochau Living: Garden, Lake & Train Minutes Away!

Object number: DRQP1

[View and rent online](#)

Period	09/07/ - 09/08/2025
Number of persons	2
Total incl. VAT.	€ 2.252,06
Security deposit	€ 1.700,00

3-room apartment with a large garden in a prime location, just 1 minute to Lake Constance and 5 minutes to Lochau train station. Perfect for commuters & lake lovers!



Living space

80m²



Maximum occupancy

3 Persons



Complete accommodation [?]

1 private bathroom 2 Separated bedrooms



Ground floor



Check-in

15:00 - 21:00 Clock



Check-out

07:00 - 11:00 Clock

Sleeping options

Bedroom 1



1x Double bed (1,80 m x 2 m)

Bedroom 2



1x Sofa bed (1 person)

Descripton of accommodation

A warm welcome to this wonderful 3-room apartment with a large garden in a prime location in Lochau – only 1 minute to Lake Constance and 5 minutes to Lochau train station. Perfect for commuters & lake lovers!

This charming and very well-equipped apartment offers everything you need for a comfortable and unforgettable stay. It features an ideal layout with a cozy living area and two separate bedrooms:

The large master bedroom is furnished with a spacious wardrobe, offering plenty of space for your clothing.

The smaller bedroom is versatile and equipped with a comfortable sofa bed, providing a cozy sleeping space for one person.

The inviting living area is the perfect place to relax after an eventful day. For your entertainment, there's a new Smart TV and complimentary high-speed internet. The entire apartment is designed to make your daily life as pleasant as possible and is fully equipped with everything you might need.

The fully equipped kitchen will delight any home chef and is perfect for preparing meals together. It includes: a fully automatic coffee machine, a kettle, dishwasher, ...

The bathroom is not only functional but also offers additional comfort with its own washing machine and a separate dryer, which is especially appreciated during longer stays or after sporting activities by the lake.

An absolute highlight of this apartment is the large private garden. With its spacious green area, it invites you to sunbathe, play, relax, and linger outdoors – a true oasis of tranquility. The immediate proximity to Lake Constance (Bodensee) (just a 1-minute walk!) allows for spontaneous strolls along the shore, a refreshing swim, or simply enjoying the beautiful lakeside atmosphere anytime.

Experience a carefree and relaxing stay in this excellently located and fully equipped holiday apartment!

Equipment & Features



Basic equipment

- Terrace
- Internet/Wifi
- Private washing machine
- Bedclothes
- Private toilet
- Vacuum cleaner
- Cleaning utensils
- Garden
- TV
- Private dryer
- Towels
- Garage
- Iron & ironing board
- Hairdryer



First supply

- Toilet paper
- Soap



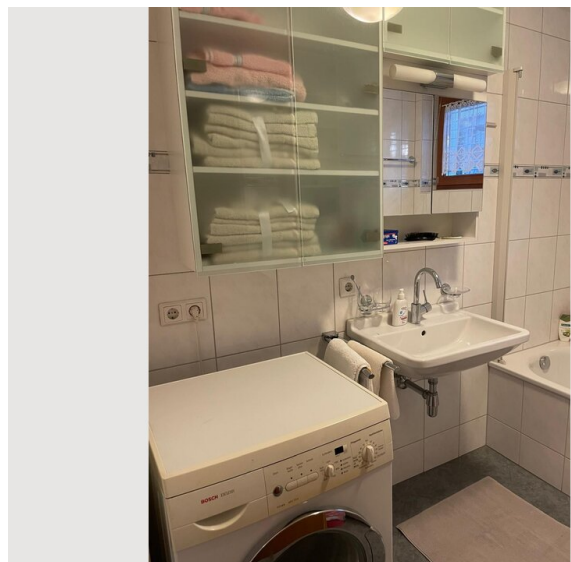
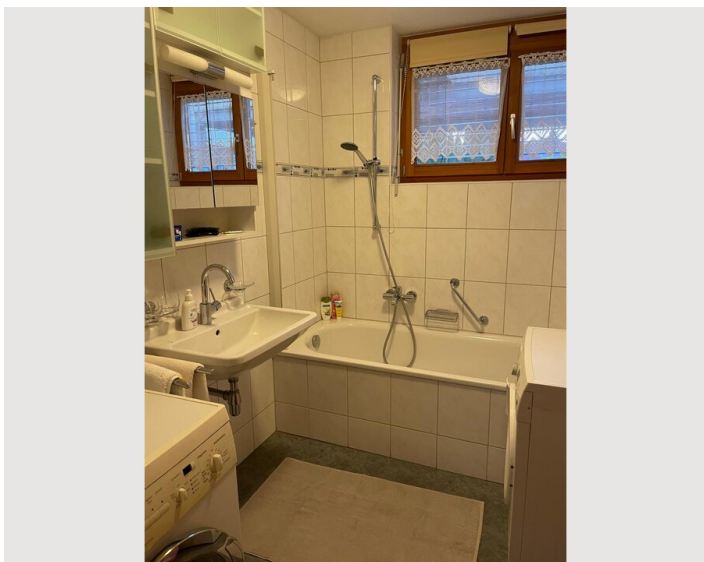
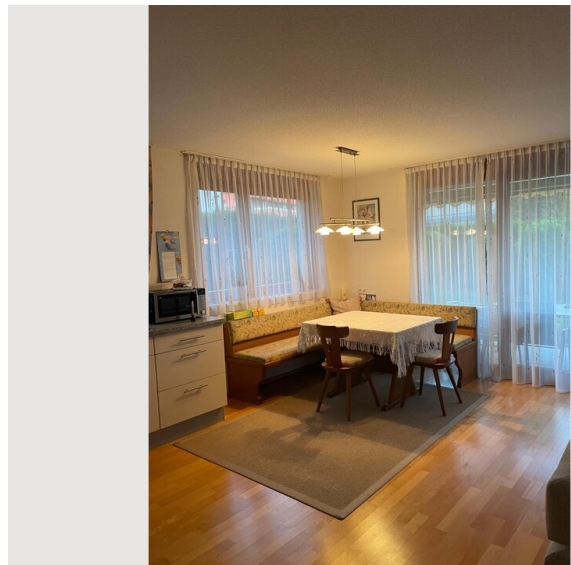
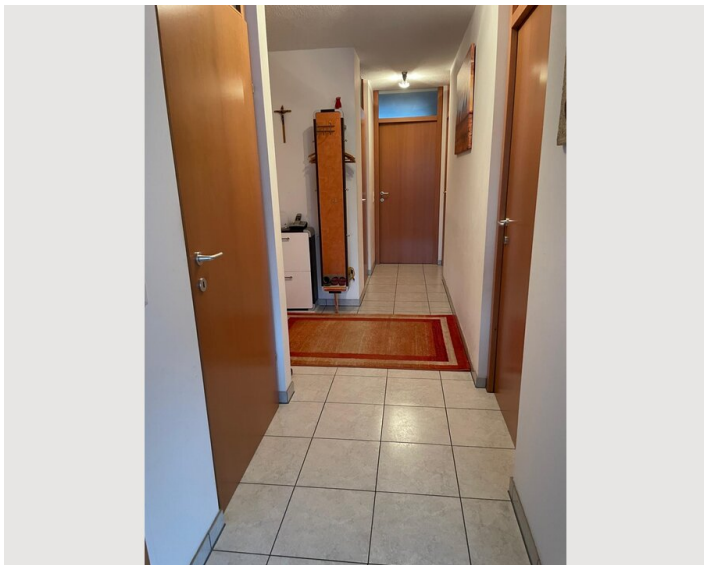
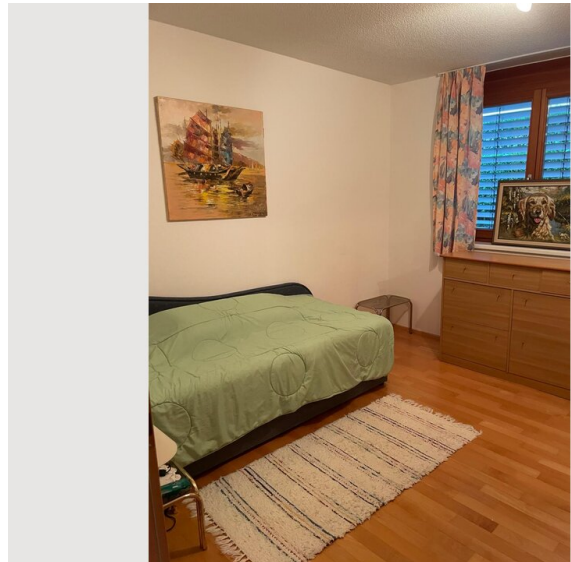
Kitchen

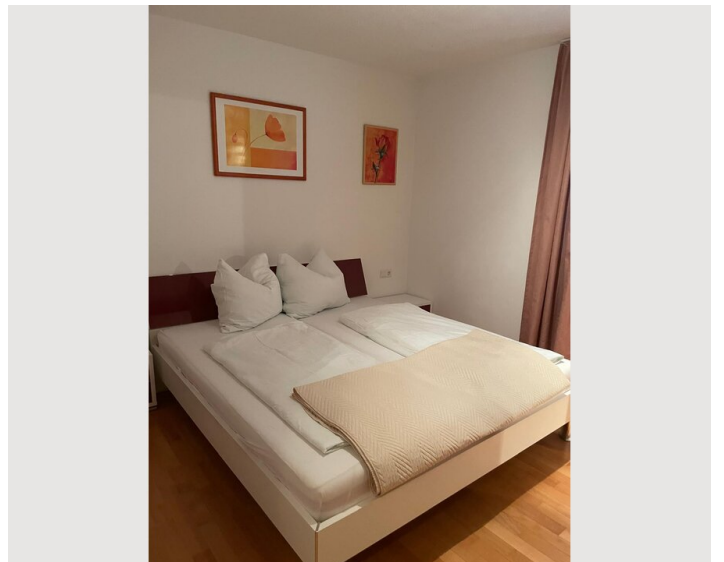
- Private kitchen
- Glasses/Tableware
- Dishwasher
- Cooking utensils
- Coffee machine
- Microwave

Informations

- Suitable for children
- Free short-term parking zone
- Pets forbidden
- Bicycle room free of charge
- Smoking not allowed
- Desk/Workplace
- Regular cleaning at extra cost

Picture gallery





Infrastructure



Reachable within 5 minutes by foot



Reachable within 10 minutes by foot



Reachable within 10 minutes by foot

Perfectly located in Lochau, you can enjoy excellent infrastructure right on your doorstep. Lake Constance (Bodensee) is just a one-minute walk away, inviting you for spontaneous outings.

For your daily shopping needs, a SPAR supermarket is conveniently nearby (Alberlochstraße 30, just a few minutes' walk). A pharmacy (Martin-Apotheke, Bahnhofstraße 25) is also reachable in only about 5 minutes on foot. Furthermore, other shops for daily necessities, as well as the Lochau-Hörbranz train station, which ideally connects you to the wider region, are also accessible within approximately a 5-minute walk. This location perfectly combines living close to nature by the lake with the advantages of quick and straightforward access to local amenities.

Parking garage available.

