



STUDIO APARTMENT, 1230 VIENNA

Studio apartment in Vienna Liesing

Object number: WEGR2

[View and rent online](#)

Period	12/07/ - 12/08/2025
Number of persons	2
Total incl. VAT.	€ 1.316,82
Security deposit	€ 900,00

Studio apartment in Vienna Liesing – Ideal for couples, students, or business travelers Welcome to our bright and comfortable apartment for 1–2 guests, available from September 2025.



Living space

37m²



Maximum occupancy

2 Persons



Complete accommodation [?]

1 private bathroom 1 Living-Sleepingroom



2. floor

Elevator available



Check-in

11:00 - 15:00 Clock



Check-out

07:00 - 10:00 Clock

Sleeping options

Living and sleeping



1x Sofa bed (2 persons)

Description of accommodation

Whether you're looking for a temporary home or a quiet workspace, this studio apartment offers high-quality furnishings and a stylish atmosphere.

Original artworks from our studio give the space a unique charm. Art lovers can request a visit to our nearby studio.

The apartment is quiet and comfortable. A brand-new washer-dryer unit will be available from September (installation planned for summer).

You will have the entire apartment to yourself, and flexible check-in is possible via a key safe. The apartment is on the second floor, accessible by elevator.

Location:

Located in Vienna's 23rd district (Liesing), with excellent access to the S-Bahn and the Südbahn railway. The S-Bahn station is a 6-minute walk away, with 7 minutes to Wien Meidling and 15 minutes to Wien Mitte Landstraße. The highway is also quickly accessible.

Free amenities:

- ✓ Wi-Fi
- ✓ Fully equipped kitchen
- ✓ Laptop-friendly workspace

At check-in, the front gate is opened via phone call. During your stay, you'll use the key from the safe to access and secure the gate.

We're happy to assist you via message at any time during your stay.

We're looking forward to welcoming you!

Equipment & Features



Basic equipment

- Internet/Wifi
- Printer
- Private dryer
- Towels
- Vacuum cleaner
- Cleaning utensils
- TV
- Private washing machine
- Bedclothes
- Private toilet
- Iron & ironing board
- Hairdryer



First supply

- Toilet paper
- Soap
- shampoo
- Nespresso capsules



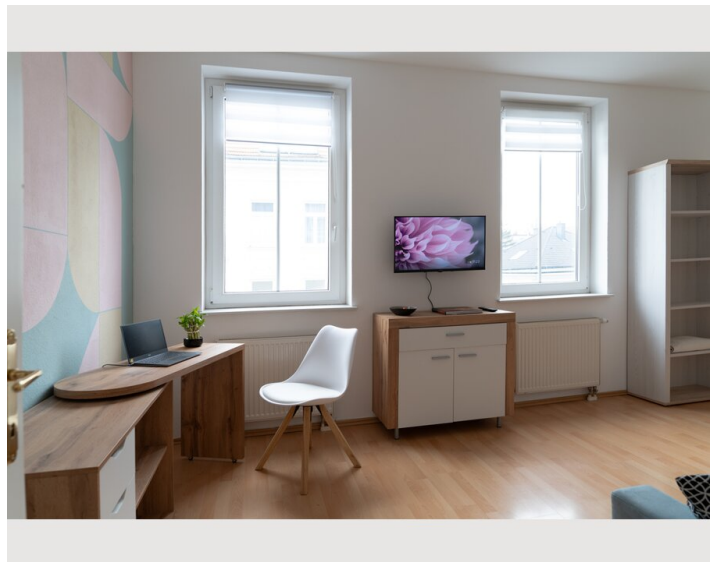
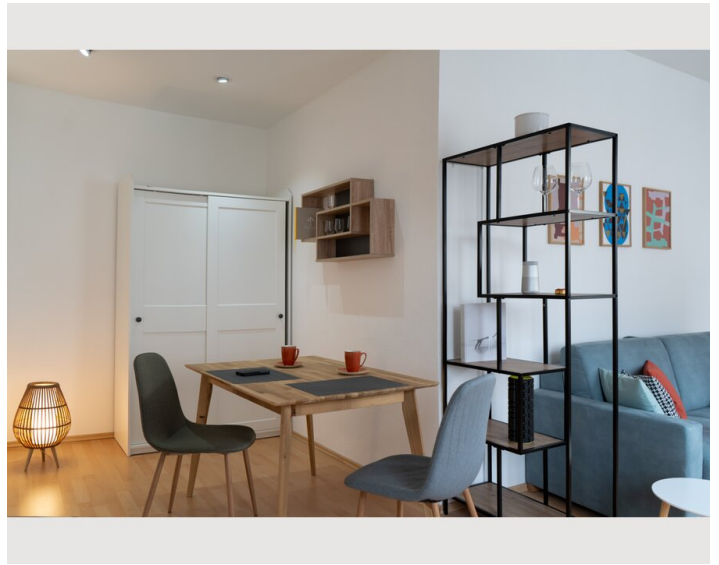
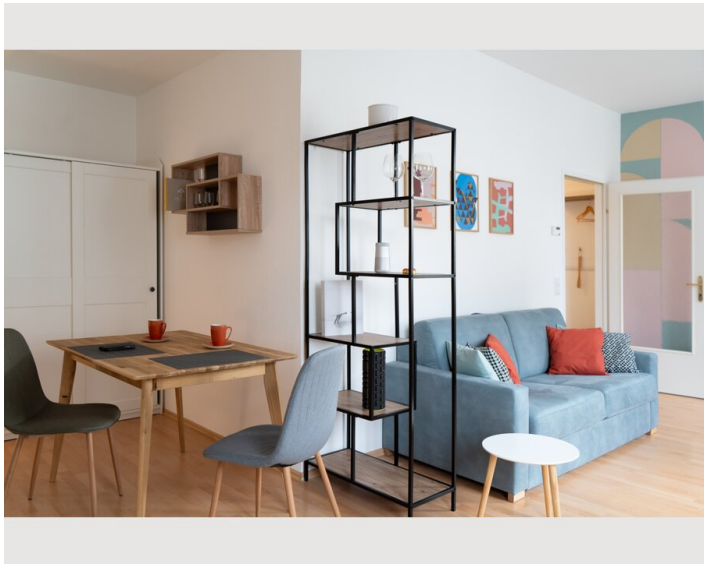
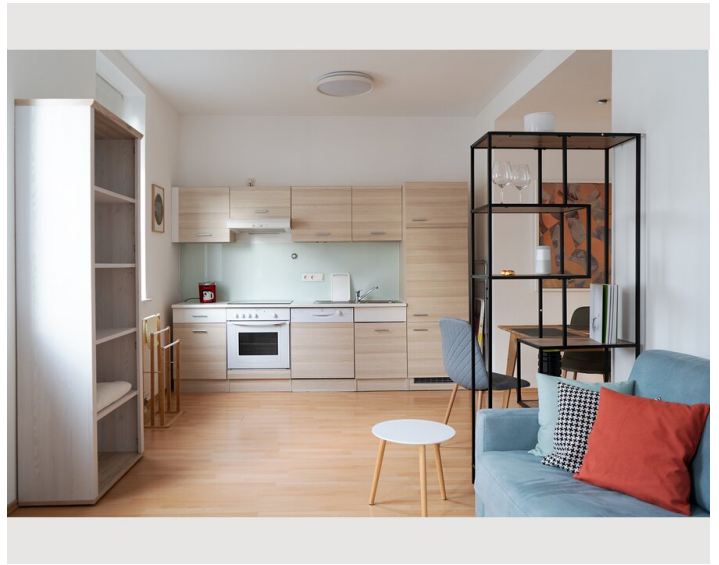
Kitchen

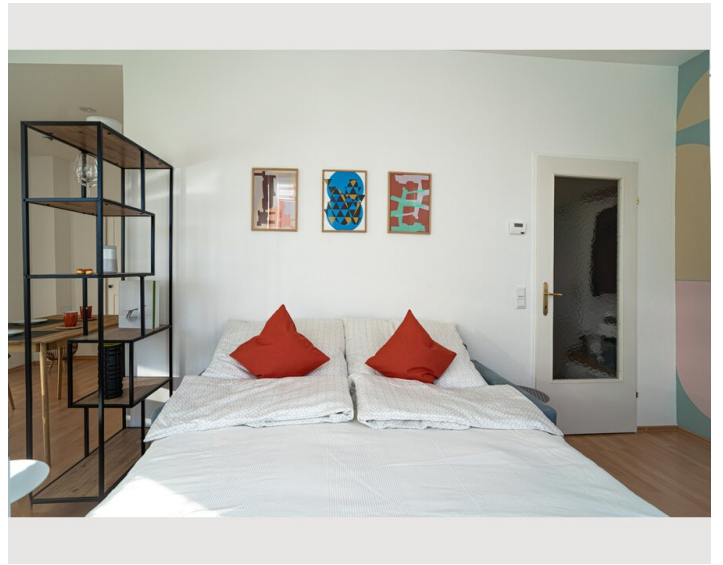
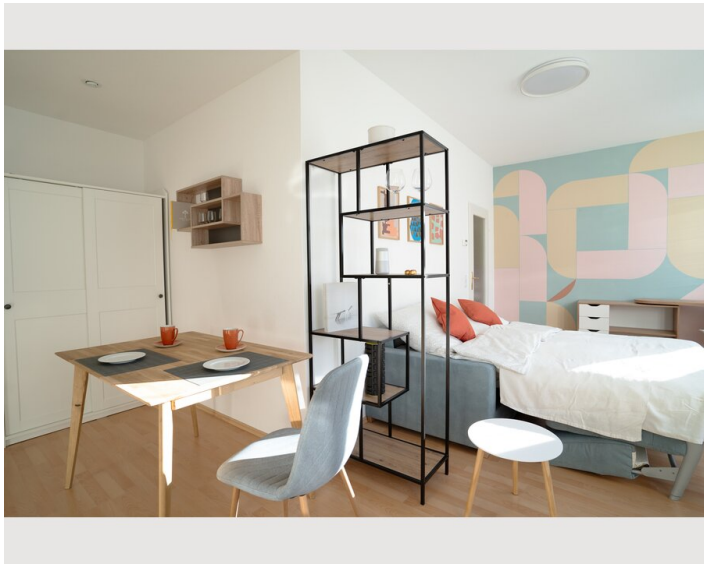
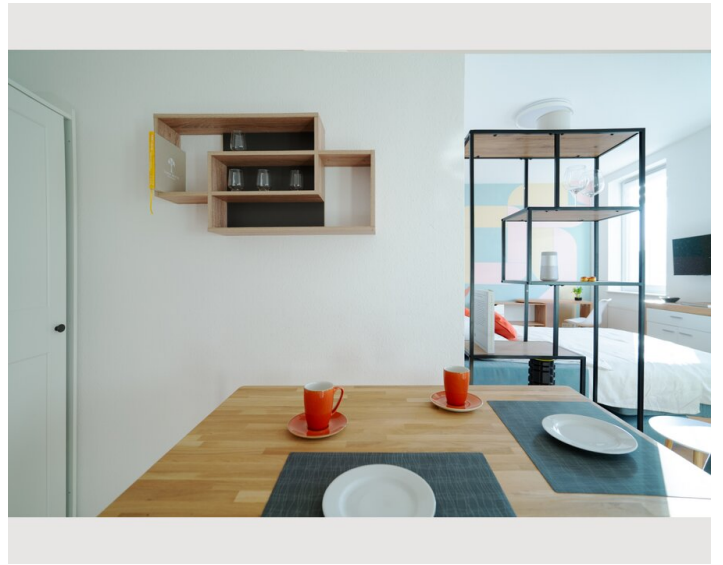
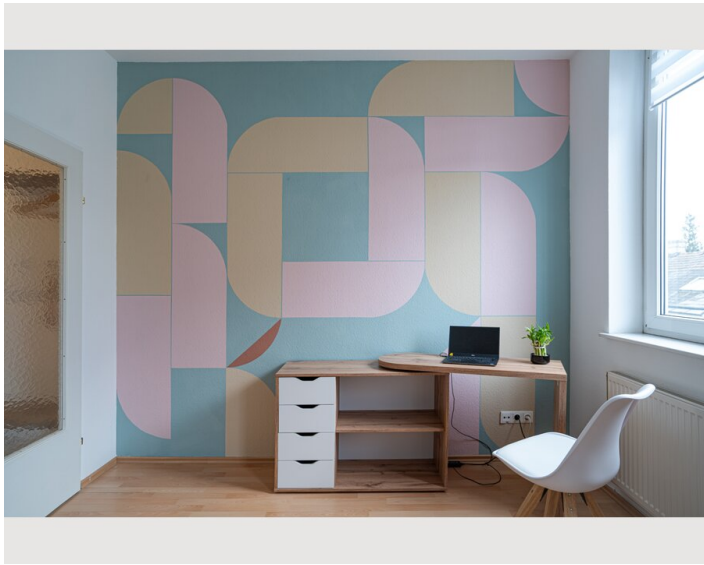
- Private kitchen
- Glasses/Tableware
- Microwave
- Cooking utensils
- Coffee machine

Informations

- Smoking not allowed
- Desk/Workplace
- Pets forbidden
- Bicycle room free of charge
- Short-term parking zone subject to a charge
- Private entrance
- Regular cleaning at extra cost

Picture gallery





Infrastructure



zu Fuss



zu Fuss



zu Fuss



per Schnellbahn vom Bahnhof Liesing

Just 5 minutes on foot: shopping center with various stores, restaurants, and a pharmacy. The nearby Liesingbach stream is perfect for relaxing walks.

Parking:

- Park & Ride facility about 5 minutes away:
- Daily rate: ~€4.40
- Weekly rate: ~€22

Location

