

2 ROOM APARTMENT, 1100 VIENNA

## C. Kindermann




Object number: STYR56

[View and rent online](#)

<b>Period</b>	01/05/ - 31/05/2026
<b>Number of persons</b>	2
<b>Total incl. VAT.</b>	€ 2.424,83
Security deposit	€ 1.800,00

The house is located opposite the park and St. Anton's Church. From your window, you can enjoy a view of the greenery.

-  **Living space**  
48m<sup>2</sup>
-  **Maximum occupancy**  
4 Persons
-  **Complete accommodation**   
1 Private bathroom 1 Separated bedroom

-  **1. floor**
-  **Check-in**  
08:00 - 22:00 Clock
-  **Check-out**  
08:00 - 22:00 Clock

## Sleeping options

### Sleeping room



1x Double bed (1,80 m x 2 m)



1x Sofa bed (2 persons)

## Descripton of accommodation

The apartment Clemens Kindermann is located in the 10th district of Vienna, Antonsplatz (1st floor, no elevator) and easily reachable by public transportation. The city center is only 10 minutes away.

The modern and fully furnished apartment with a size of 48m<sup>2</sup>, has a living room, a bedroom, a fully equipped kitchen, an anteroom and a bathroom (bathtub, WC and washing machine).

The apartment is designed with artworks of Clemens Kindermann.

All rates include the stay of max. two persons, the minimum stay is 1 week.

The weekly price applies for a stay of minimum 2 weeks.

From 3 months and 1 day there is no local tax.

## Equipment & Features

### Basic equipment

- Internet/Wifi
- Bedclothes
- Private toilet
- Iron & ironing board
- Hairdryer
- Private washing machine
- Towels
- Vacuum cleaner
- Cleaning utensils

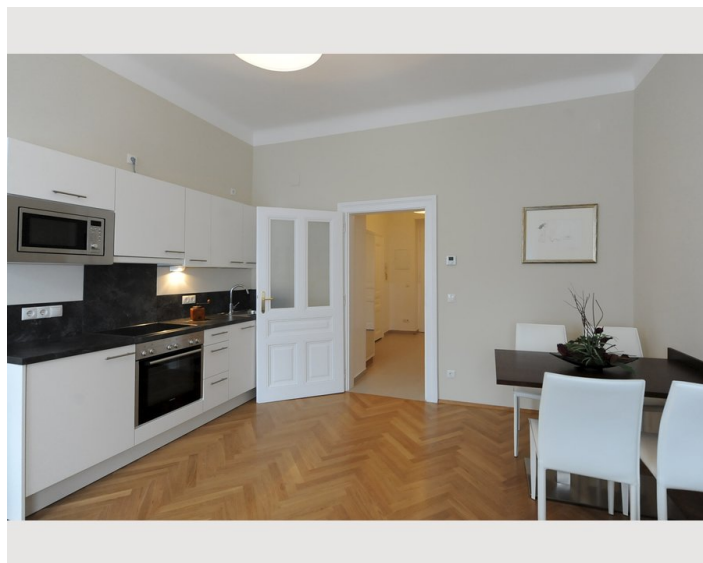
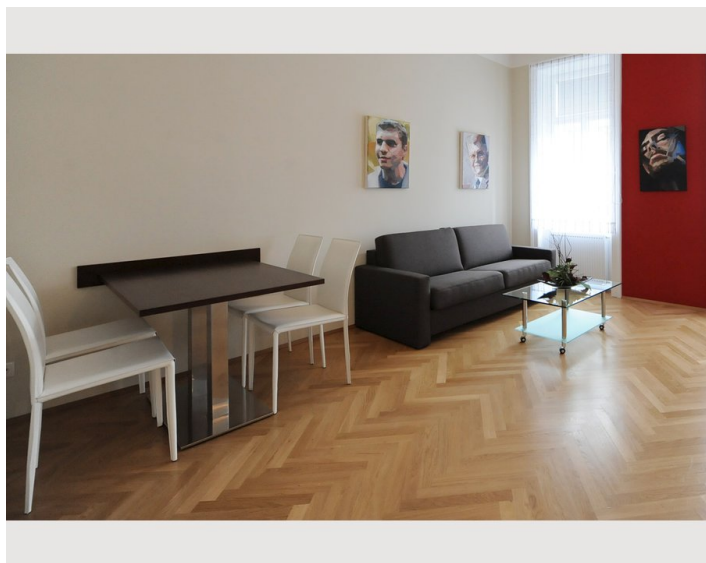
### Kitchen

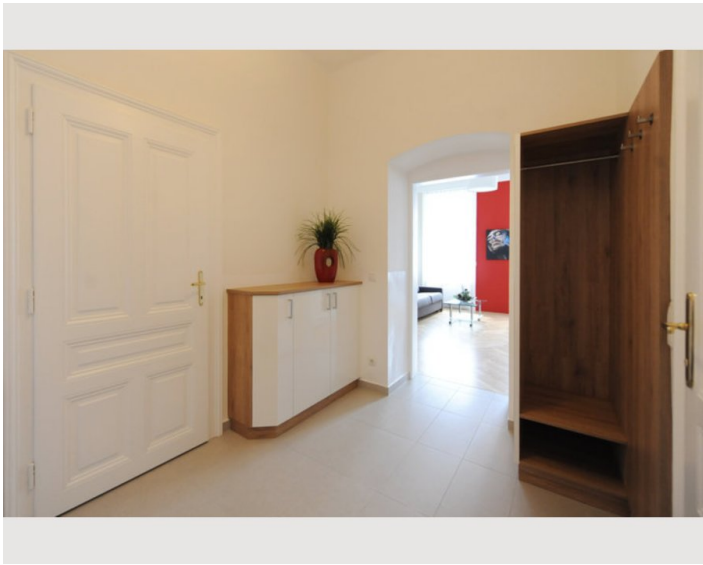
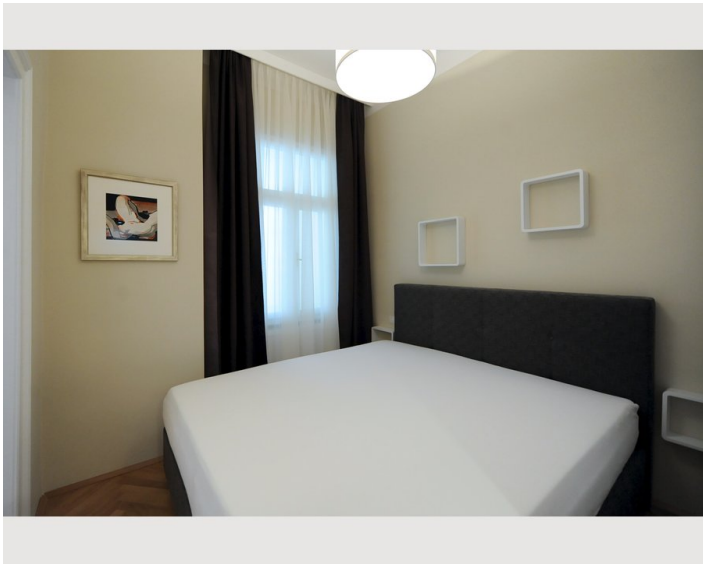
- Private kitchen
- Glasses/Tableware
- Dishwasher
- Cooking utensils
- Coffee machine
- Microwave

## Informations

- Smoking not allowed
- Pets forbidden
- Bicycle room free of charge
- Short-term parking zone subject to a charge
- Regular cleaning at extra cost

## Picture gallery





### Infrastructure



---

Supermarkets, restaurants, a pharmacy and the Tichy ice cream parlour are located in the immediate vicinity. New cycle paths take you to the city centre or the Oberlaa spa gardens. Paid car park (Flora Garage), Hetzgasse 4-6

## Location

