

STUDIO APARTMENT, 4020 LINZ

## Apartment with roof terrace and parking space

Object number: PRAE2

[View and rent online](#)

<b>Period</b>	20/12/2025 - 20/01/2026
<b>Number of persons</b>	2
<b>Total</b> incl. VAT.	€ 1.863,18
Security deposit	€ 1.300,00

Are you looking for a fully furnished and high-quality apartment? This apartment offers a great option for business travelers as well as those looking for a temporary job in Linz.



### Living space

31m<sup>2</sup>



### Maximum occupancy

2 Persons



### Complete accommodation <sup>?</sup>

1 Private bathroom 1 Living-Sleepingroom



### 5. floor

Elevator available



### Check-in

15:00 - 19:00 Clock



### Check-out

08:00 - 11:00 Clock

## Sleeping options

### Living and sleeping



1x Double bed (1,60 m x 2 m)

## Descripton of accommodation

Enjoy the roof terrace in a central location and private parking for your car. Public transport such as buses and trams are just a few minutes' walk away.

I offer a temporary apartment for your longer stay (minimum stay of 30 days). The accommodation is located on the 5th floor of a residential complex and has a private roof terrace, which you can access via the living room. You have a wonderful view over the rooftops of Linz and a glimpse of the skyline at Linz train station.

The apartment consists of an entrance hall, a bathroom with toilet, and a living-bedroom. You enter the apartment via the building entrance on the ground floor and take the elevator to the 4th floor. The last floor must be reached on foot. Due to the proximity to the railway line, you may hear trains.

The apartment is available for private use. I will not be personally present, but I am available at any time for questions.

## Equipment & Features



### Basic equipment

- Roof-terrace
- TV
- Bedclothes
- Private toilet
- Aircondition
- Internet/Wifi
- Private washing machine
- Towels
- Private parking space
- Vacuum cleaner



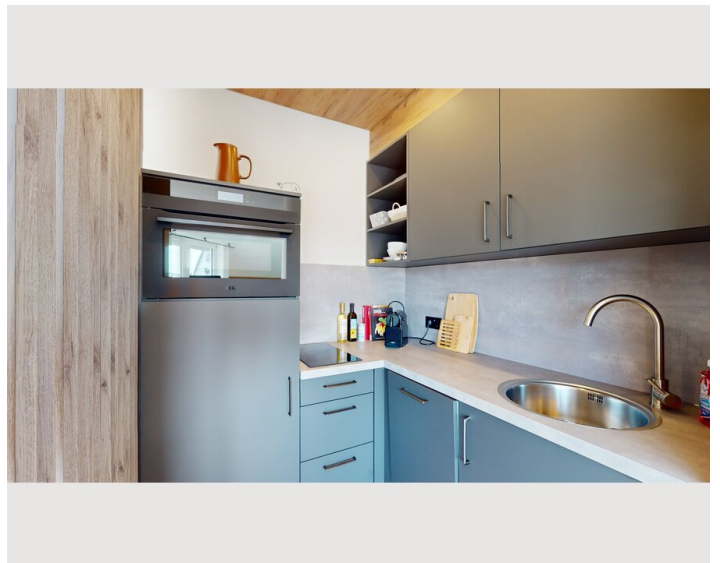
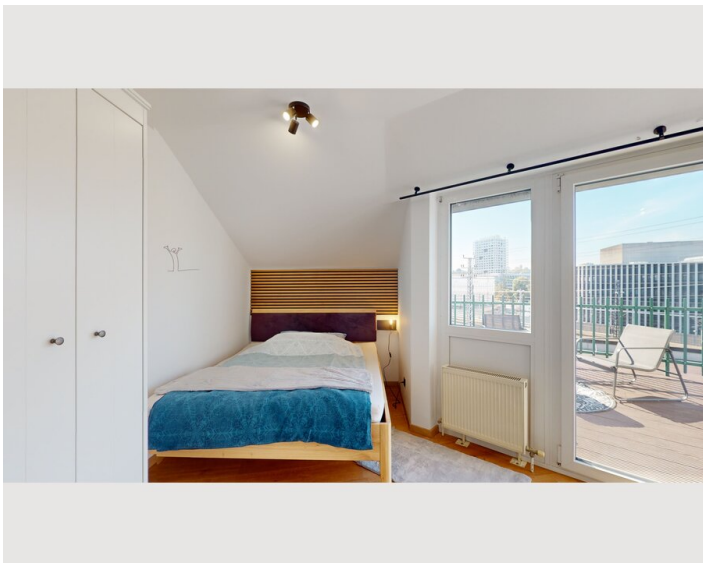
### Kitchen

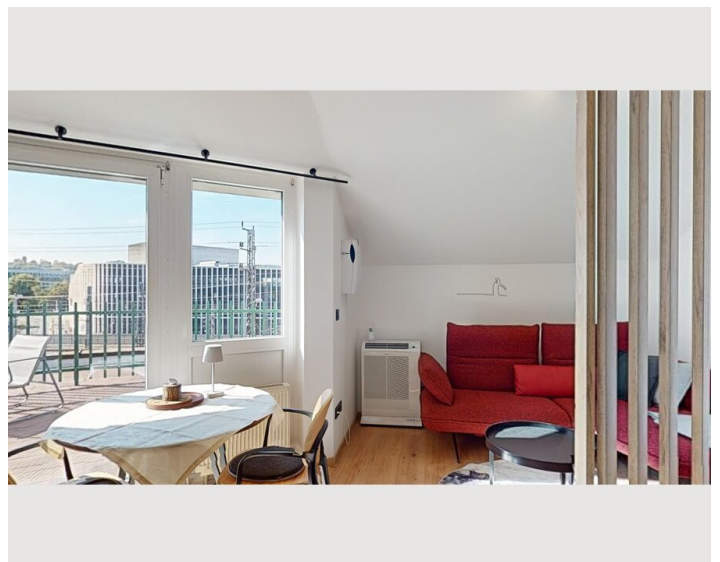
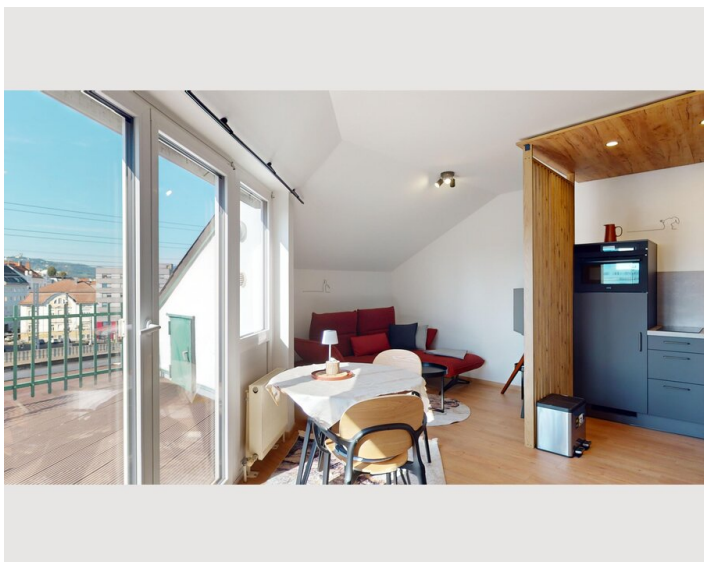
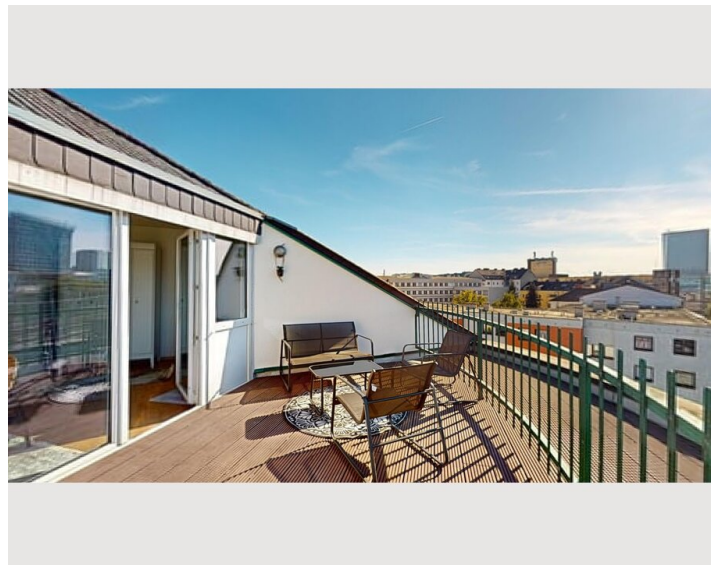
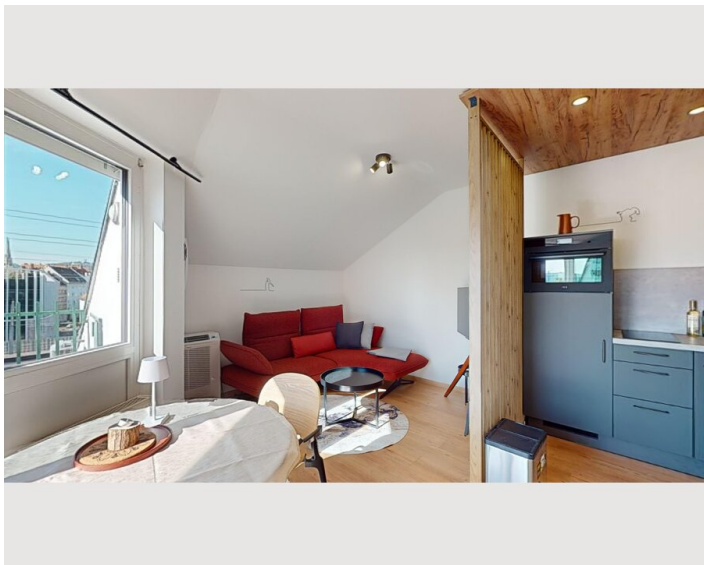
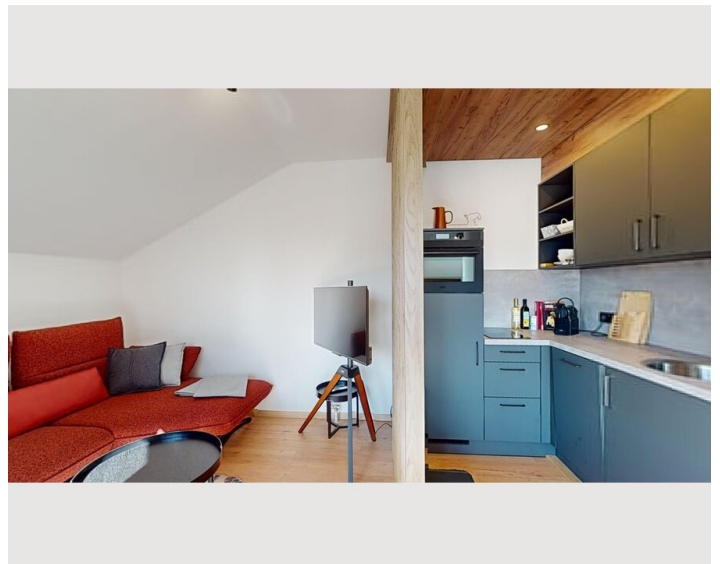
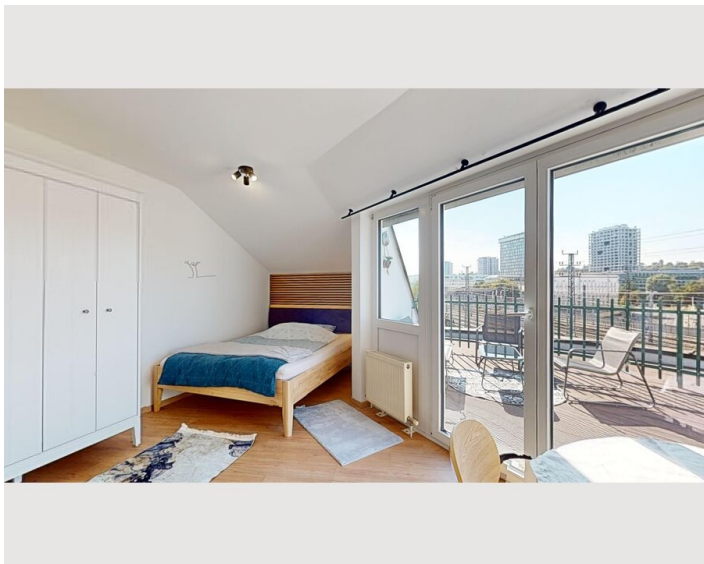
- Private kitchen
- Espresso machine
- Microwave
- Glasses/Tableware
- Dishwasher

## Informations

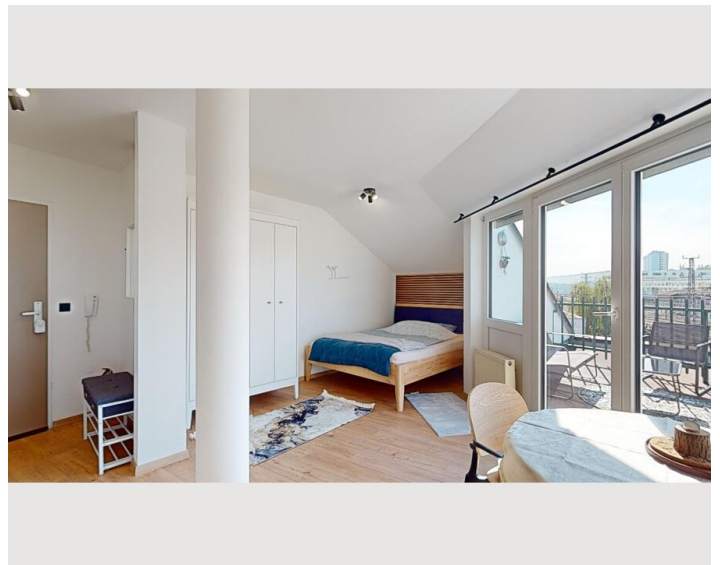
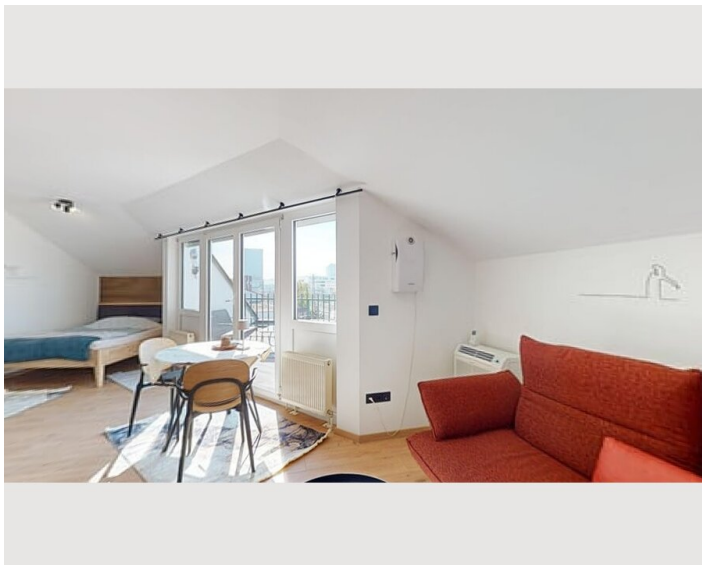
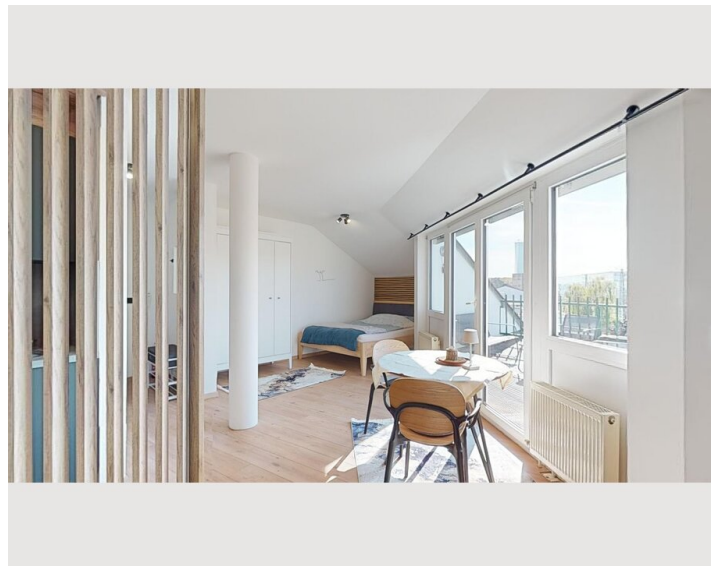
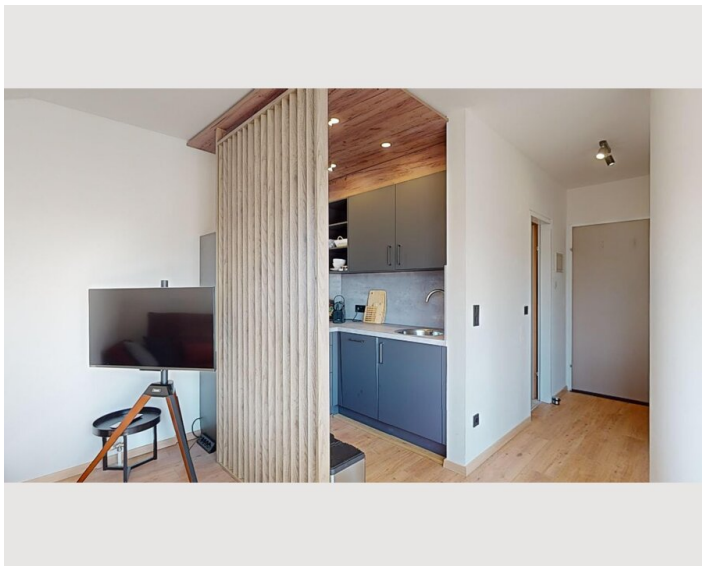
- Suitable for construction workers
- Smoking not allowed
- Pets on request
- Not suitable for children
- Private entrance
- Regular cleaning at extra cost

## Picture gallery









### Infrastructure



Linz main station



Grocery store 300 meters away



bus stop 120 meters to the next stop

The apartment is just a few minutes' walk from the main road and the train station. Public transportation, such as buses and trams, is within walking distance. A supermarket, a drugstore, and several restaurants are just a few minutes' walk away. Parking is available in the private parking lot in front of the building.

Location

