



2 ROOM APARTMENT, 1100 VIENNA

## Alfred's Apartment

Object number: ACYL1

[View and rent online](#)

<b>Period</b>	16/06/ - 16/07/2026
<b>Number of persons</b>	2
<b>Total incl. VAT.</b>	€ 2.095,45
Security deposit	€ 1.600,00

Entire accommodation, fully equipped, garage space in the house, new air conditioning, public transport connections via tram line D, 20 minutes to the city center, main train station nearby, about 30 minutes to the airport, good shopping facilities.



### Living space

46m<sup>2</sup>



### Maximum occupancy

2 Persons



### Complete accommodation <sup>?</sup>

1 Private bathroom 1 Separated bedroom



### 4. floor

Elevator available



### Check-in

11:00 - 22:00 Clock



### Check-out

09:00 - 10:00 Clock

## Sleeping options

### Sleeping room



1x Double bed (1,80 m x 2 m)



1x Sofa bed (1 person)

## Description of accommodation

The apartment is very quiet, east-facing, and air-conditioned. A large supermarket is a 5-minute walk away.

### Equipment & Features

#### Basic equipment

- Balcony
- TV
- Bedclothes
- Private toilet
- Aircondition
- Iron & ironing board
- Hairdryer
- Internet/Wifi
- Private washing machine
- Towels
- Garage
- Vacuum cleaner
- Cleaning utensils

#### First supply

- Toilet paper
- Soap
- shampoo

#### Kitchen

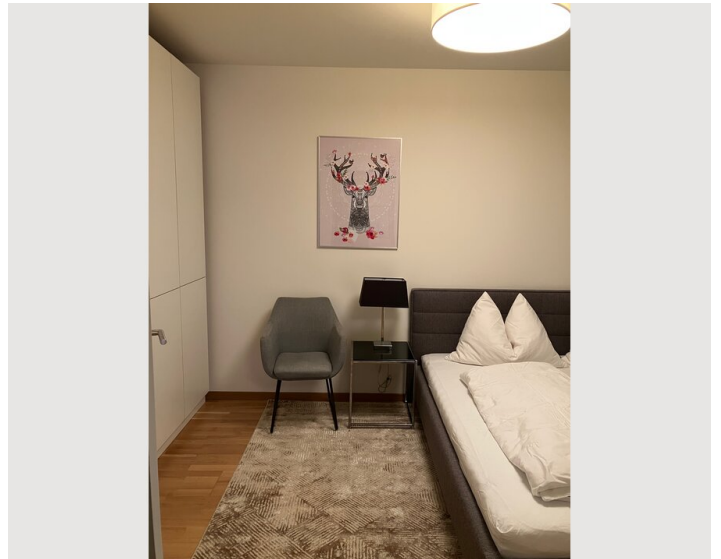
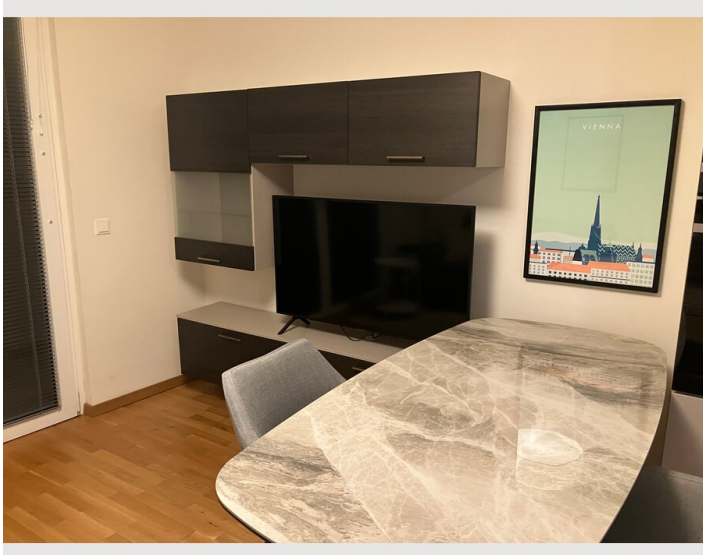
- Private kitchen
- Glasses/Tableware
- Dishwasher
- Cooking utensils
- Coffee machine
- Microwave

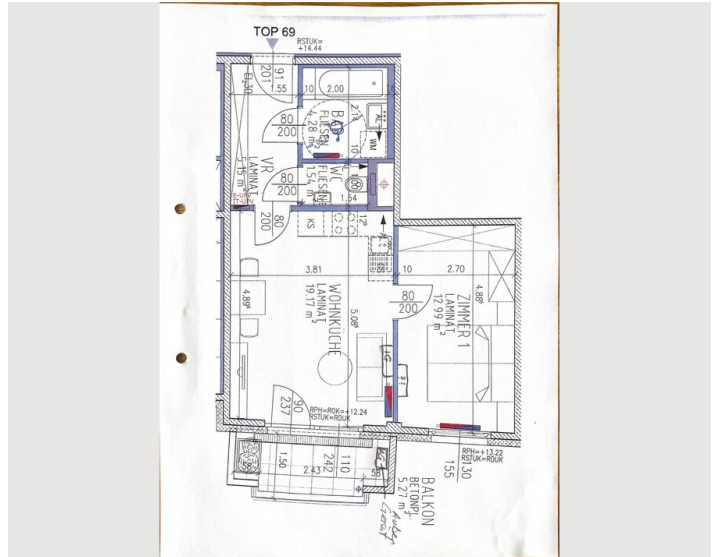
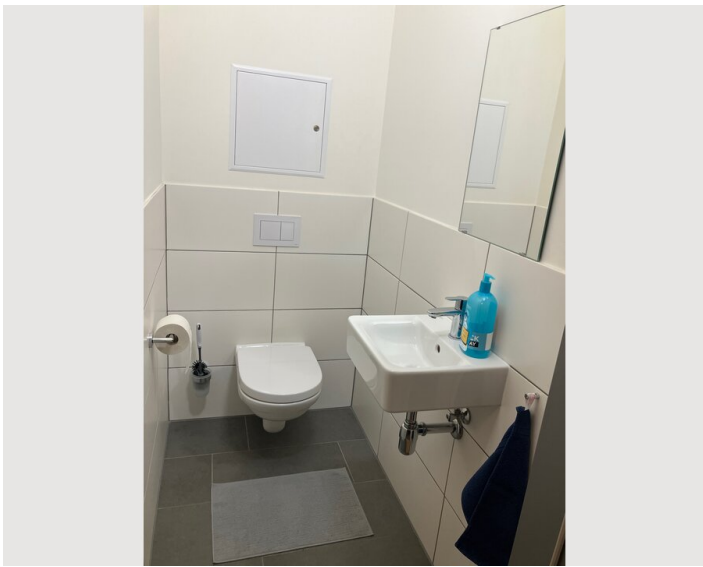
## Informations

- Not suitable for children
- Short-term parking zone subject to a charge
- Pets forbidden
- Bicycle room free of charge
- Smoking not allowed
- Private entrance
- Regular cleaning at extra cost

## Picture gallery









## Infrastructure

 Tram Line D is 5min. walk

 Large supermarket 5 min walk

 Mainstation is about 15min. walk, or Line D, 3 Stations

Spar supermarket is nearby, there's a pharmacy in the building, tram line D (terminal stop at Absberggasse) is a 5-minute walk away, a bike path leads directly into the city center, and the main train station with connections to the airport is a 15-minute walk away, or 3 stops away by tram.

## Location

