



3 ROOM APARTMENT, 6900 BREGENZ

## Family-friendly Maisonette Apartment with Garden

Object number: YCCP1

[View and rent online](#)

Relax in this spacious, stylishly renovated 98m<sup>2</sup> apartment with a private garden, trampoline, and direct access to a playground in the complex. Ideal for families, commuters, and workation guests.

<b>Period</b>	07/03/ - 07/04/2026
<b>Number of persons</b>	2
<b>Total incl. VAT.</b>	€ 3.589,36
<b>Security deposit</b>	€ 2.700,00



### Living space

98m<sup>2</sup>



### Maximum occupancy

4 Persons



### Complete accommodation <sup>?</sup>

2 Shared bathrooms 3 Shared bedrooms



### 1. floor



### Check-in

15:00 - 22:00 Clock



### Check-out

06:00 - 12:00 Clock

## Sleeping options

### Living & Sleeping 1



1x Double bed (1,80 m x 2 m)

### Living & Sleeping 2



1x Sofa bed (1 person)

### Living & Sleeping 3



1x Sofa bed (1 person)

### Descripton of accommodation

The apartment is quiet, sunny, and conveniently located—just 2 minutes from the motorway and 10 minutes from Lake Constance and the center of Bregenz.

Upon request, the baby crib can be replaced with a single bed to create more sleeping space.

## Equipment & Features



### Basic equipment

- Terrace
- Garden sharing
- TV
- Private dryer
- Towels
- Garage
- Vacuum cleaner
- Hairdryer
- Garden
- Internet/Wifi
- Private washing machine
- Bedclothes
- Private toilet
- Parking on the road without time limit without any cost
- Cleaning utensils



### First supply

- Toilet paper



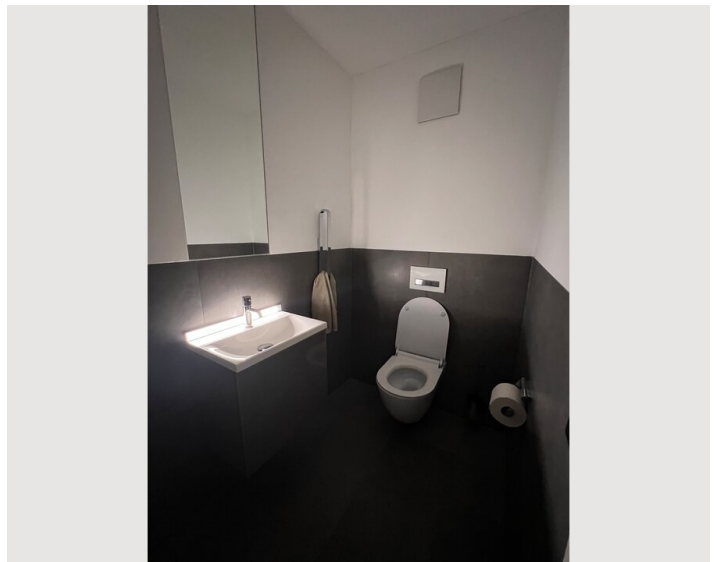
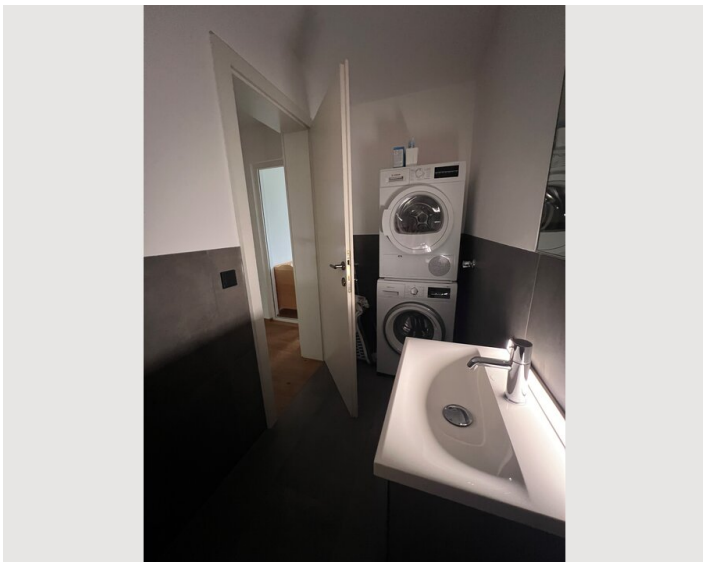
### Kitchen

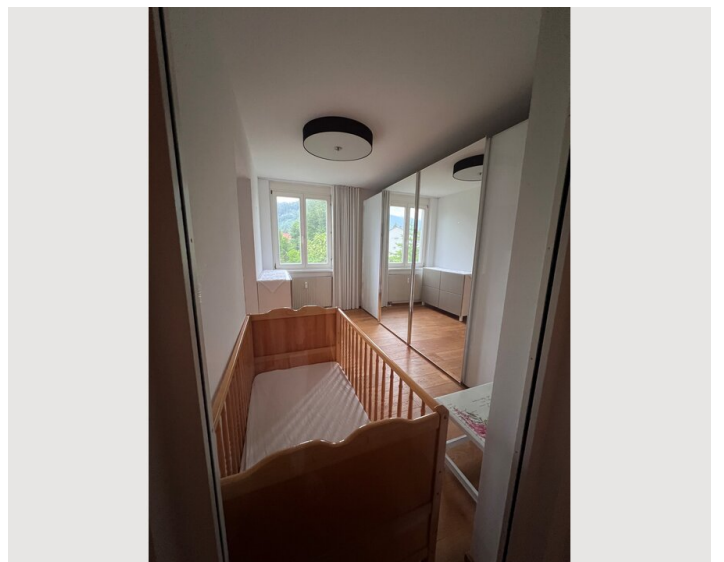
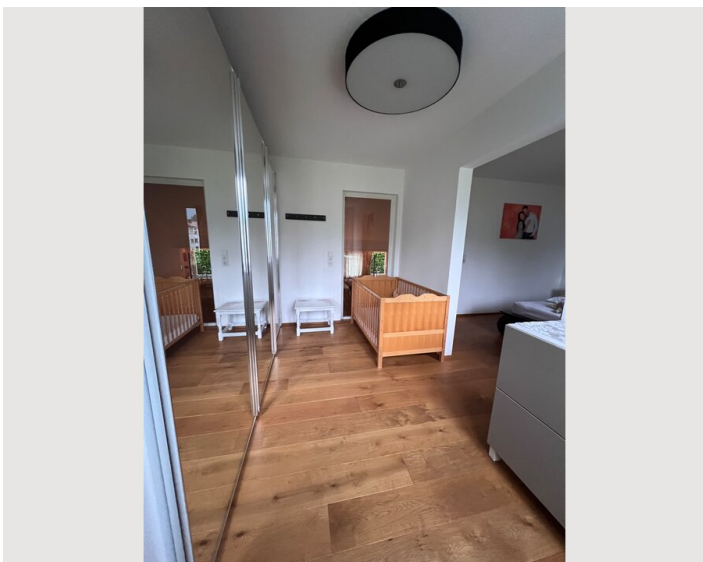
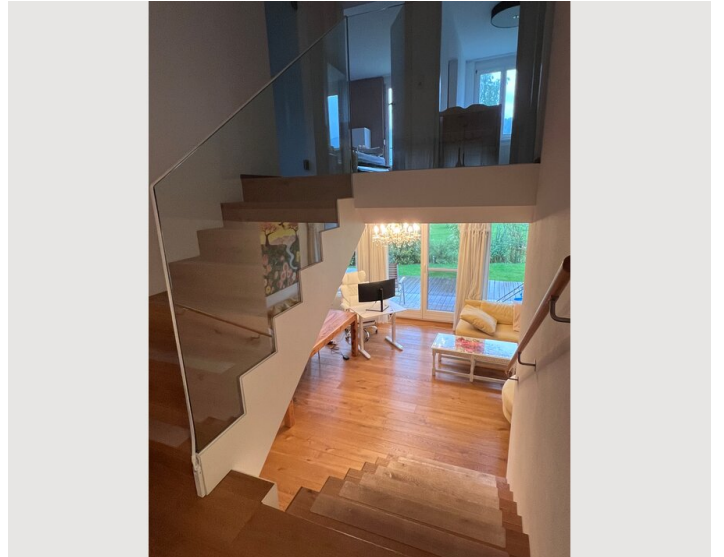
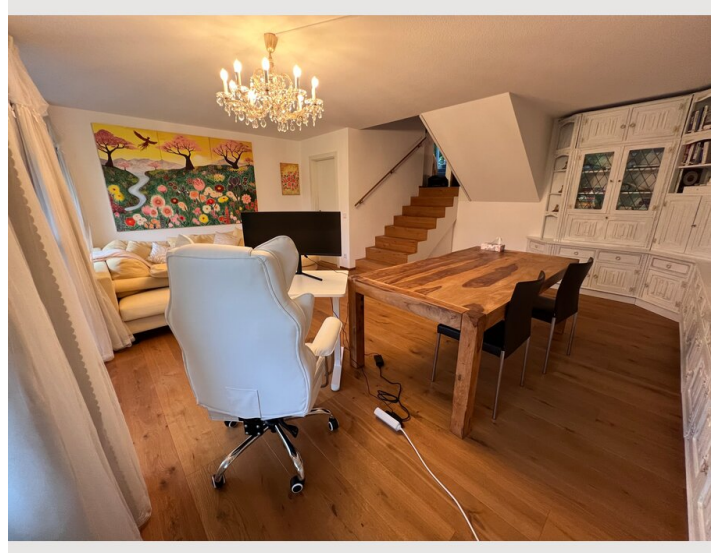
- Private kitchen
- Dishwasher
- Glasses/Tableware
- Steam cooker

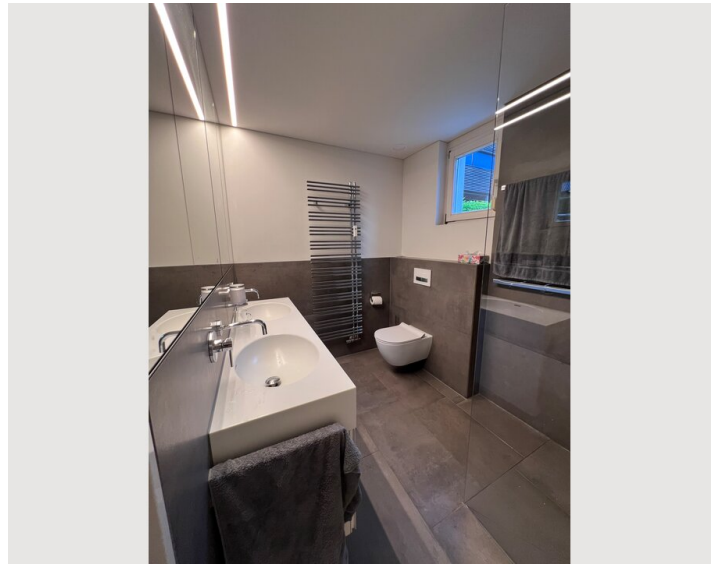
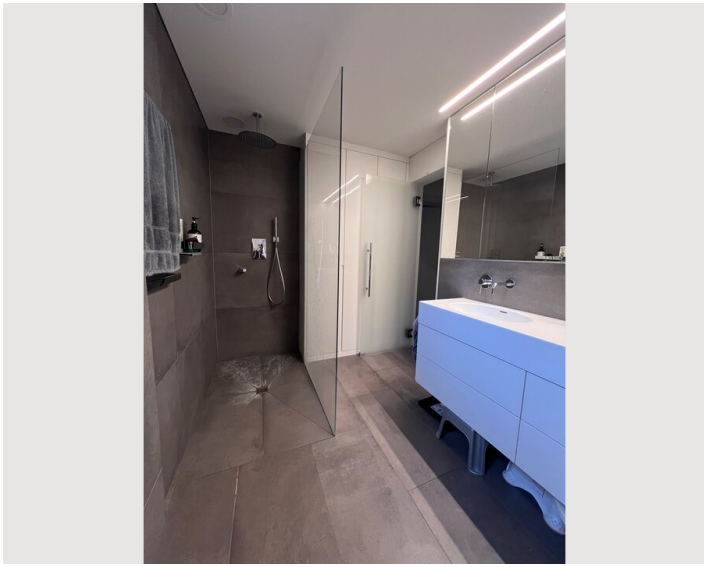
## Informations

- Suitable for construction workers
- Smoking not allowed
- Desk/Workplace
- Pets on request
- Regular cleaning at extra cost
- Suitable for children
- Free short-term parking zone
- Private entrance
- Pets forbidden
- Bicycle room free of charge

## Picture gallery







## Location

