



3 ROOM APARTMENT, 1100 VIENNA

## Three-room apartment in the Park Apartments with a view of the Belvedere and Swiss Garden

Object number: SKOK1

[View and rent online](#)

The flat was completely refurnished in 2025. A fixed parking space is available in the underground car park. From the seventh floor there is a beautiful view of the Swiss Garden and the Belvedere. The flat is 5 minutes from the main railway station.

|                          |                            |
|--------------------------|----------------------------|
| <b>Period</b>            | 21/12/2025 -<br>21/01/2026 |
| <b>Number of persons</b> | 2                          |
| <b>Total incl. VAT.</b>  | € 2.743,82                 |
| <b>Security deposit</b>  | € 2.100,00                 |



### Living space

90m<sup>2</sup>



### Maximum occupancy

2 Persons



### Complete accommodation <sup>?</sup>

1 Private bathroom 1 Separated bedroom



### 7. floor

Elevator available



### Check-in

08:00 - 22:00 Clock



### Check-out

08:00 - 22:00 Clock

## Sleeping options

### Sleeping room



1x Double bed (1,80 m x 2 m)

## Descripton of accommodation

The flat is friendly and modernly furnished with a spacious living area with kitchen and a beautiful view of the park. The flat also has a bedroom and an office. In addition to the bathroom with shower and toilet, there is another room with an additional toilet. There is also a storage room with a washing machine, a Hoover and cleaning utensils. The flat is part of the Parkapartments complex with three buildings connected to each other on level 2, where there is a fitness room for everyone to use.

## Equipment & Features



### Basic equipment

- Balcony
- TV
- Bedclothes
- Private toilet
- Aircondition
- Cleaning utensils
- Internet/Wifi
- Private washing machine
- Towels
- Private parking space
- Vacuum cleaner



### Wellness

- Fitness room



### First supply

- Toilet paper
- Soap
- shampoo



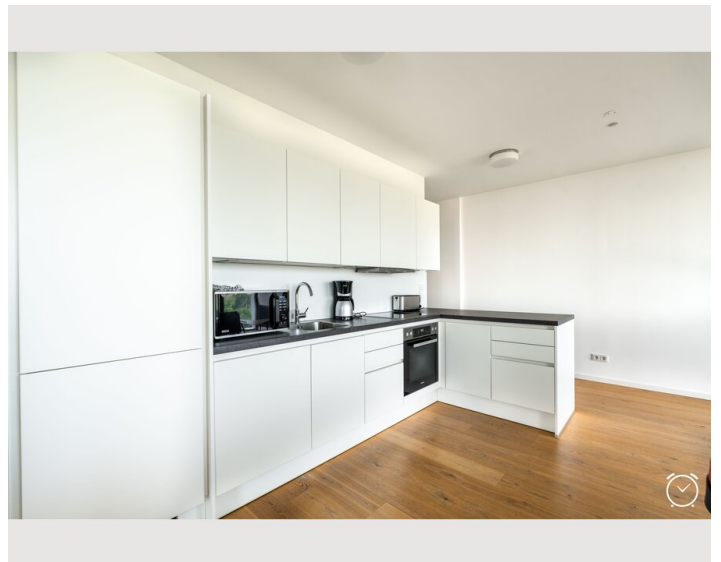
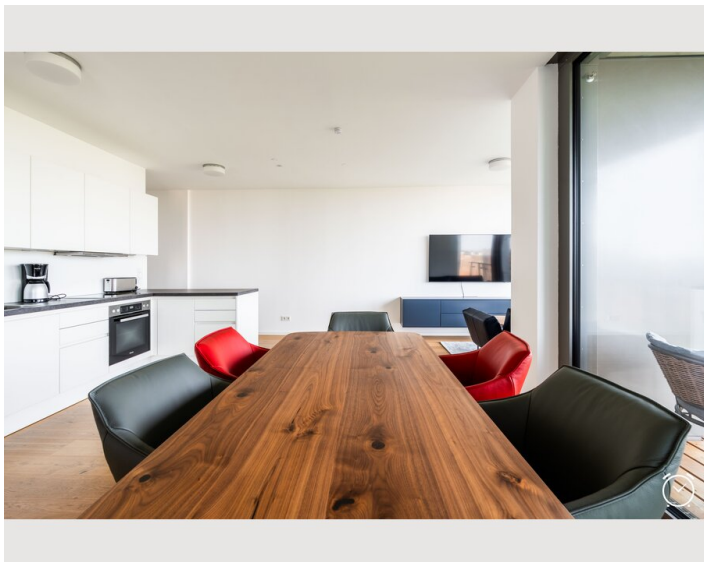
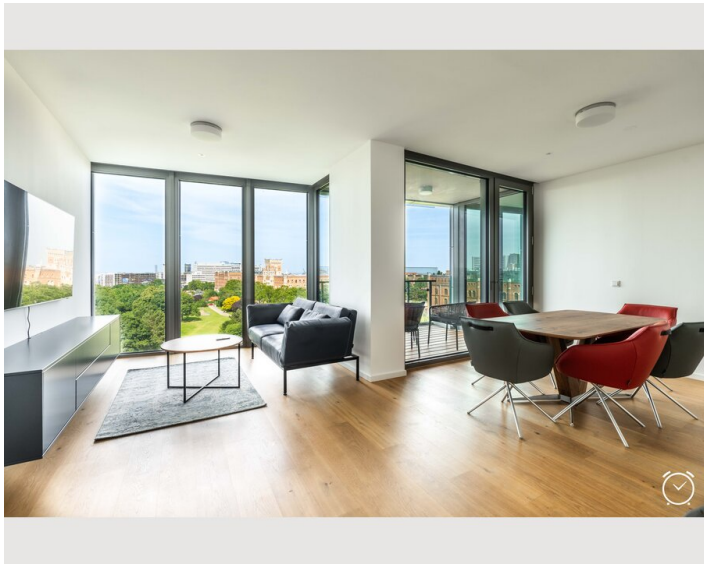
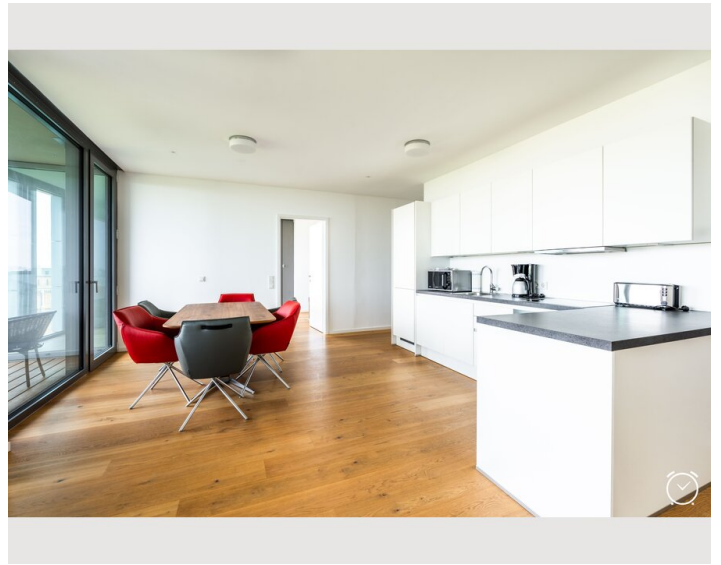
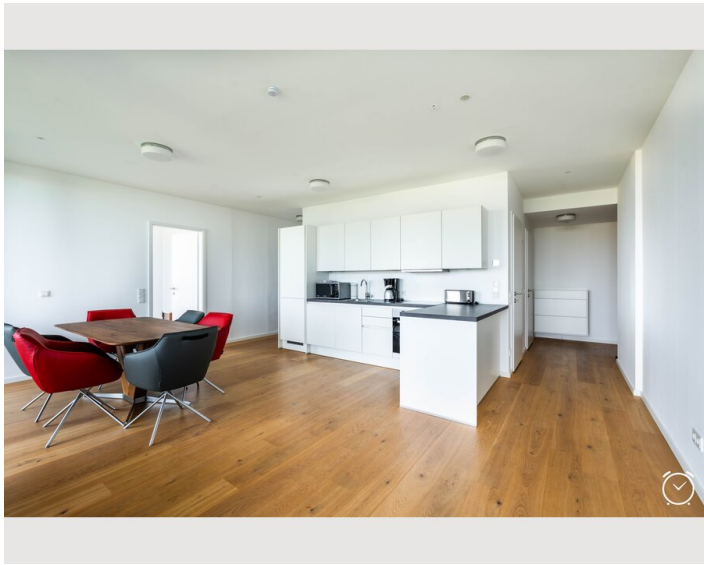
### Kitchen

- Private kitchen
- Glasses/Tableware
- Dishwasher
- Cooking utensils
- Filter coffee
- Microwave

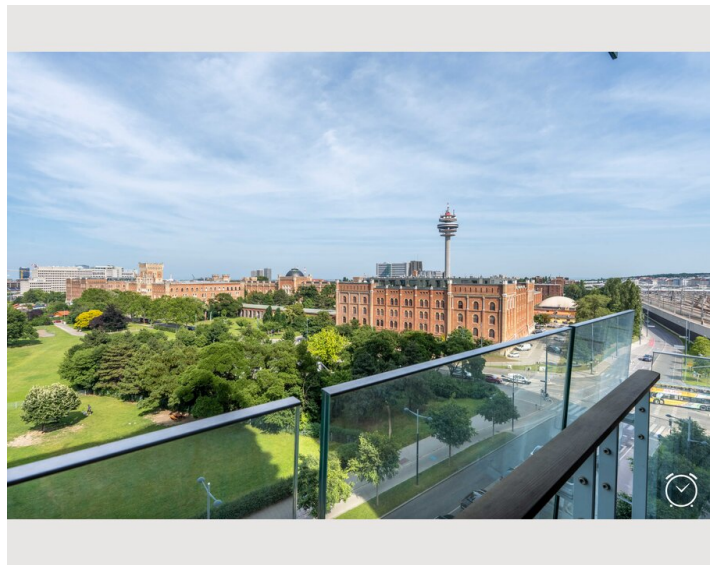
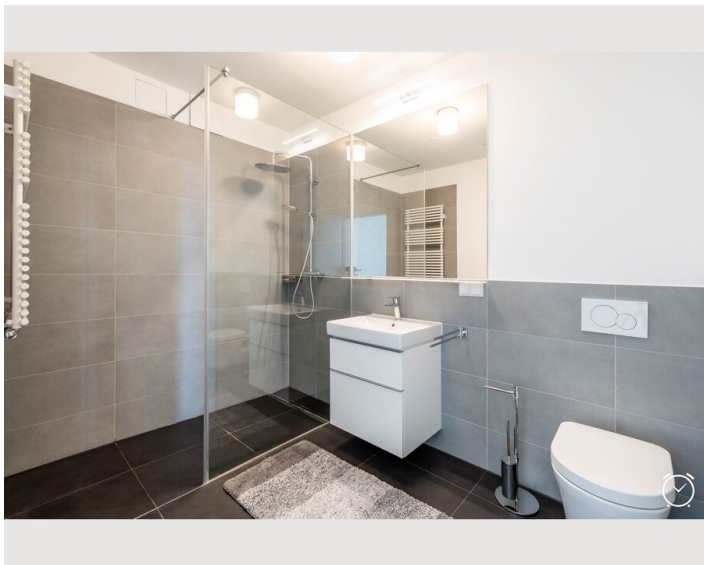
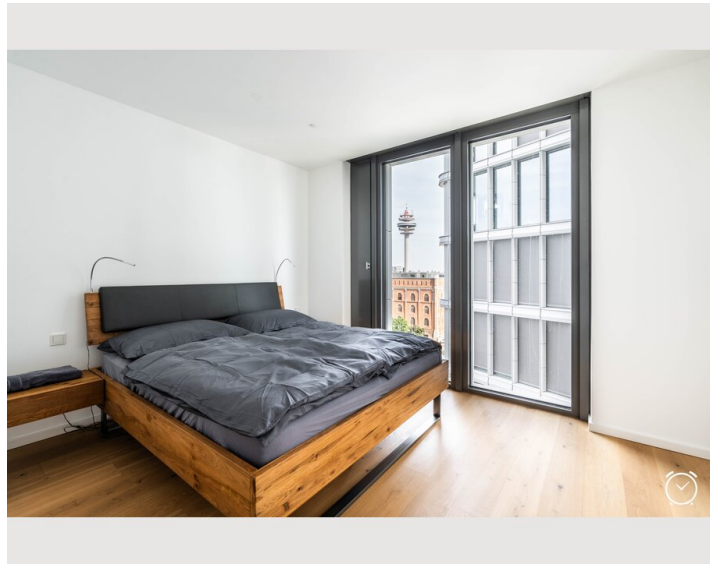
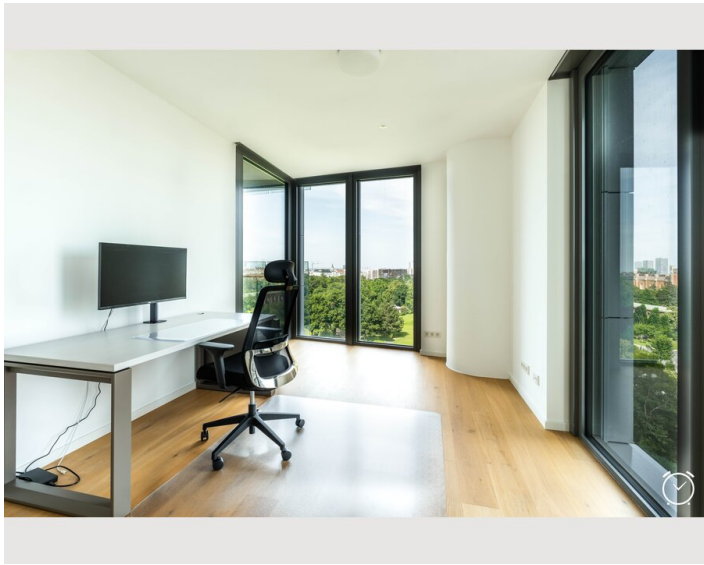
## Informations

- Smoking not allowed
- Pets forbidden
- Desk/Workplace

## Picture gallery

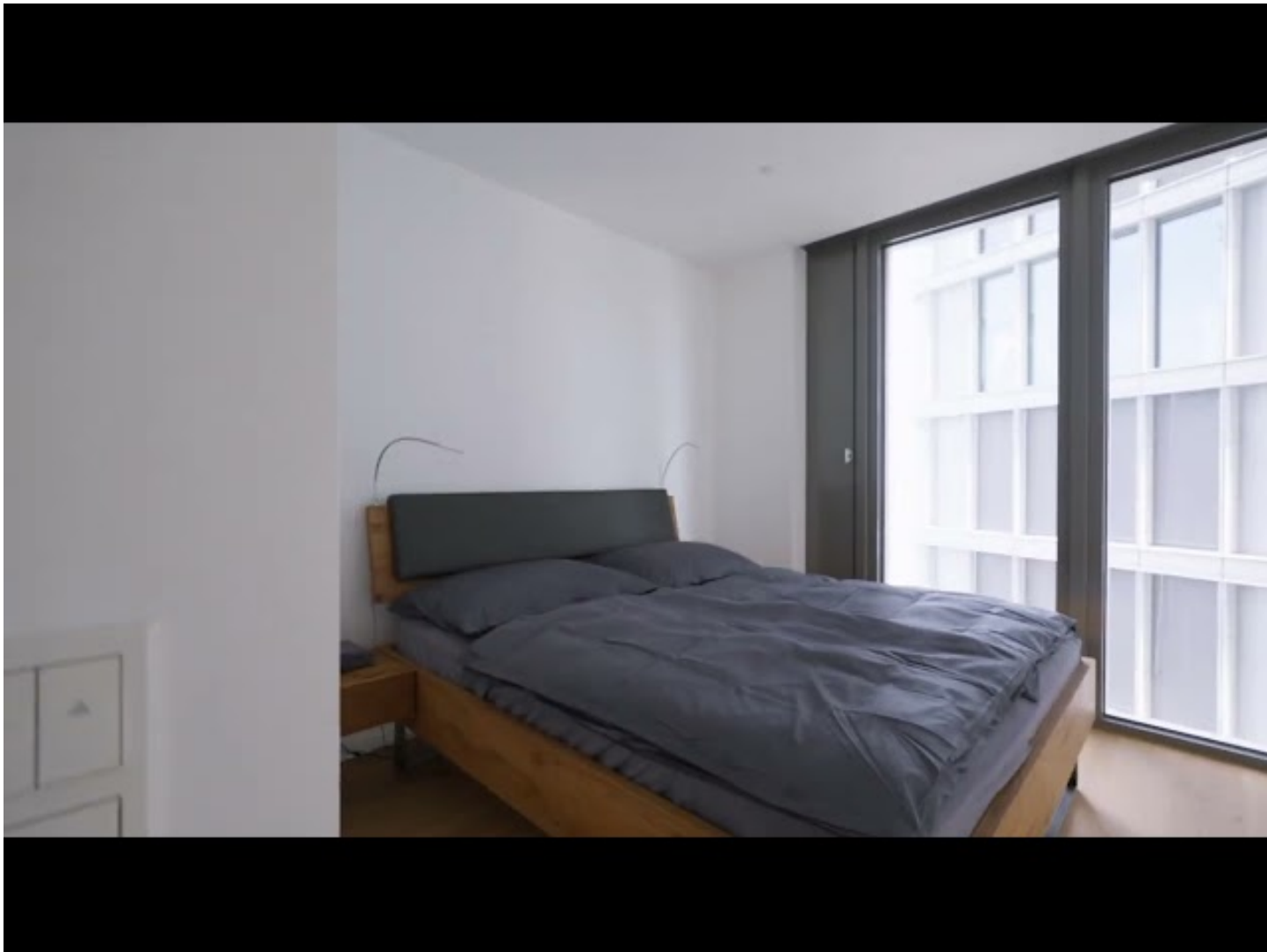







## Video

[Goto Video](#)



### Infrastructure

 distance 5 minutes

---

The main railway station is 5 minutes away. There are supermarkets, a pharmacy and the U1 underground line. The neighbouring areas of the Erste Campus and the Belvedere quarter between the flat and the main railway station are home to many restaurants and cafés.

## Location

