



STUDIO APARTMENT, 1030 VIENNA

Vienna CityApartments - Design 1

Object number: 3

[View and rent online](#)

Period	17/07/ - 17/08/2025
Number of persons	2
Total incl. VAT.	€ 1.937,50
Security deposit	€ 1.500,00

Quiet and modern apartment in the heart of Vienna



Living space

38m²



Maximum occupancy

4 Persons



Complete accommodation [?]

1 private bathroom 1 Living-Sleepingroom



1. floor

Elevator available



Check-in

14:00 - 00:00 Clock



Check-out

00:00 - 10:00 Clock

Sleeping options

Living and sleeping



1x Double bed (1,80 m x 2 m)



1x Sofa bed (2 persons)

Description of accommodation

Highlights:

- tube station offering services on the line U1 is only 1 minute walk away
- set in a great location - in the city center
- the Ernst Happel Stadion is within easy reach (10 minutes walk)
- close to the Hundertwasser House
- apartment was completely built and new furnished in 2022
- stylish modern décor and furnishings
- peaceful and quiet location
- 32 "HD flat TV with DVD Player
- FREE WiFi Highspeed Internet
- Cable TV with more than 200 int. channels
- Low-priced parking garage is just 1 subway station or a 10 minutes walk away (Euro 3 per 24 hours)
- Nespresso Coffemaker inside

This apartment is situated very close to the city center, anyway located in a quiet area with a big couch bed for 2 persons and one double bed.

The underground station (U3) is just a short walk away, from there you can reach the center of the city in approximately 7 minutes. It is an ideal residence for a relaxing and comfortable stay in Vienna. The Ernst Happel Stadium is just a stone's throw (15 minutes) from the apartment as well as the Hundertwasser House (10 minutes walk away). This is a convenient location within easy reach of many restaurants, supermarkets and shops (Erdbergstrasse).

Equipment & Features



Basic equipment

- Internet/Wifi
- Private washing machine
- Bedclothes
- Private toilet
- Iron & ironing board
- Hairdryer
- TV
- Private dryer
- Towels
- Vacuum cleaner
- Cleaning utensils



First supply

- Toilet paper
- Soap



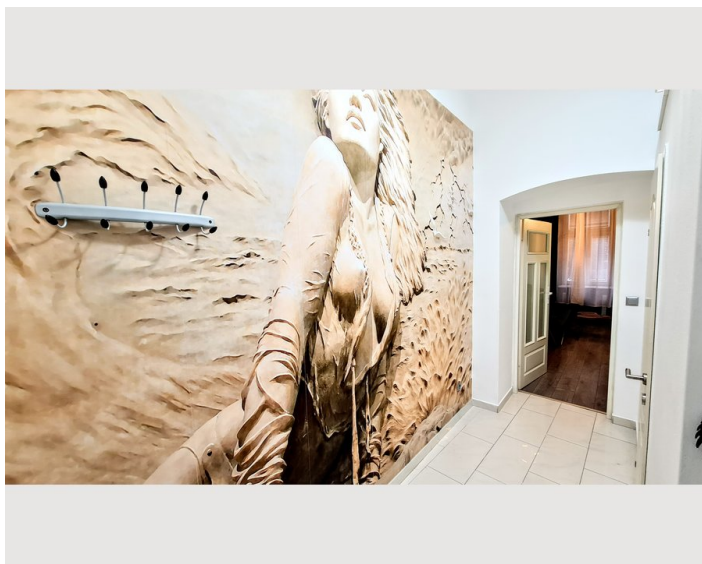
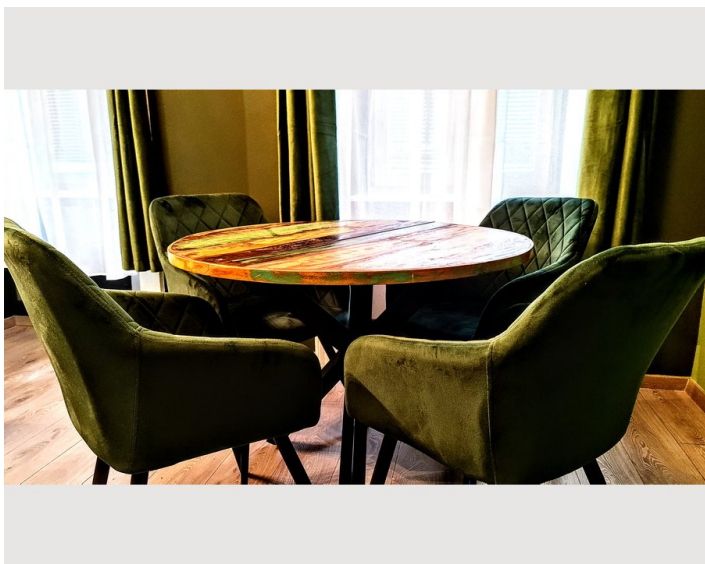
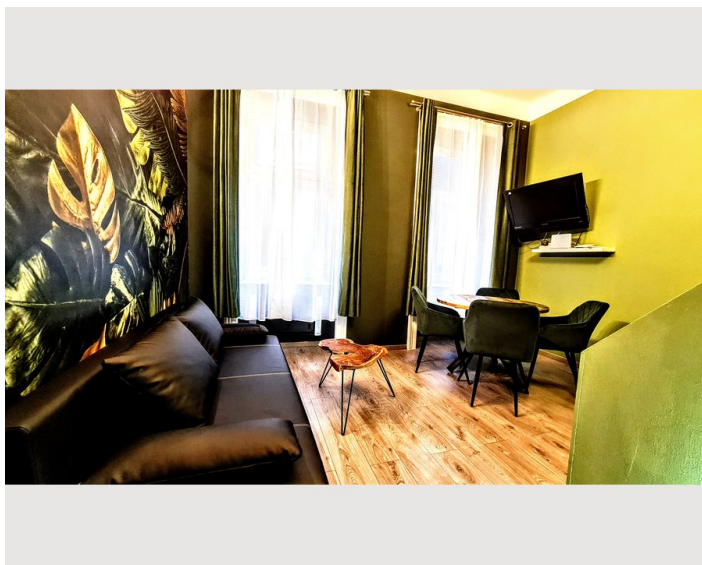
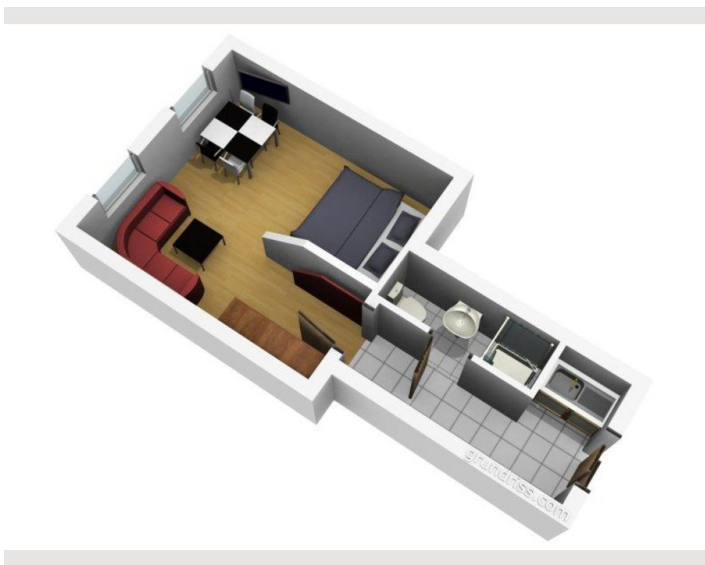
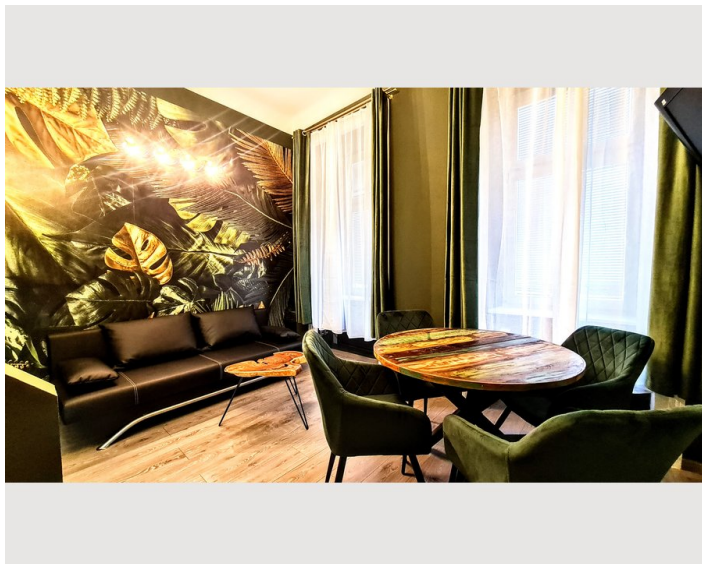
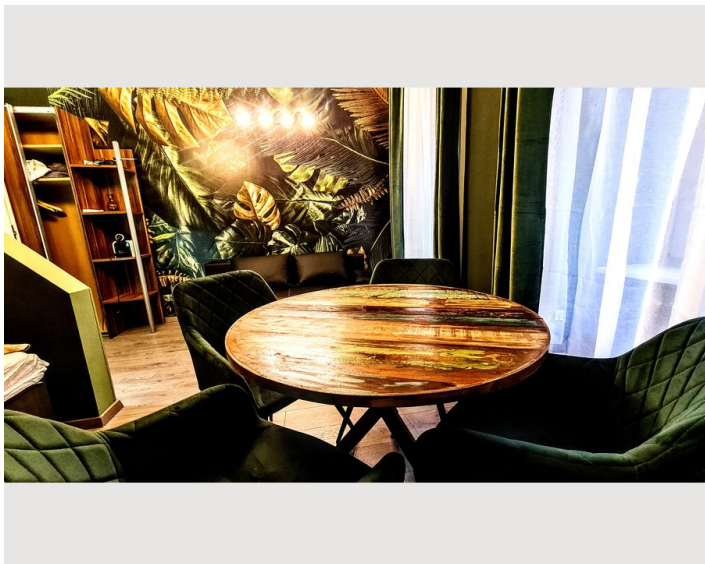
Kitchen

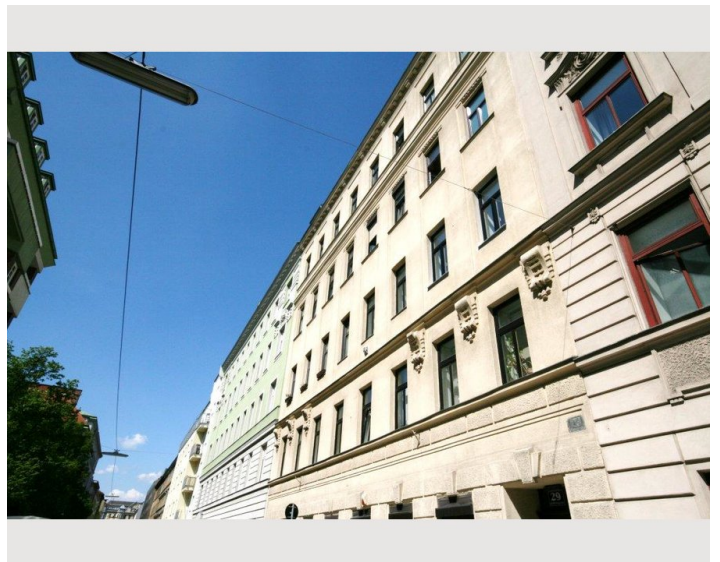
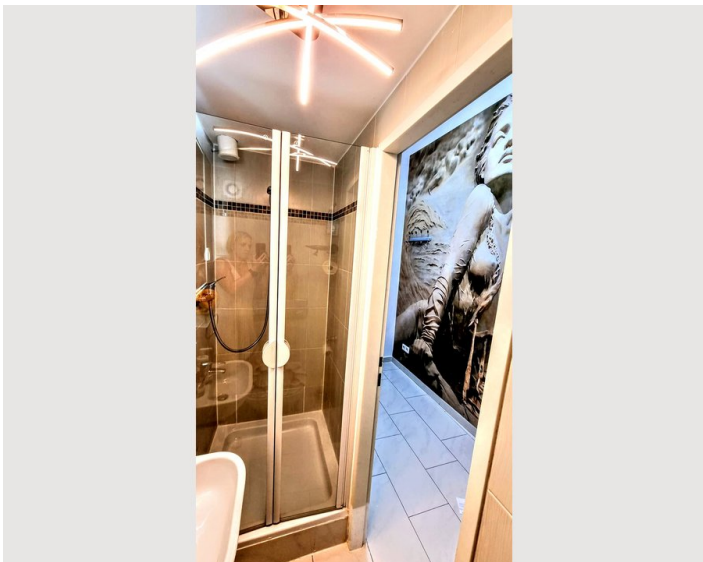
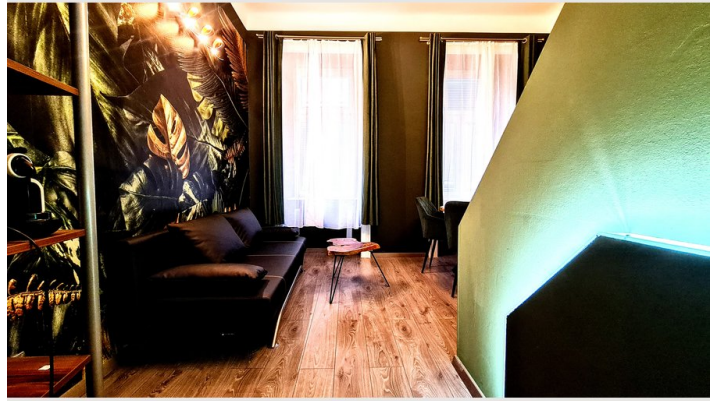
- Kitchenette
- Glasses/Tableware
- Filter coffee
- Cooking utensils
- Espresso machine

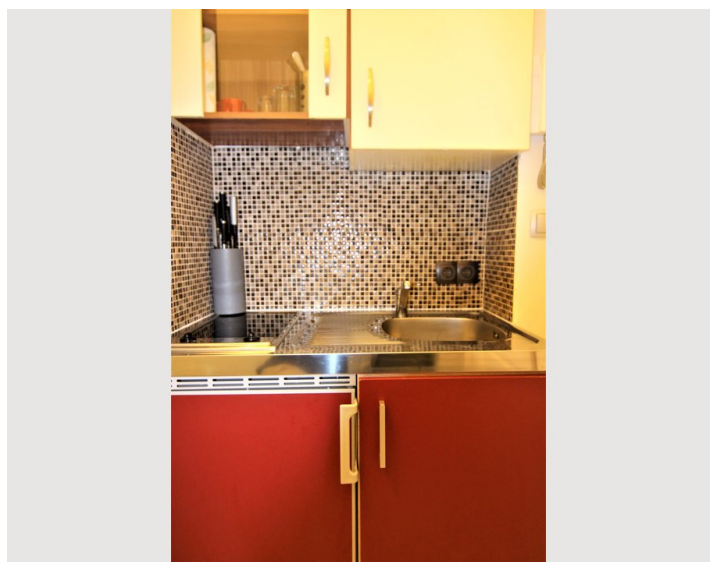
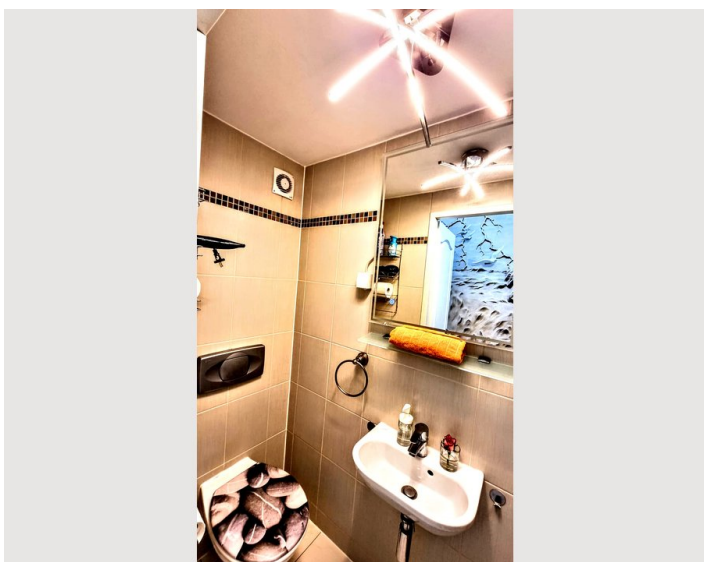
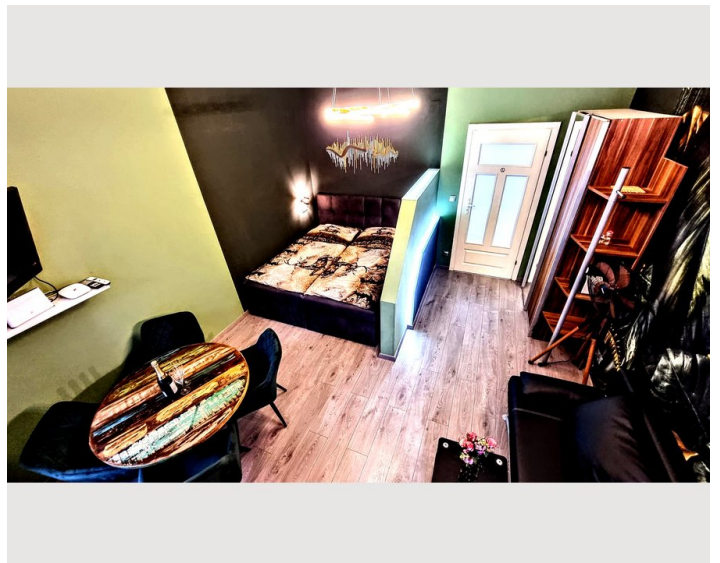
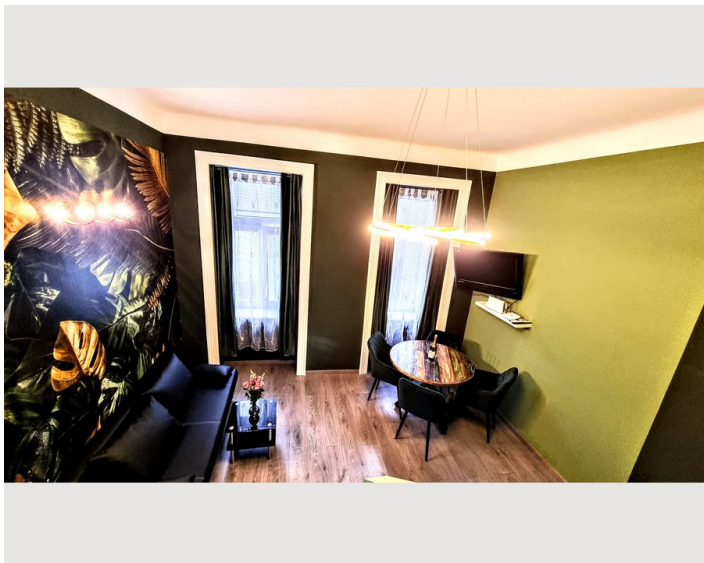
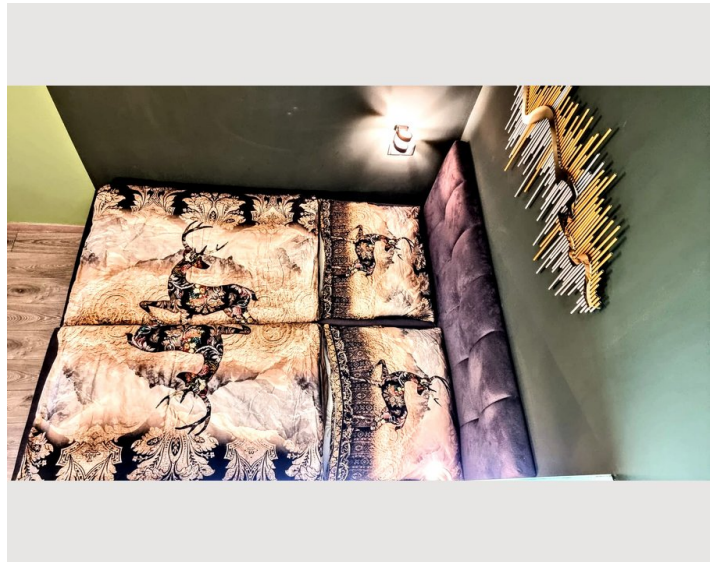
Informations

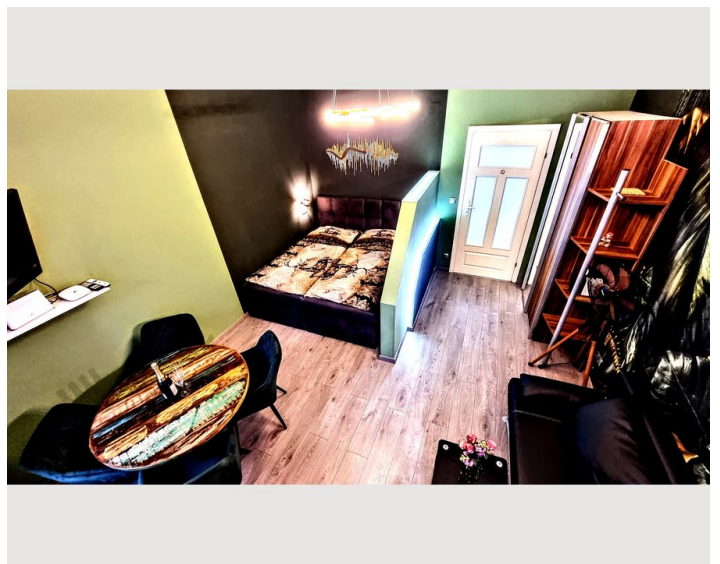
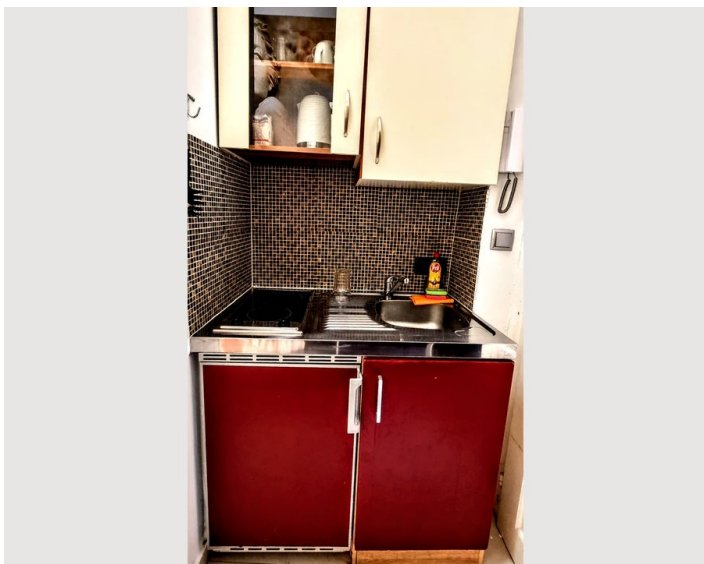
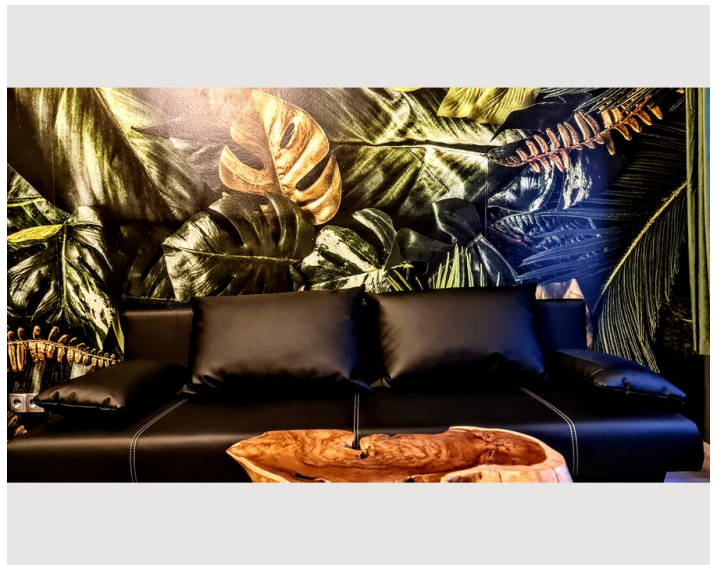
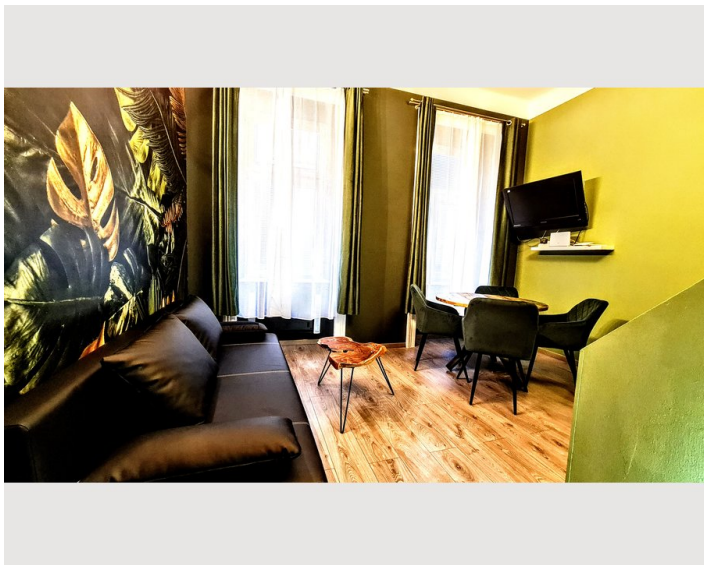
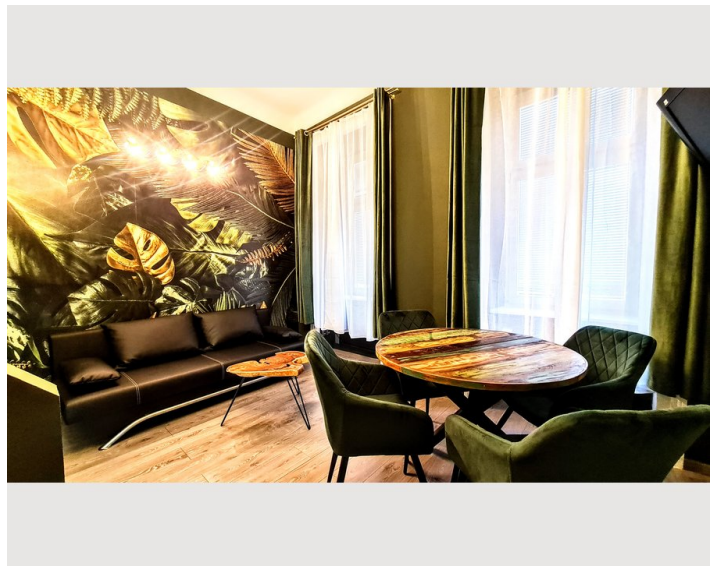
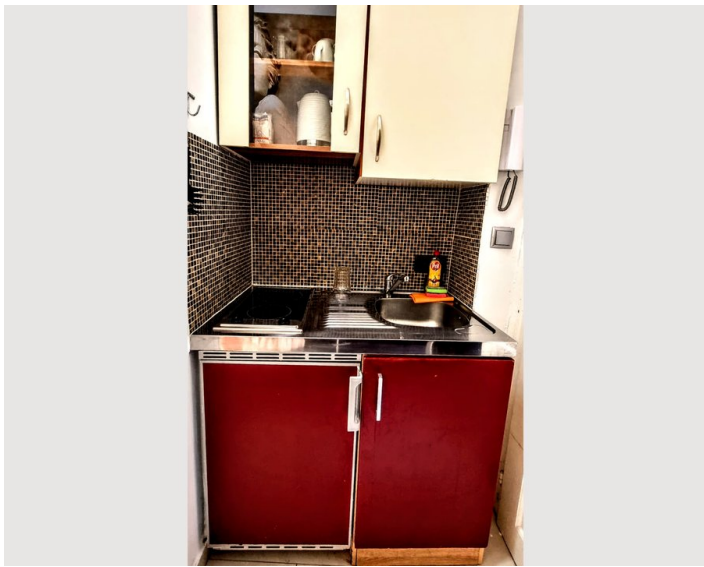
- Suitable for construction workers
- Smoking not allowed
- Desk/Workplace
- Pets forbidden
- Bicycle room free of charge
- Suitable for children
- Short-term parking zone subject to a charge
- Private entrance
- Regular cleaning at extra cost

Picture gallery











Infrastructure

🕒 20 minutes by metro

Very quiet location but near the city center

Location

