



STUDIO APARTMENT, 1160 VIENNA

## Sound insulated, urban Oasis with Skyline Views & 12m<sup>2</sup> Private Terrace, perfect for music and sports

Object number: JQNG1

[View and rent online](#)

40 m<sup>2</sup> apartment + 12 m<sup>2</sup> terrace Top-floor unit with a panoramic view of Vienna — from Stephansdom and Rathaus to Kahlenberg and DC Tower.

<b>Period</b>	31/05/ - 01/07/2026
<b>Number of persons</b>	2
<b>Total incl. VAT.</b>	€ 1.649,30
Security deposit	€ 1.200,00



### Living space

40m<sup>2</sup>



### Maximum occupancy

2 Persons



### Complete accommodation <sup>?</sup>

1 Private bathroom 1 Living-Sleepingroom



### 5. floor

Elevator available



### Check-in

12:00 - 23:30 Clock



### Check-out

09:00 - 23:00 Clock

## Sleeping options

### Living & Sleeping



1x Double bed (1,60 m x 2 m)

## Description of accommodation

Start your mornings on a sun-drenched terrace with stylish garden furniture — perfect for sunbathing or enjoying a cocktail in the evening breeze.

The apartment is fully furnished and ready for immediate move-in.

It features high-quality designer furniture, (such as Westwing), and is styled in a natural, calming palette of grey, olive green, and dark wood tones.

Decorated with hummingbird motifs and lush greenery, the apartment exudes the charm of a peaceful jungle retreat in the heart of the city.

Highlights:

- Fast WiFi and wall-mounted Smart TV (YouTube, Netflix, browser access)
- Modern kitchen with new appliances, elegant tableware, capsule coffee machine — plus tea and cookies to welcome you
- Large bed with a comfortable mattress and built-in storage
- Spacious bathtub
- Bonus multi-use niche: perfect as a home office, walk-in wardrobe, yoga/meditation/fitness or music space

Exceptional soundproofing thanks to thick walls — ideal for musicians or anyone who values privacy.

Extras:

- Shared laundry room in the building, available by appointment
- Beautiful private courtyard filled with plants and flowers, with seating for residents

## Equipment & Features



### Basic equipment

- Terrace
- Garden sharing
- TV
- Community dryer
- Towels
- Vacuum cleaner
- Cleaning utensils
- Roof-terrace
- Internet/Wifi
- Community washing machine
- Bedclothes
- Private toilet
- Iron & ironing board
- Hairdryer



### First supply

- Toilet paper
- Soap
- shampoo
- Nespresso capsules



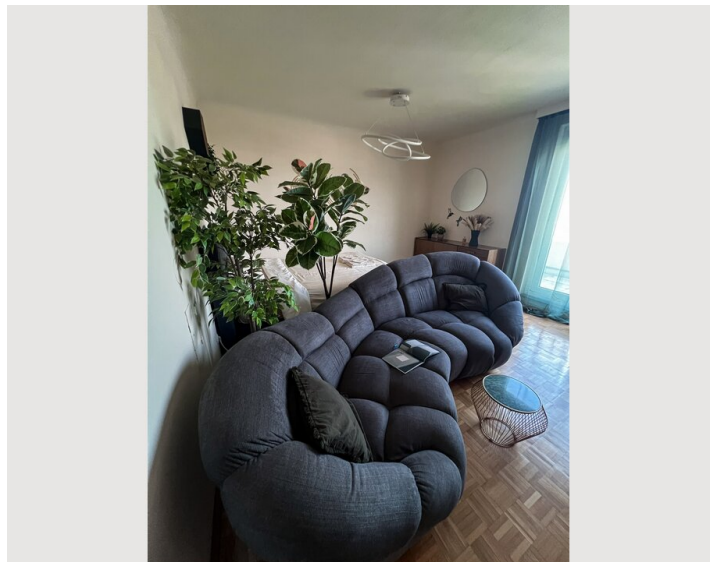
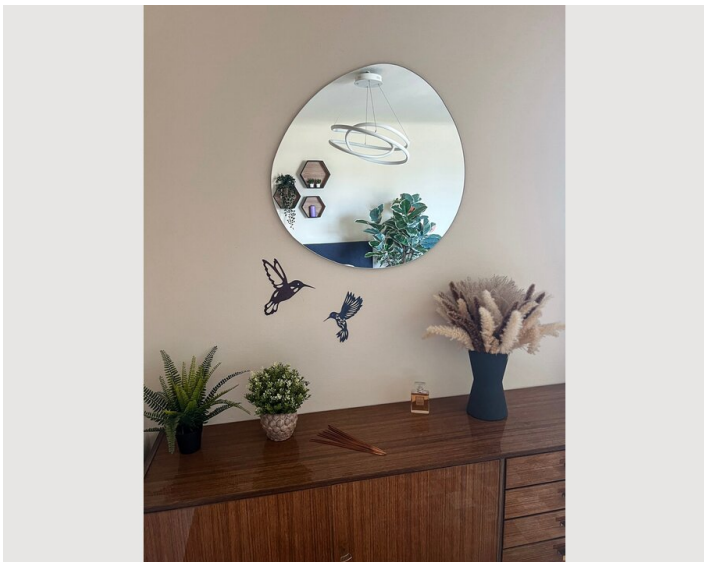
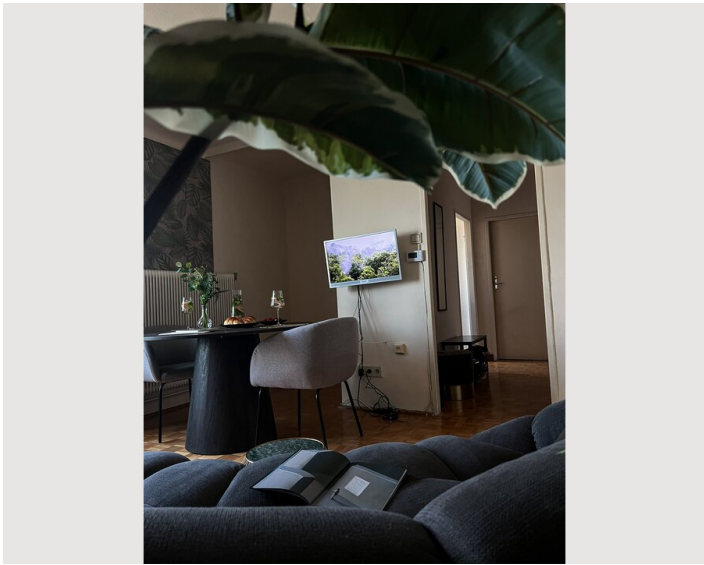
### Kitchen

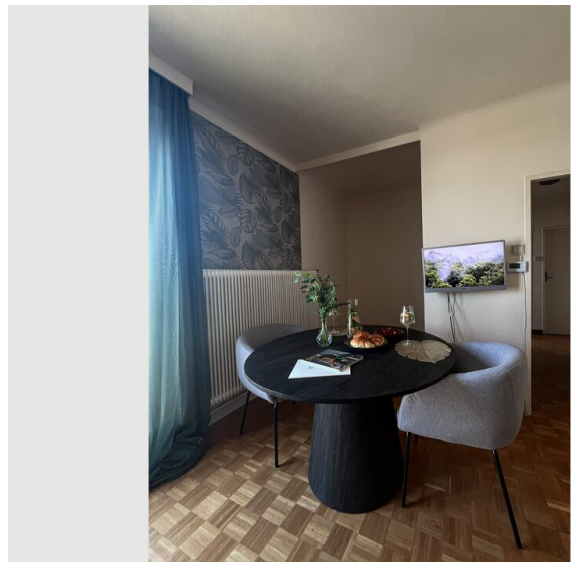
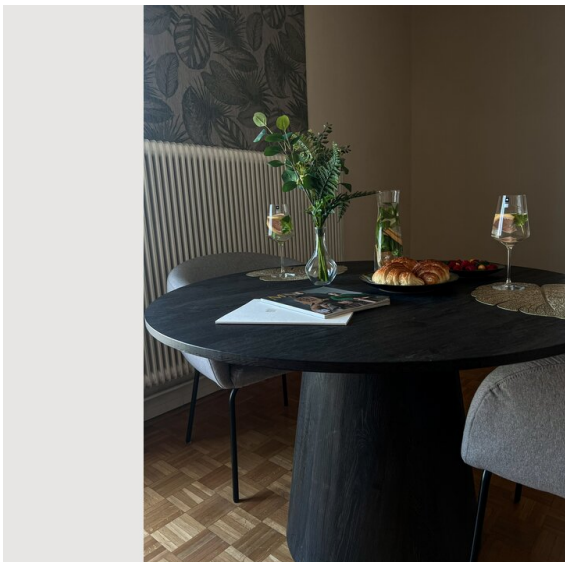
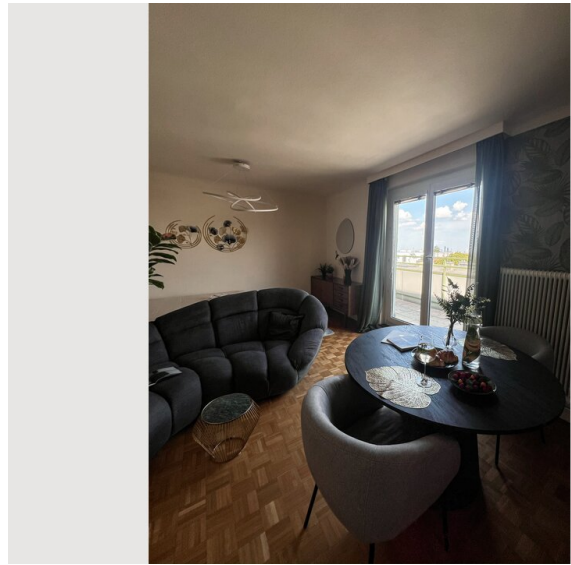
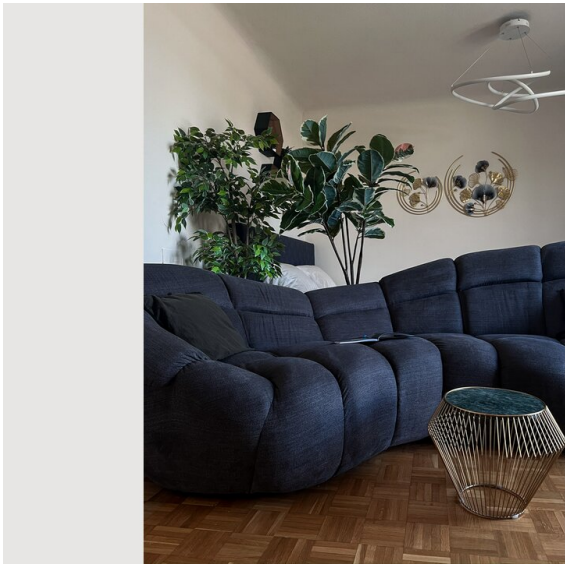
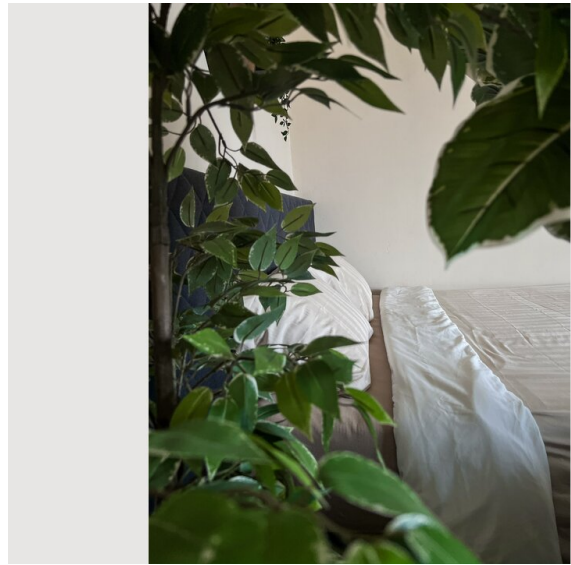
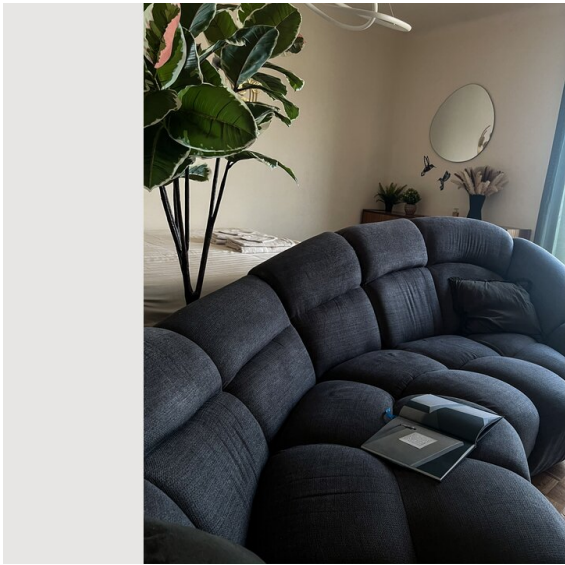
- Private kitchen
- Glasses/Tableware
- Microwave
- Cooking utensils
- Espresso machine

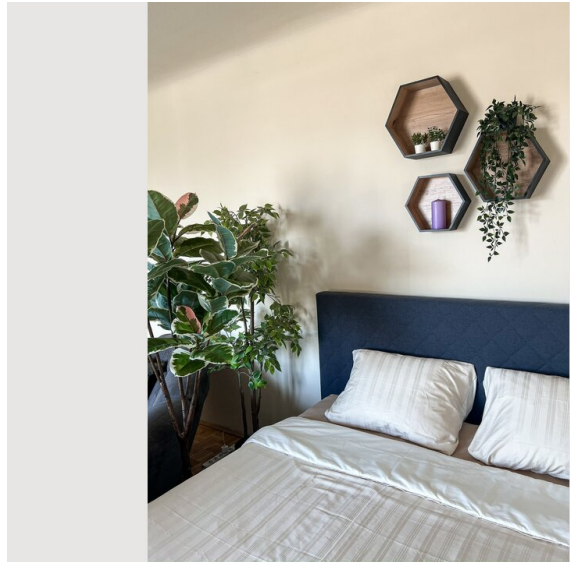
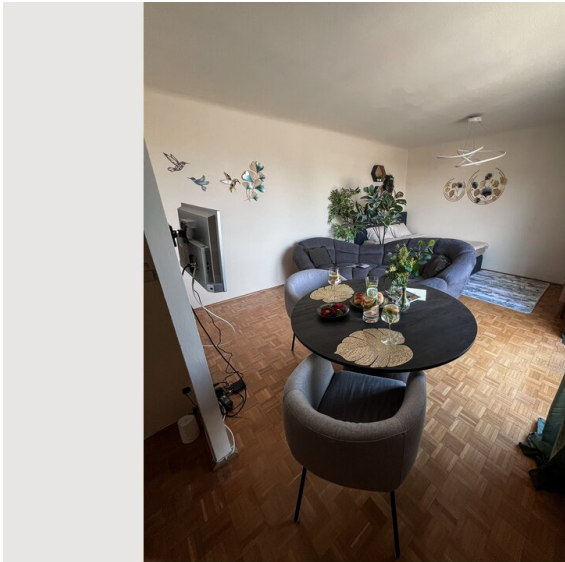
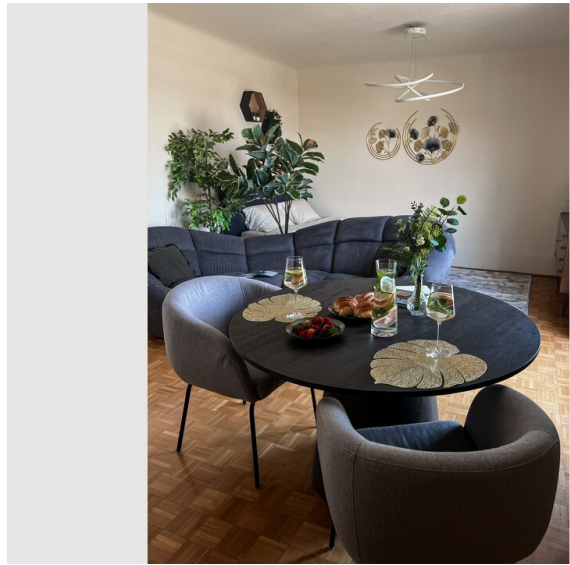
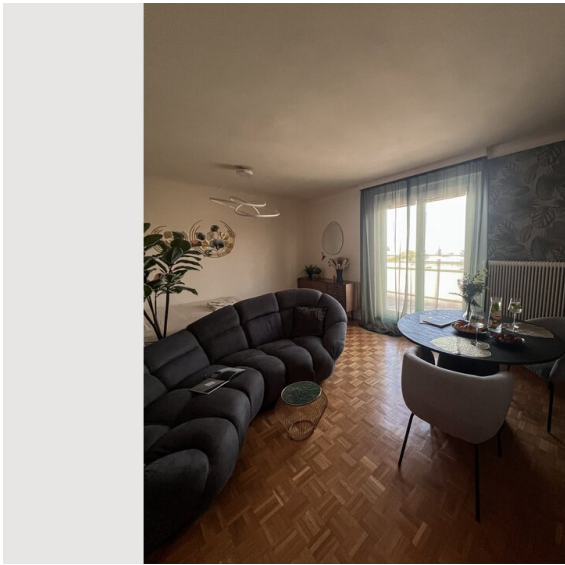
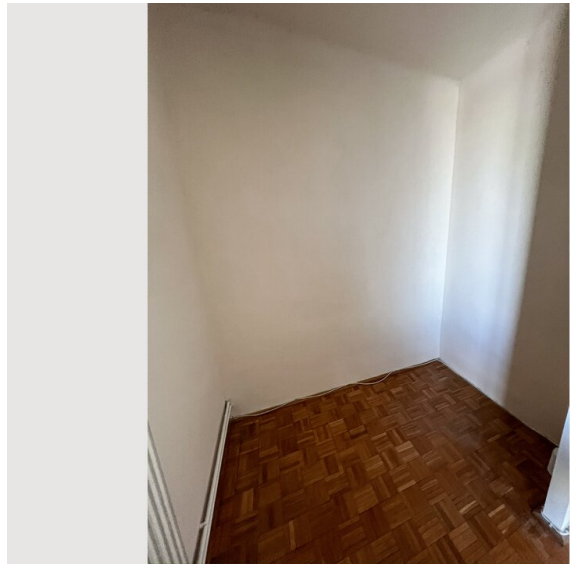
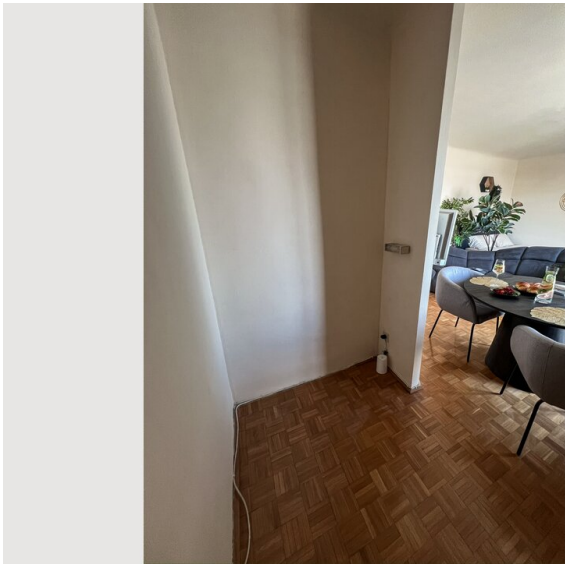
## Informations

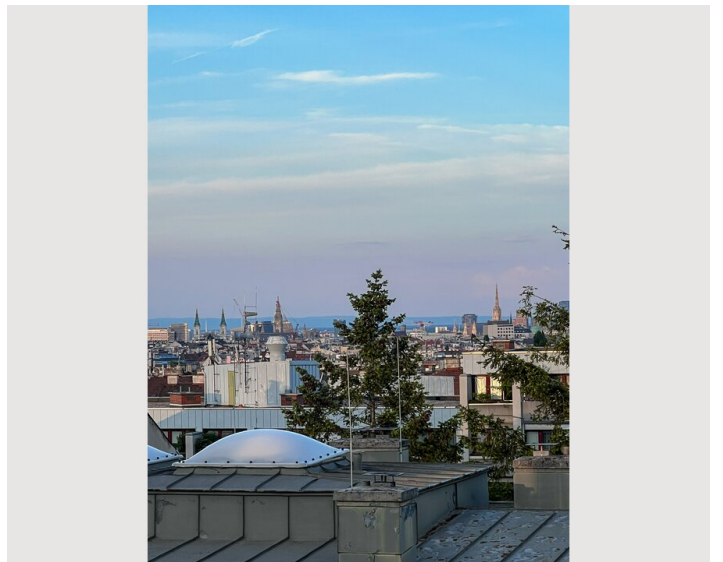
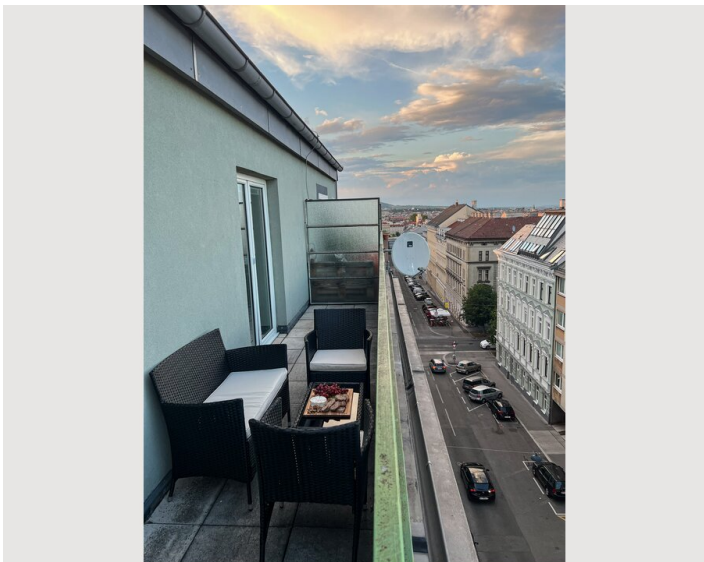
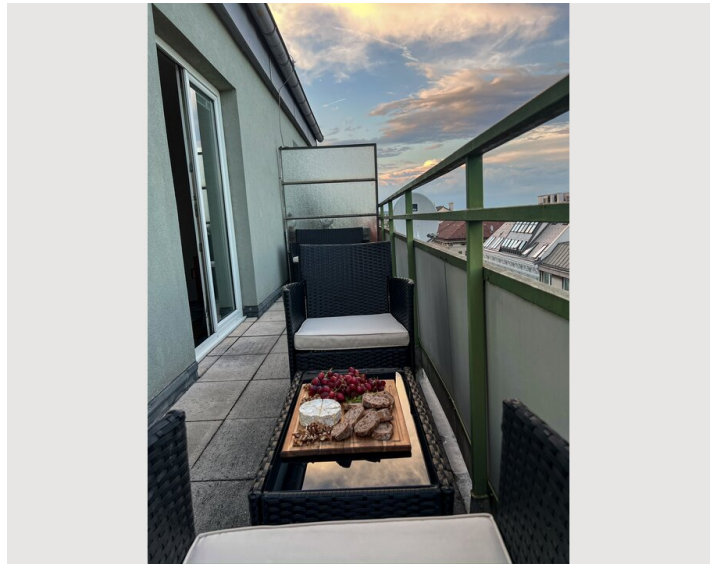
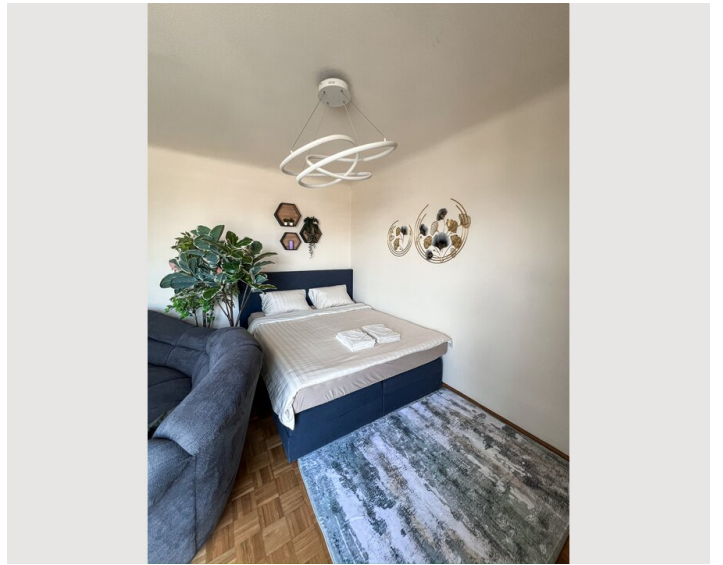
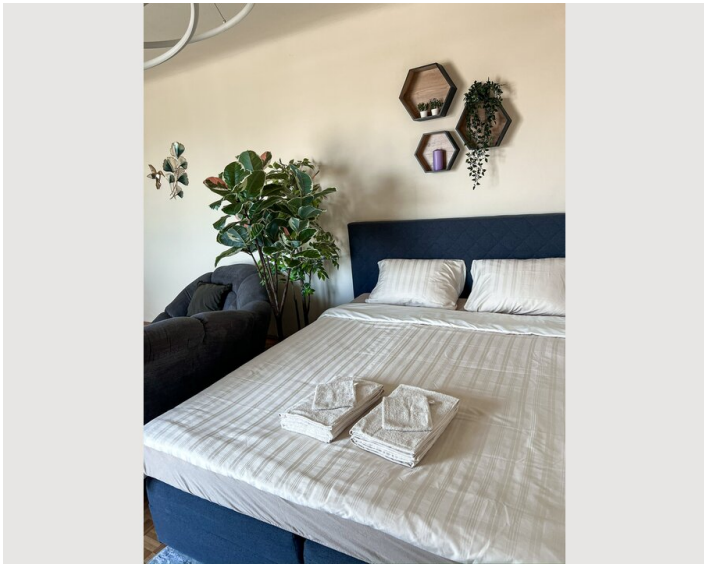
- Suitable for construction workers
- Smoking not allowed
- Desk/Workplace
- Regular cleaning at extra cost
- Suitable for children
- Short-term parking zone subject to a charge
- Pets on request

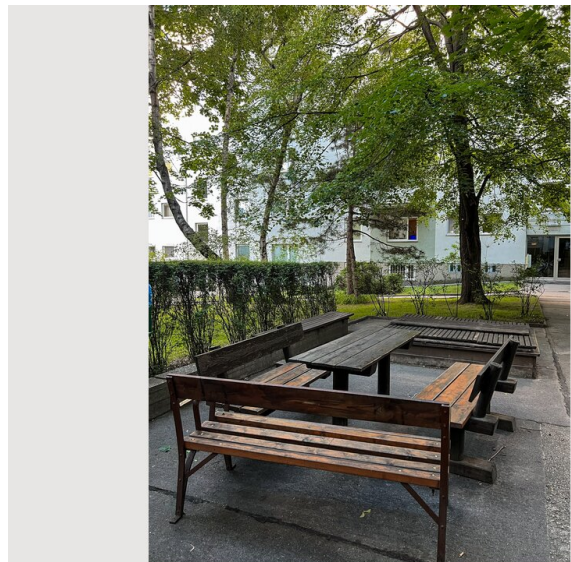
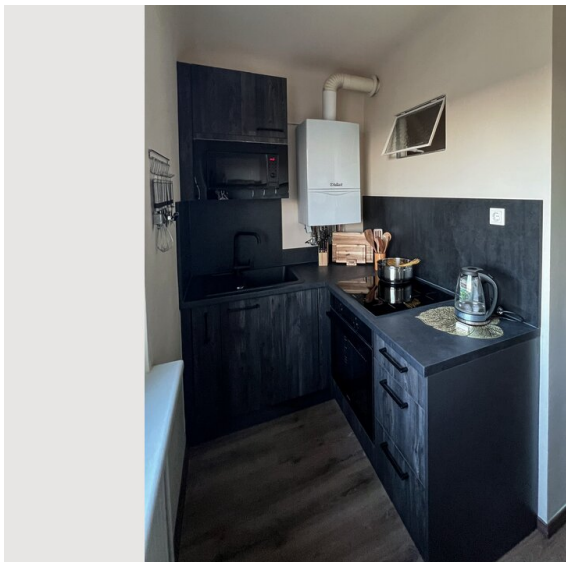
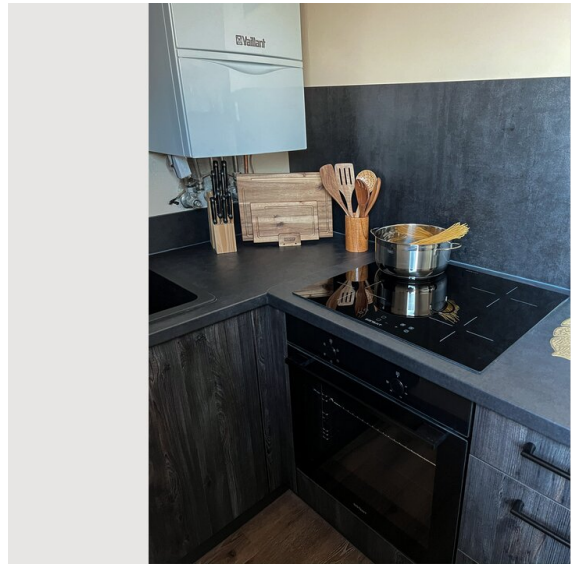
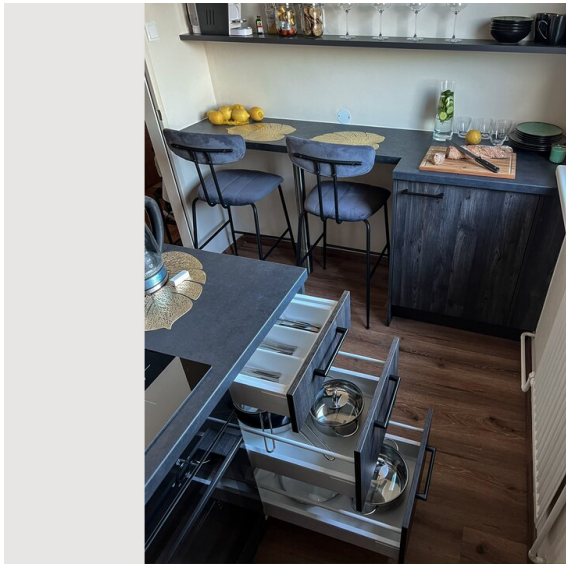
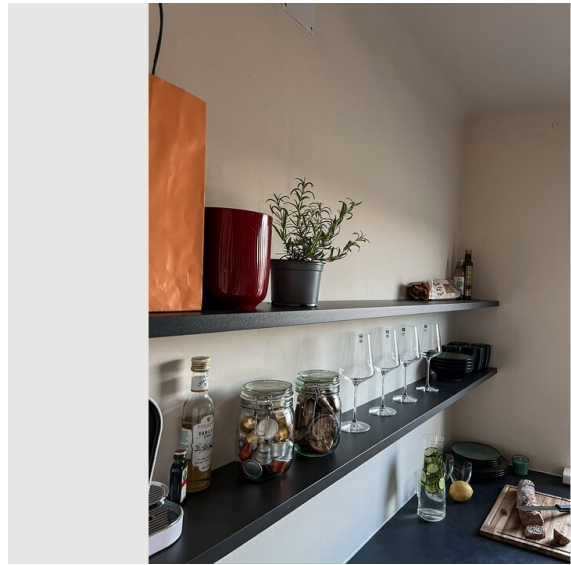
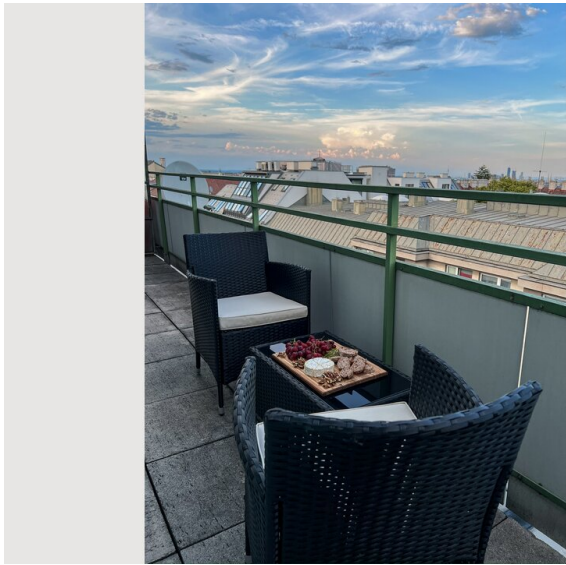
## Picture gallery

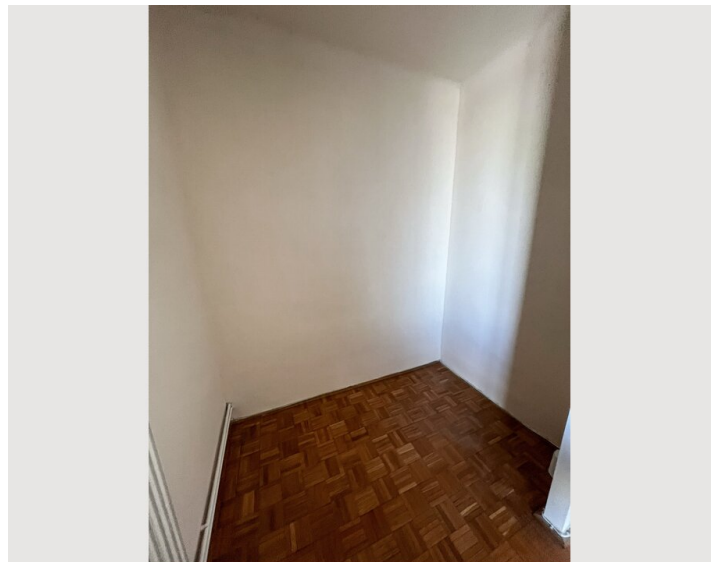
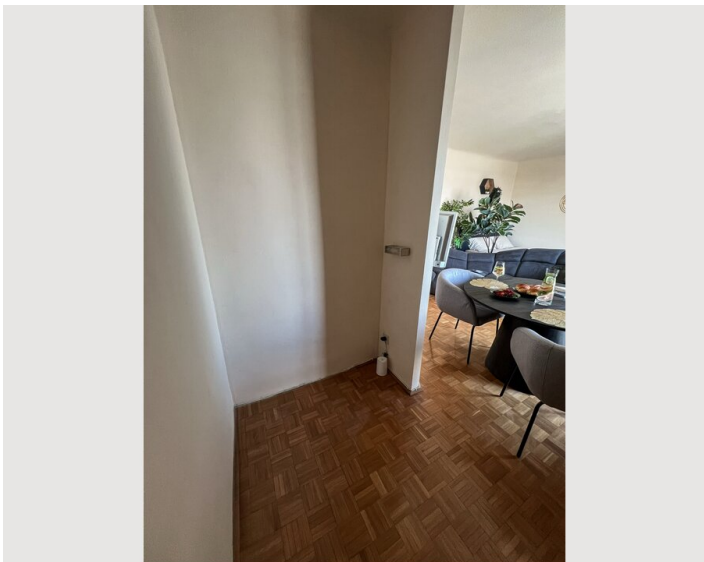
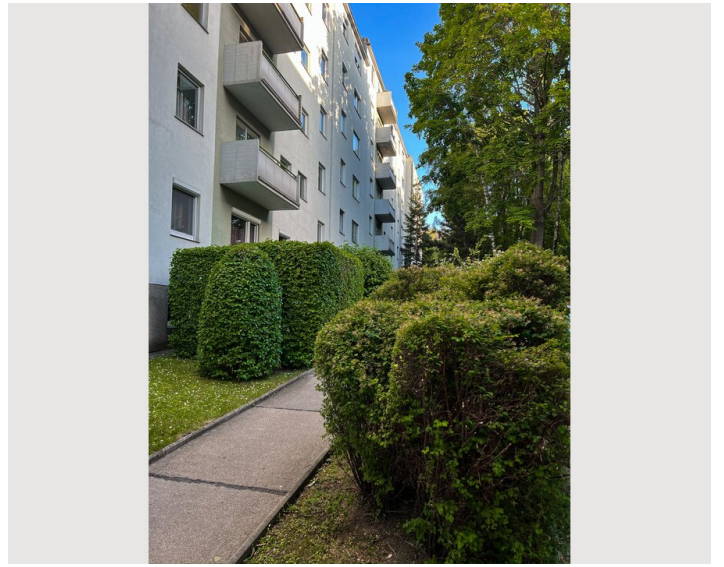
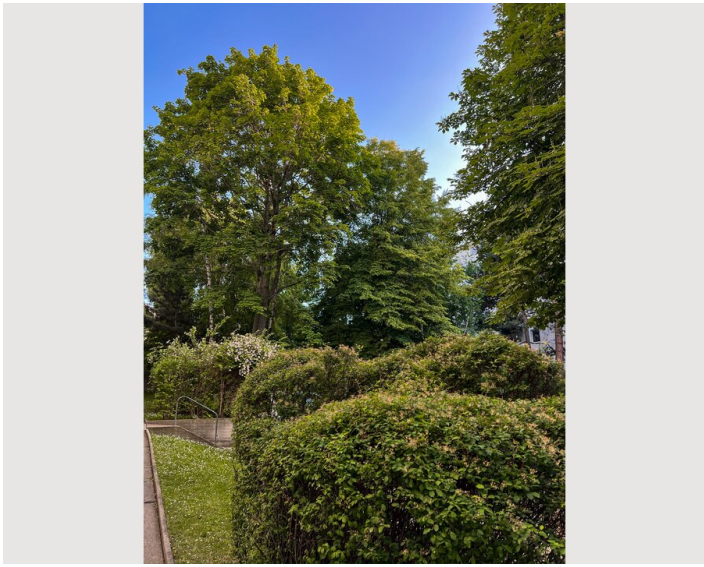


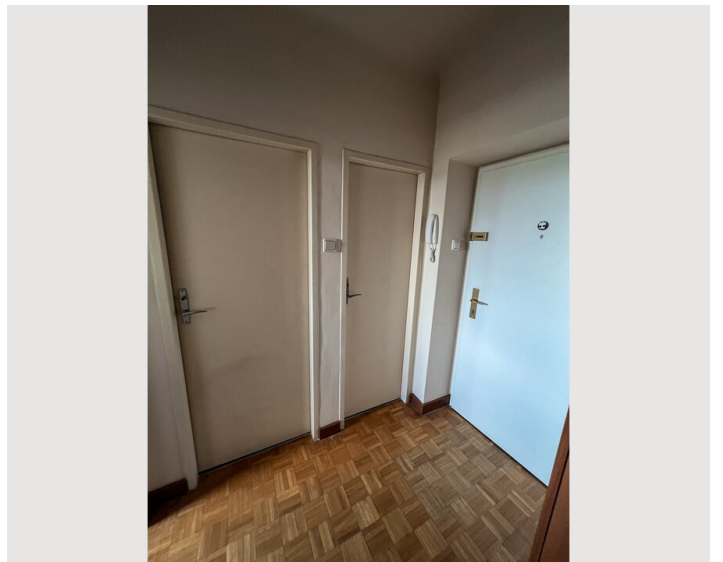
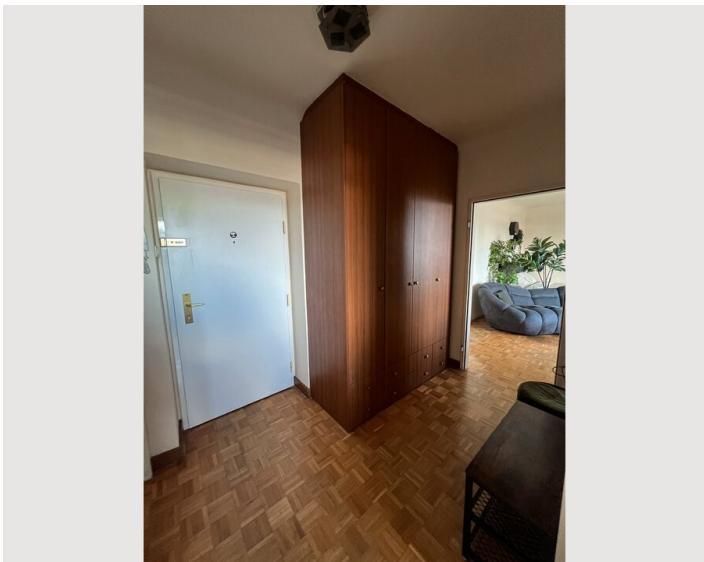
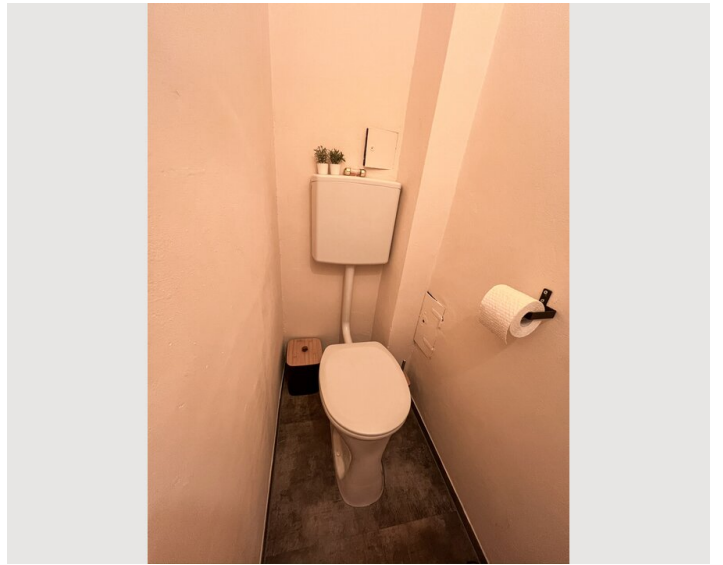
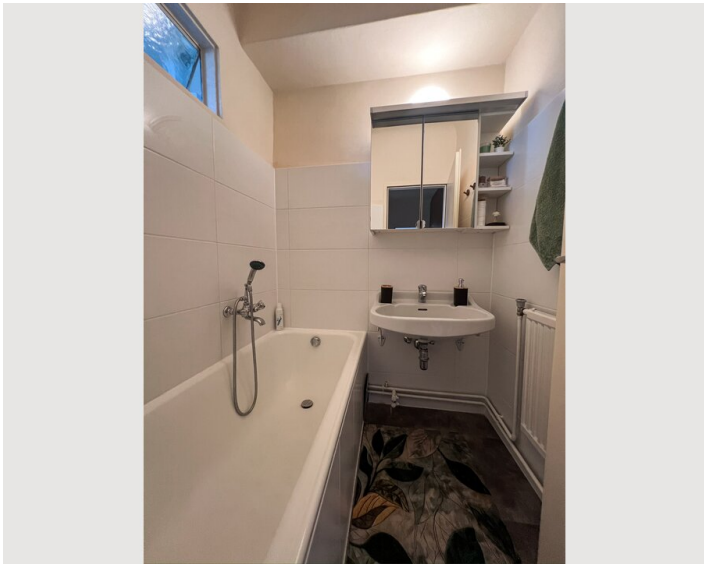
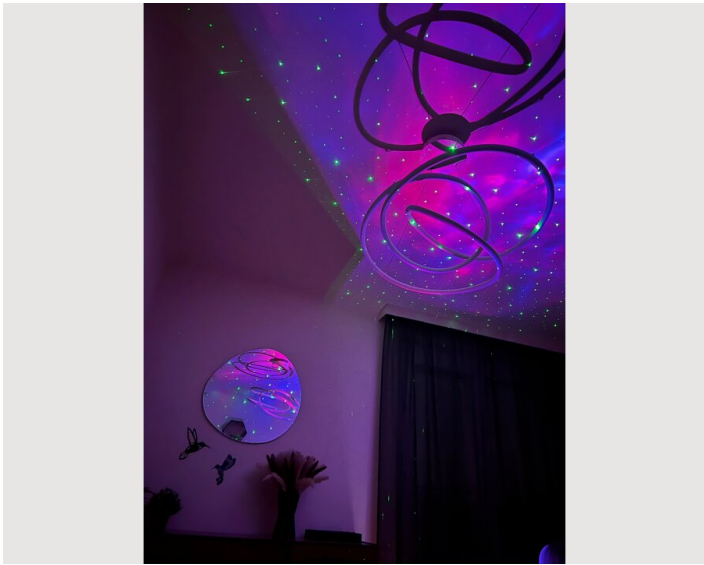


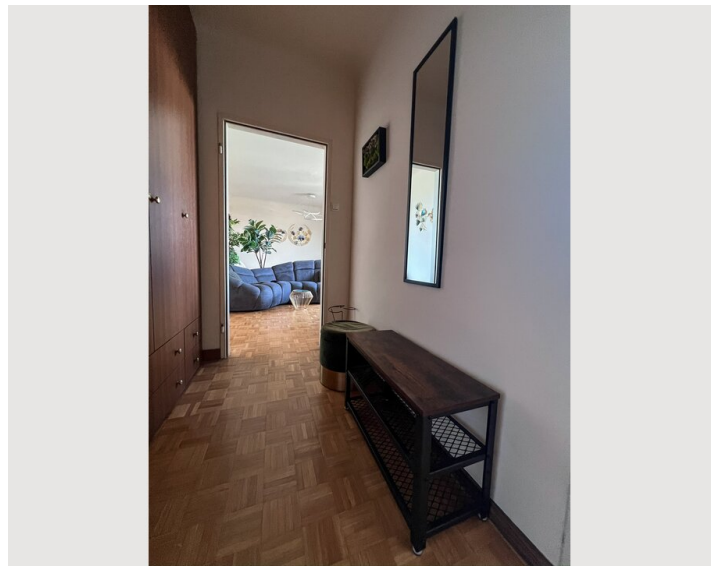
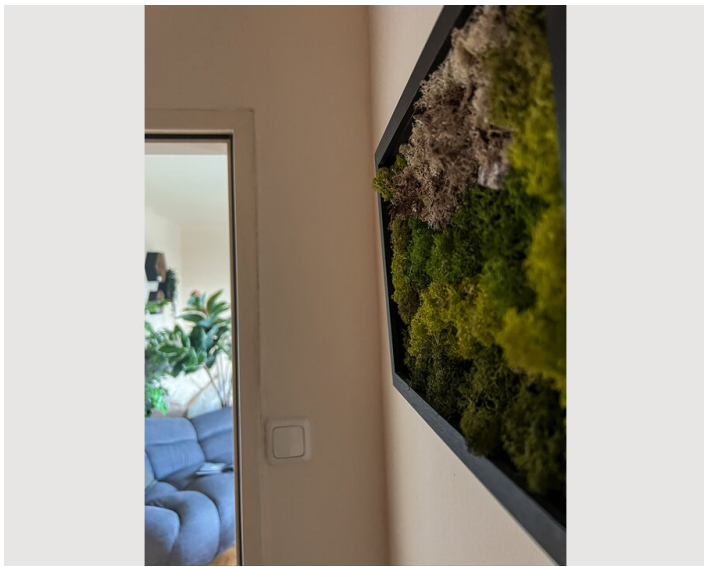












## Infrastructure

 2 min

Location:

- Public transport: 20 min to the 1st District, 15 min to Westbahnhof
- Walking distance: Ottakring Brewery & Museum (2 min), Stadthalle concert hall (16 min), Lugner City shopping mall (15 min)
- Bike expressway under development
- Optional parking space available for an additional fee

## Location

