



2 ROOM APARTMENT, 1020 VIENNA

Penthouse-Flair close to Prater

Object number: KQPO1

[View and rent online](#)

Period	01/05/ - 31/05/2026
Number of persons	2
Total incl. VAT.	€ 3.165,52
Security deposit	€ 2.000,00

*Well-designed 2-room apartment with terrace and panoramic view over Vienna *Close to Prater and Danube Island – quick connection to the city center (U1/U2, trams O and 2) *SPA (sauna, infrared cabin, relaxation and outdoor area in the building, avai



Living space

55m²



Maximum occupancy

2 Persons



Complete accommodation [?]

1 Private bathroom 1 Separated bedroom 1 Living-Sleepingroom



13. floor

Elevator available



Check-in

16:00 - 23:00 Clock



Check-out

10:00 - 12:00 Clock

Sleeping options

Sleeping room



1x Double bed (1,80 m x 2 m)

Living & Sleeping



1x Double bed (1,40 m x 2 m)

Descripton of accommodation

- *Spacious living room with open, high-quality kitchen (Miele appliances)
- *Workstation with 2 monitors
- *Dining table for 6 people
- *Large sofa bed (1.4m x 2m) with flat-screen TV
- *Bedroom (1.8m x 2m) with wardrobe
- *Large bathroom with walk-in shower (high quality)
- *Storage room

Equipment & Features

Basic equipment

- Terrace
 - Music system/docking station
 - Private washing machine
 - Towels
 - Vacuum cleaner
 - Cleaning utensils
 - Internet/Wifi
 - TV
 - Bedclothes
 - Private toilet
 - Iron & ironing board
 - Hairdryer
-

Fireplace

- Grill
-

Wellness

- Sauna
 - Infrared cabin
-

First supply

- Toilet paper
 - Soap
 - shampoo
 - Nespresso capsules
-

Kitchen

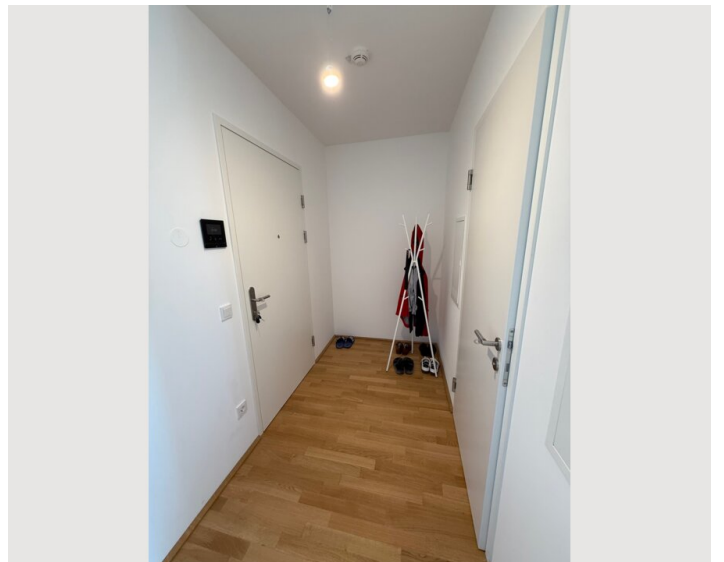
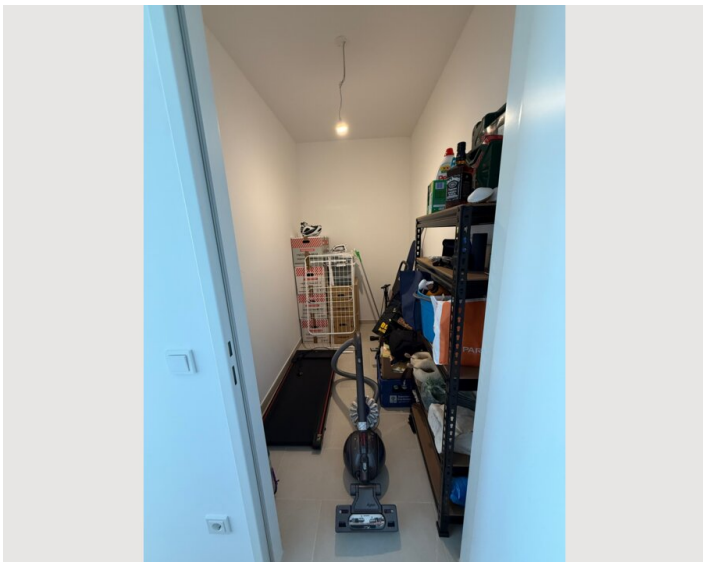
- Private kitchen
- Espresso machine
- Glasses/Tableware
- Dishwasher

Informations

- Pets forbidden
- Bicycle room free of charge



Picture gallery







Infrastructure

-  Metro and Tram
-  Billa - directly in front of the door
-  Airport is 20min by Uber/Taxi
-  Vienna main station or west station approx. 30min by public transport
-  20min by foot, public transport or bike

The apartment is located in a newly developed district (Nordbahnhof) and offers excellent infrastructure, including several supermarkets, a drugstore, pharmacy, fitness studios, and more.

Location

