



2 ROOM APARTMENT, 4082 ASCHACH/DONAU

Beautiful and cozy old building apartment on the Danube with beach

Object number: PFBE1

[View and rent online](#)

Creative Riverside Apartment with Beach Access

Period	21/12/2025 - 21/01/2026
Number of persons	2
Total incl. VAT.	€ 1.385,76
Security deposit	€ 1.000,00



Living space

70m²



Maximum occupancy

4 Persons



Complete accommodation [?]

1 Private bathroom 1 Separated bedroom 1 Living-Sleepingroom



2. floor



Check-in

15:00 - 18:00 Clock



Check-out

11:00 - 13:00 Clock

Sleeping options

Sleeping room



1x Double bed (1,40 m x 2 m)



1x Extra bed

Living and sleeping



1x Sofa bed (1 person)

Descripton of accommodation

Central & Family-Friendly Apartment with Historic Charm – Right by the Danube

Beautiful, lovingly lived-in period apartment with a view of the Danube and morning sun.

Just a few steps to the river beach for swimming – and sometimes even beach volleyball right outside the front door. Free parking is available directly in front of the house.

Prime Location:

- ✓ Located on the promenade among medieval townhouses
- ✓ Peaceful and inspiring – nature and water right at your doorstep
- ✓ Free parking in front of the house
- ✓ E-charging station for bikes & cars just 200 m away
- ✓ The famous Danube Cycle Path runs right past the house

The apartment includes:

- ✓ Entrance hall with coat rack
- ✓ Separate WC
- ✓ Bathroom with bathtub & shower
- ✓ Bedroom with a large family bed (2.30 m x 2 m: 1.40 m + 0.90 m combined)
- ✓ Open-plan living/dining area with comfy sofa & fully equipped kitchen

Sleeping arrangements:

- ✓ 2 adults + 1 child in the family bed
- ✓ 1 adult on the comfortable living room sofa

Amenities:

- ✓ Wi-Fi
- ✓ Fully equipped kitchen (electric stove, coffee machine, toaster, dishes, cutlery, glasses, etc.)
- ✓ 2 drying racks
- ✓ Safe indoor space to store bicycles
- ✓ Art supplies & toys for kids

Equipment & Features



Basic equipment

- Internet/Wifi
- Private washing machine
- Towels
- Parking on the road without time limit without any cost
- Iron & ironing board
- Printer
- Bedclothes
- Private toilet
- Vacuum cleaner
- Cleaning utensils



First supply

- Toilet paper
- Soap
- shampoo
- Fridge filling on request



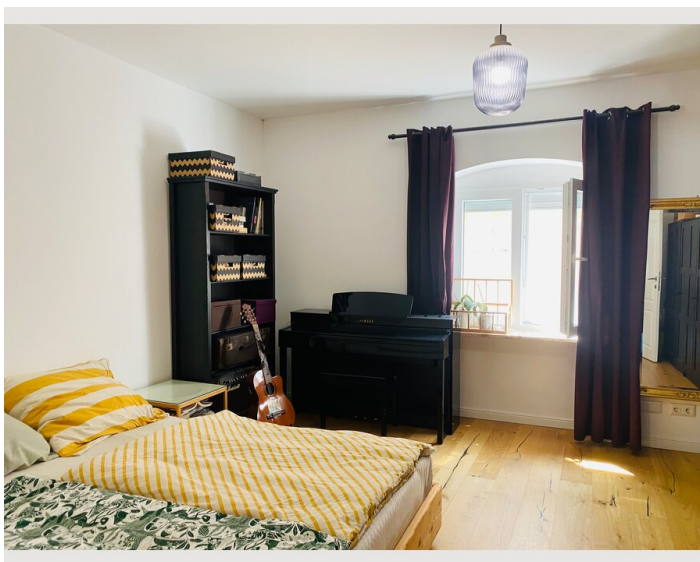
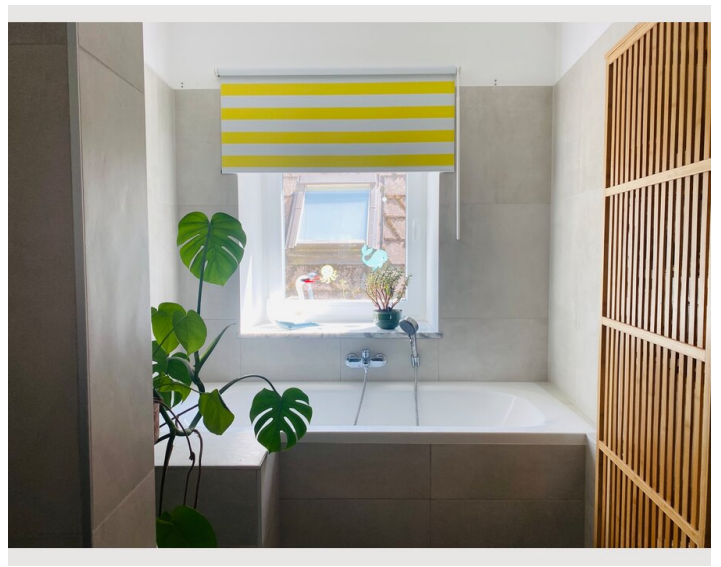
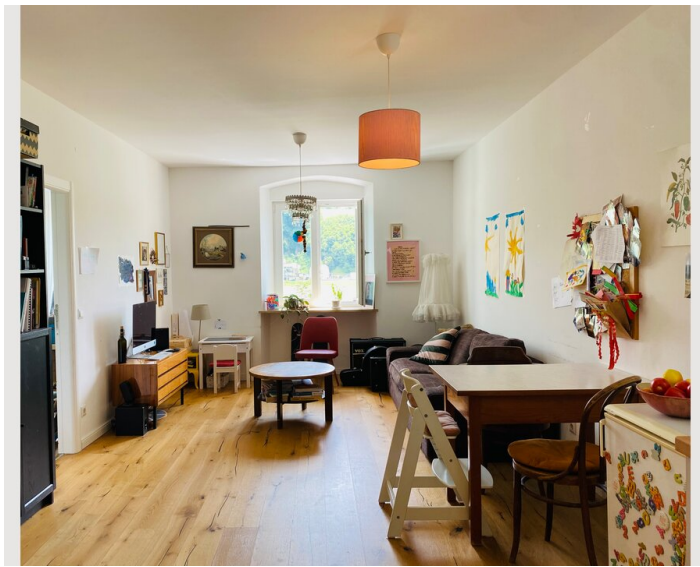
Kitchen

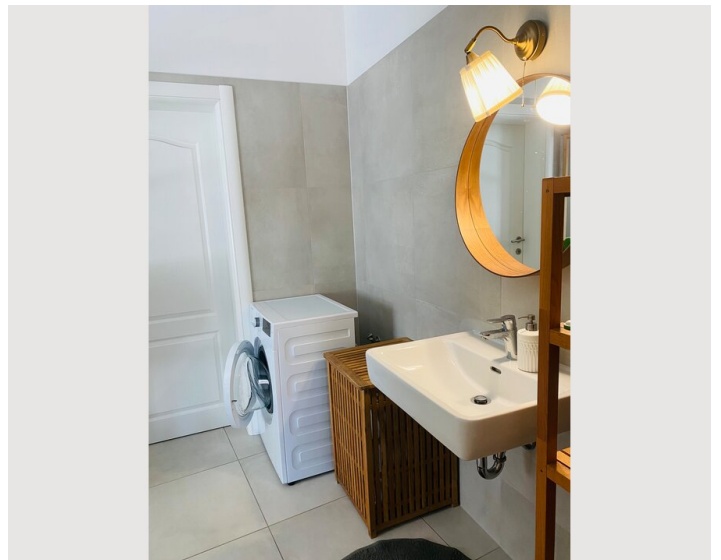
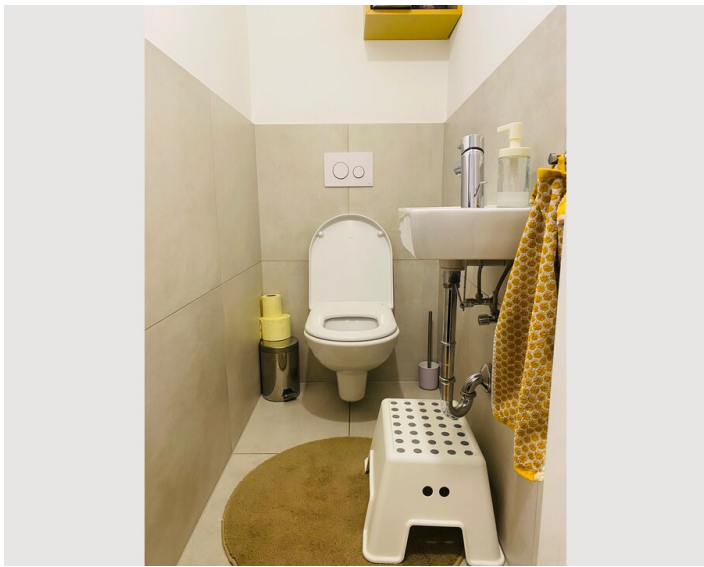
- Private kitchen
- Glasses/Tableware
- Dishwasher
- Cooking utensils
- Coffee machine

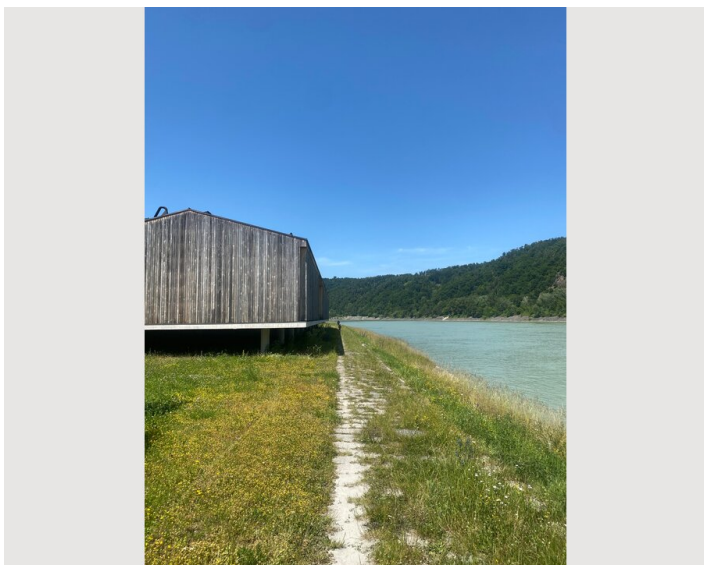
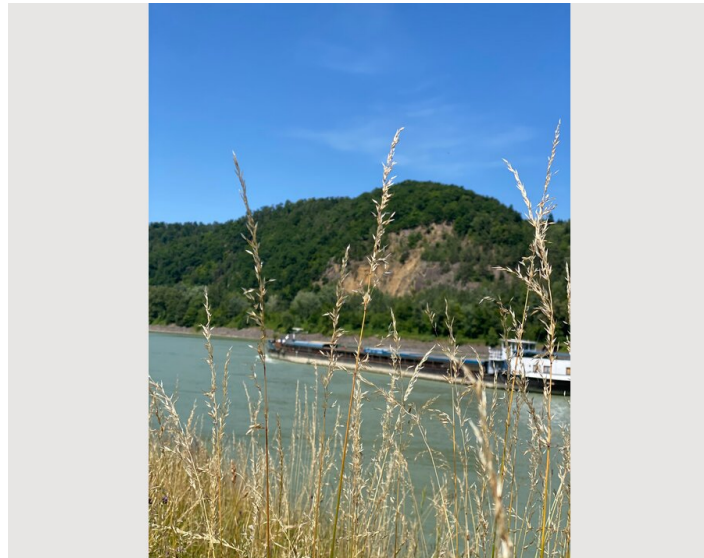
Informations

- Suitable for construction workers
- Smoking not allowed
- Desk/Workplace
- Pets on request
- Bicycle room free of charge
- Suitable for children
- Free short-term parking zone
- Private entrance
- Regular cleaning at extra cost

Picture gallery







Infrastructure

✓ Bus stop just 250 m away ✓ Regular (half-)hourly connections to Linz and back ✓ Also direct connections in the other direction (e.g. to Wels and beyond)

© The apartment is right in the heart of the village center

🛒 A supermarket is within easy walking distance (700 m)

The apartment is located directly on the popular Danube Cycle Path – one of the most famous long-distance cycling routes in Europe.

Feeling adventurous? You can theoretically cycle all the way to the Black Sea – a total of 2,850 km along the Danube!

Right on your doorstep:

- ✓ Long river beach with swimming access
- ✓ Plenty of free parking
- ✓ Local restaurants, cafés & bars in the historic town center

Food & drink recommendations just around the corner:

- Café Red Berlin – artist hangout & jazz bar
- Santa Lucia – popular Italian restaurant
- Traditional Austrian inns
- Turkish & Thai
- Several cozy cafés & ice cream

For daily needs:

- ✓ Spar supermarket (700 m)
- ✓ Stockfish snack stand (900 m)
- ✓ Pharmacy, newsstand, discount store & gas station (1.5 km)
- ✓ Additional shops & a drugstore (2 km)

Culture & local highlights:

- Die Tischlerei: riverside cultural center with concerts, exhibitions & cabarets
- Guided night watchman tour through historic Aschach (once per month)
- Farmers' market with live music on the last Saturday of each month
- Local artists' studios
- Schloss Aschach (a Renaissance castle right on the Danube – cultural events & exhibitions in the historic arcaded courtyard)
- Fishermen and Boatbuilders Museum – Discover Aschach's rich history of boatbuilding, a craft practiced here for centuries until the 1970s.
- River cruise dock just 700 m away – enjoy scenic boat trips between Passau and Linz (donauschiffahrt.eu/passau-linz)

Unique small shops:

- Eigenart – handmade regional arts & crafts
- Herzenfroh – fabrics, sewing supplies & creative goods
- Anglershop – Find rods, bait, tackle & more – perfect for a relaxing day by the rivers (Danube, Aschach, Mühl, Pesenbach, Rodl, etc.)

Leisure & nearby attractions:

- Faustbeach (across the river): beach area with bar
- 5 large bathing lakes + 1 child-friendly lake in the neighboring village (approx. 5–10 min by car)
- Local restaurants, wine taverns (Mostheurige) & a spacious golf course in the area

Aschach - Linz by car - 20 min

Aschach - Linz by bus - 50 min

Aschach - Linz by bike - 75 min

Location

