



2 ROOM APARTMENT, 1050 VIENNA

1,5 Rooms in 2_person Flat 1050; bright, central and fully furnished

Object number: KLAY4

[View and rent online](#)

Period	21/12/2025 - 21/01/2026
Number of persons	2
Total incl. VAT.	€ 1.213,55
Security deposit	€ 900,00

Large, bright, clean and quiet apartment in an old building. Fully equipped and in a top location. The apartment is shared with me, I am usually not at home during the day and in the evening I am in the climbing gym, bar or in bed with a book.



Living space

23m²



Maximum occupancy

2 Persons



Shared Accommodation [?]

1 Shared bathroom 2 Shared bedrooms



1. floor

Elevator available



Check-in

10:00 - 15:00 Clock



Check-out

08:00 - 12:00 Clock

Sleeping options

Living and sleeping 1



1x Double bed (1,60 m x 2 m)



1x Sofa bed (2 persons)

Living and sleeping 2

Descripton of accommodation

The apartment is located in the immediate vicinity of the subway stations Pilgramgasse and Kettenbrückengasse (U4). Naschmarkt, Mariahilferstraße and the first district are within walking distance. The clean, quiet and bright apartment in an old building has a beautiful view of the green inner courtyard. There is sun all day long and it is quiet at night. The eat-in kitchen is equipped with an induction stove, oven, dishwasher, blender, coffee machines of all kinds and everything else you need for cooking and eating. The bathroom is very large and furnished with a waterfall shower and washing machine. In the room there is a large desk (with monitor if required), a comfortable 160 cm bed and very comfortable armchairs for reading. The whole apartment has been lovingly furnished and is shared with me (Georg). If required, there is a bicycle storage facility in the courtyard and a bicycle can also be borrowed.

Equipment & Features



Basic equipment

- Internet/Wifi
- Printer
- Bedclothes
- Private toilet
- Iron & ironing board
- Hairdryer
- Music system/docking station
- Community washing machine
- Towels
- Vacuum cleaner
- Cleaning utensils



First supply

- Toilet paper
- Soap
- shampoo
- Nespresso capsules



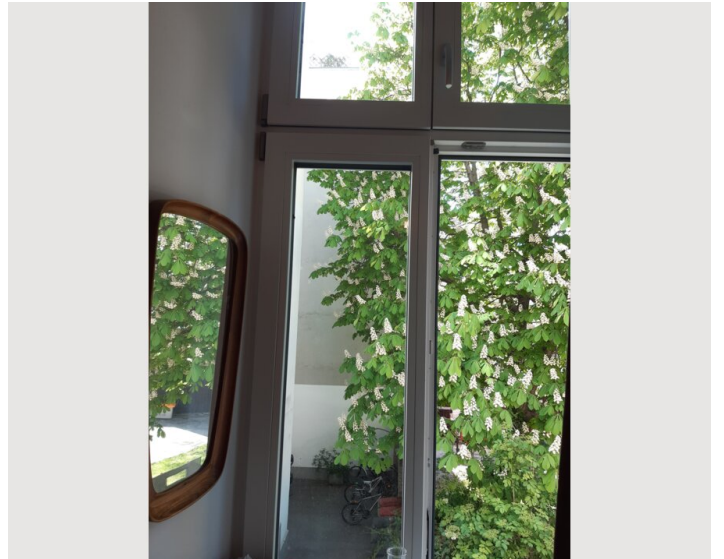
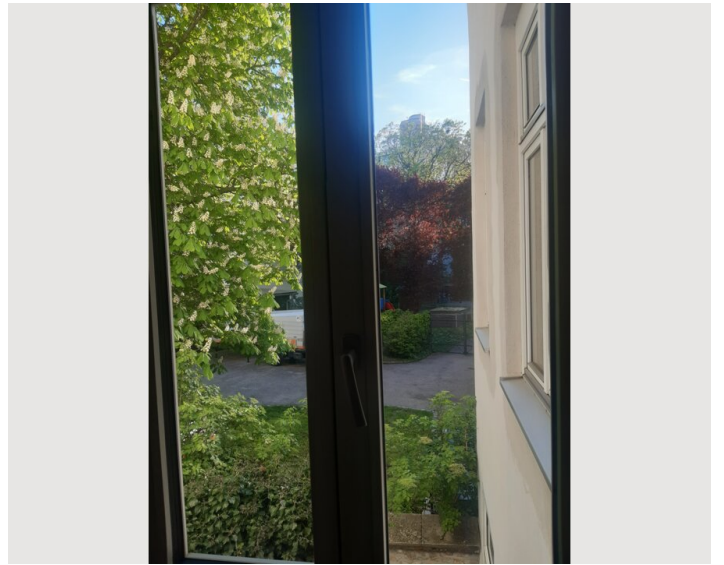
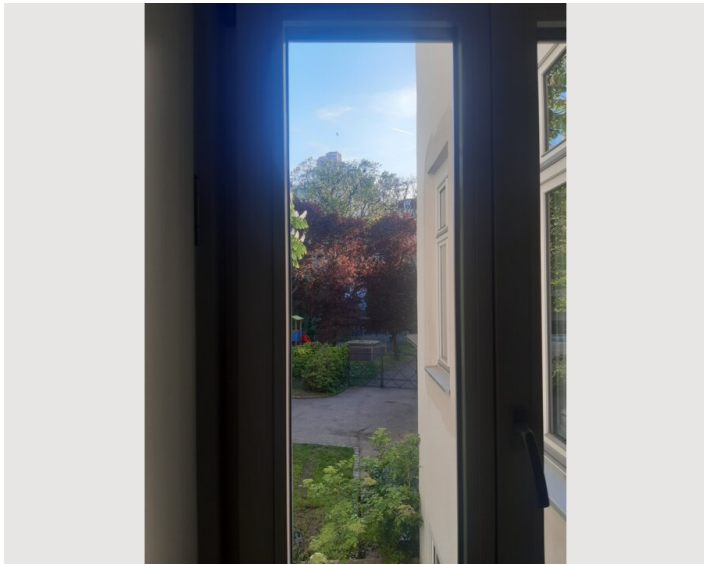
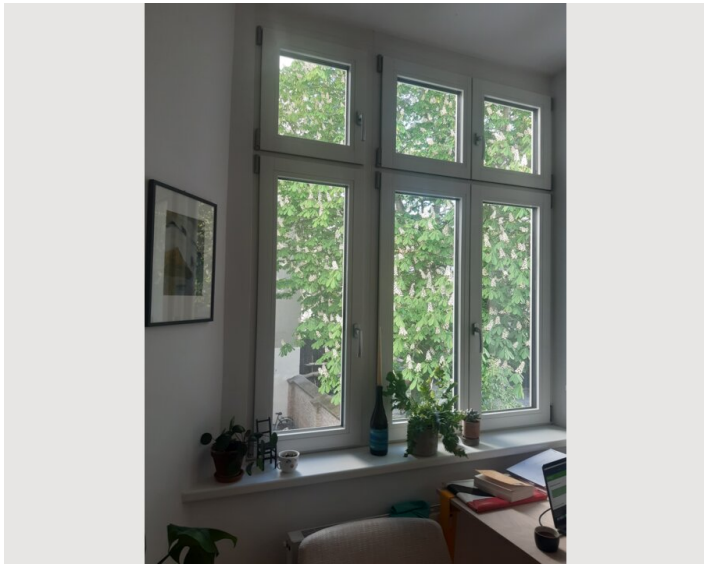
Kitchen

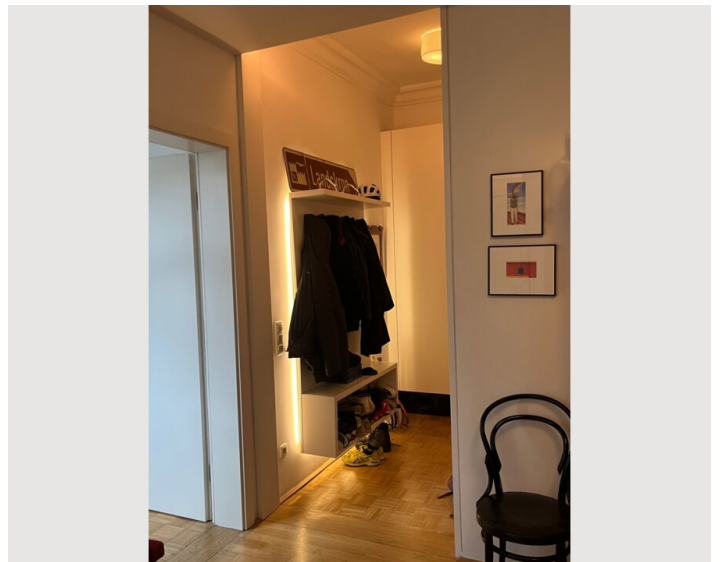
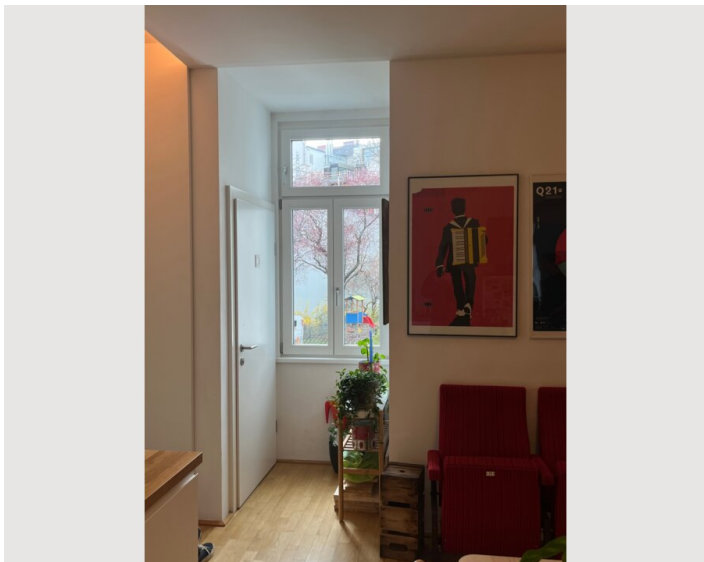
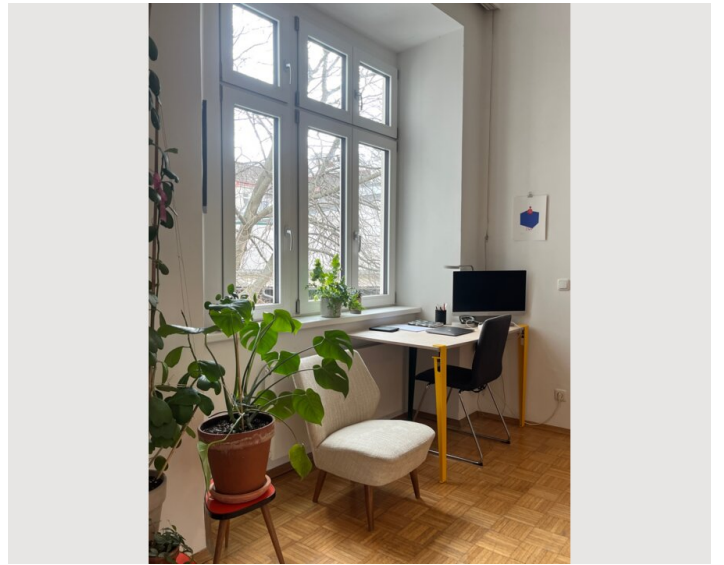
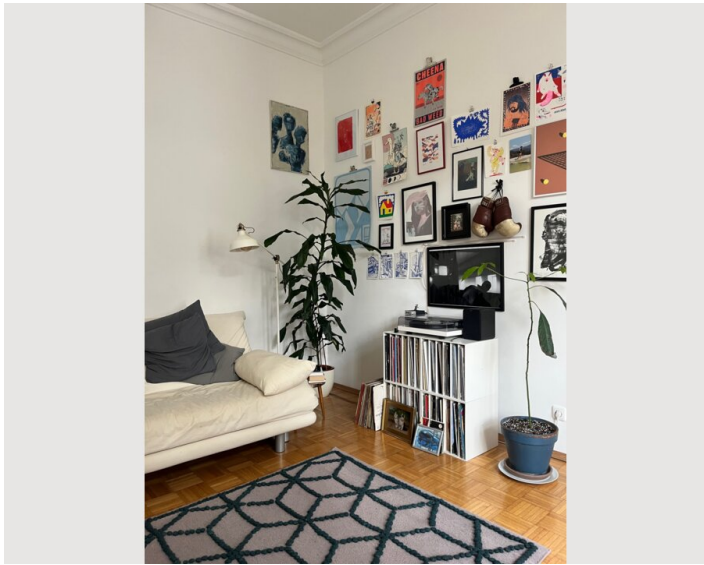
- Shared kitchen
- Glasses/Tableware
- Filter coffee
- Steam cooker
- Cooking utensils
- Espresso machine
- Dishwasher

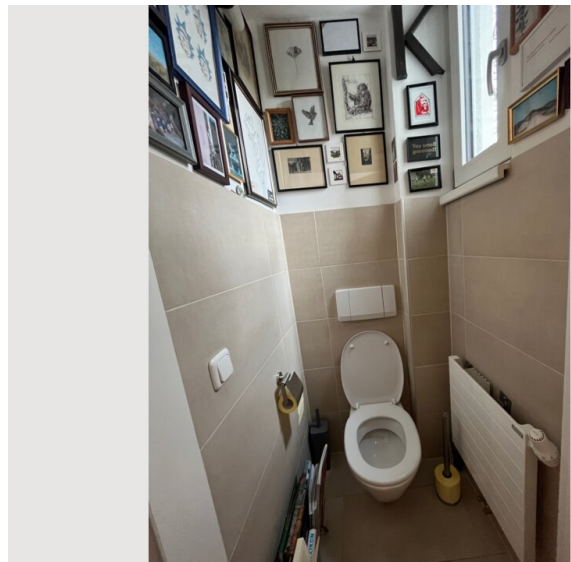
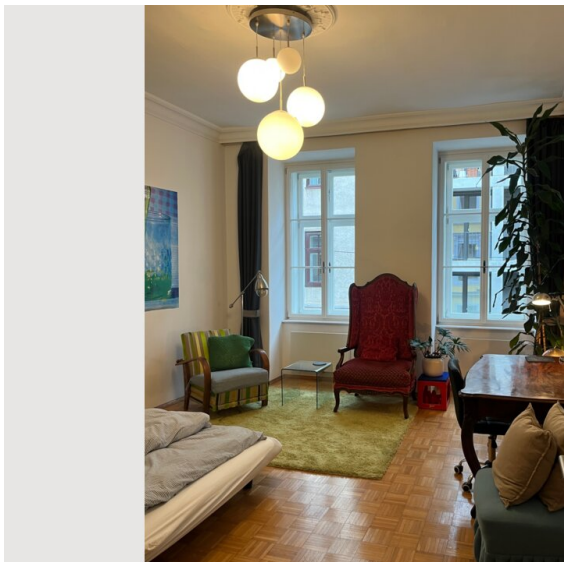
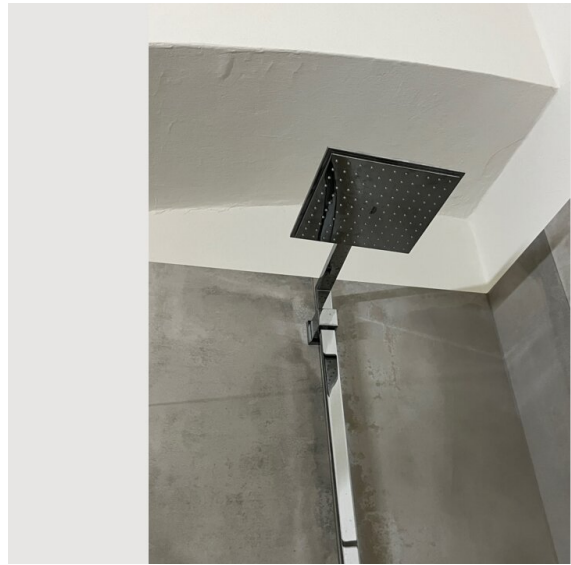
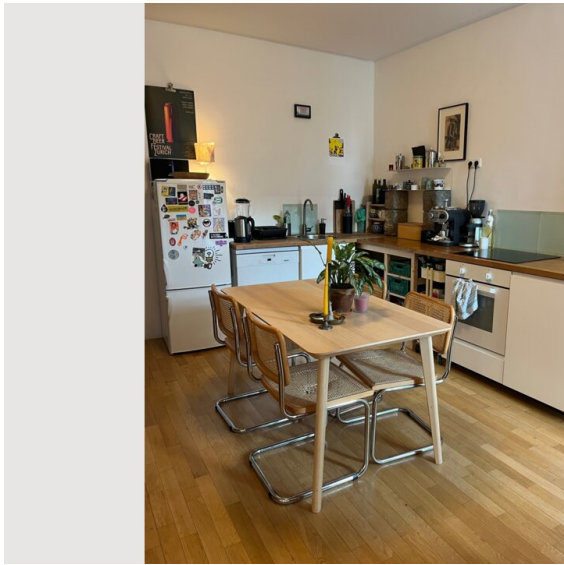
Informations

- Suitable for construction workers
- Smoking allowed
- Short-term parking zone subject to a charge
- Pets on request
- Not suitable for children
- Smoking not allowed
- Desk/Workplace
- Regular cleaning at extra cost




Picture gallery







Infrastructure

- | | |
|---|---|
|  13A, 12A, 14A, 59A |  Mariahilferstrasse (shopping): 10 min walk |
|  U4 Pilgramgasse, Kettenbrückengasse |  1st district: 20 min walk, 5 min U Bahn |
|  10 min Subway ride (Meidling and Hbf) |  5 min Billa, Spar, Hofer, Asia shop, Bäcker; "Nasch"-market |

U4 Kettenbrückengasse and Pilgramgasse, 13A, 14A in 5 minutes on foot. Billa, Spar in 5 min, Hofer in 10 min. Naschmarkt 5 min, Mariahilferstrasse 10 min, First District 20 min. Many restaurants, bars, stores in the immediate vicinity.

Location

