



2 ROOM APARTMENT, 1050 VIENNA

Grüngasse

Object number: CHNM1

[View and rent online](#)

Quiet, bright apartment, max. 2 persons, approx. 43 m², ideal room layout, storage space, view of green courtyard, attractive location: good local amenities and transport connections near the Naschmarkt, approx. 15 minutes walk to the city center.

Period	28/06/ - 28/07/2026
Number of persons	2
Total incl. VAT.	€ 1.747,58
Security deposit	€ 1.300,00



Living space

43m²



Maximum occupancy

2 Persons



Complete accommodation [?]

1 Private bathroom 1 Separated bedroom



2. floor

Elevator available



Check-in

09:00 - 19:00 Clock



Check-out

09:00 - 19:00 Clock

Sleeping options

Sleeping room



1x Double bed (1,80 m x 2 m)

Description of accommodation

- Quiet, southwest-facing, bright apartment for max. 2 persons,
- Approx. 43 m² with ideal room layout and plenty of storage space (fitted wardrobe and storage room)
- Situated in the 2nd floor (elevator) of an old beautiful building and viewing towards a green courtyard.
- Attractive area with good local amenities and transport links (U4, 12A, 13A, 14A, 59A each 300m away)
- close to hotspot Naschmarkt and shopping mile Mariahilfer Straße, about 15 minutes-walk to the city center.
- Home-Office-suited as WIFI-speed is fast and allows smooth video-calls. Monitor available to be connected to notebooks.

Equipment & Features



Basic equipment

- Garden sharing
- Private washing machine
- Towels
- Vacuum cleaner
- Cleaning utensils
- Internet/Wifi
- Bedclothes
- Private toilet
- Iron & ironing board
- Hairdryer



First supply

- Toilet paper



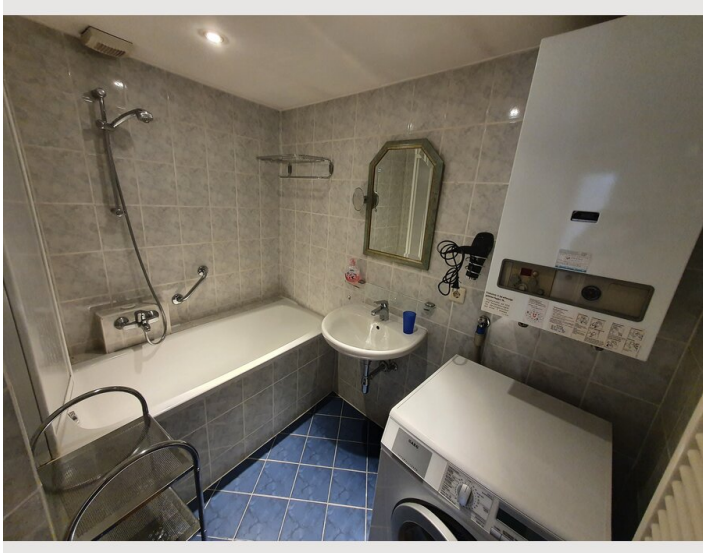
Kitchen

- Private kitchen
- Glasses/Tableware
- Microwave
- Cooking utensils
- Espresso machine
- Steam cooker

Informations

- Not suitable for children
- Short-term parking zone subject to a charge
- Private entrance
- Regular cleaning at extra cost
- Smoking not allowed
- Desk/Workplace
- Pets forbidden

Picture gallery



Infrastructure

🕒 15 minutes walk or metro U4

🚊 metro line U4 and bus lines 12A, 13A, 14A, 59A each less than 300m away

🏪 supermarket, drugstore, pharmacy, post office, bank within 2 blocks

Close to the Naschmarkt (countless restaurants and grocers) and the Mariahilfer Straße shopping street, approx. 15 minutes walk to the city center. Good local amenities (with supermarket, drugstore, pharmacy, post office, bank within 2 blocks) and transport connections (U4, 12A, 13A, 14A, 59A each less than 300m away).

Location

