

2 ROOM APARTMENT, 10997 BERLIN

## sunny and quiet flat close to metro station Schlesisches Tor

Object number: LQQI1

[View and rent online](#)

spacious, sunny flat in a quiet house with friendly and quiet neighbors, ready for new tenants

<b>Period</b>	19/12/2025 - 19/01/2026
<b>Number of persons</b>	2
<b>Total</b> incl. VAT.	€ 1.888,86
Security deposit	€ 1.500,00



### Living space

65m²



### Maximum occupancy

2 Persons



### Complete accommodation <sup>?</sup>

1 Bathroom at the corridor 1 Separated bedroom



### Ground floor



### Check-in

00:00 - 00:00 Clock



### Check-out

00:00 - 00:00 Clock

## Sleeping options

### Sleeping room



1x Double bed (1,40 m x 2 m)



1x Sofa bed (2 persons)

## Description of accommodation

the apartment is just 3 walking minutes away from the metro station Schlesisches Tor. Outside, you will find many restaurants, bars and supermarkets, typical Berlin style. The Kiez is very lovely and open minded and you can enjoy this friendly area of Kreuzberg. Since the flat is located in the siding of the house and there is no house behind, the apartment is very quiet and bright. The neighbors are friendly and quiet. Everything you need is already there, stable internet, fully furnished kitchen, towels, fully ready for new tenants

### Equipment & Features



#### Basic equipment

- Internet/Wifi
- Private washing machine
- Towels
- Vacuum cleaner
- Cleaning utensils
- TV
- Bedclothes
- Private toilet
- Iron & ironing board
- Hairdryer



#### First supply

- Toilet paper
- Soap
- shampoo



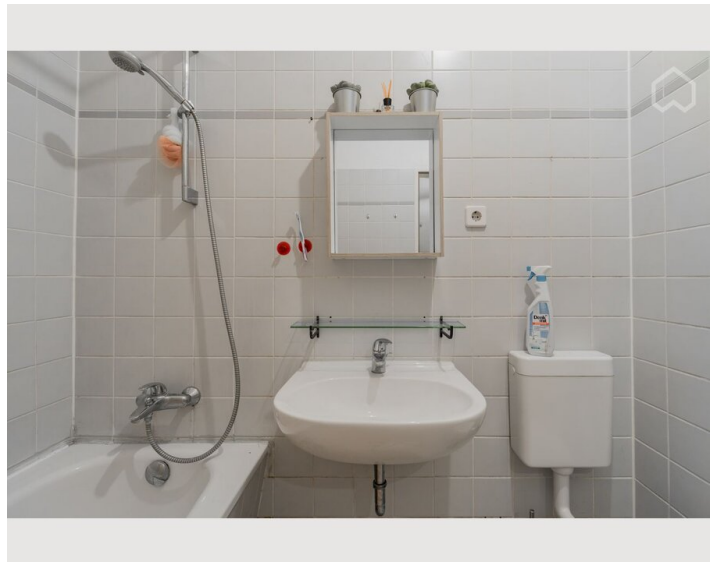
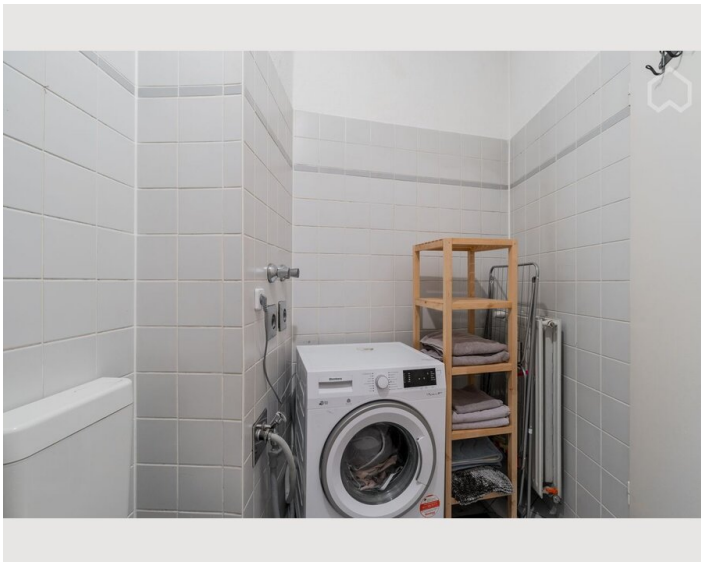
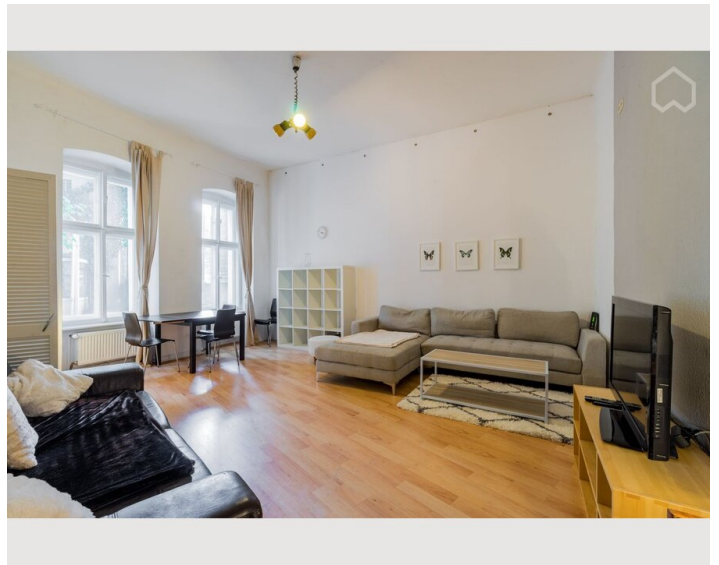
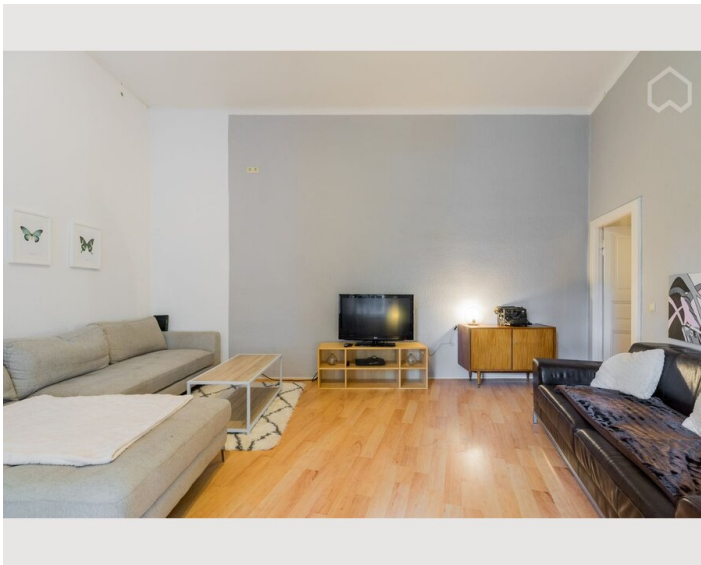
#### Kitchen

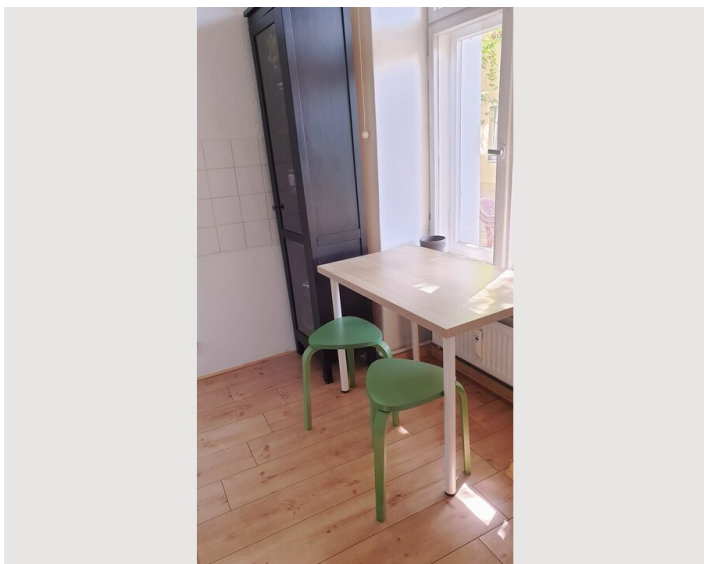
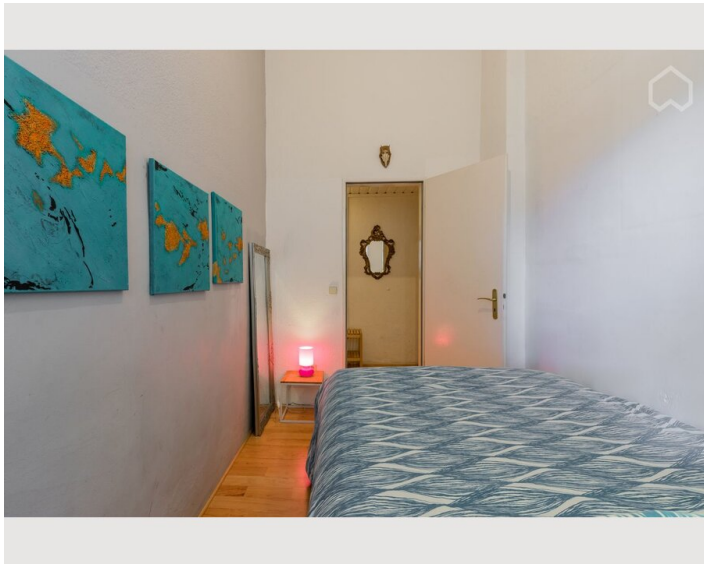
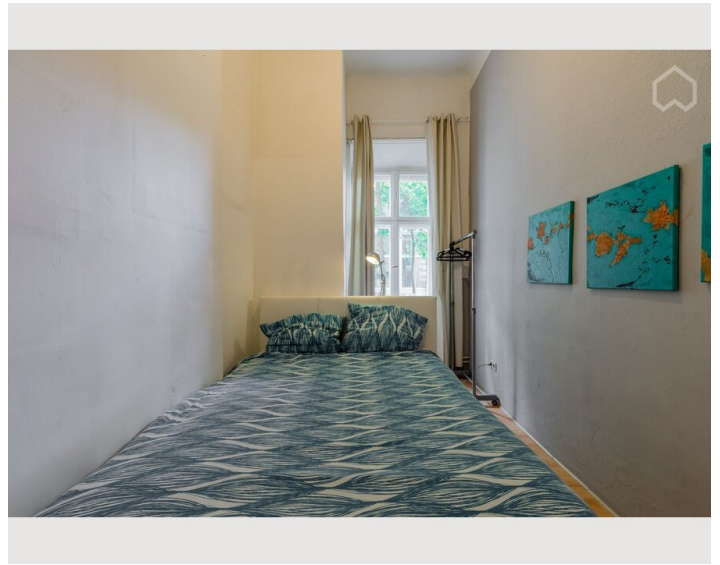
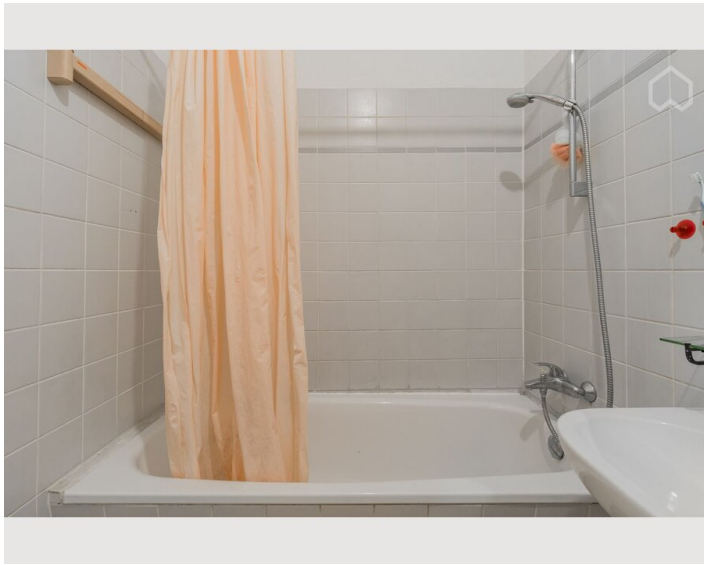
- Private kitchen
- Glasses/Tableware
- Cooking utensils
- Microwave

## Informations

- Not suitable for children
- Private entrance
- Bicycle room free of charge
- Desk/Workplace
- Pets on request

## Picture gallery







## Infrastructure



Lidl & DM 3 walking minutes

Metro and Bus station 3 walking minutes

Alexanderplatz 15 minutes with public transport

restaurant and little shops are located in the main street on the other side of the house

## Location

