

STUDIO APARTMENT, 1220 VIENNA

Lofty big apartment

Object number: BARE2

[View and rent online](#)

Period	14/12/2025 - 14/01/2026
Number of persons	2
Total incl. VAT.	€ 1.767,03
Security deposit	€ 1.300,00



Living space

115m²



Maximum occupancy

6 Persons



Complete accommodation [?]

1 Private bathroom 1 Living-Sleepingroom



Ground floor

Sleeping options

Living and sleeping



1x Single bed



2x Sofa bed (2 persons)

Description of accommodation

The beautiful 115 square meter apartment is fully furnished with a large window front facing and access to the garden. It consists of an open 13m long room separated by 2 steps of kitchen and an office area with juvenile couch. The apartment can accommodate 4 adults and 2-3 children. There are toys for the little ones and leisure activities for the grown-ups include a pool table in the room and a ping-pong table in the garden.

The apartment is open but separated by 2 steps. Upstairs are an office / living area, laundry area (washing machine, towels) kitchen with ceramic hob (cooking and eating utensils), dishwasher and a bar. There is a storage room with ice chest.

After the 2 steps is a 13m long room with a large window front and a patio door to the garden.

Guests use the entire condominium and garden. There is also a storage room for 2 bicycles and a private parking space in front of the garden.

An initial conversation with tips about restaurants etc. nearby. There is a welcome pack with a small special guide.

I am your contact person if there are problems, where I can help you.

Feel better than at home in our accommodation. We look forward to you.

Description about the environment:

Right next to it is a riding stable and the Lobau (National Park Donauauen) for horseback riding, walking, bathing and cycling. As a shopping opportunity that offers 5 minutes.

There are bike paths are right outside the door and lead to the city center.

With buses (26A, 88A) which are in front of the door, you are in 10 minutes at the U2 Aspernstrasse or Seestadt, where there is also a swimming pond.

Equipment & Features



Basic equipment

- Garden
- Private toilet
- Towels
- Hairdryer
- Private parking space
- Community washing machine
- Bedclothes
- Parking space



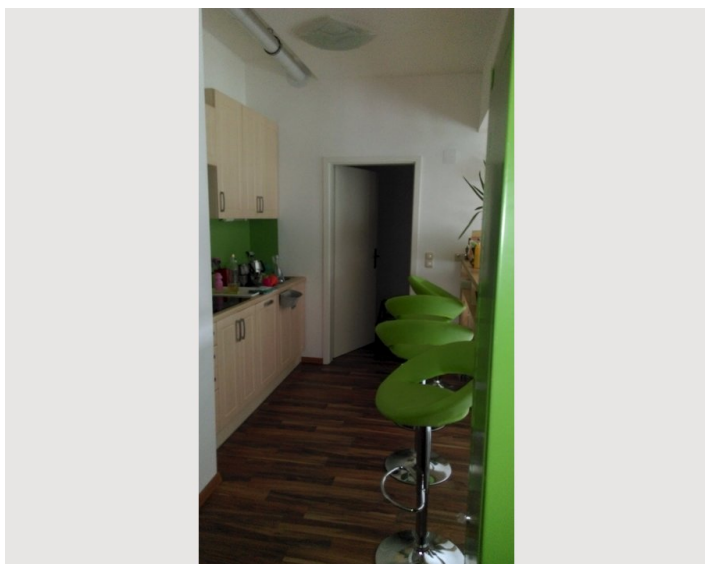
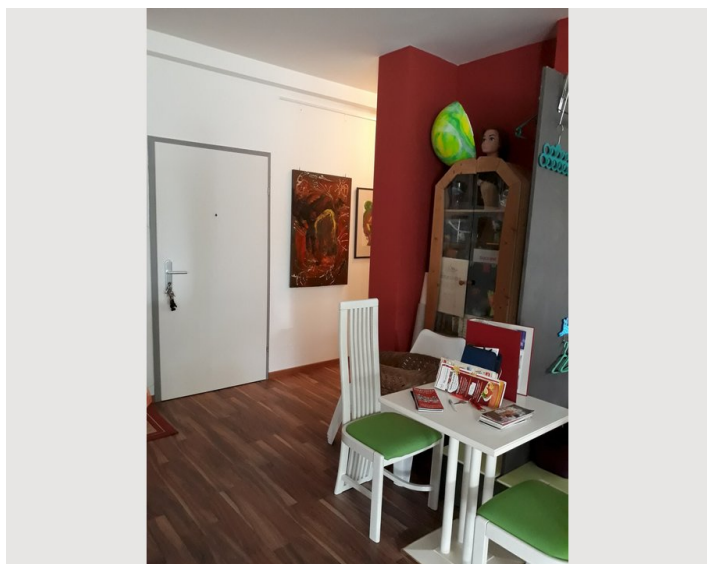
Kitchen

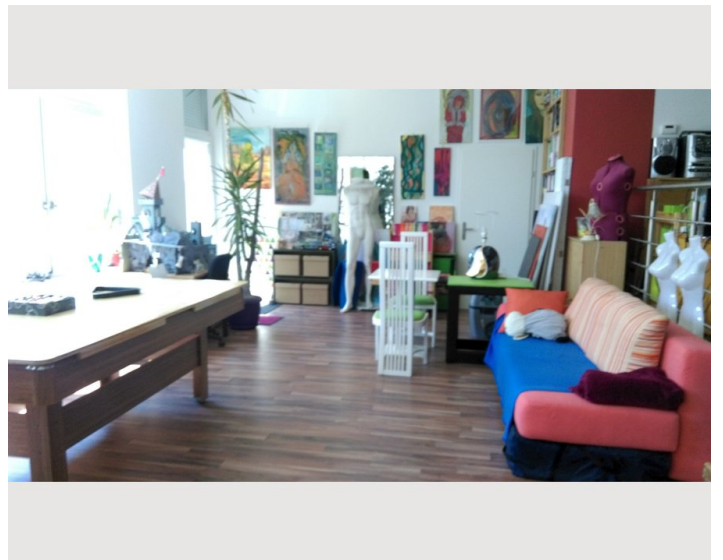
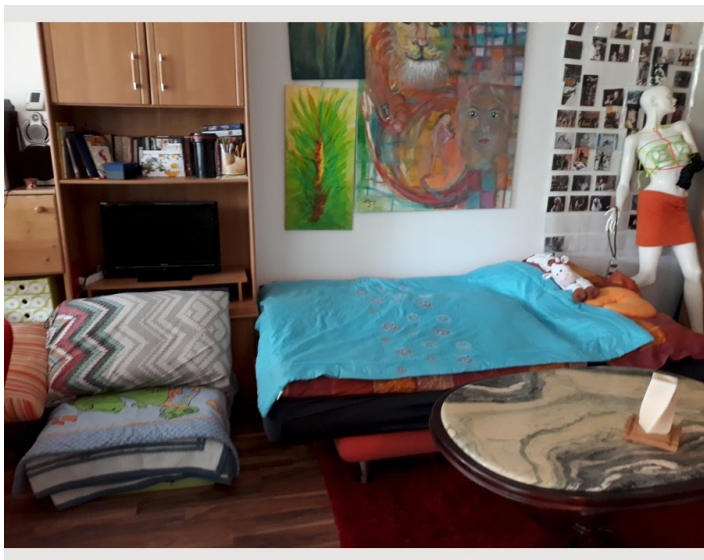
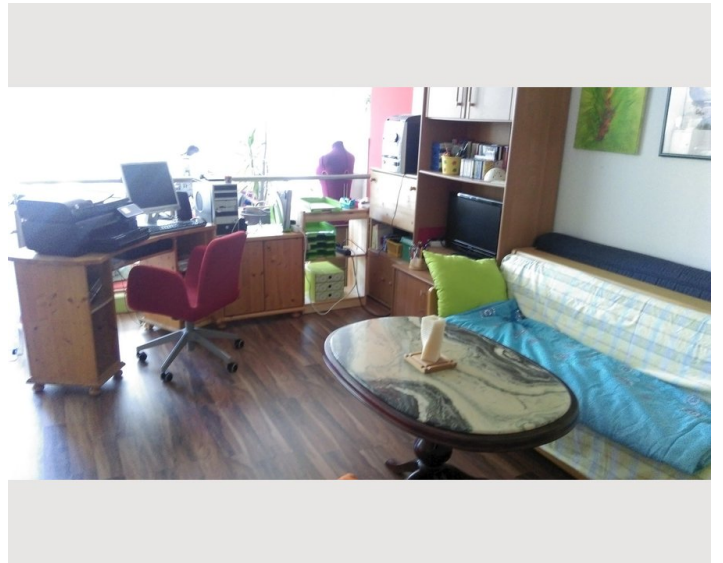
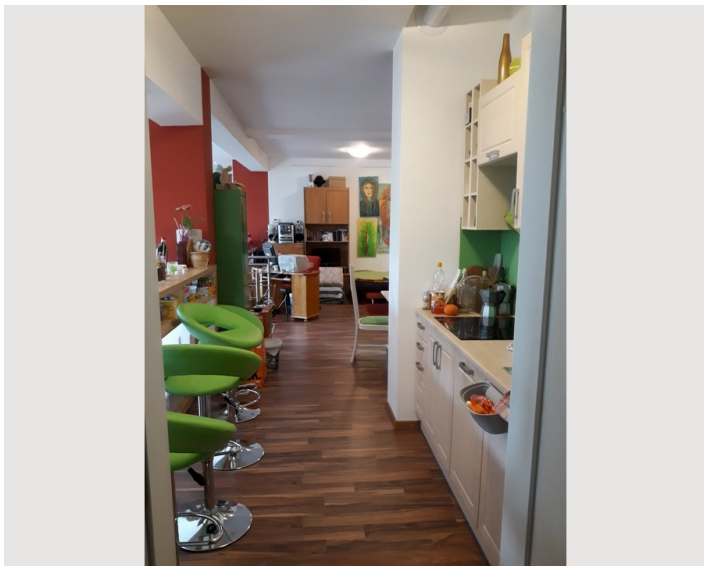
- Private kitchen
- Coffee machine
- Dishwasher
- Glasses/Tableware

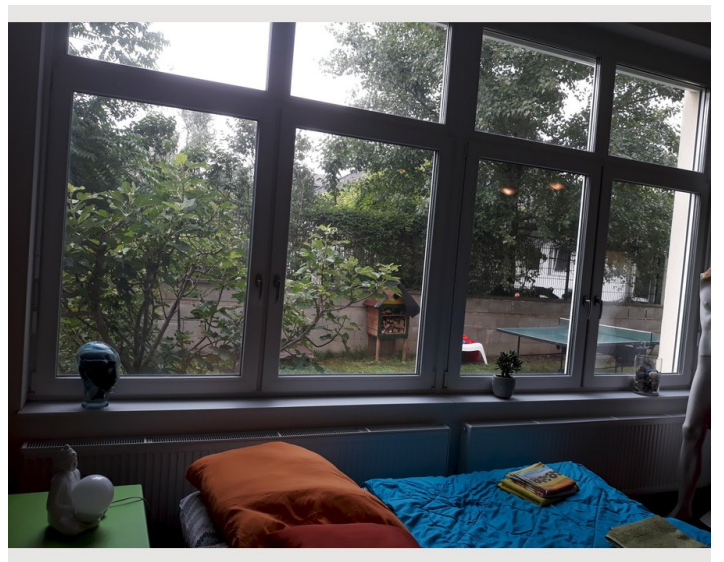
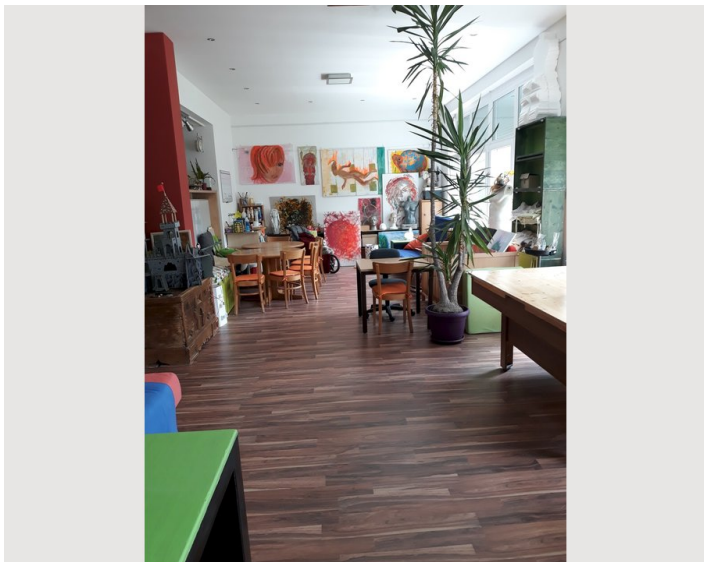
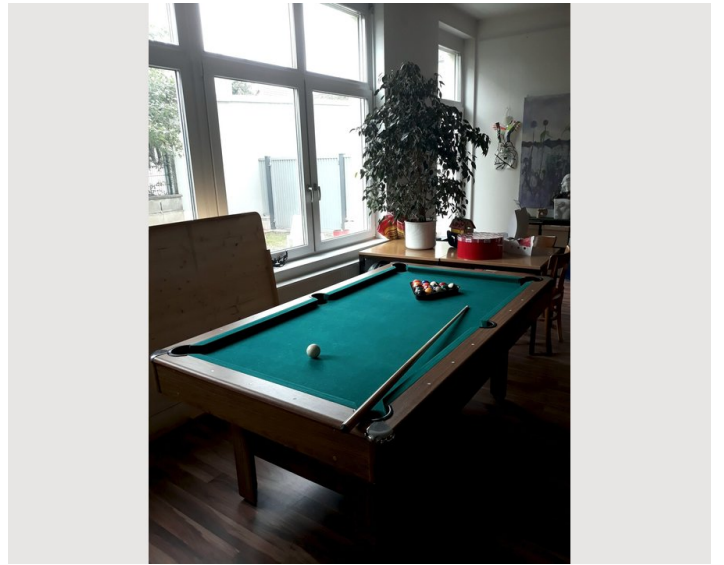
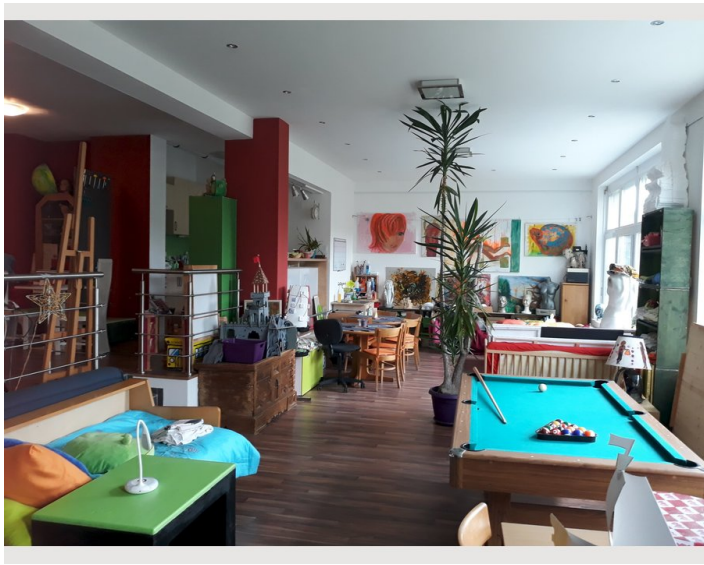
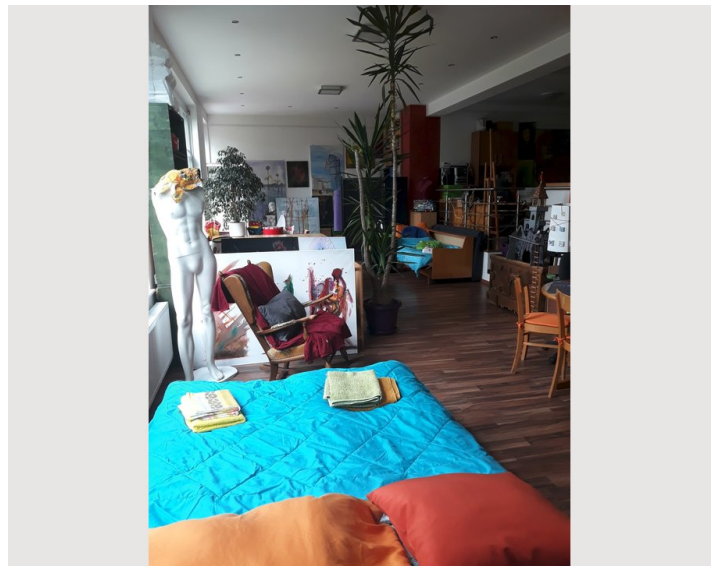
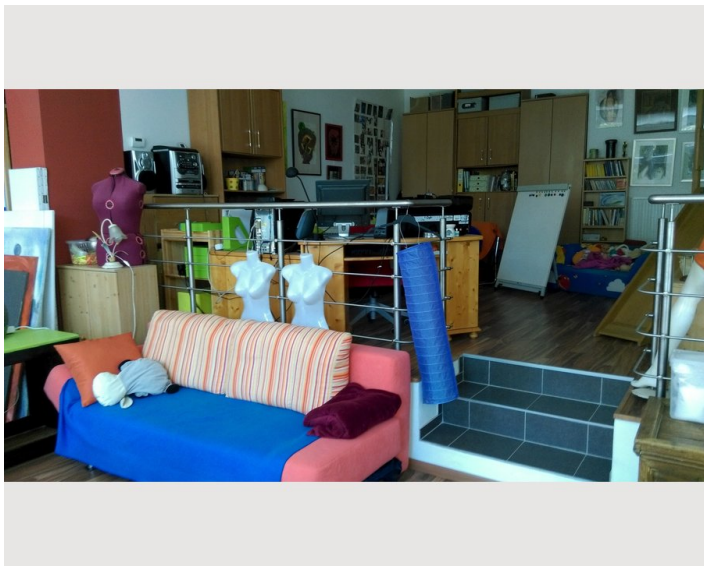
Informations

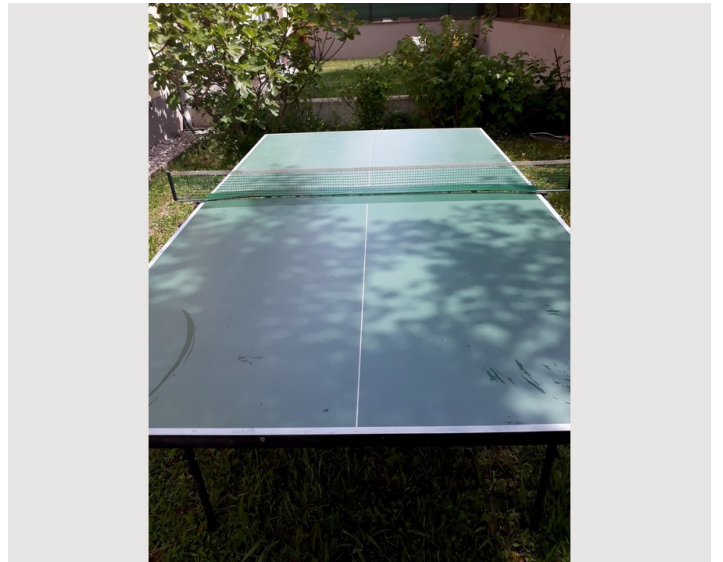
- Smoking not allowed

Picture gallery









Location

