



STUDIO APARTMENT, 1200 VIENNA

Moni1

Object number: LWRS1

[View and rent online](#)

The apartment has a loft bed, a separate kitchenette, and a large bathroom with a separate toilet. All utensils are provided.

Period	10/12/2025 - 10/01/2026
Number of persons	2
Total incl. VAT.	€ 1.459,24
Security deposit	€ 1.000,00



Living space

30m²



Maximum occupancy

2 Persons



Complete accommodation [?]

1 Private bathroom 1 Living-Sleepingroom



1. floor

Elevator available



Check-in

07:00 - 18:55 Clock



Check-out

07:00 - 19:00 Clock

Sleeping options

Living and sleeping



1x Double bed (1,60 m x 2 m)



1x Bunk bed

Descripton of accommodation

This beautiful apartment for up to 2 people is in an ideal residential area of Vienna with perfect connections to the city center. It features a combined bedroom with a double bed and a living room with a couch.

The apartment is fully equipped, including a fully equipped kitchen with a washing machine and dishwasher, offering everything you need for longer stays.

The apartment is located in Vienna's 20th district with excellent public transport connections to various locations. The U6 subway line is just a 5-minute walk away, and the U4 line is only 10 minutes away. Several tram lines 31, 33, and 5 lead directly to the city center. Bus line 5b takes you directly to the Prater!

Enjoy the numerous restaurants in the area – supermarkets and shops are within walking distance. The Hannovermarkt is nearby, where you can stock up on fresh fruit and vegetables daily. Directly in front of the building is Adriano, the best pizzeria, and an ice cream shop.

Just a few minutes away from the apartment is the Augarten, which invites you to chill or run, as well as the Danube Canal. At Wallensteinplatz, you'll find the Café Vindobona, which offers a delicious breakfast with many variations.

Equipment & Features



Basic equipment

- Internet/Wifi
- Bedclothes
- Private toilet
- Iron & ironing board
- Hairdryer
- Private washing machine
- Towels
- Vacuum cleaner
- Cleaning utensils



First supply

- Toilet paper



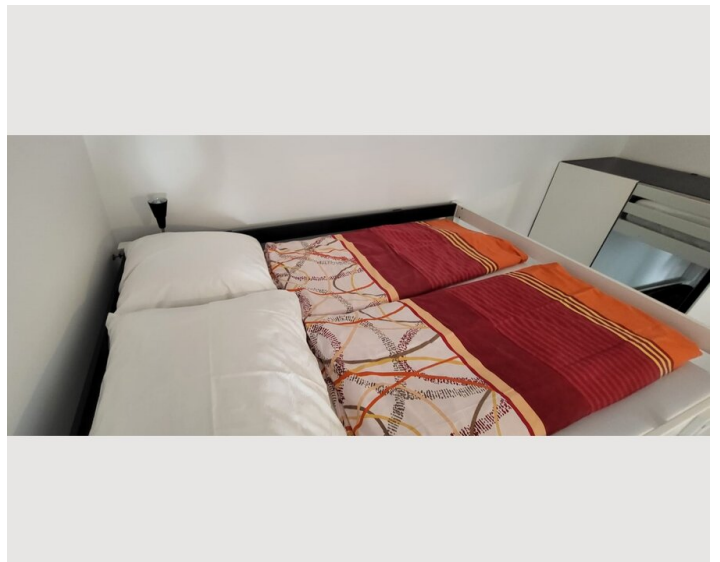
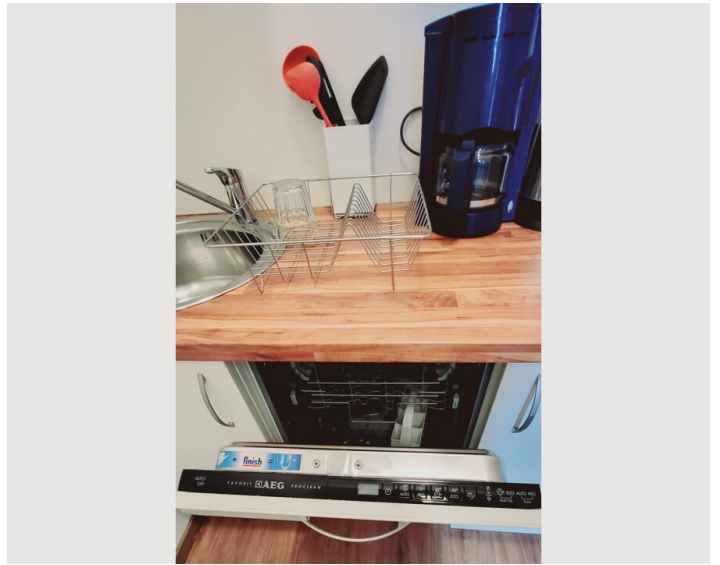
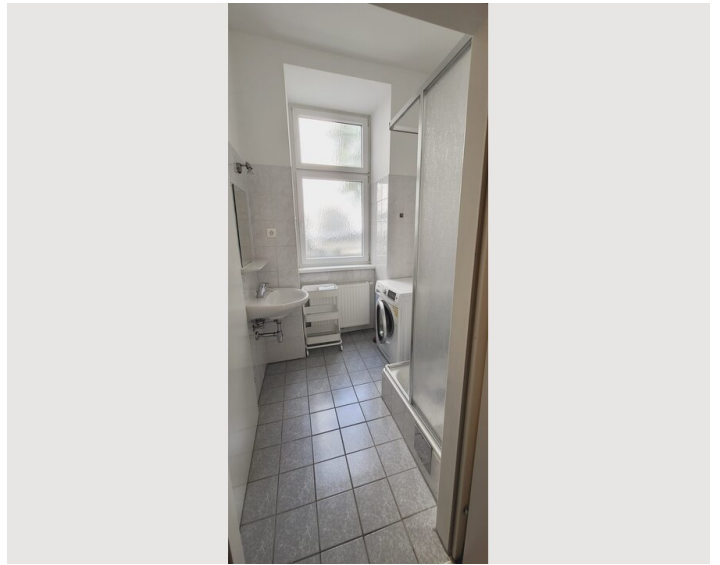
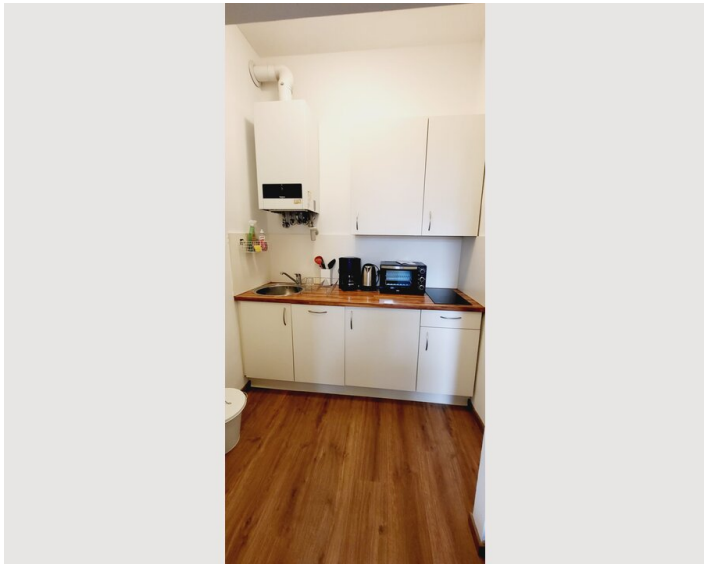
Kitchen

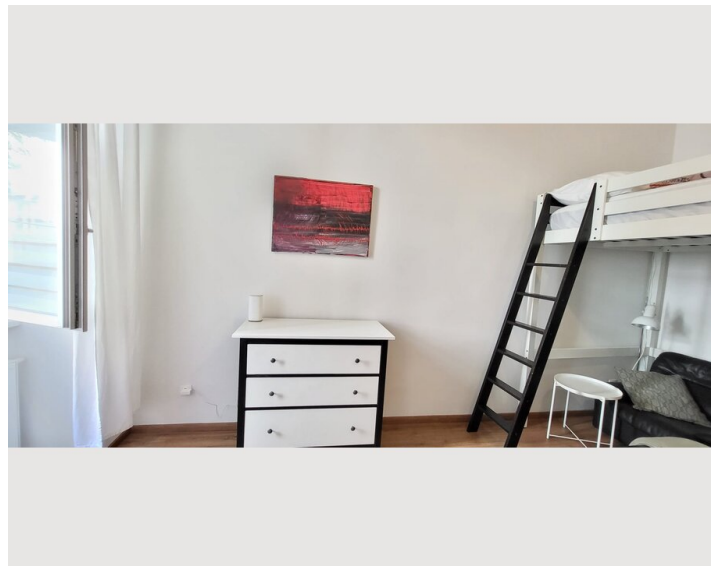
- Private kitchen
- Glasses/Tableware
- Dishwasher
- Cooking utensils
- Filter coffee
- Microwave

Informations

- Suitable for construction workers
- Short-term parking zone subject to a charge
- Regular cleaning at extra cost
- Smoking not allowed
- Pets on request

Picture gallery





Infrastructure



The U6 subway line is just a 5-minute walk away, and the U4 line is just 10 minutes away. Several tram lines, 31, 33, and 5, take you directly to the city center. Bus line 5b takes you directly to the Prater!

Location

