



2 ROOM APARTMENT, 9535 SCHIEFLING AM SEE

## Wörtherseeblick Apartment – Relaxation in Every Season

Object number: DAOD1

[View and rent online](#)

Cozy apartment with stunning lake views – ideal for relaxing, working remotely, or a short getaway. Quiet location, modern comfort, close to nature. A perfect stay in any season!

<b>Period</b>	21/02/ - 21/03/2026
<b>Number of persons</b>	2
<b>Total</b> incl. VAT.	€ 1.470,62
Security deposit	€ 1.100,00



### Living space

65m<sup>2</sup>



### Maximum occupancy

2 Persons



### Complete accommodation <sup>?</sup>

1 Private bathroom 1 Separated bedroom 1 Living-Sleepingroom



### 1. floor



### Check-in

14:00 - 21:00 Clock



### Check-out

07:00 - 11:00 Clock

## Sleeping options

### Sleeping room



1x Double bed (1,80 m x 2 m)

### Living & Sleeping

## Descripton of accommodation

Welcome to Danny's Wörtherseeblick – your peaceful retreat above the shores of Lake Wörthersee in the heart of Carinthia!

This light-filled, stylishly furnished apartment is the perfect choice for couples, solo travelers, or friends seeking relaxation and inspiration.

It offers a breathtaking panoramic view of the lake and surrounding mountains – best enjoyed from the dining area or the sunny terrace (my personal favorite spot!).

The apartment includes a cozy bedroom, a fully equipped open-plan kitchen, and a modern bathroom. It's quiet, comfortable, and warm – ideal for any time of the year, especially during the calm off-season months.

Whether you want to unwind, work remotely, or explore the beauty of the region – this place gives you space to breathe.

Free Wi-Fi, private parking at the house, and scenic walking trails right outside your door.  
Also available for short stays during the off-season!

## Equipment & Features



### Basic equipment

- Balcony
- Music system/docking station
- Private washing machine
- Towels
- Private parking space
- Iron & ironing board
- Internet/Wifi
- TV
- Bedclothes
- Private toilet
- Vacuum cleaner
- Hairdryer



### First supply

- Toilet paper
- Soap
- shampoo



### Kitchen

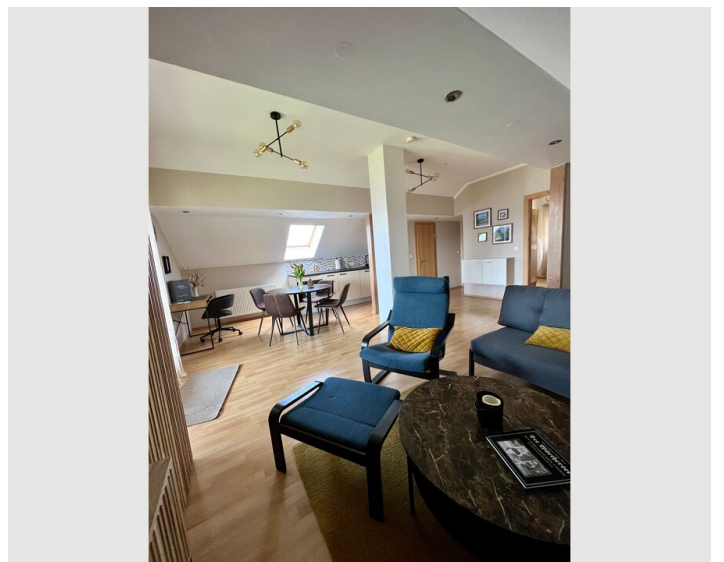
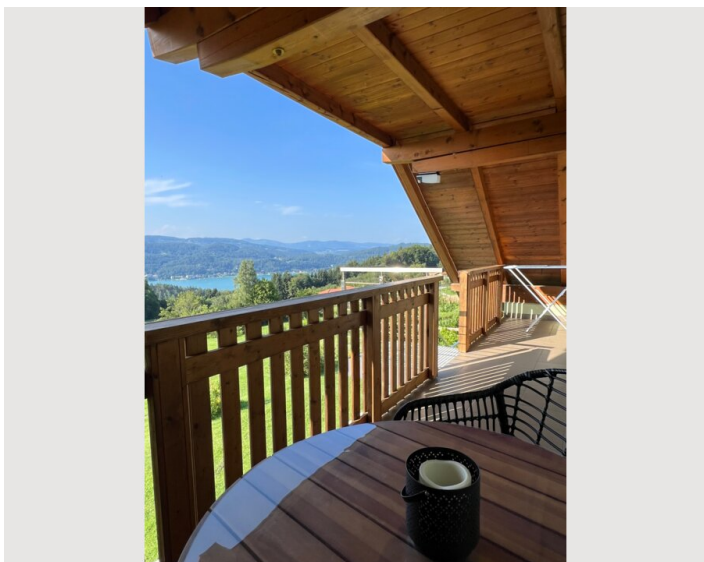
- Private kitchen
- Glasses/Tableware
- Dishwasher
- Cooking utensils
- Filter coffee
- Microwave

## Informations

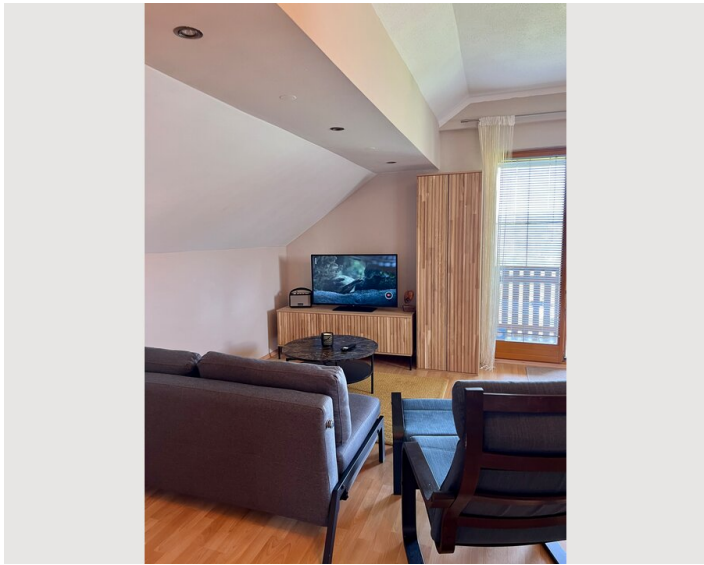
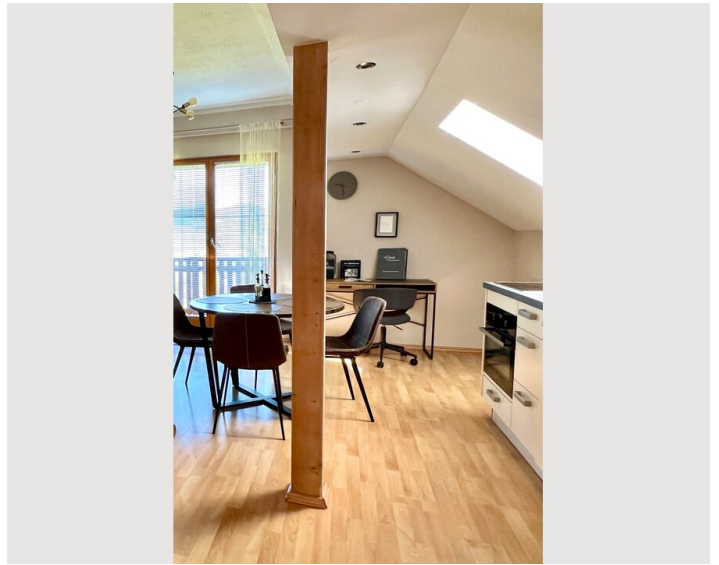
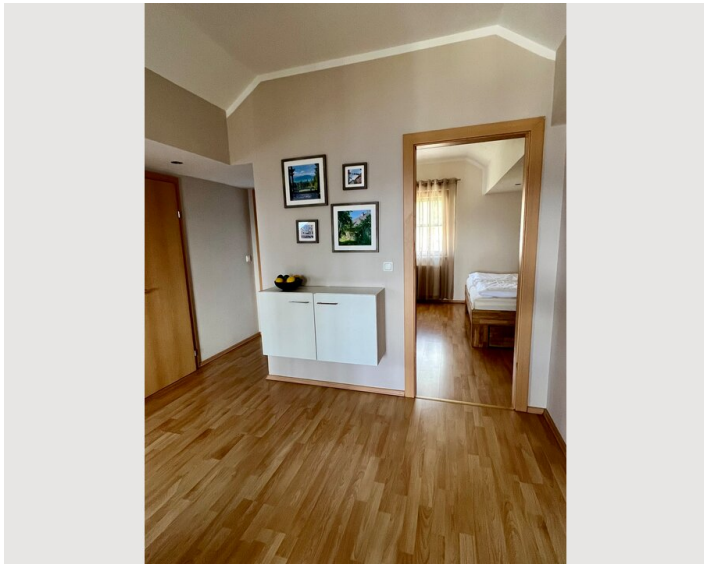
- Not suitable for children
- Desk/Workplace
- Regular cleaning at extra cost
- Smoking not allowed
- Pets forbidden

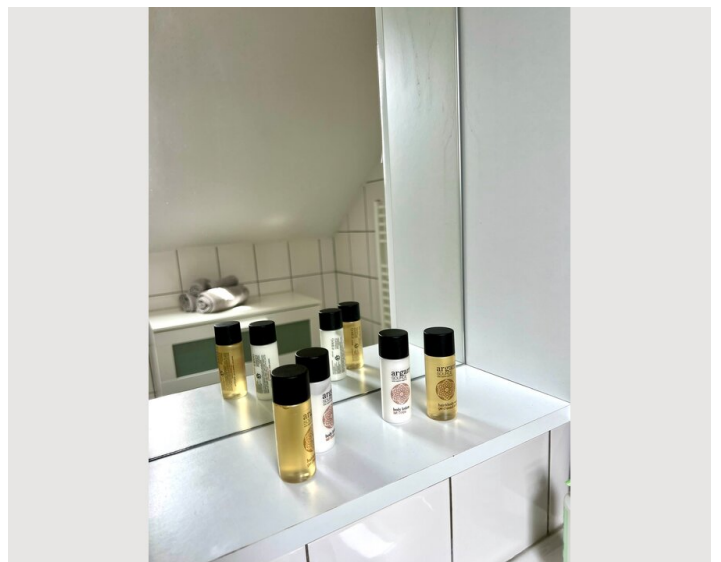
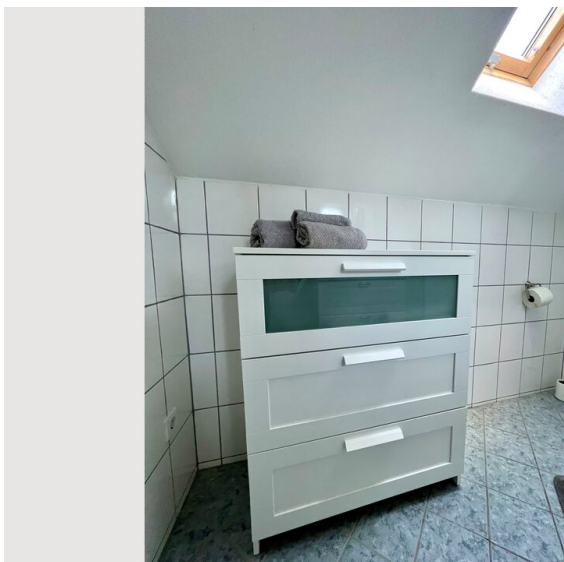
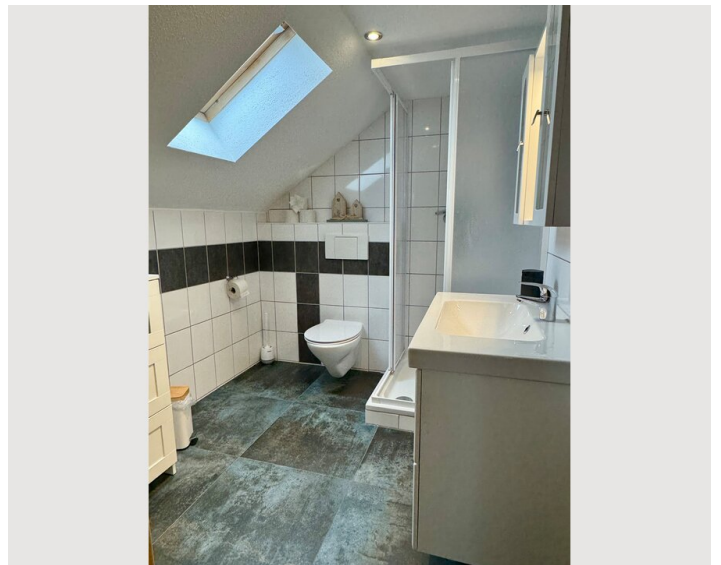
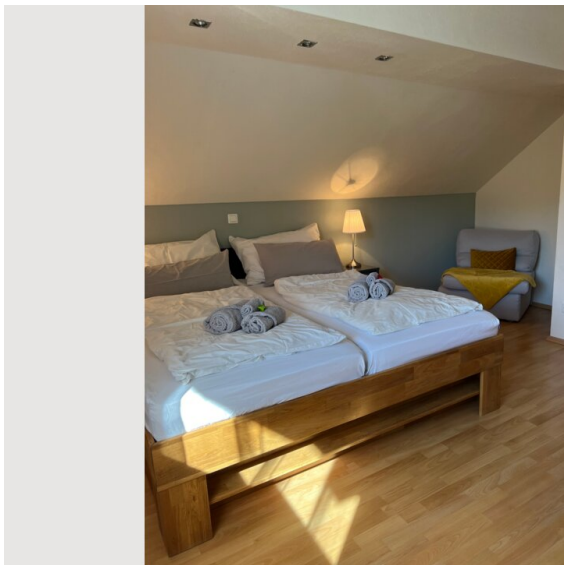
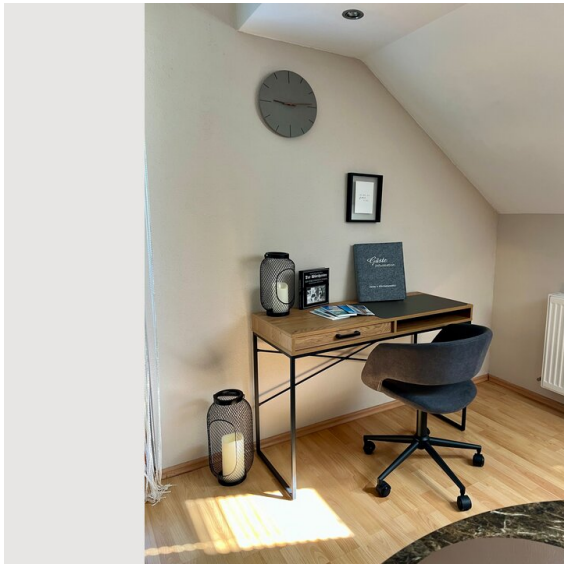
## Picture gallery



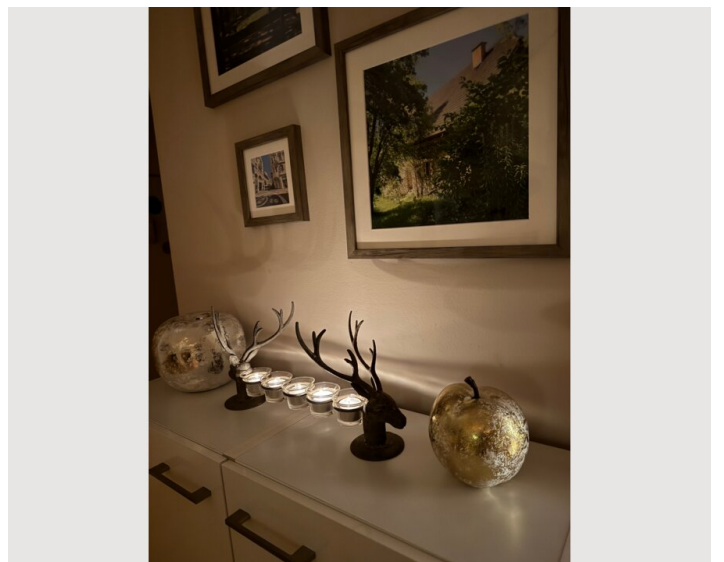
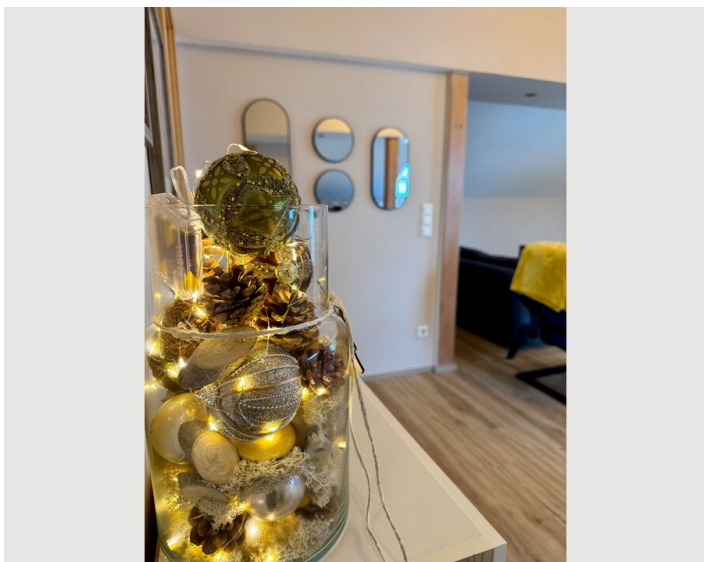
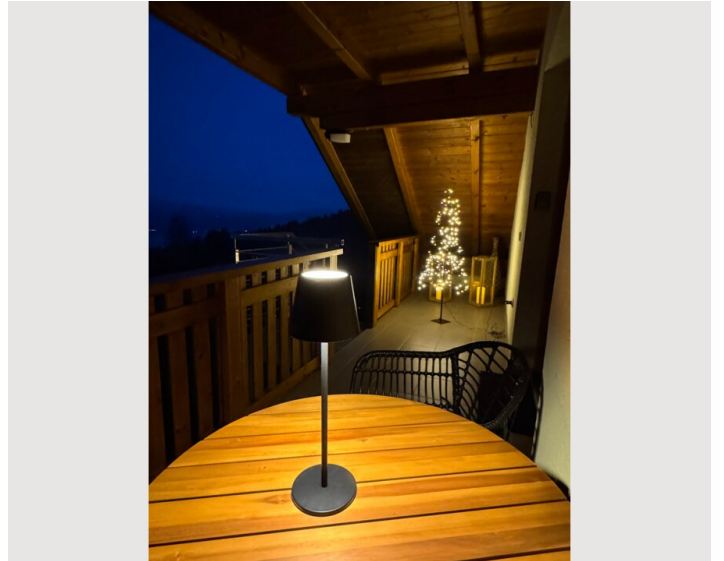














### Infrastructure

 2,5 km Schiefling

 25 km Klagenfurt

 11 km Velden

The apartment is peacefully located yet well connected. The nearest supermarket and bus stop are about 2.5 km away. The center of Velden is around 9 km, and Klagenfurt Airport is approximately 25 km from the property. Beautiful cycling and hiking trails start right at your doorstep – it takes about 1 hour and 15 minutes to hike up to the Pyramidenkogel viewing tower.

### Location

