



STUDIO APARTMENT, 6100 SEEFELD

Seefeld - Apartment

Object number: KLIU2

[View and rent online](#)

This compact and cozy apartment of approx. 22 m² is located on the 3rd floor of a well-maintained building with an elevator. - Combined living/sleeping area with a single bed and a couch - Kitchen with washing machine - Parking space included

Period	21/12/2025 - 21/01/2026
Number of persons	2
Total incl. VAT.	€ 981,58
Security deposit	€ 700,00



Living space

20m²



Maximum occupancy

1 Person



Complete accommodation [?]

1 Private bathroom 1 Living-Sleepingroom



3. floor



Check-in

17:30 - 22:00 Clock



Check-out

06:30 - 10:00 Clock

Sleeping options

Living and sleeping



1x Single bed



1x Sofa bed (1 person)

Description of accommodation

This compact and cozy apartment of approx. 22 m² is located on the 3rd floor of a well-maintained building with an elevator.

- Combined living/sleeping area with a single bed and a couch
- Kitchen with washing machine
- Parking space included

Equipment & Features



Basic equipment

- Private washing machine
- Private toilet
- Bedclothes
- Parking space



First supply

- Toilet paper



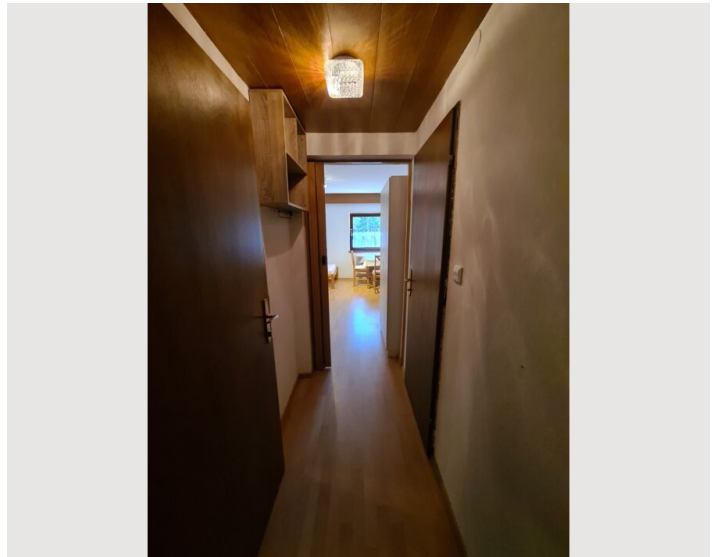
Kitchen

- Private kitchen
- Glasses/Tableware
- Cooking utensils

Informations

- Suitable for construction workers

Picture gallery





Infrastructure



5 minute walk away



5 minute walk away

Excellent Infrastructure in Close Proximity

The apartment is ideally located in Seefeld in Tirol. The train station and the town center are just a 5-minute walk away. In the center, you'll find numerous shopping options for everyday needs, including supermarkets and specialty stores.

Leisure and recreation are also well catered for: A public swimming pool, a ski lift, an ice skating rink, and a golf course are all nearby. A pharmacy is also within easy reach. In addition, Seefeld offers an extensive cross-country skiing network that starts right outside the front door – perfect for winter sports enthusiasts.

Location

