

STUDIO APARTMENT, 1120 VIENNA

**All-inclusive 32 m<sup>2</sup> apartment right next to Vienna Meidling train station and metro station → The apartment can be rented for a maximum of 6 consecutive months.**

Object number: HABQ2

[View and rent online](#)

All-inclusive 32 m<sup>2</sup> apartment close to the train station as well as the U4 Meidling and U6 Niederhofstraße metro stations → The apartment can be rented for a maximum of 6 consecutive months.

<b>Period</b>	18/12/2025 - 18/01/2026
<b>Number of persons</b>	2
<b>Total incl. VAT.</b>	€ 1.359,24
Security deposit	€ 1.000,00



#### Living space

32m<sup>2</sup>



#### Maximum occupancy

2 Persons



#### Complete accommodation <sup>?</sup>

1 Private bathroom 1 Living-Sleepingroom



#### 3. floor



#### Check-in

12:00 - 22:00 Clock



#### Check-out

14:00 - 22:00 Clock

## Sleeping options

### Living and sleeping



1x Double bed (1,60 m x 2 m)



1x Sofa bed (2 persons)

## Descripton of accommodation

Cozy and centrally located 32 m<sup>2</sup> apartment with stylish decor. Perfect for singles or couples looking for a comfortable place to stay. The apartment is in an excellent location – close to shops and public transport. The entrance leads to a shared balcony, which can also be used by smokers, for example. The apartment is located on the 3rd floor (no elevator) and is relatively quiet, situated on a side street, so there's no traffic noise. The bathroom with toilet is fully equipped with everything you need. The kitchen is comfortable and fully equipped with modern appliances. Thanks to the many windows, the apartment is very bright. Smart IoT devices in all rooms ensure your safety (e.g., in case of water leaks or smoke).

A 24/7 check-in and check-out option allows for flexible arrival and departure.

High-speed internet enables comfortable remote work and seamless streaming of your favorite shows and movies on the provided smart TV.

## Equipment & Features



### Basic equipment

- TV
- Bedclothes
- Private toilet
- Iron & ironing board
- Hairdryer
- Private washing machine
- Towels
- Vacuum cleaner
- Cleaning utensils



### First supply

- Toilet paper
- Soap
- shampoo
- Nespresso capsules



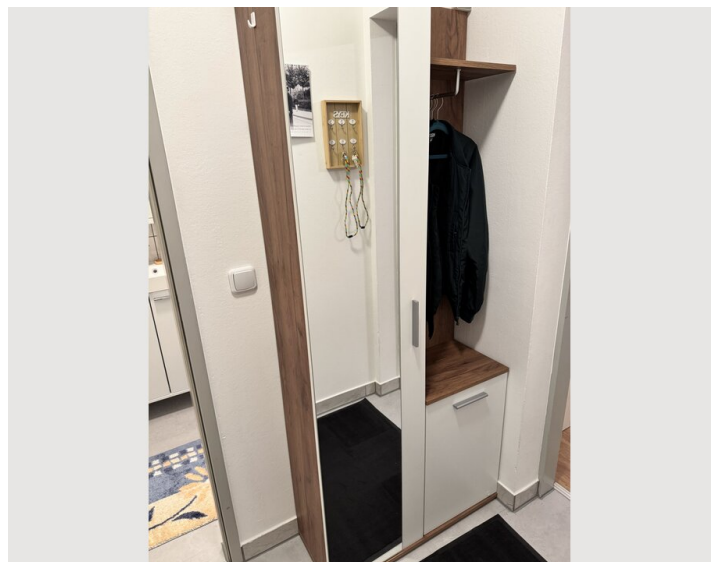
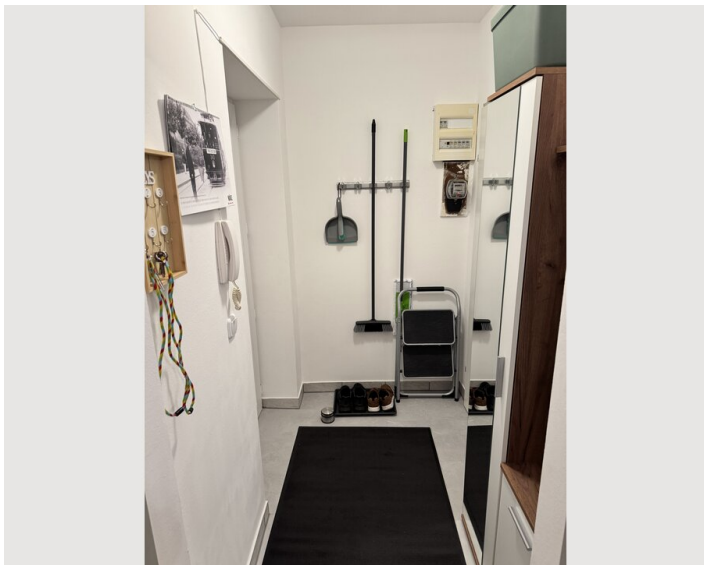
### Kitchen

- Private kitchen
- Espresso machine
- Microwave
- Glasses/Tableware
- Dishwasher

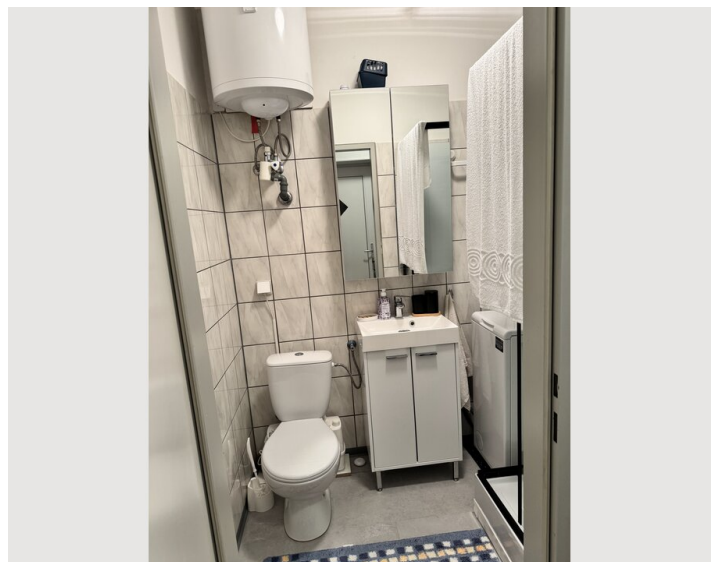
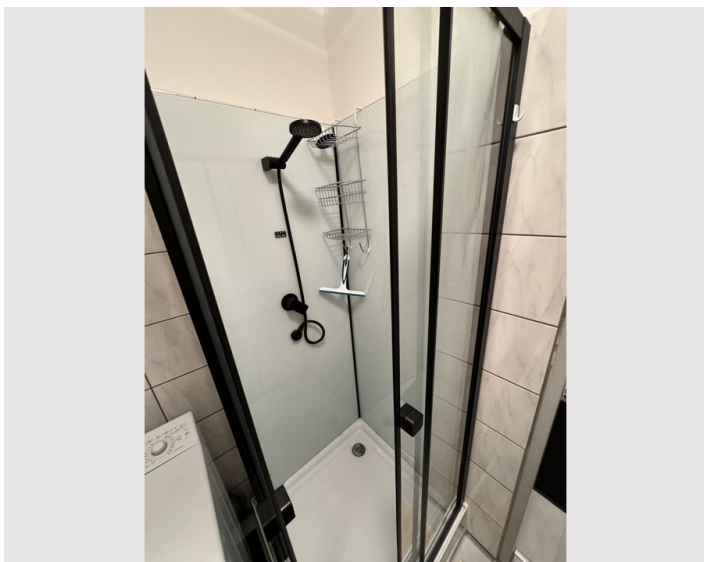
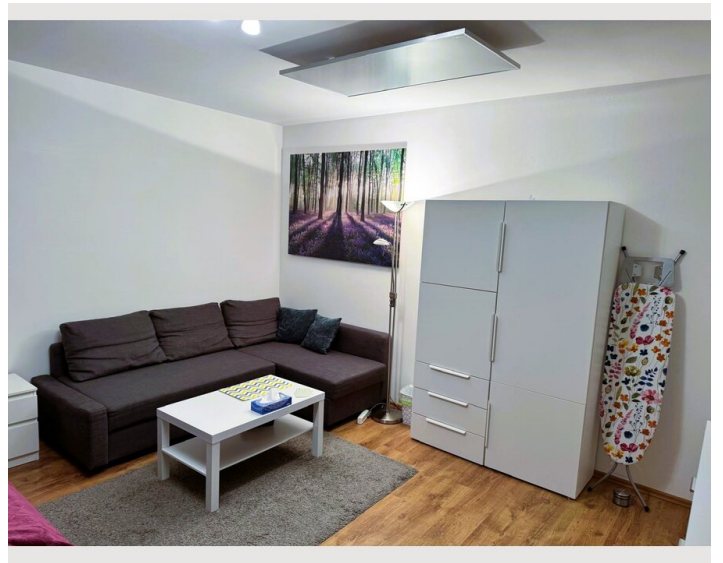
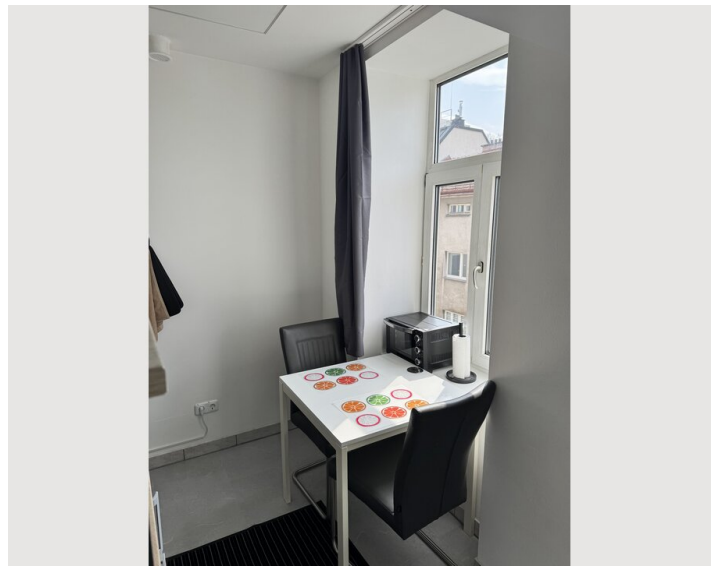
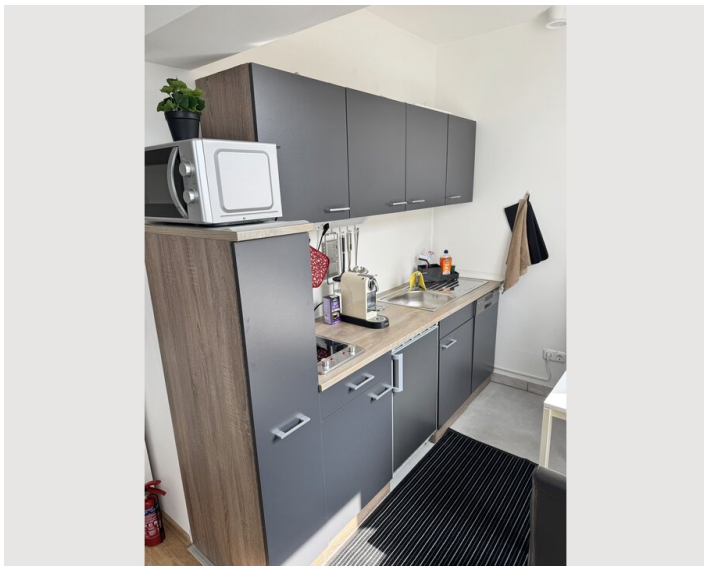
## Informations

- Suitable for construction workers
- Short-term parking zone subject to a charge
- Pets forbidden
- Smoking not allowed
- Private entrance

## Picture gallery







### Infrastructure



Just a 5-minute walk to Meidling train station.

A 13-minute walk to the U4 Längenfeldgasse station (approximately 900 meters).

Just an 8-minute walk to the U6 Niederhofstraße metro station.

---

The apartment is located in the 12th district (Meidling) with excellent transport connections. Wien Meidling station, a major transport hub, provides access to S-Bahn, regional, and long-distance trains. The U6 Niederhofstraße and U4 Längenfeldgasse metro stations offer quick connections to the city center and other districts. Nearby, you will find numerous shops, supermarkets, bakeries, as well as restaurants and cafés. Parks and recreational areas provide space for leisure and relaxation. Schools, kindergartens, and medical facilities complete the infrastructure, making the area suitable for families. Public transport stops are right outside the door, ensuring flexible mobility.

Location

