



2 ROOM APARTMENT, 4020 LINZ

Green oasis in the center, quiet, Wi-Fi, elevator

Object number: ODHL1

[View and rent online](#)

Period	20/12/2025 - 20/01/2026
Number of persons	2
Total incl. VAT.	€ 2.763,43
Security deposit	€ 2.100,00

★ Modern and lovingly furnished ★ Courtyard-facing and extremely quiet ★ Super central, near the Old Town, theaters, museums ★ Bike storage and proximity to the Danube - perfect for cyclists ★ Ideally equipped for long-term stays ★ Huge roof terrace



Living space

55m²



Maximum occupancy

4 Persons



Complete accommodation ?

1 Private bathroom 1 Separated bedroom 1 Living-Sleepingroom



5. floor

Elevator available



Check-in

15:00 - 00:00 Clock



Check-out

10:00 - 00:00 Clock

Sleeping options

Sleeping room



1x Double bed (1,60 m x 2 m)

Living and sleeping



1x Sofa bed (2 persons)

Descripton of accommodation

Apartment:

Our apartment has been furnished with great attention to detail and is very comfortable, tailored to the needs of travelers.

It offers a beautiful view of the park. The apartment is on the 5th floor with an elevator – it is bright and extremely quiet. We have a huge roof terrace with a lounge for relaxing outdoors.

The fully furnished apartment offers all the comforts of a beautiful home. Cozy and modern interior design, a comfortable size, and a large outdoor area. Our apartment is easily accessible by elevator. From the Nespresso machine to the comfortable bed with pleasant linens – you won't miss anything you expect for a pleasant stay.

The bedroom has a queen-size bed, a large wardrobe, and direct access to the roof terrace.

We offer you a workspace and super-fast 100 Mbit Wi-Fi, as well as a 65" Smart TV for a cozy movie or TV show night.

In the living/dining room, you can relax on the comfortable sofa. The sofa can be converted into a comfortable sofa bed. With a 140x200 cm bed, it offers additional sleeping space for up to two people.

There is also a spacious dining area for up to 6 people and a fully equipped kitchen.

Equipment & Features



Basic equipment

- Balcony
 - Internet/Wifi
 - Private washing machine
 - Towels
 - Vacuum cleaner
 - Cleaning utensils
 - Roof-terrace
 - TV
 - Bedclothes
 - Private toilet
 - Iron & ironing board
 - Hairdryer
-



Fireplace

- Charcoal grill
-



First supply

- Toilet paper
 - Soap
 - shampoo
 - Nespresso capsules
-



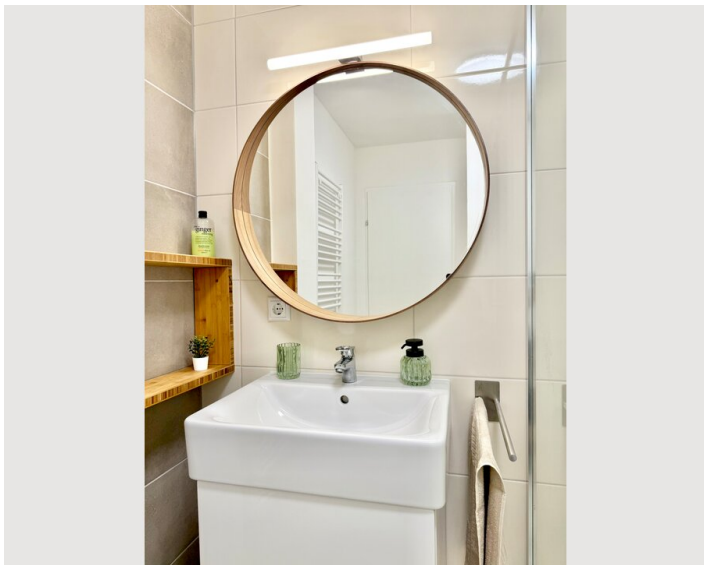
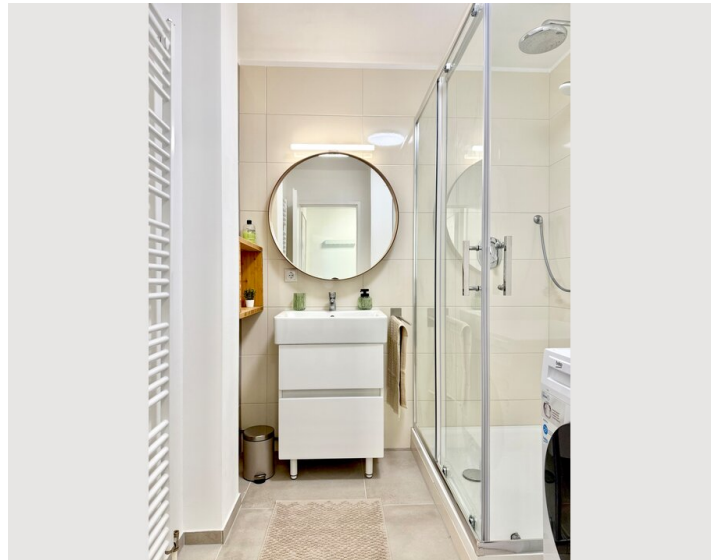
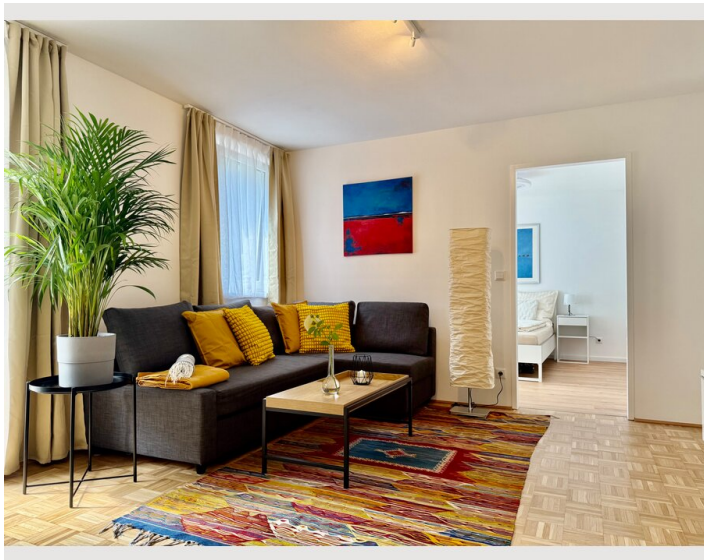
Kitchen

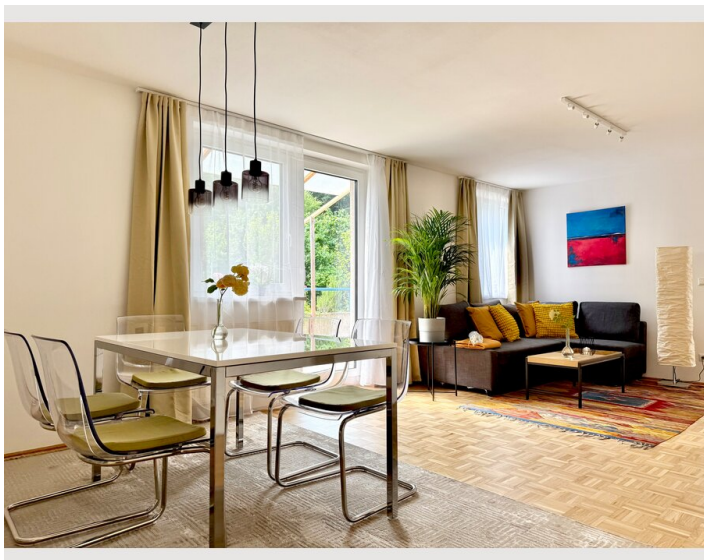
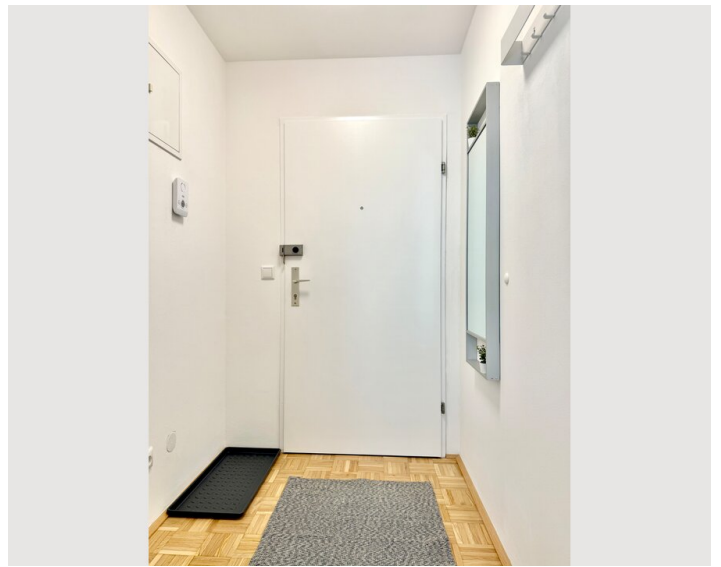
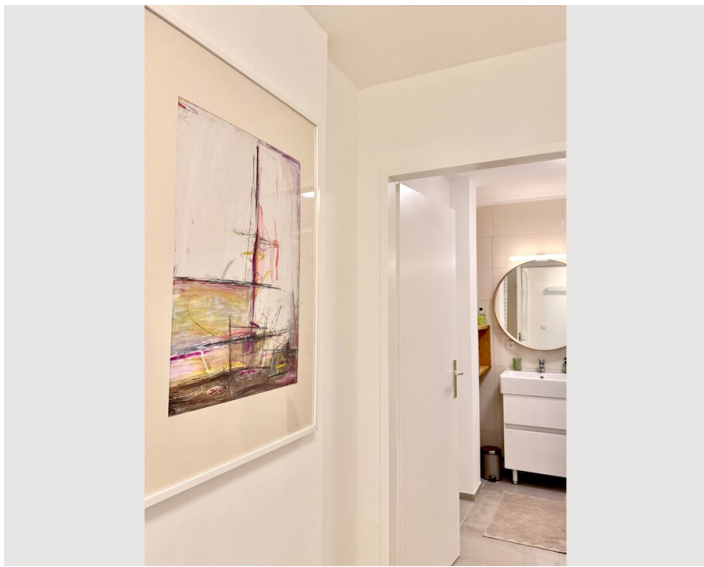
- Private kitchen
- Glasses/Tableware
- Dishwasher
- Cooking utensils
- Espresso machine
- Microwave

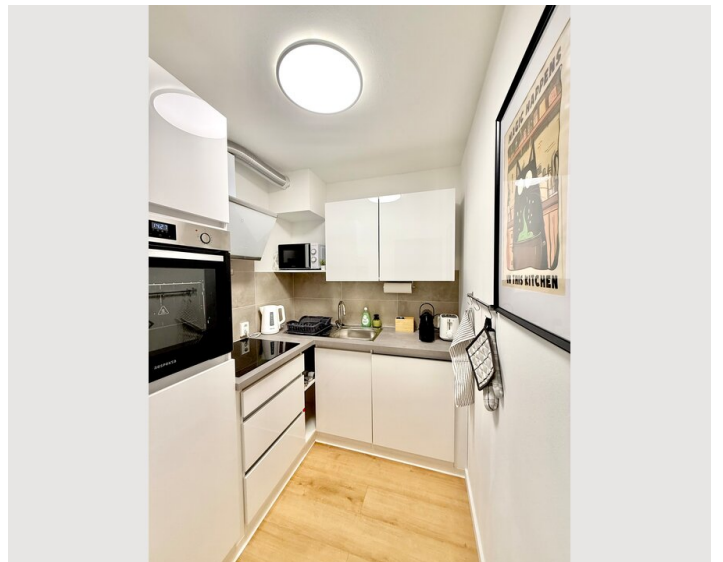
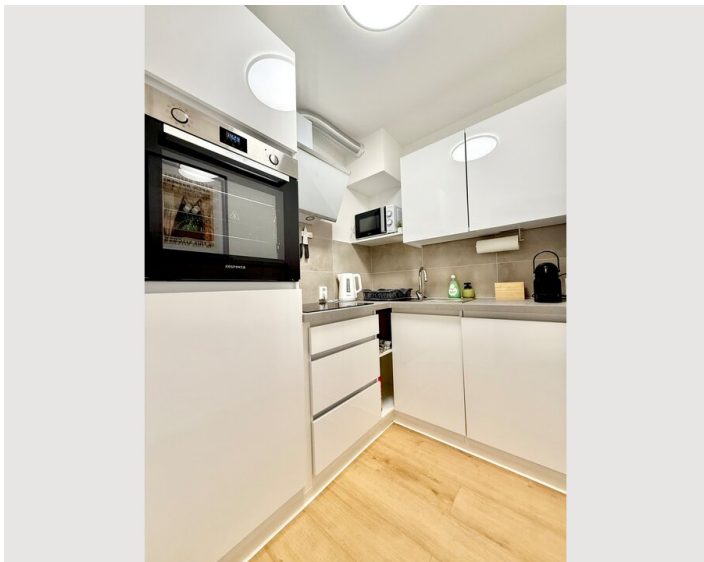
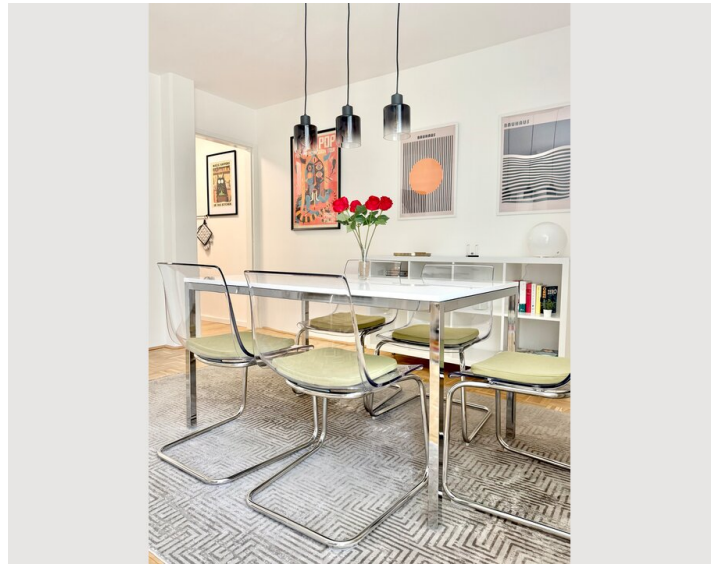
Informations

- Suitable for construction workers
- Smoking not allowed
- Desk/Workplace
- Pets on request
- Bicycle room free of charge
- Suitable for children
- Short-term parking zone subject to a charge
- Private entrance
- Regular cleaning at extra cost

Picture gallery









Infrastructure



Location:

Our apartment is located right in the center of Linz near the cathedral, super central, with the courtyard facing the adjacent park. Perfect for a wonderful time in Linz. The Landstraße, the Danube promenade, and Linz's old town are a 10-minute walk away. In the immediate vicinity, you'll find excellent shopping opportunities, beautiful, lively courtyards, charming cafés and quaint inns, as well as several small art galleries and vintage shops. The State Theater, the Music Theater, the Brucknerhaus, the Casino, as well as interesting museums such as the Lentos Art Museum, the Nordico, the OK Art Center, and the Ars Electronica Center are all within easy reach. The main train station, the Linzer Landhaus, the Castle Museum, and the Botanical Garden are just a few steps away. The Design Center with its changing events and trade fairs is also within easy reach.

For cyclists, we have a lockable bike room, and you can reach the Danube in 4 minutes!

Location

