



2 ROOM APARTMENT, 4040 LINZ

Urban Retreat Linz Center

Object number: VGTS1

[View and rent online](#)

Modern Living in the Heart of Linz – Exclusive 1-Bedroom Apartment with Underground Parking in a Prime Location This stylishly furnished 1-bedroom apartment offers 47 m² of living space and is located on the 13th floor of the Lentia City Center.

Period	27/05/ - 27/06/2026
Number of persons	2
Total incl. VAT.	€ 2.210,20
Security deposit	€ 1.600,00



Living space

47m²



Maximum occupancy

4 Persons



Complete accommodation [?]

1 Private bathroom 2 Separated bedrooms



13. floor

Elevator available



Check-in

14:00 - 22:00 Clock



Check-out

06:00 - 10:00 Clock

Sleeping options

Bedroom 1



1x Double bed (1,80 m x 2 m)

Bedroom 2



1x Sofa bed (2 persons)

Descripton of accommodation

This modern 1-bedroom apartment on the 13th floor of the Lentia City Center offers stylish living across 47 m² – ideal for business travelers, expats, or project professionals. It features a new kitchen, modern bathroom, smart TV, high-speed WiFi, and a comfortable living area with extra sleeping space. The underground parking, excellent public transport connections, and direct access to supermarkets, doctors, a gym, 20+ restaurants, and various shops make it a perfect retreat for extended stays in Linz. Quiet, central, and fully equipped – just move in and feel at home. The view from the 13th floor over the city of Linz offers a breathtaking atmosphere both day and night.

Equipment & Features



Basic equipment

- Internet/Wifi
 - TV
 - Towels
 - Garage
 - Iron & ironing board
 - Music system/docking station
 - Bedclothes
 - Private toilet
 - Vacuum cleaner
 - Hairdryer
-



First supply

- Toilet paper
 - Nespresso capsules
-



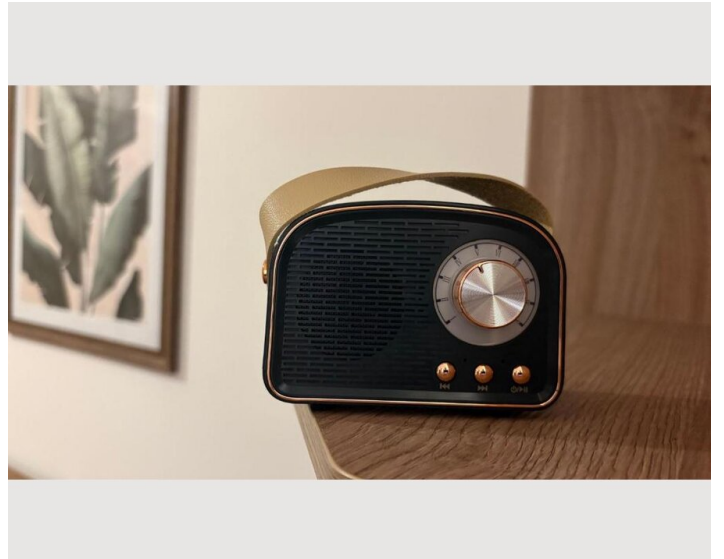
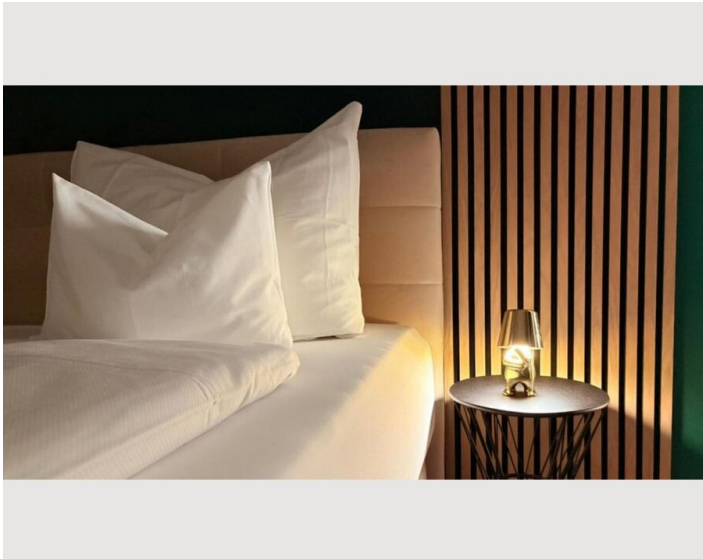
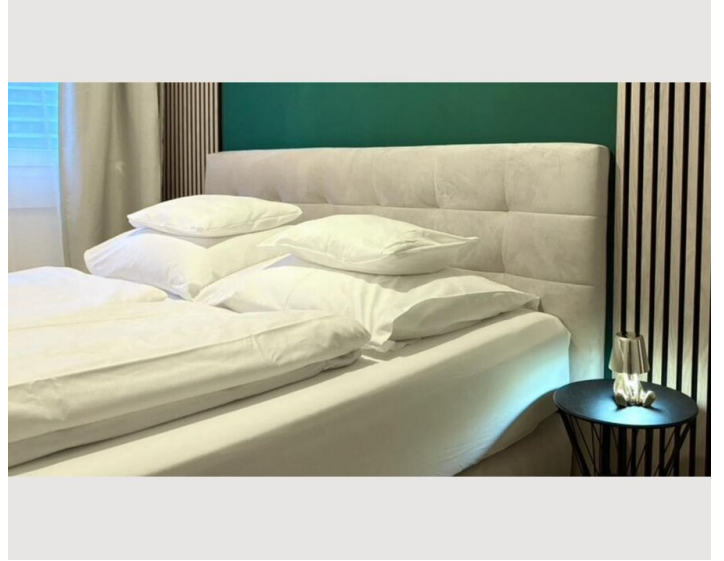
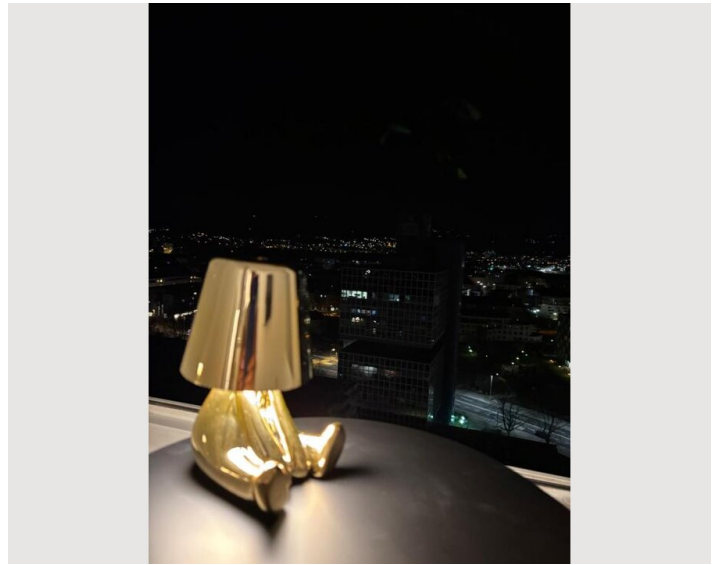
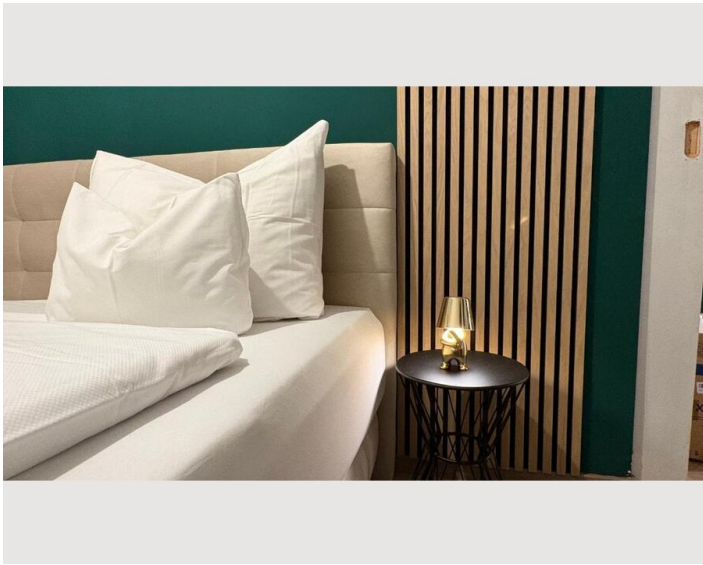
Kitchen

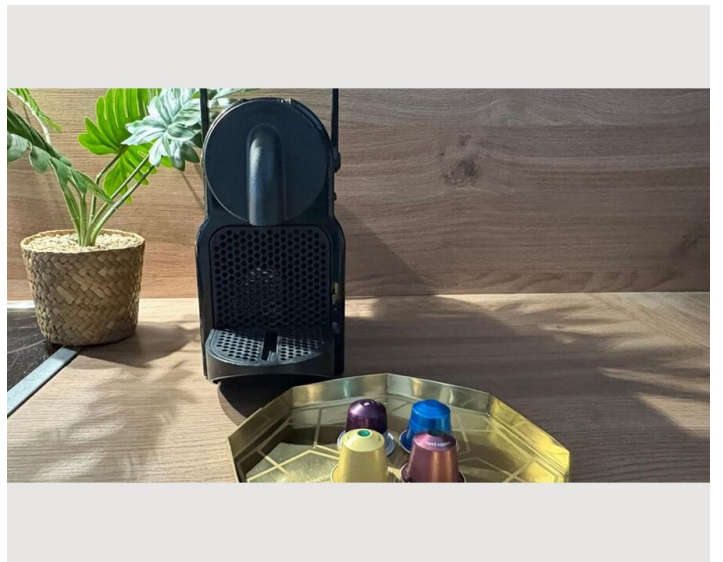
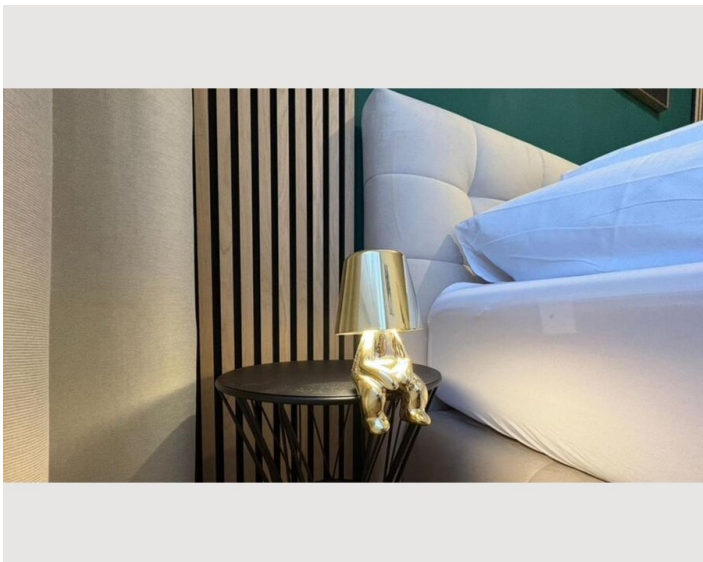
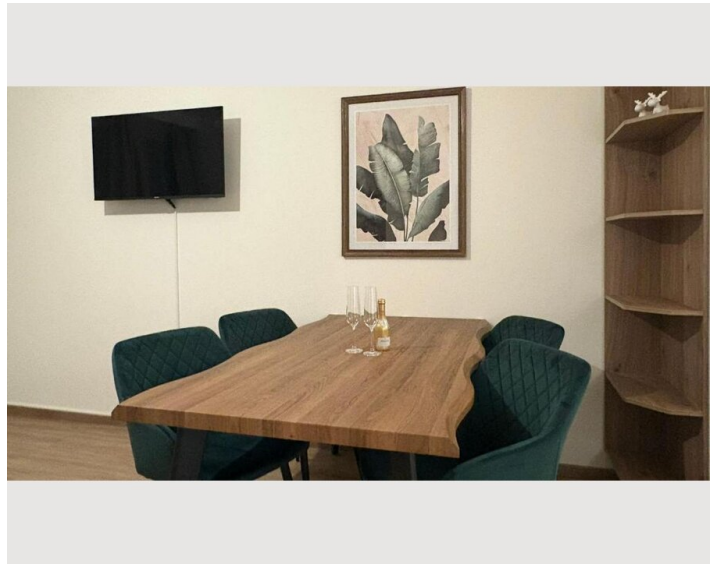
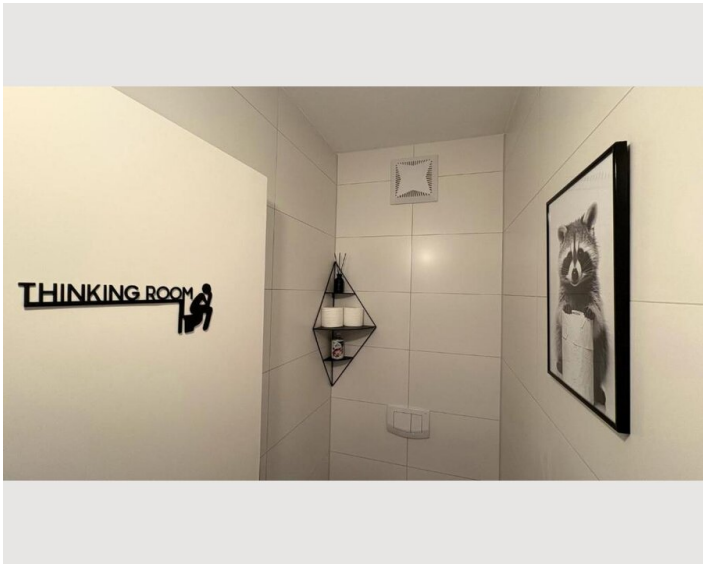
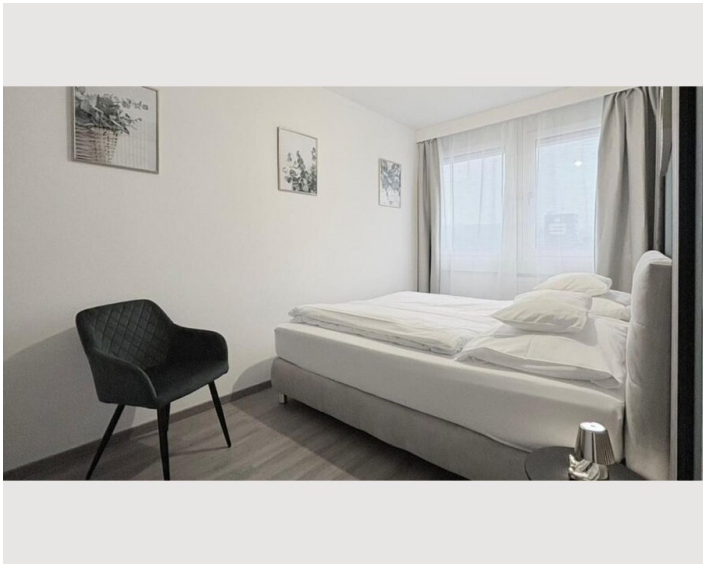
- Private kitchen
- Espresso machine
- Microwave
- Glasses/Tableware
- Dishwasher

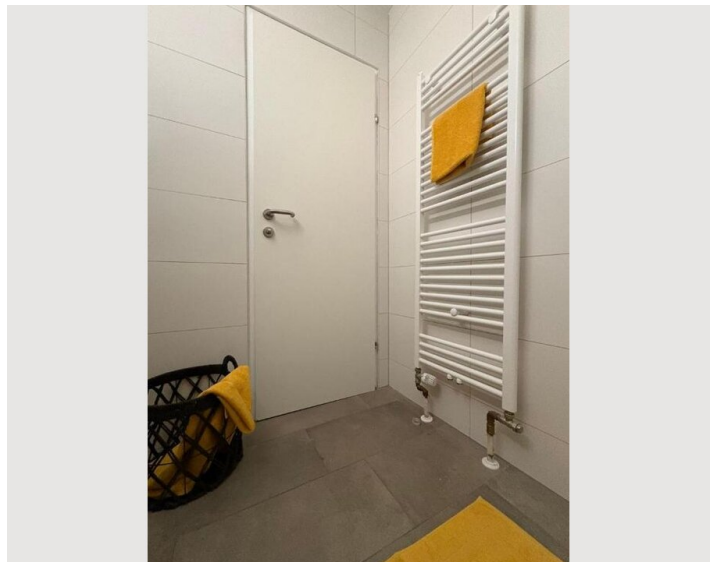
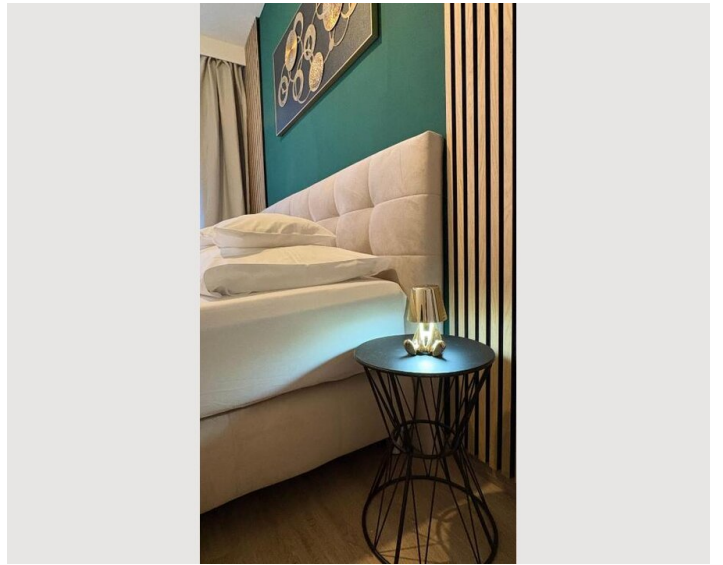
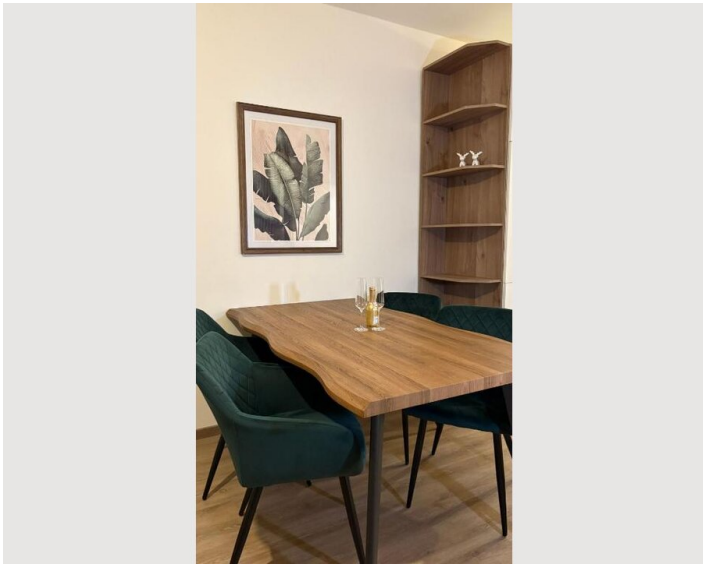
Informations

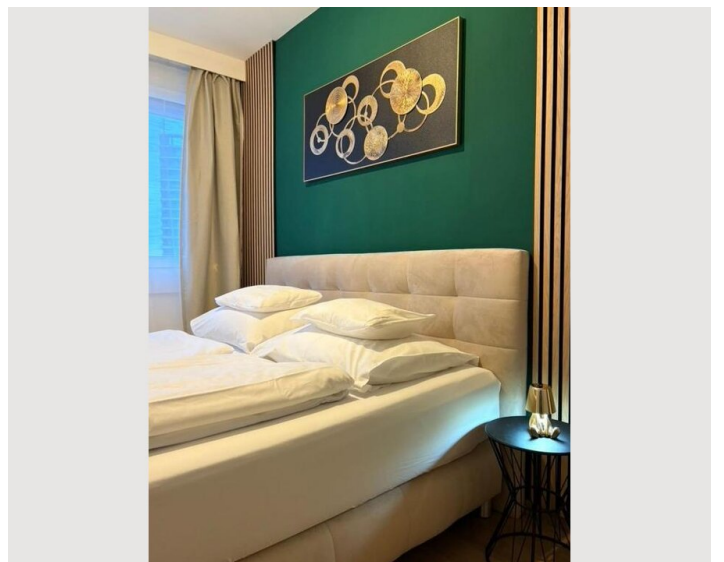
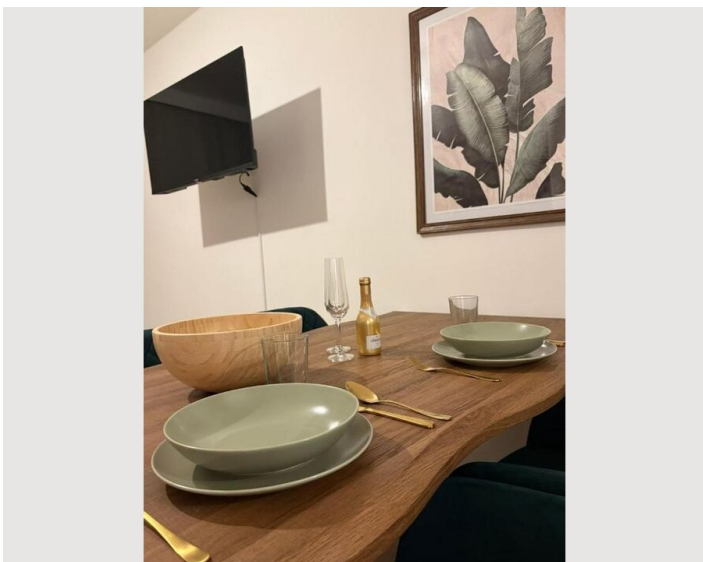
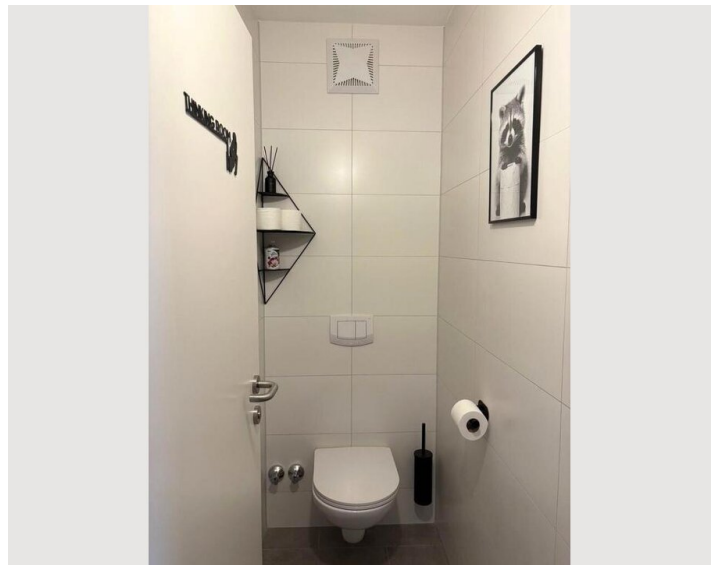
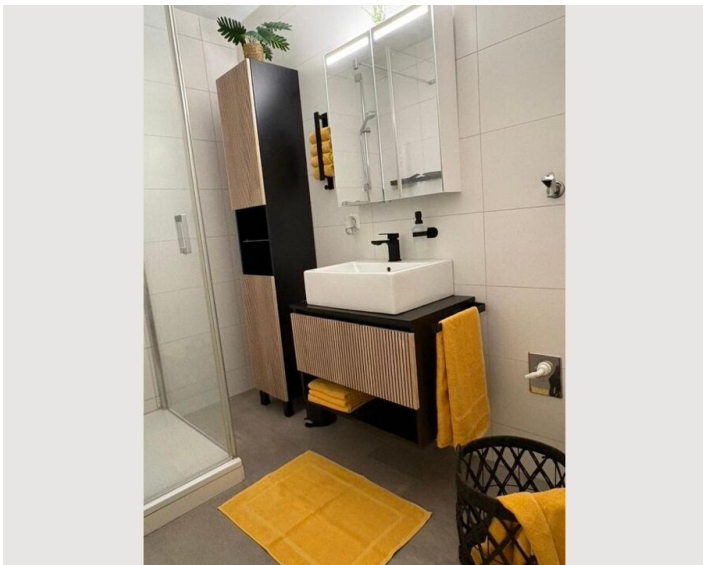
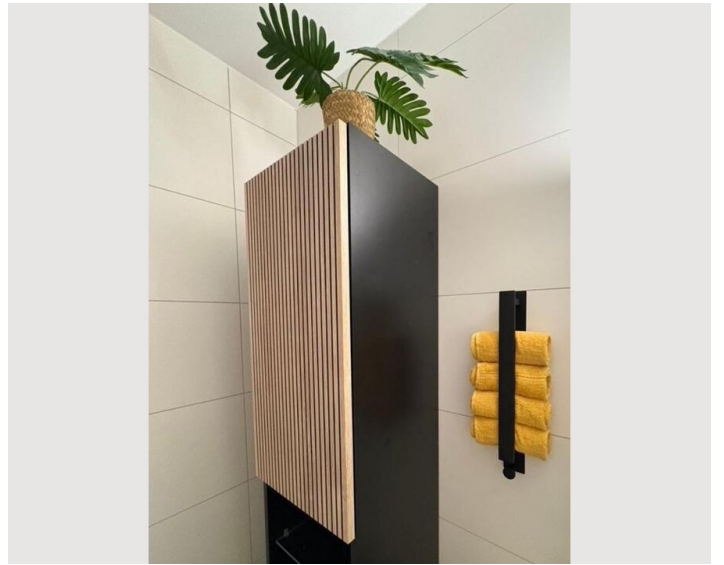
- Suitable for children
- Desk/Workplace
- Pets forbidden
- Bicycle room free of charge
- Smoking not allowed
- Private entrance
- Regular cleaning at extra cost

Picture gallery












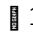



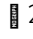
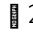
Infrastructure

 150 meters

 in the same House

 In the center of Urfahr, a 5-minute walk to the Nibelungen Bridge.

 Distance:  3.9 km by car  40 minutes on foot
 16 minutes by public transport

  25 minutes by car  55 minutes by public transport

Prime location in Lentia City: supermarkets, gym, pharmacy, doctors & 20+ restaurants in the building. Public transport at your doorstep, city center just 5 min away. Everything you need for daily life & business – urban, convenient, efficient.

Location

