



STUDIO APARTMENT, 5760 SAALFELDEN








# Flower Power Apartment

Object number: QFWQ1

[View and rent online](#)

Monthly rental Sept–mid-Dec 2025! Cozy 30 m² Flower Power Apartment with mountain view, vintage bathroom, kitchen, Wi-Fi & TV. Ideal for 2 people (dogs welcome) who love peace & nature. Also available from March.

Period	20/12/2025 - 20/01/2026
Number of persons	2
Total incl. VAT.	€ 1.662,20
Security deposit	€ 1.300,00

 <b>Living space</b> 30m²	 <b>Ground floor</b>
 <b>Maximum occupancy</b> 2 Persons	 <b>Check-in</b> 17:00 - 23:00 Clock
 <b>Complete accommodation</b>  1 Private bathroom 1 Living-Sleepingroom	 <b>Check-out</b> 07:00 - 10:00 Clock

## Sleeping options

### Living and sleeping



1x Double bed (1,80 m x 2 m)

## Descripton of accommodation

Monthly rental of the holiday apartment from September to mid-December 2025!

Flower Power Apartment (approx. 30 m<sup>2</sup>) on the ground floor with direct mountain view. A place to unwind: wooden floor in the bedroom, a nostalgic vintage-style bathroom, and a small kitchen with microwave, 2-burner stove, dishwasher, and fridge. Wi-Fi and TV are included. Ideal for two – dogs welcome – who want to enjoy peace, nature, and simple comfort together.

## Equipment & Features



### Basic equipment

- Garden
- TV
- Bedclothes
- Private toilet
- Vacuum cleaner
- Cleaning utensils
- Garden sharing
- Community washing machine
- Towels
- Private parking space
- Iron & ironing board
- Hairdryer



### First supply

- Toilet paper
- Soap
- Fridge filling on request
- shampoo
- Nespresso capsules



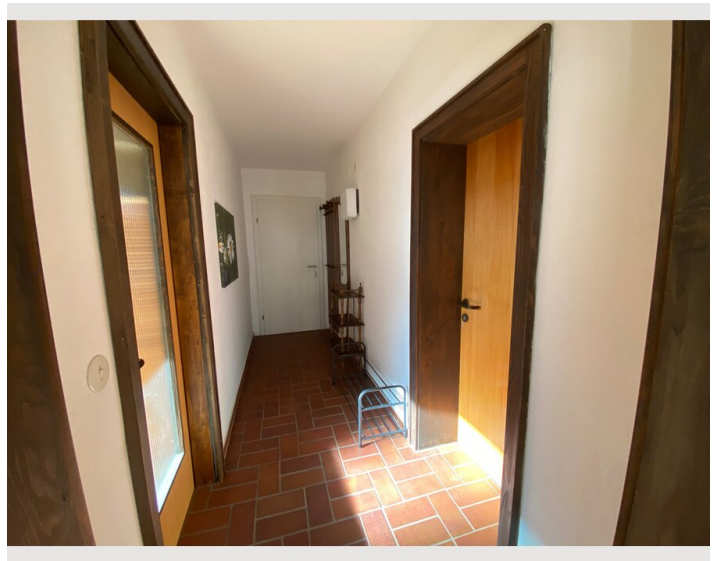
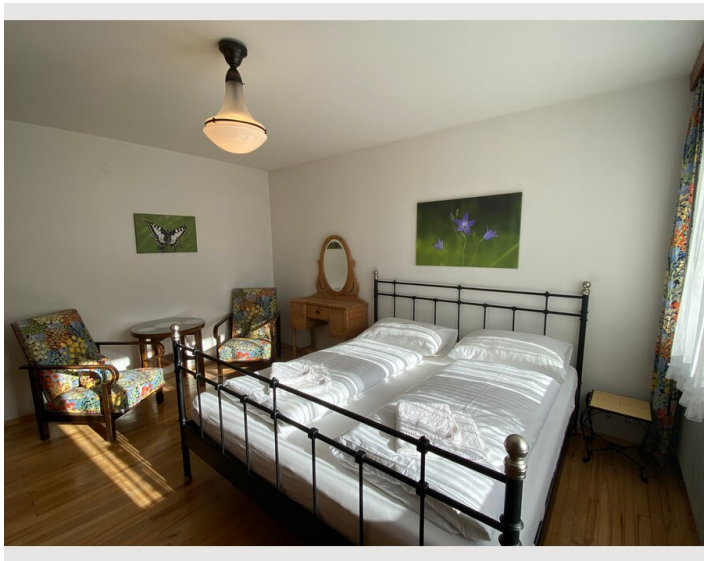
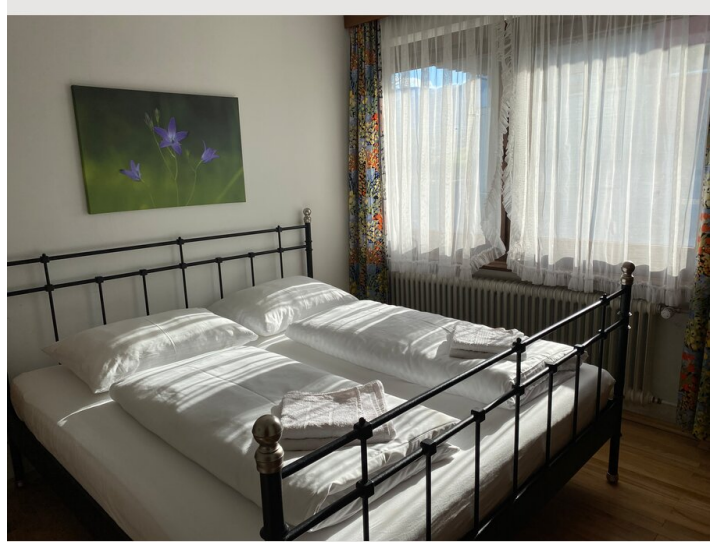
### Kitchen

- Private kitchen
- Glasses/Tableware
- Dishwasher
- Cooking utensils
- Espresso machine
- Microwave

## Informations

- Suitable for construction workers
- Smoking not allowed
- Pets allowed
- Bicycle room free of charge
- Suitable for children
- Private entrance
- Regular cleaning at extra cost

## Picture gallery







### Infrastructure



Quiet location at the end of a cul-de-sac. The city center is easily accessible by city bus or bicycle. Alternatively, regional buses from the stop on the B311 – about a 10-minute walk away – connect you to the surrounding area.

Location

