



STUDIO APARTMENT, 4881 STRASS IM ATTERGAU

B3 Sunny apartment

Object number: B3

[View and rent online](#)

Period	15/08/ - 15/09/2025
Number of persons	2
Total incl. VAT.	€ 825,04
Security deposit	€ 600,00

The apartment house Sagerer is located halfway between Mondsee and Attersee, in a small quiet side valley, in the middle of nature, nestled between Auerwaldbach, meadows and the edge of the forest.



Living space

30m²



Maximum occupancy

2 Persons



Complete accommodation [?]

1 private bathroom 1 Living-Sleepingroom



1. floor



Check-in

15:00 - 20:00 Clock



Check-out

07:00 - 10:00 Clock

Sleeping options

Living and sleeping



1x Double bed (1,60 m x 2 m)



1x Sofa bed (2 persons)

Descripton of accommodation

The 1-room apartment is located on the 1st floor and is fully furnished for you. It has a fully equipped kitchen and a separate bathroom. There is a box spring bed and a pull out sofa.

With balcony towards garden view

Equipment & Features



Basic equipment

- Balcony
- Internet/Wifi
- Community washing machine
- Bedclothes
- Private toilet
- Vacuum cleaner
- Garden sharing
- TV
- Community dryer
- Towels
- Private parking space
- Hairdryer



Fireplace

- Charcoal grill



First supply

- Toilet paper
- Soap



Kitchen

- Private kitchen
- Glasses/Tableware
- Cooking utensils
- Filter coffee

Informations

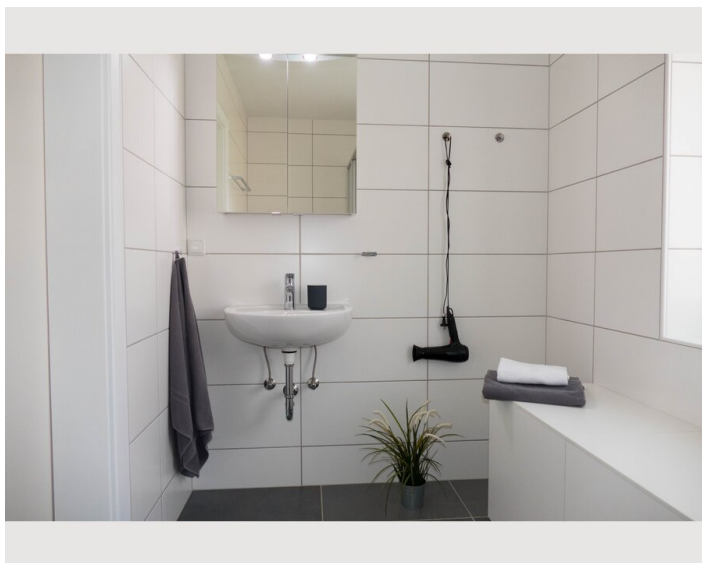
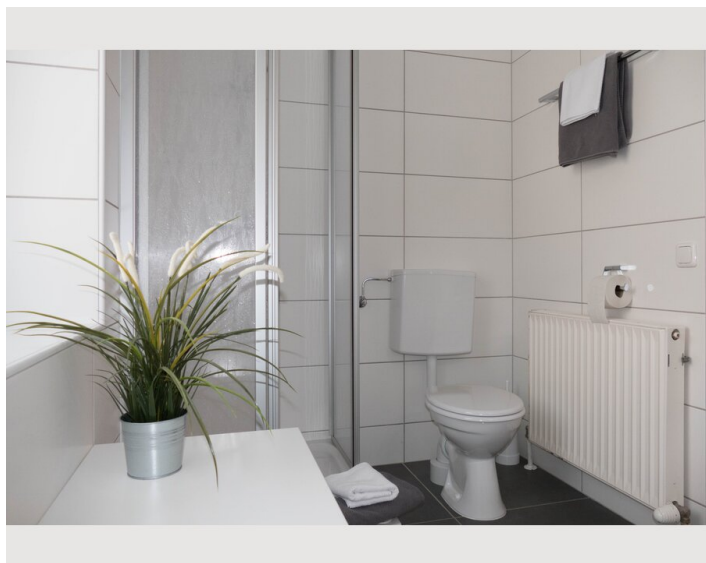
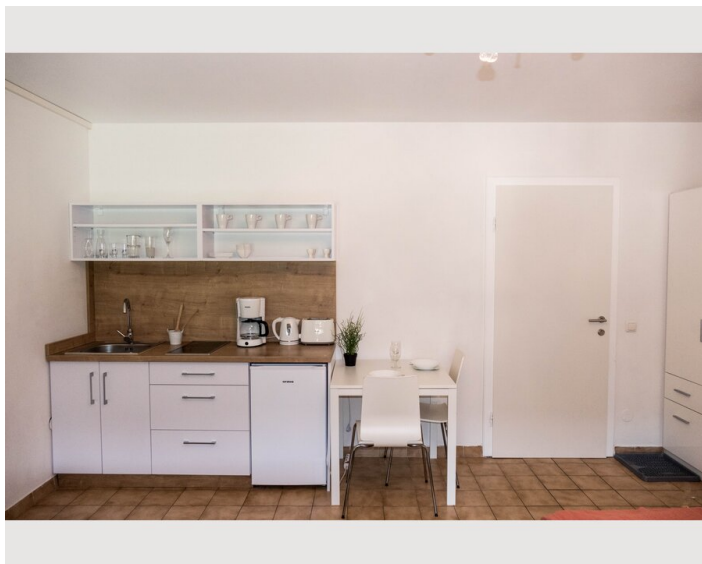
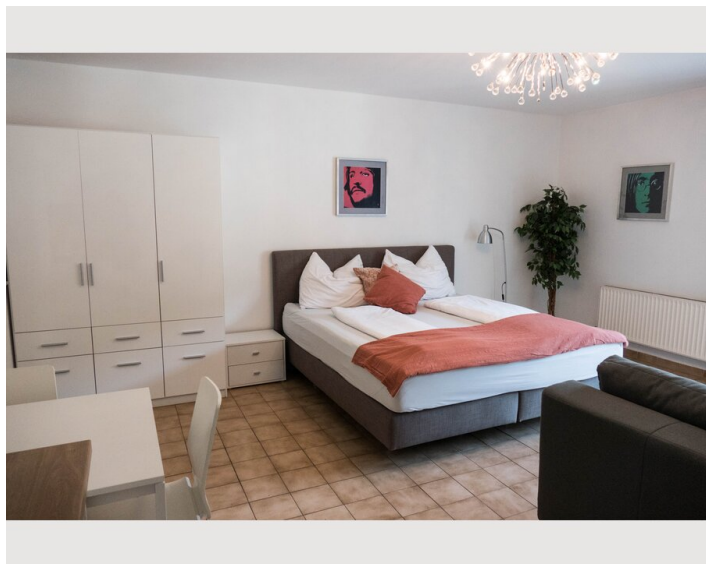
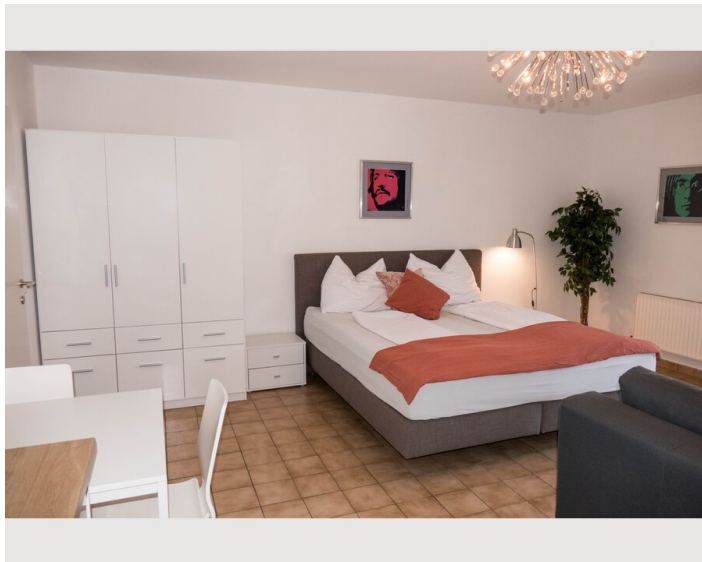
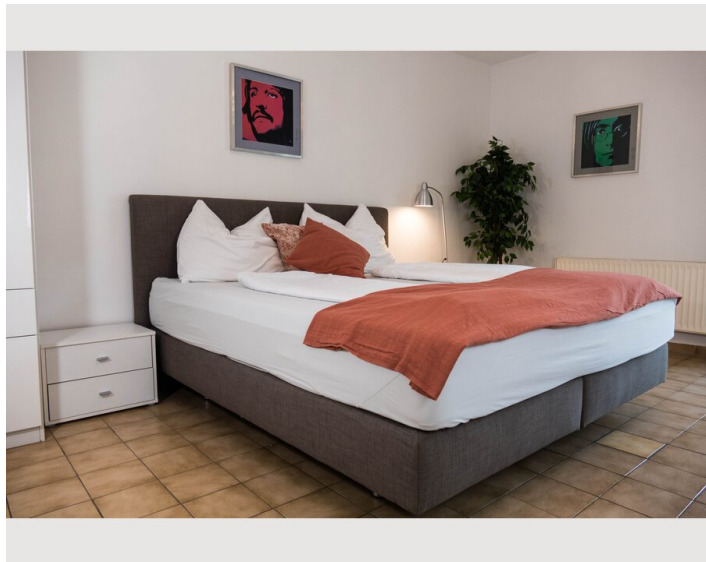
- Suitable for construction workers
- Smoking not allowed
- Regular cleaning at extra cost
- Suitable for children
- Pets forbidden
- Bicycle room free of charge

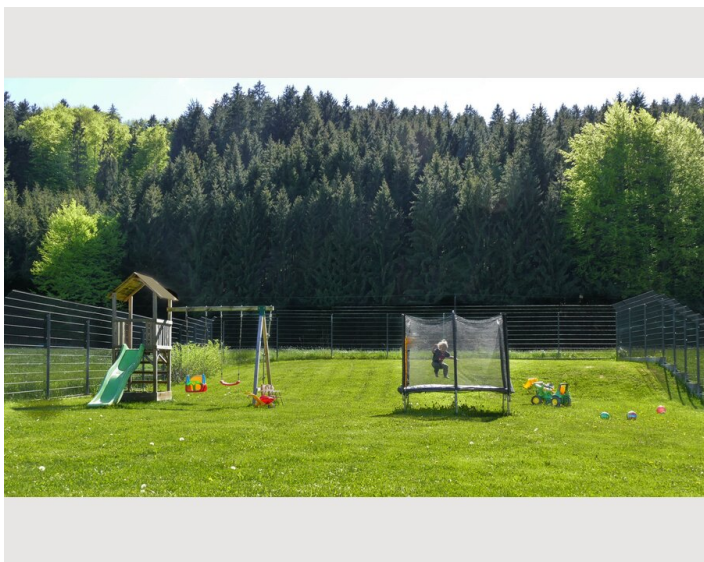
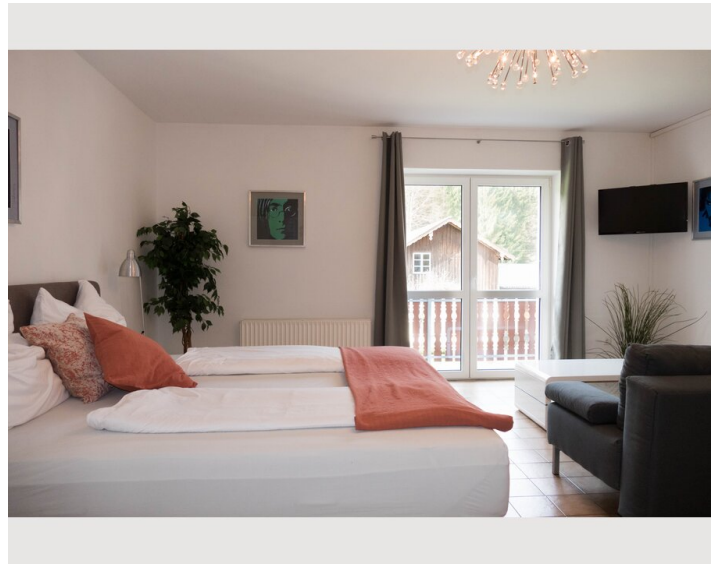
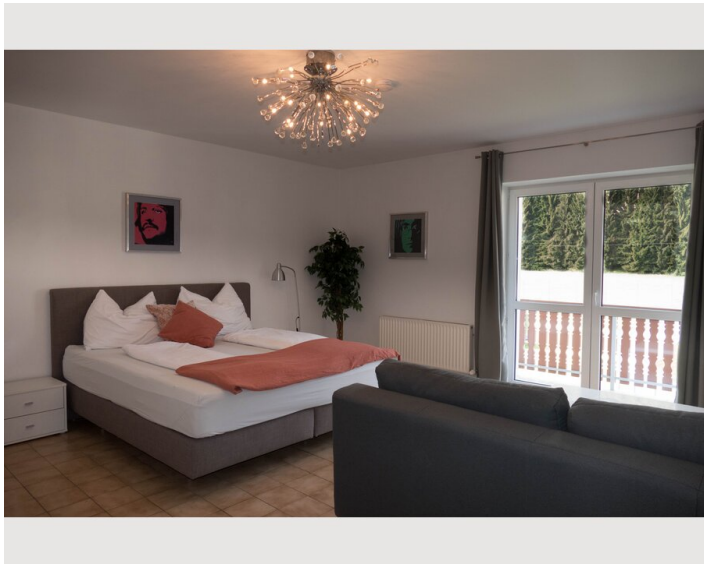
Additional services

- Cleaning every 2 weeks (€ 80,00)

All prices are gross per month - billing is done directly with the lessor.

Picture gallery





Infrastructure

📍 3 minutes by car 3,5 km

🚗 7 minutes by car 4,6 km

🚶 5 minutes by car 3,9 km

🚗 36 minutes by car 50,9 km Salzburg

🚶 13 minutes walk 1.1 km

🚗 56 minutes by car 83 km Linz

In only 5 - 10 minutes you can reach the Attersee or the Mondsee,
St.Georgen for shopping or inns.

In only 36 minutes you can reach Salzburg - the historical and cultural city of Mozart, the festival and the Sound of Music.

In winter you can enjoy two family-friendly ski centers Kronberg and Oberaschau nearby.

Location

