



HOUSE, 3040 NEULENGBACH

House with garden in quiet and central location

Object number: VOQV1

[View and rent online](#)

Period	12/12/2025 - 12/01/2026
Number of persons	2
Total incl. VAT.	€ 1.895,72
Security deposit	€ 1.500,00

Newly renovated house with garden, terrace & country-style kitchen. Quiet location, close to the town center, just a 3-minute walk to the train station (no train noise). Train connection to Vienna and St. Pölten every 30 minutes. Furnished garden hut



Living space

85m²



Maximum occupancy

4 Persons



Complete accommodation [?]

1 Private bathroom 2 Separated bedrooms 1 Living-Sleepingroom



Ground floor



Check-in

15:00 - 23:00 Clock



Check-out

06:00 - 12:00 Clock

Sleeping options

Bedroom 1



1x Double bed (1,80 m x 2 m)

Bedroom 2



1x Single bed

Living and sleeping



1x Sofa bed (1 person)

Descripton of accommodation

House with Garden and Terrace in Neulengbach
Ideal for 2–4 people | Short-term rental 1–6 months

This newly renovated and fully furnished house in a quiet location offers the perfect place for anyone looking for peace, comfort, and nature for a few weeks or months – whether for relaxation, work, or during a transitional phase.

Features:

2 bedrooms (beds for 3 people + 1 sofa bed in the living room)

Spacious, bright living room with seamless access to the terrace

Fully equipped kitchen with dishwasher, new DeLonghi coffee machine, and toaster, as well as a marble kitchen top

Newly renovated bathroom with Jade tiles & separate toilet

High-quality flooring: oak parquet & marble-style tiles in kitchen and corridor

Heat pump & cozy Swedish wood-burning stove

Garage with storage space for furniture, boxes, or sports equipment

Outdoor area:

Sunny terrace, directly accessible from the living room, with lounge set and sun umbrella

Additional second dining area in the garden with sun umbrella

Garden shed: can be used as a meditation room, studio, or guest room

Garden with fruit trees, berry bushes, raised bed, and automated irrigation system

Target groups:

People relocating or in a professional transition

Families

Meditators, artists, retreat guests

Business travelers, long-term vacationers

Location:

Neulengbach – in the Vienna Woods, with fast connections to Vienna (35 minutes) and St. Pölten. Shops, train station, and walking opportunities in nature are all nearby.

Rental period:

1 to 6 months, depending on availability.

Move in & feel at home – without a long-term commitment.

Equipment & Features



Basic equipment

- Terrace
- Internet/Wifi
- Bedclothes
- Private toilet
- Parking on the road without time limit without any cost
- Iron & ironing board
- Hairdryer
- Garden
- Private washing machine
- Towels
- Garage
- Vacuum cleaner
- Cleaning utensils



Fireplace

- Sweden Stove



First supply

- Toilet paper
- Soap



Kitchen

- Private kitchen
- Glasses/Tableware
- Dishwasher
- Cooking utensils
- Espresso machine

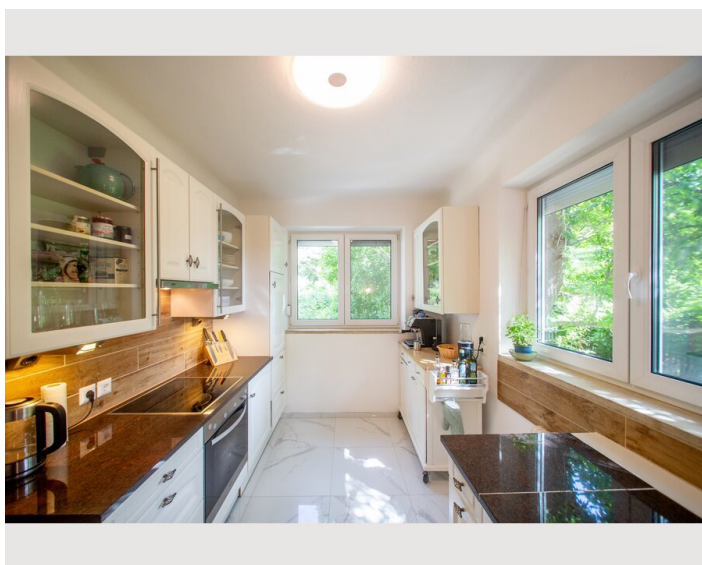
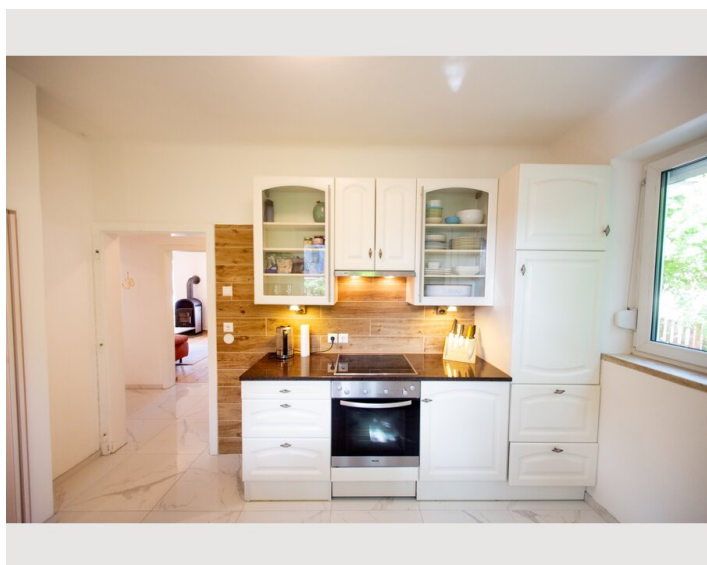
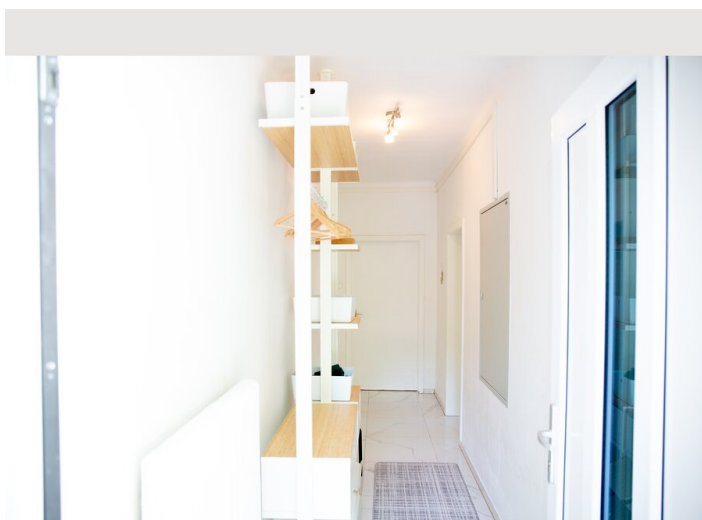
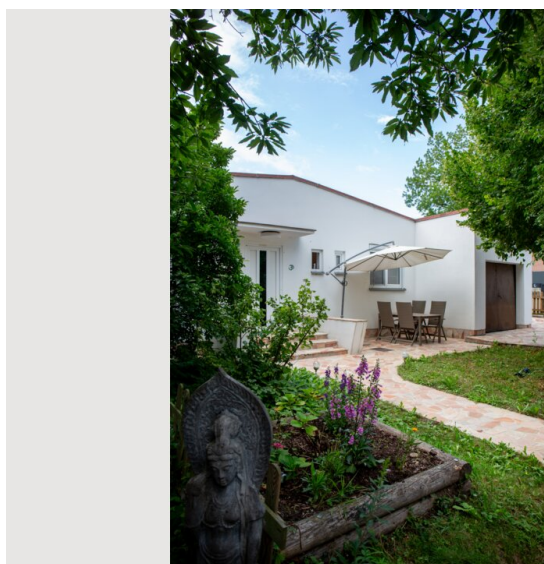
Informations

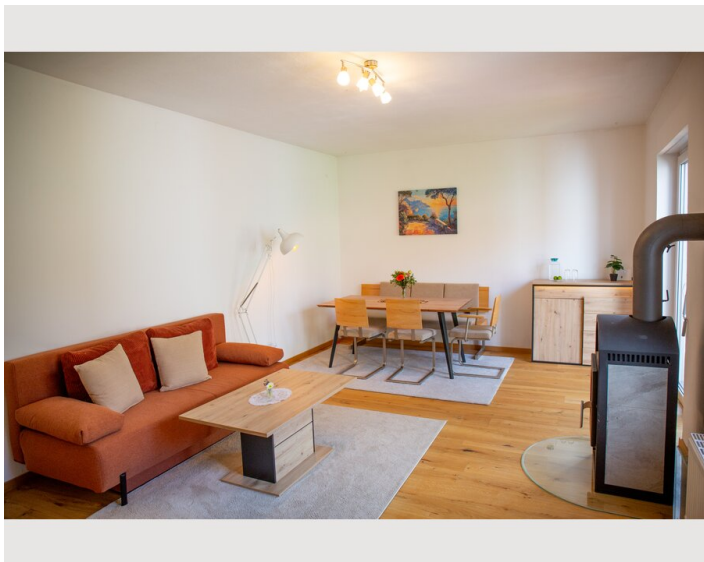
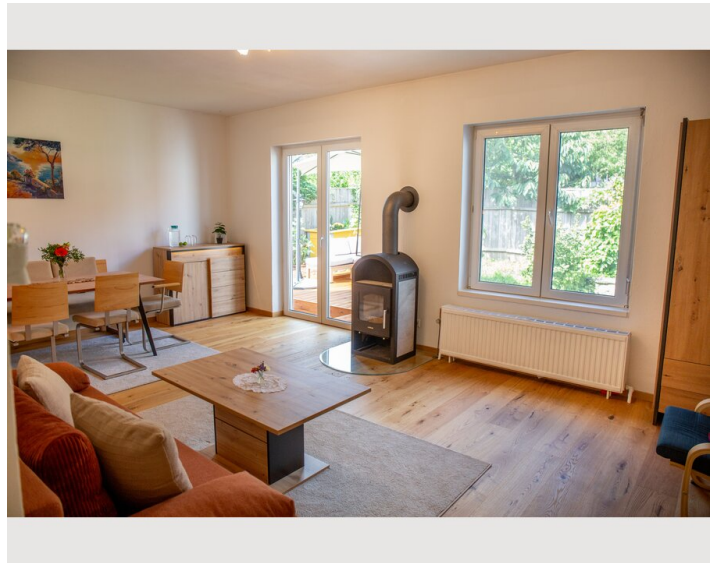
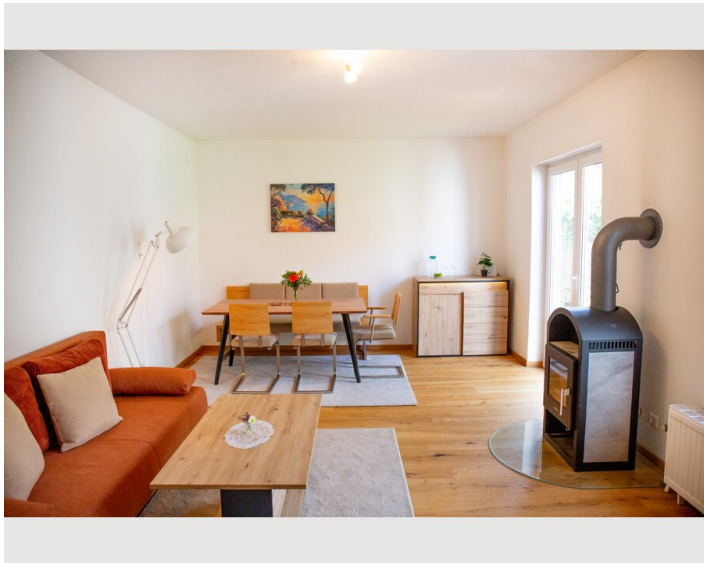
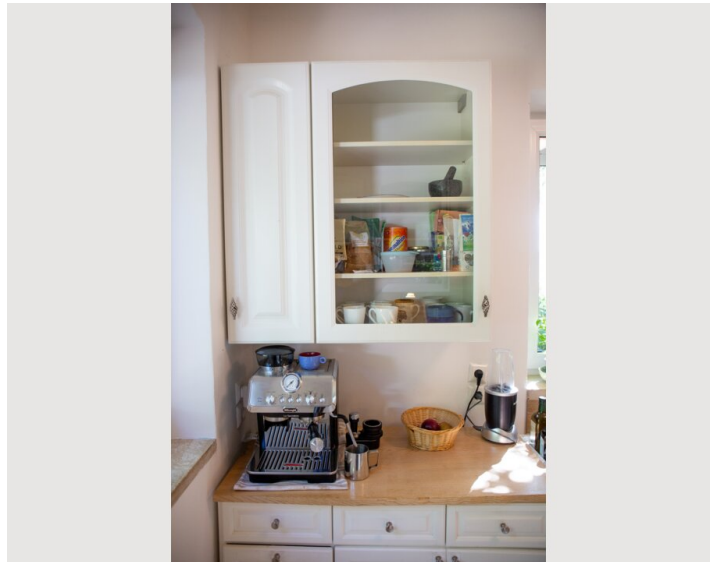
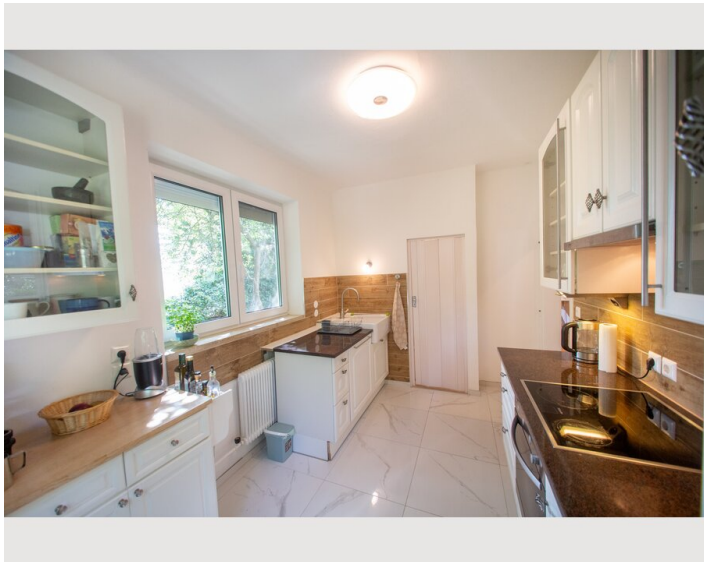
- Suitable for children
- Desk/Workplace
- Pets on request
- Smoking not allowed
- Private entrance
- Regular cleaning at extra cost

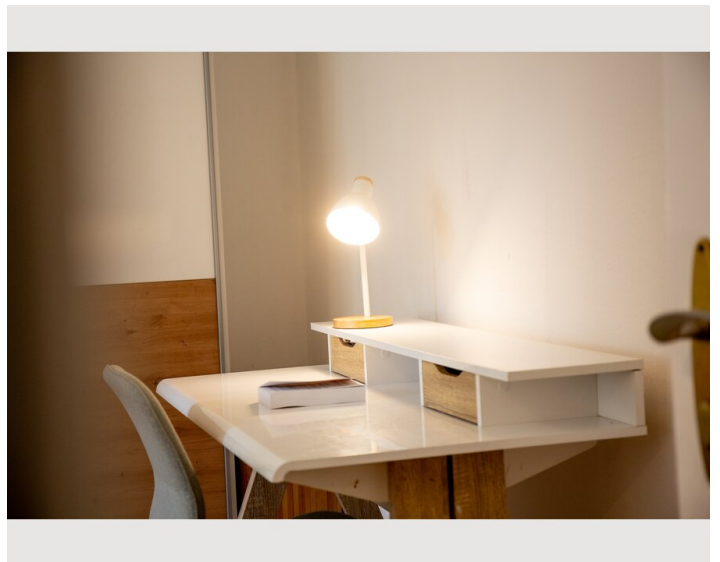
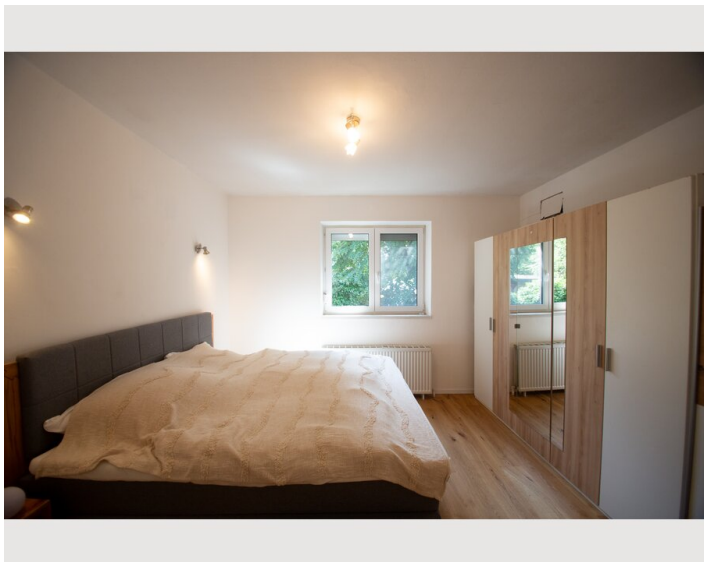
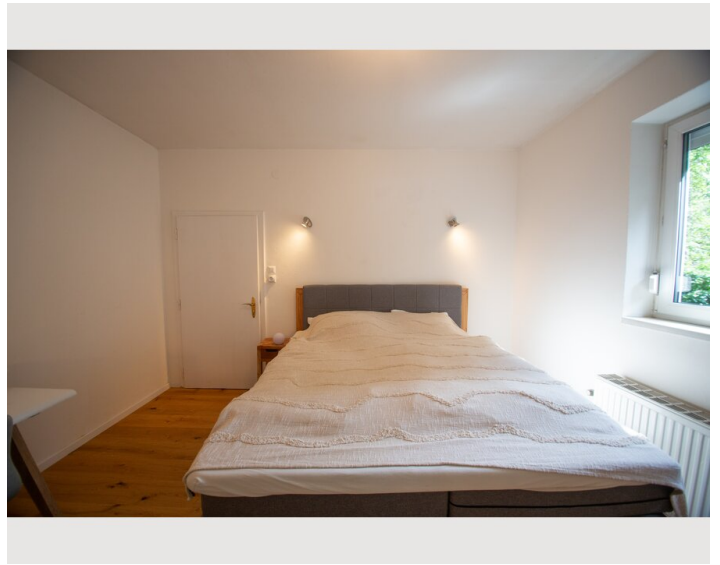
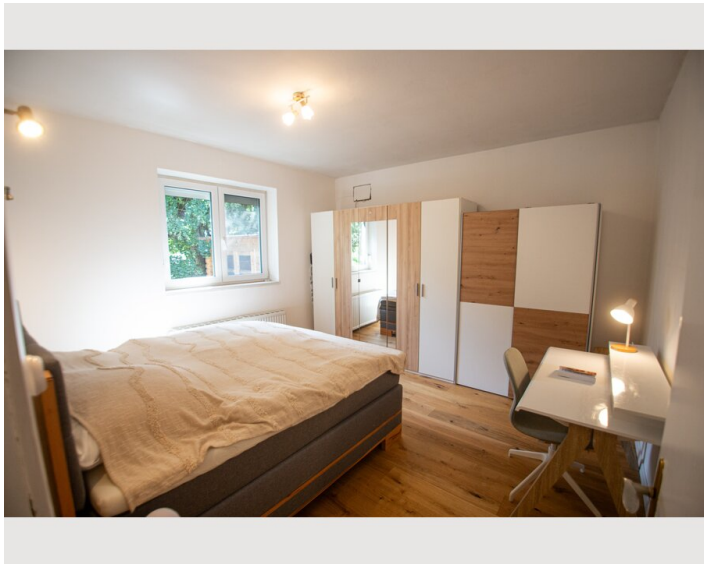
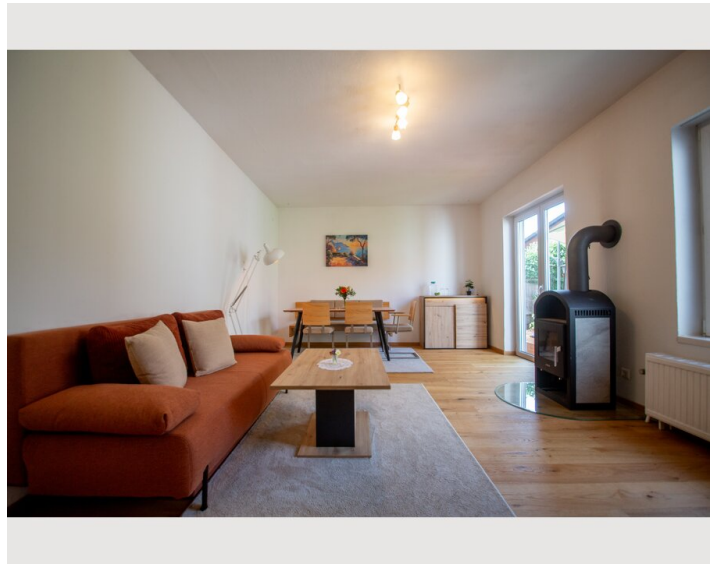
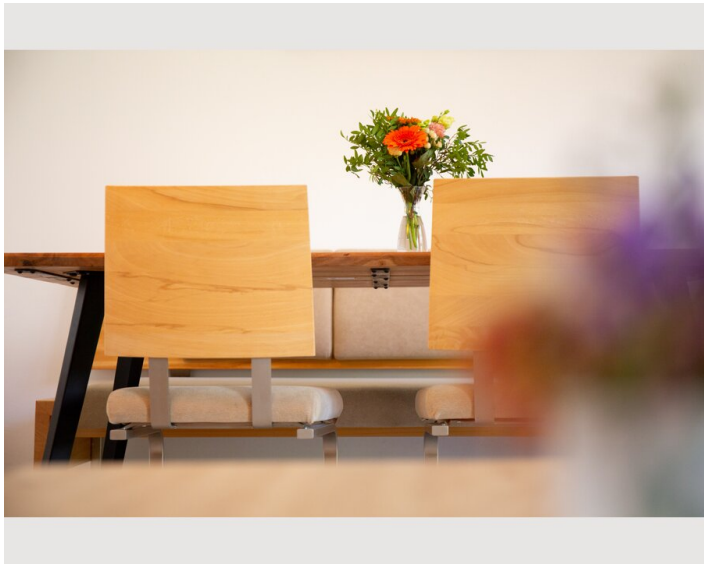
Additional services

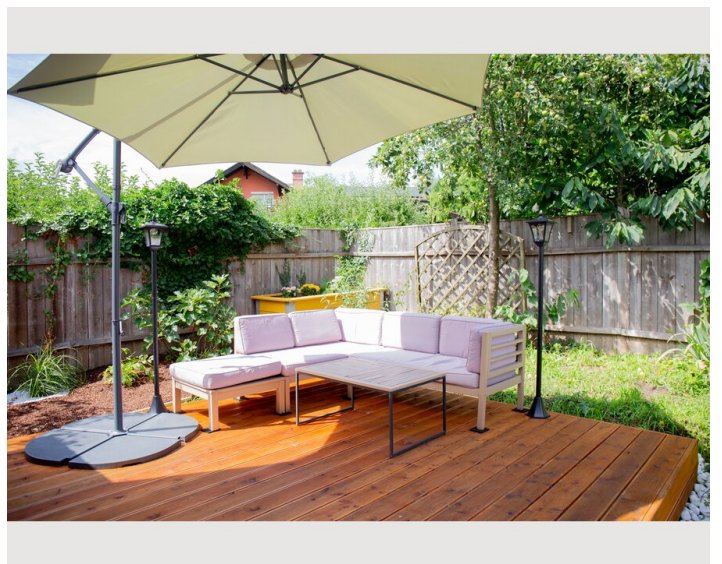
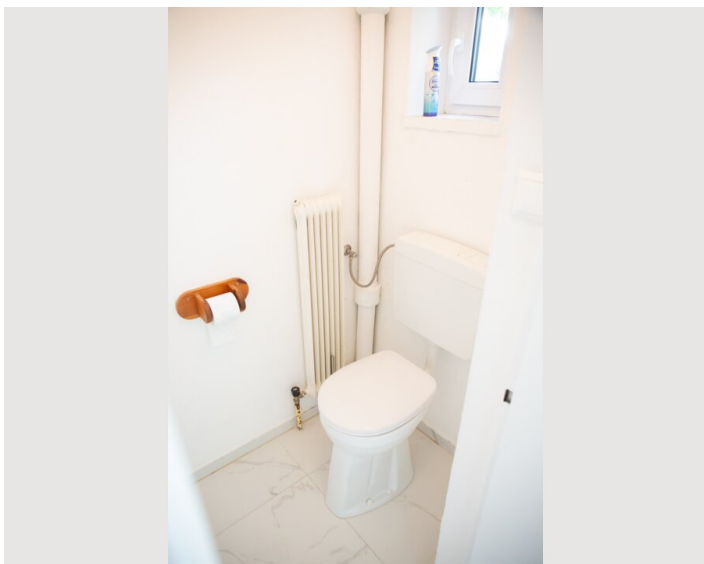
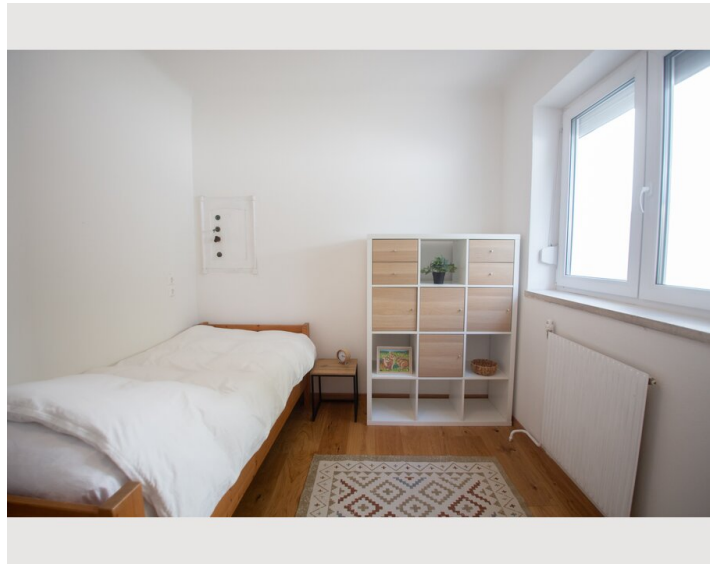
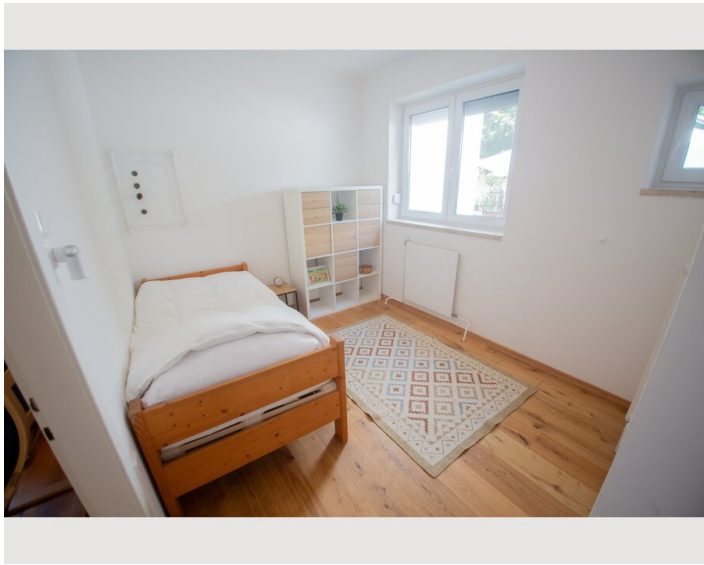
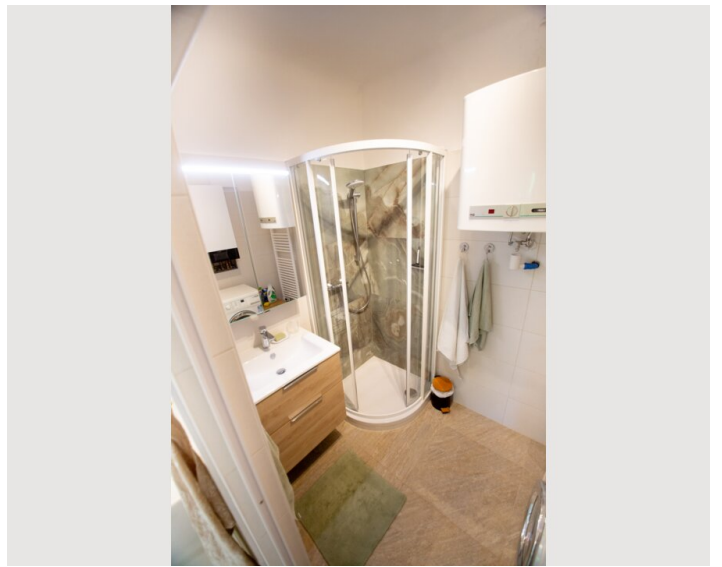
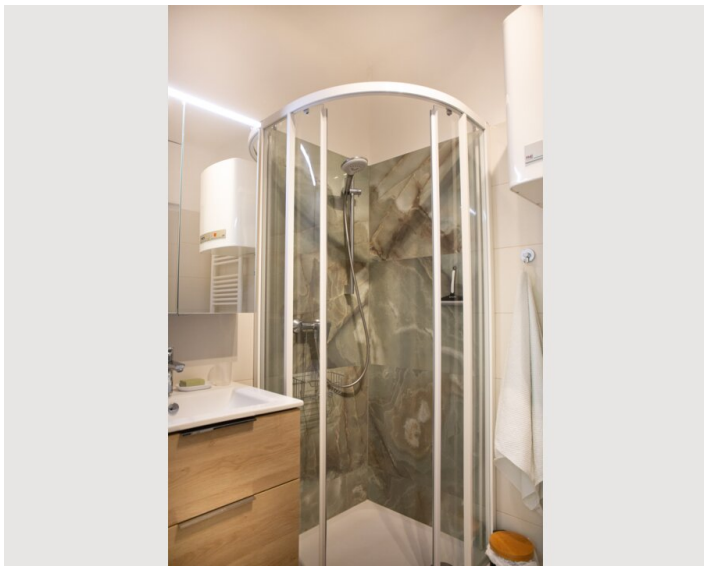
All prices are gross per month - billing is done directly with the lessor.

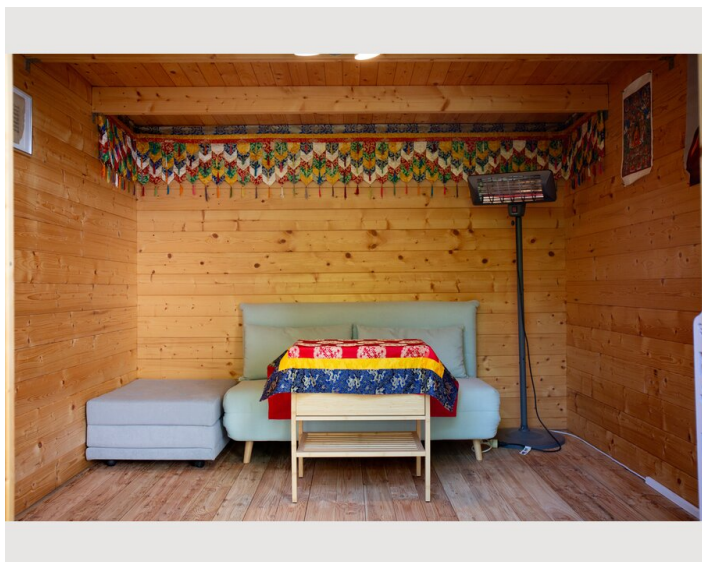
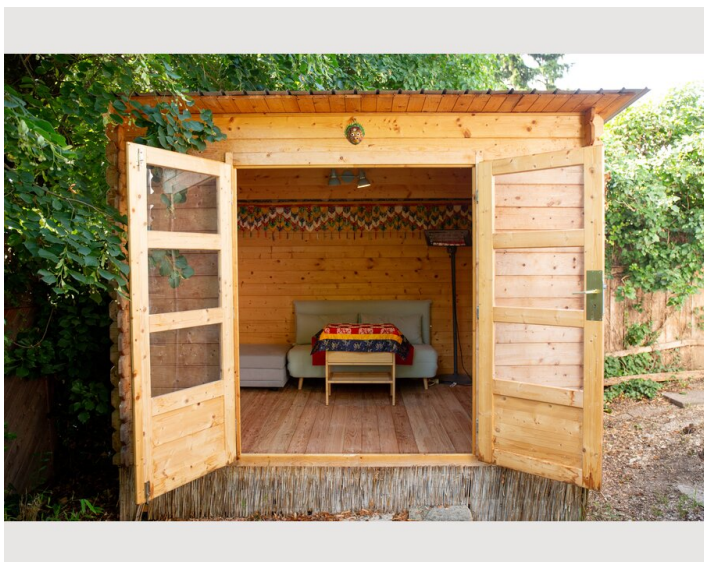
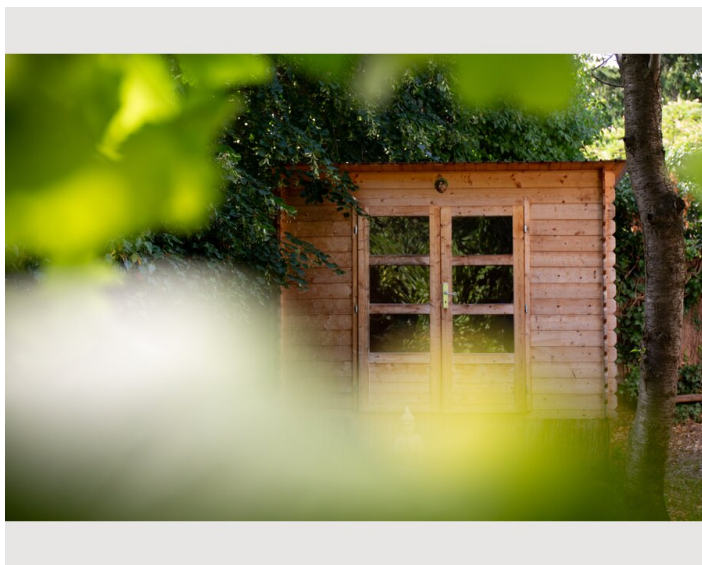
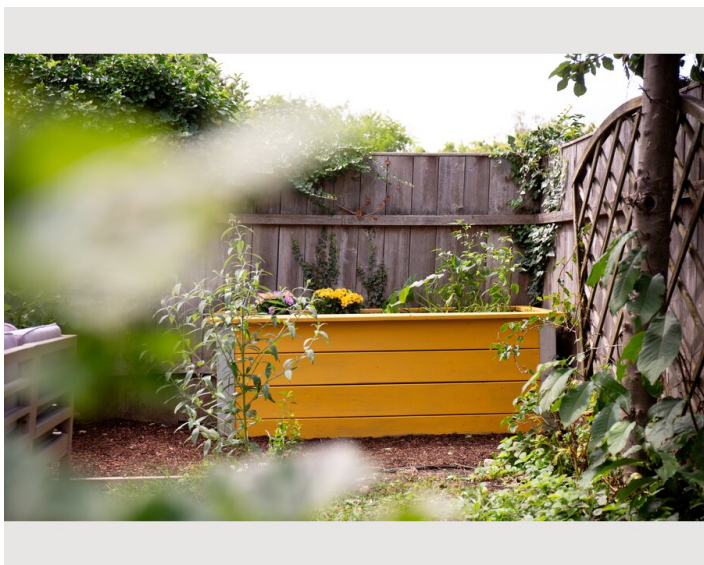
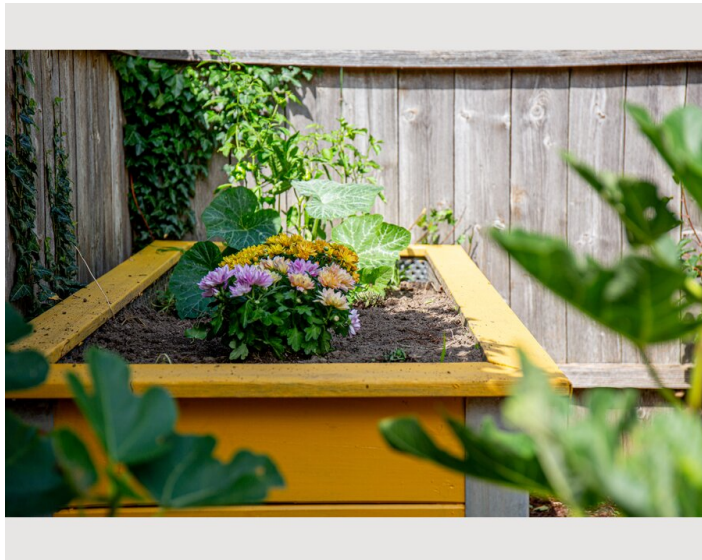
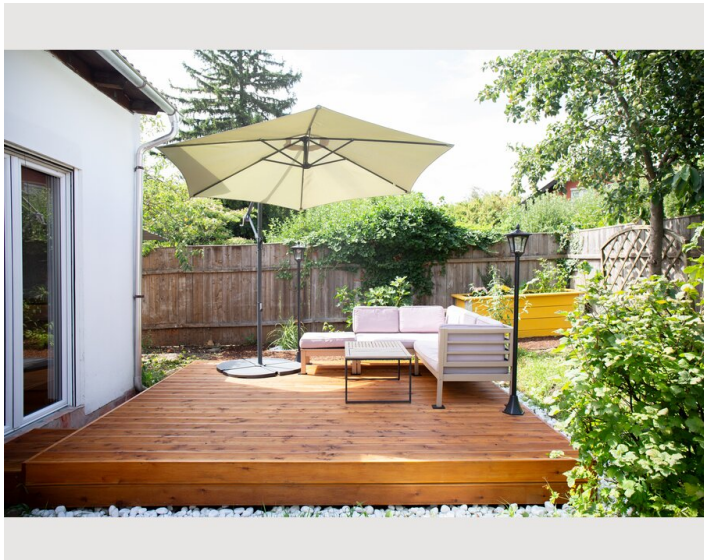
Picture gallery











Video

[Goto Video](#)



Infrastructure



Surroundings & Infrastructure

The location of the house in Neulengbach combines peace, nature, and excellent infrastructure – ideal for anyone who wants to live in a green setting while staying well connected for a few weeks or months.

Education & Leisure Activities

The immediate area offers numerous opportunities for children and teenagers, as well as for adults:

Neulengbach Elementary School – only about a 5-minute walk away

Two kindergartens nearby:

Akademie Kindergarten

Kindergarten in the town center

BORG Neulengbach (secondary school) with a focus on music and creativity

Leisure activities such as adventure gymnastics, karate, and music school programs

Sports & Nature

The surroundings invite you to recharge and stay active:

Direct access to the alley – ideal for cycling, walking, and jogging

Neulengbach Outdoor Pool – easily reachable by bike

Forest with cycling trail – about an 8-minute walk

Skate park – approx. 5 minutes by bike, 10 minutes on foot

Local Amenities & Services

Shops, weekly market, cafés, and restaurants in the center of Neulengbach

Neulengbach train station – good connections to Vienna and St. Pölten

General practitioner and veterinarian nearby

Additional services such as pharmacies, medical center, post office, banks, and more are conveniently accessible

Whether with family, alone, or as a couple – for work, creativity, or a relaxing break:

The location offers a pleasant balance between tranquility and practical connections, nature, and culture.

Location

