



*Studio apartment, Strass im Attergau*

## C2 Beautiful apartment

Object number: C2

[VIEW AND RENT ONLINE](#)

The apartment house Sagerer is located halfway between Mondsee and Attersee, in a small quiet side valley, in the middle of nature, nestled between Auerwaldbach, meadows and the edge of the forest.

<b>Period</b>	20/05/ - 20/06/2022
<b>Number of persons</b>	2
<b>Total incl. VAT.</b>	€ 680,13
<b>Security deposit</b>	€ 500,00



### Living space

25m<sup>2</sup>



### Maximum occupancy

2 Persons



### Complete accommodation <sup>?</sup>

1 private bathroom 1 Living-Sleepingroom



### 2. floor



### Check-in

15:00 - 20:00



### Check-out

07:00 - 10:00

## Sleeping options

### Living and sleeping



1x Double bed (min. 1,60 m x 2 m)

### Equipment features

#### Basic equipment

- Balcony
- Internet/Wifi
- Community washing machine
- Bedclothes
- Private toilet
- Vacuum cleaner
- Garden sharing
- TV
- Community dryer
- Towels
- Private parking space
- Hairdryer

#### Fireplace

- Charcoal grill

#### First supply

- Toilet paper
- Soap

#### Kitchen

- Private kitchen
- Glasses/Tableware
- Cooking utensils
- Filter coffee

### Informations

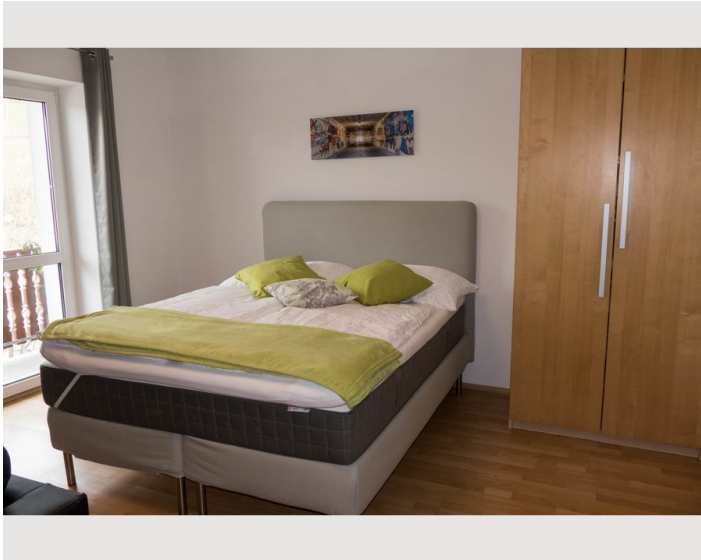
- Suitable for construction workers
- Smoking not allowed
- Regular cleaning at extra cost
- Suitable for children
- Pets forbidden
- Bicycle room free of charge

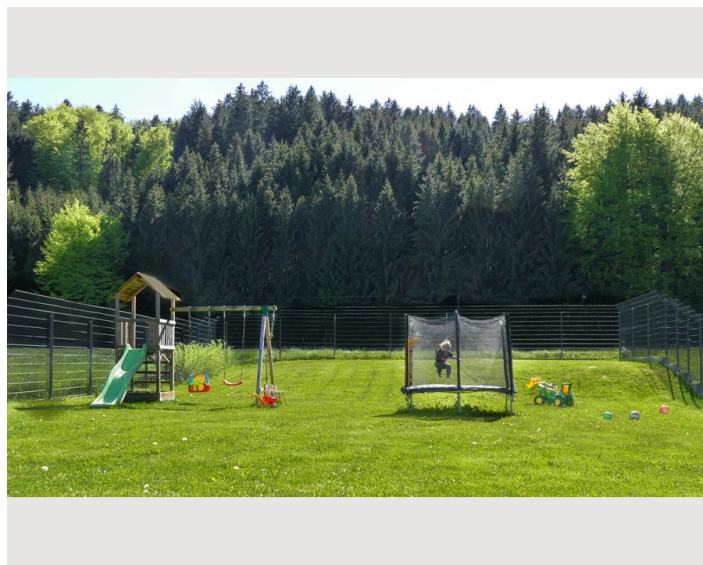
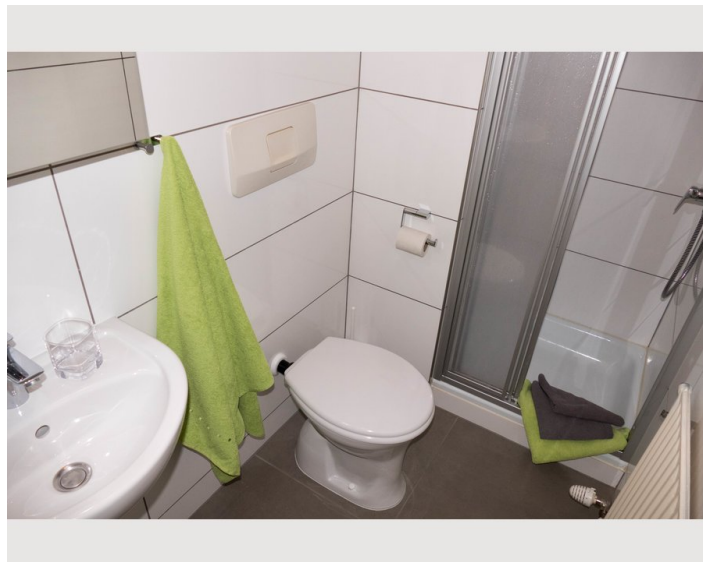
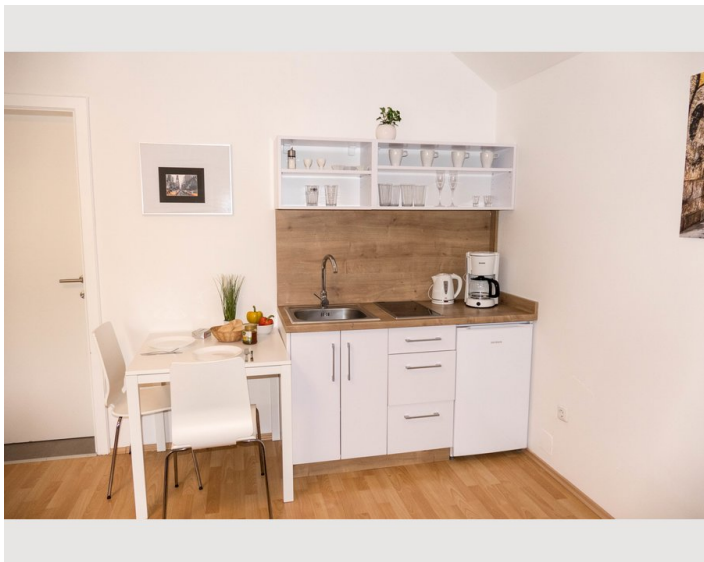
### Additional services

- Cleaning every 2 weeks (€ 40,00)

All prices are gross per month - billing is done directly with the lessor.

### Picture gallery





### Infrastructure

📍 3 minutes by car 3,5 km

🏠 5 minutes by car 3,9 km

🚶 13 minutes walk 1.1 km

🚗 7 minutes by car 4,6 km

🚗 36 minutes by car 50,9 km Salzburg

🚗 56 minutes by car 83 km Linz

## Location

