



4 ROOM APARTMENT AND MORE, 80995 MÜNCHEN

Bright 4-Room Apartment in Munich – Close to 3 Lakes

Object number: TVQR1

[View and rent online](#)

Period	06/12/2025 - 06/01/2026
Number of persons	2
Total incl. VAT.	€ 4.475,14
Security deposit	€ 3.200,00

Bright, furnished 4-room apartment with terrace & loggia in Munich-Feldmoching. 3 min to U2 (underground) & S1 (commuter train), 20 min to city center. Near lakes & Regatta Park. Fully equipped incl. home office, washing machine & dryer.



Living space

100m²



Maximum occupancy

6 Persons



Complete accommodation [?]

2 Private bathrooms 3 Separated bedrooms 1 Living-Sleepingroom



1. floor

Elevator available



Check-in

16:00 - 20:00 Clock



Check-out

08:00 - 11:00 Clock

Sleeping options

Bedroom 1



1x Double bed (1,80 m x 2 m)

Bedroom 2



1x Single bed



1x Sofa bed (2 persons)

Bedroom 3



1x Sofa bed (2 persons)

Living and sleeping



1x Sofa bed (2 persons)

Descripton of accommodation

Bright, Furnished 4-Room Apartment with Terrace, Loggia and Nearby Lakes – Short-Term Rental in Munich-Feldmoching

Spacious and light-filled 4-room apartment on the first floor of a well-maintained building with elevator, located in the green and quiet district of Feldmoching. The apartment is fully furnished and well-equipped, ideal for short-term rentals from 1 to 6 months – perfect for business stays, families in transition, or temporary living in Munich.

Apartment Features:

Three bedrooms, including a flexible room with sofa bed, two desks with monitors, and storage – ideal as a home office or guest room

Generous living and dining area with access to the south-facing terrace

Additional loggia with southwest orientation – perfect for sunny afternoons

Two toilets, one with a bathtub

Fully equipped kitchen with everything needed for daily life

Washing machine and dryer

Wi-Fi is of course available

First floor with elevator – barrier-reduced and easily accessible

Location & Surroundings:

Only a 3-minute walk to U2 (subway) and S1 (commuter train) at Feldmoching – with direct connections: approx. 20 minutes to the city center, and approx. 25 minutes to the airport.

Three popular lakes – Feldmochinger See, Fasaneriesee, and Lerchenauer See – are all reachable in about 5 minutes by bike. The Olympic Regatta Course with Regatta Park Lake is also nearby (about 12 minutes by bike) and offers a wide range of outdoor and sports activities.

The Olympic Park is also easily accessible and offers year-round sports, recreation, and cultural events.

Local Amenities & Infrastructure:

Numerous shopping options nearby: Rewe, Aldi, Lidl, Edeka, Kaufland, and more

Schools, kindergartens, and playgrounds within walking distance – very family-friendly

Quiet, green location with a semi-rural feel, yet well connected to the city

Summary:

This apartment combines comfort, a well-designed layout, full furnishings, and an ideal location between nature and the city. Thanks to reliable Wi-Fi, flexible rental terms (1–6 months), and excellent public transport access, it's particularly attractive for anyone needing temporary accommodation in Munich – for business or personal reasons.

Equipment & Features



Basic equipment

- Terrace
- Internet/Wifi
- TV
- Private washing machine
- Private dryer
- Bedclothes
- Private toilet
- Garage
- Aircondition
- Iron & ironing board
- Hairdryer
- Loggia
- Music system/docking station
- Printer
- Community washing machine
- Community dryer
- Towels
- Private parking space
- Parking on the road without time limit without any cost
- Vacuum cleaner
- Cleaning utensils



Fireplace

- Gas grill



First supply

- Toilet paper
- Soap



Kitchen

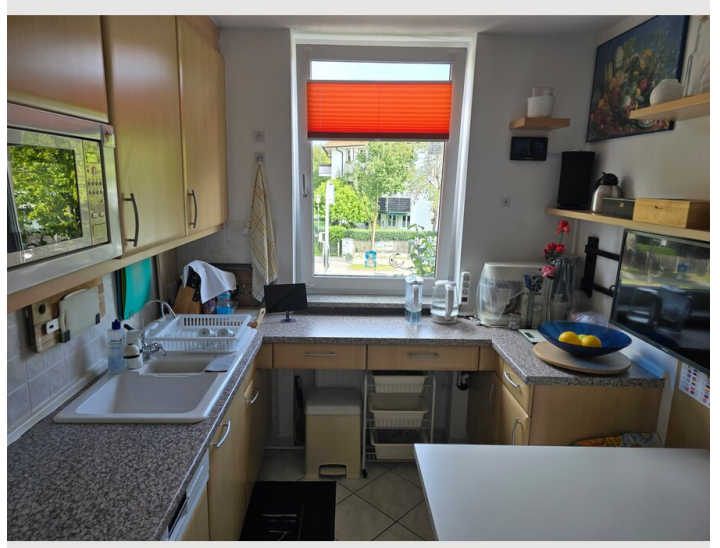
- Private kitchen
- Glasses/Tableware
- Filter coffee
- Microwave
- Cooking utensils
- Espresso machine
- Dishwasher

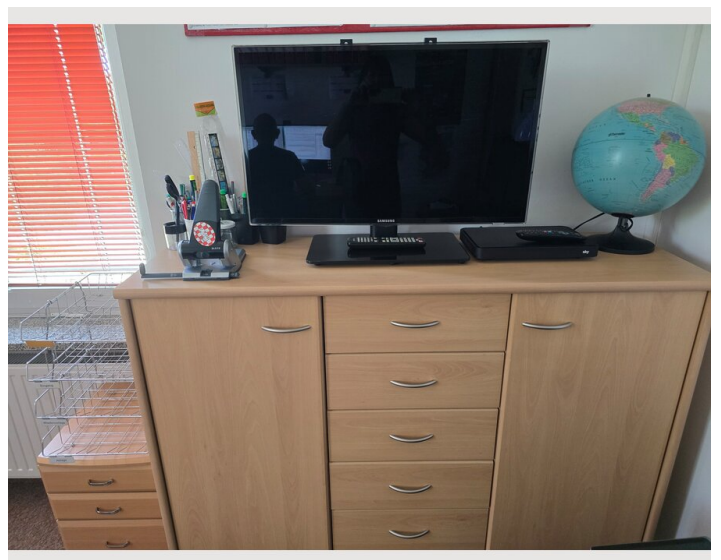
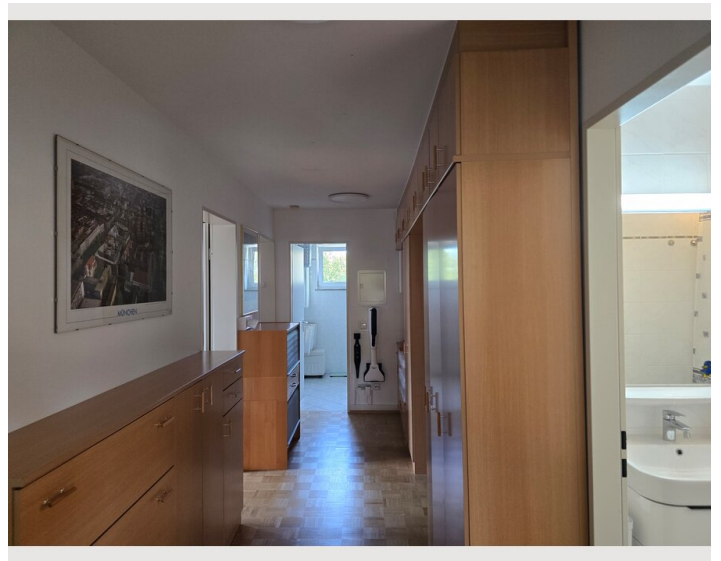
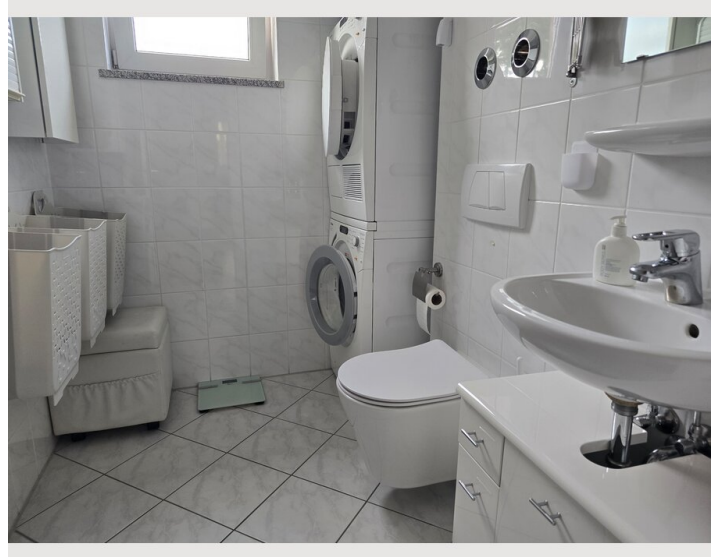
Informations

- Smoking not allowed
- Desk/Workplace
- Bicycle room free of charge
- Free short-term parking zone
- Pets forbidden

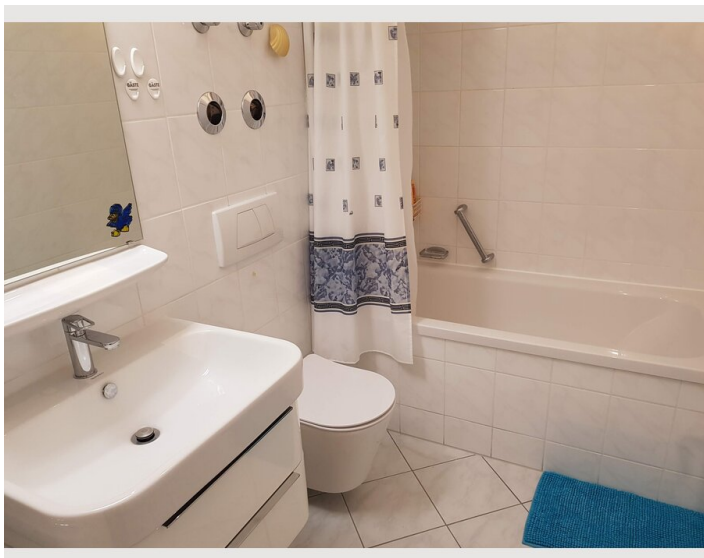
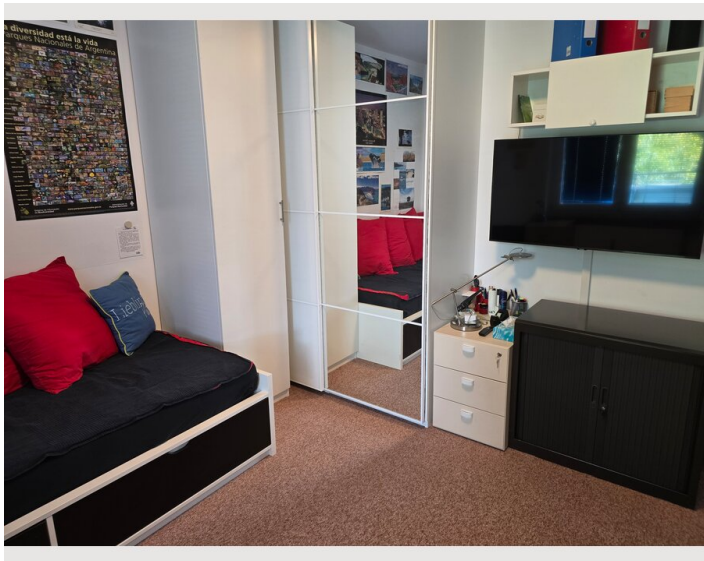
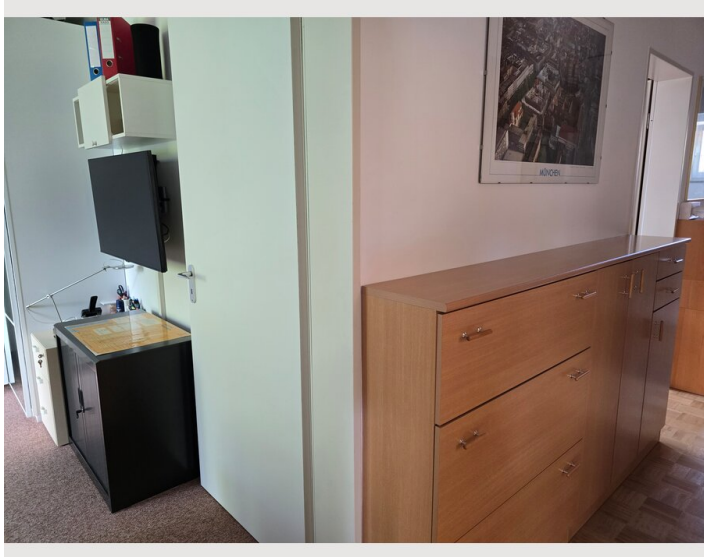
Picture gallery



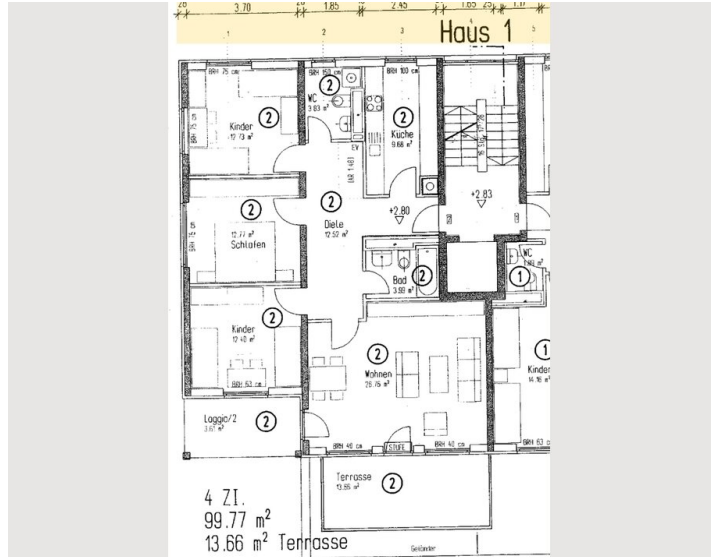
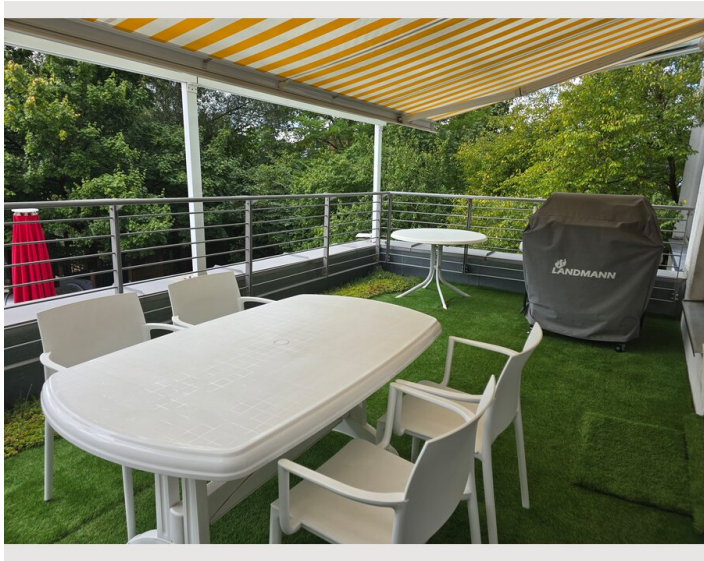


















Infrastructure

- | | |
|---|---|
|  Bus stop: approx. 2–3 minutes on foot |  Munich Airport: approx. 25 minutes with the S1 (direct connection) |
|  Train & subway station (Feldmoching – U2 & S1): approx. 3–4 minutes on foot |  Nearest supermarket (e.g. Rewe, Aldi): approx. 4–6 minutes on foot |
|  City center (Marienplatz / Hauptbahnhof): approx. 20–25 minutes by U-Bahn or S-Bahn |  Other major supermarkets (e.g. Edeka, Lidl, Kaufland, dm, Rossmann): approx. 10–15 minutes – accessible by bike, car, or public transport |

Local Amenities & Infrastructure (expanded):

Shopping: Numerous supermarkets and everyday stores are located nearby, including Rewe, Edeka, Aldi, Lidl, Kaufland, as well as local bakeries, pharmacies, and drugstores such as dm and Rossmann.

Dining: A variety of restaurants, cafés, beer gardens, and takeaways are within easy reach – offering everything from traditional Bavarian cuisine to international options.

Healthcare: Several general practitioners, specialists, pharmacies, and nearby clinics are available. Larger hospitals such as Helios Klinik München-Perlach or Klinikum Dritter Orden in Nymphenburg can be reached easily by public transport or car.

Public transportation: The U-Bahn line U2 and S-Bahn line S1 are only a 3-minute walk away, providing direct access to Munich city center, the main train station, and Munich Airport (approx. 25 minutes). Additional bus lines connect to nearby districts and shopping areas.

Education & childcare: Several kindergartens, daycare centers, and schools (primary and secondary) are located in the neighborhood – many within walking distance. A great environment for families.

Recreation & nature: In addition to the three nearby lakes (Feldmochinger See, Fasaneriesee, Lerchenauer See) and the Olympic Regatta Course with Regatta Park Lake, the Olympic Park offers year-round sports, concerts, cultural events, and green space for walking and relaxing.

Sports & fitness: The area features sports clubs, fitness studios, bike paths, and running trails – ideal for active living close to nature.

Location

