



2 ROOM APARTMENT, 1120 VIENNA

Apartment "Art" - quiet and favourably located

Object number: HOFG1

[View and rent online](#)

Period	09/12/2025 - 09/01/2026
Number of persons	2
Total incl. VAT.	€ 1.488,54
Security deposit	€ 1.100,00

The fully equipped 2-room apartment, well connected to the Vienna transport network, offers everything for a comfortable temporary stay. The situation in the leafy inner courtyard allows for a relaxing time out in almost village-like peace.



Living space

43m²



Maximum occupancy

4 Persons



Complete accommodation [?]

1 Private bathroom 1 Separated bedroom 1 Living-Sleepingroom



Ground floor



Check-in

10:00 - 19:00 Clock



Check-out

08:00 - 12:00 Clock

Sleeping options

Sleeping room



1x Double bed (1,80 m x 2 m)

Living and sleeping



1x Sofa bed (2 persons)

Descripton of accommodation

The 2018 completely renovated apartment with two rooms in a former old Viennese coachman's house (around 1830) offers peace and relaxation. It is located on the ground floor (one single step) in a small green courtyard, which may also be used (shared space).

The foyer leads to a separate toilet, to the bathroom (with shower cubicle and washing machine) and to the kitchen-living room. There you will find a fully equipped kitchen with dishwasher, an extendable dining table for up to 4 persons, which can also be used as a workplace, as well as a seating area with a sofa bed, which provides sleeping space for two persons (160 x 200 cm). A flat-screen TV, an Internet radio and W-LAN provide entertainment, information and communication. The second room is furnished as a bedroom. There is a large double bed (180 cm wide) for first-class sleeping comfort and a large wardrobe with enough storage space even for a longer stay.

Despite the convenient location, you will find an almost village-like peace and quiet in the apartment.

On the walls hang paintings by Austrian Art Brut artists coming from Gugging.

!! Important information for everyone, but especially for citizens from countries outside the European Union: Official registration is only possible as a secondary residence - no registration for main residence !!

Equipment & Features



Basic equipment

- Garden sharing
- Music system/docking station
- Private washing machine
- Towels
- Vacuum cleaner
- Cleaning utensils
- Internet/Wifi
- TV
- Bedclothes
- Private toilet
- Iron & ironing board
- Hairdryer



First supply

- Toilet paper
- Soap
- shampoo
- Nespresso capsules



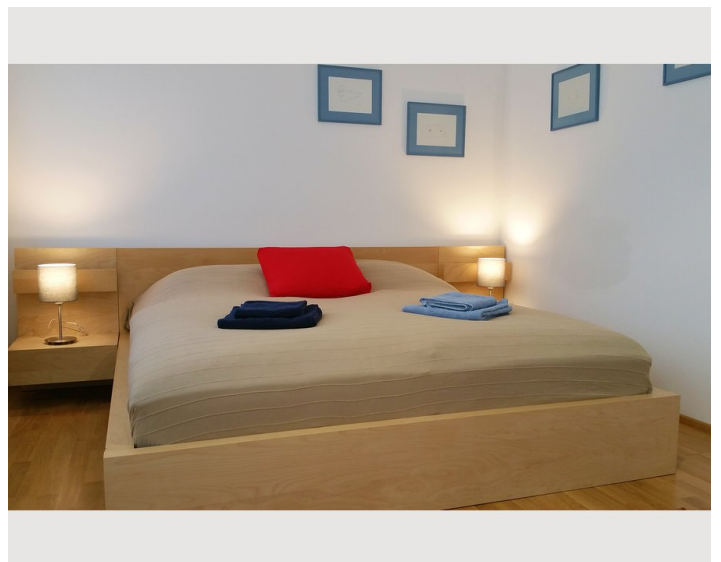
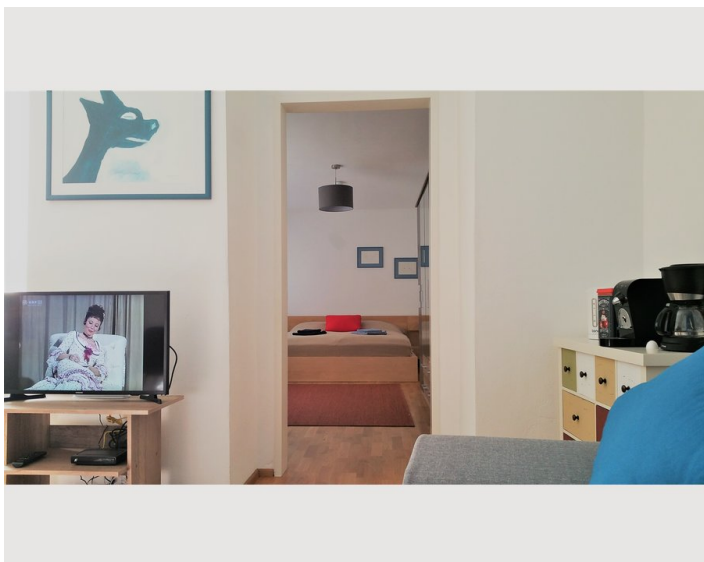
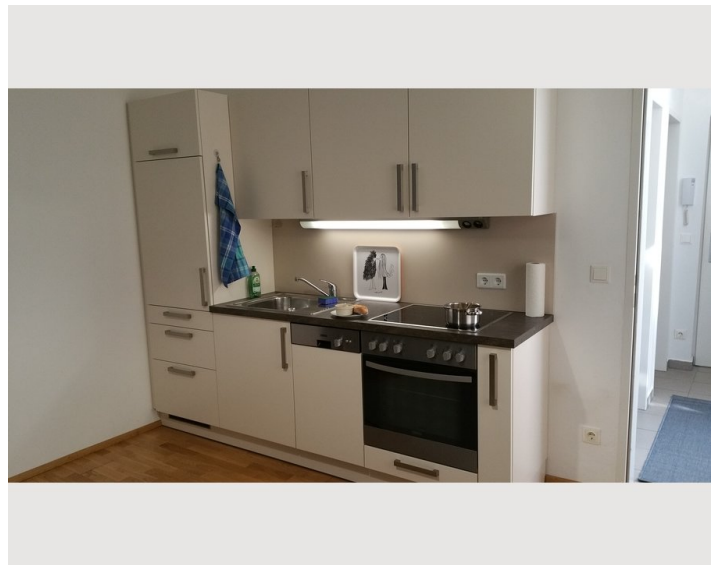
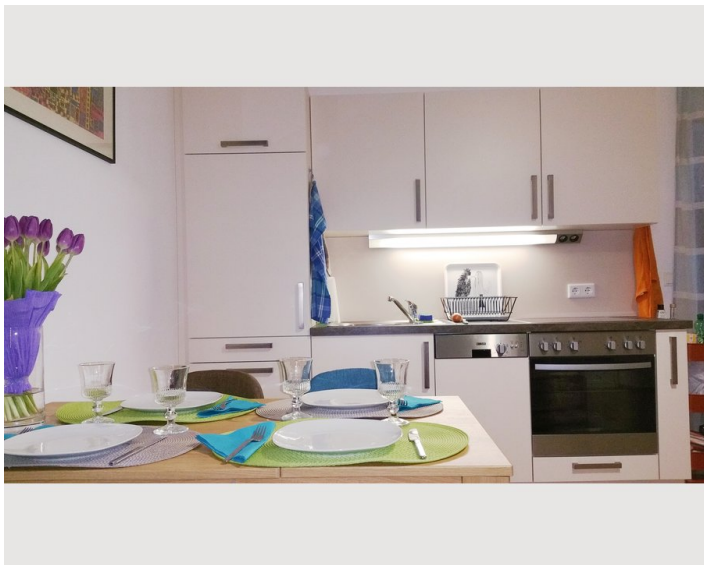
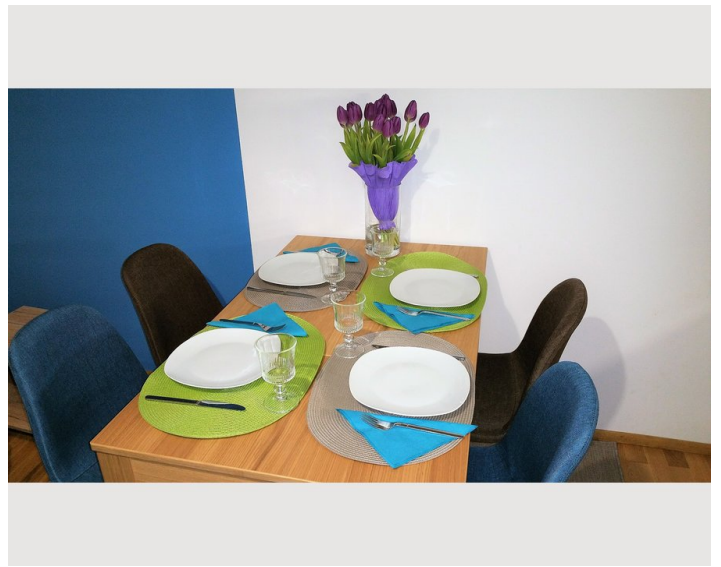
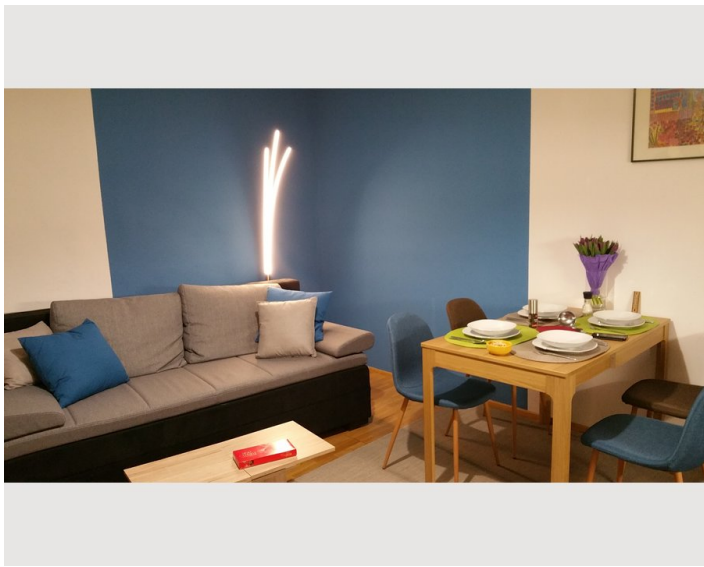
Kitchen

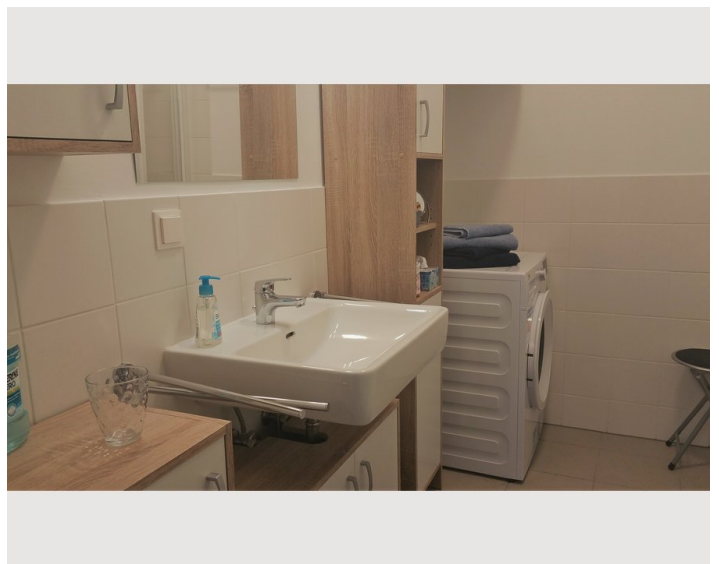
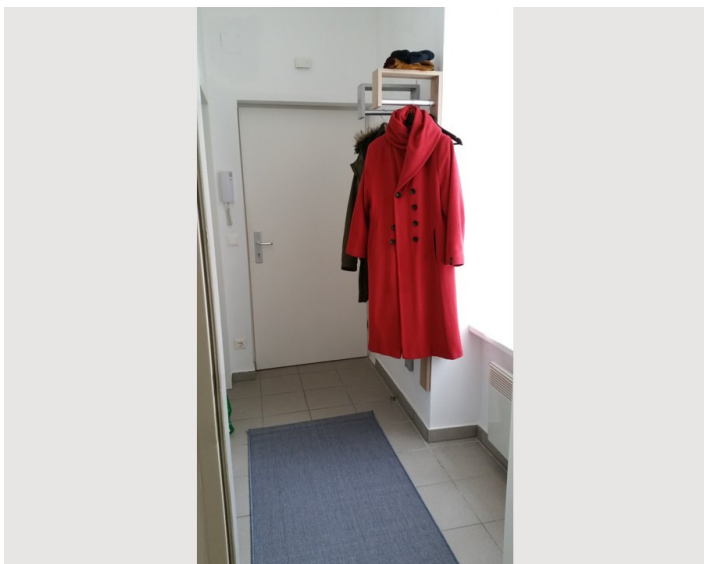
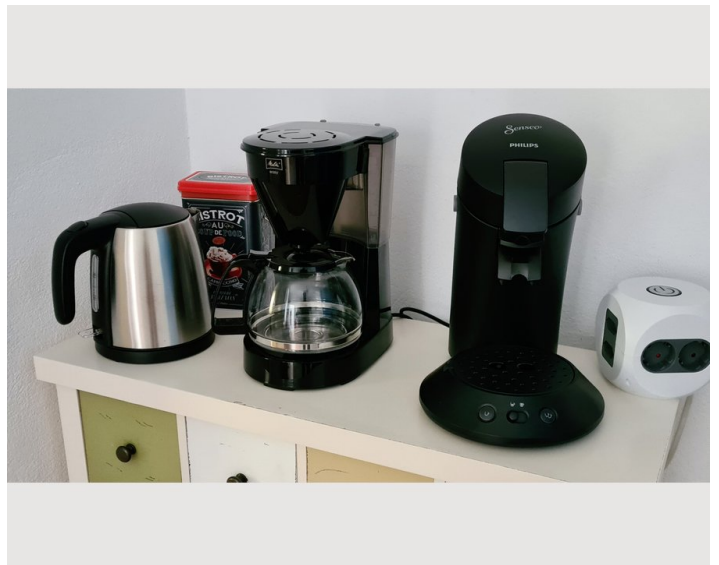
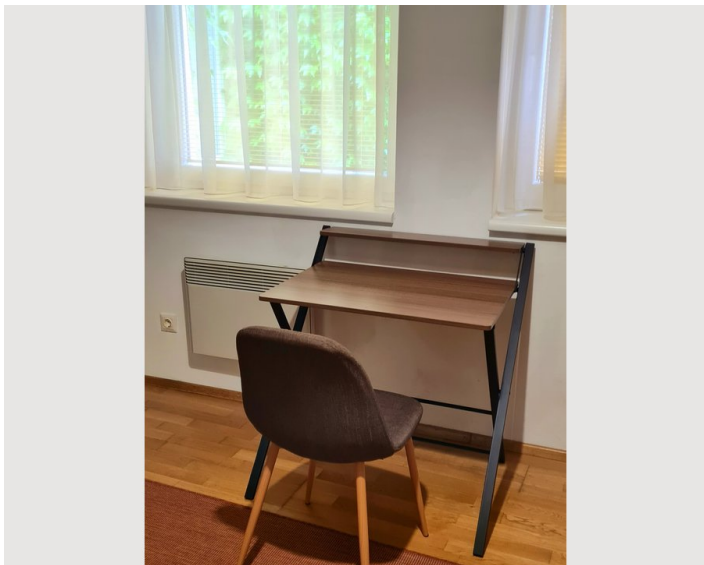
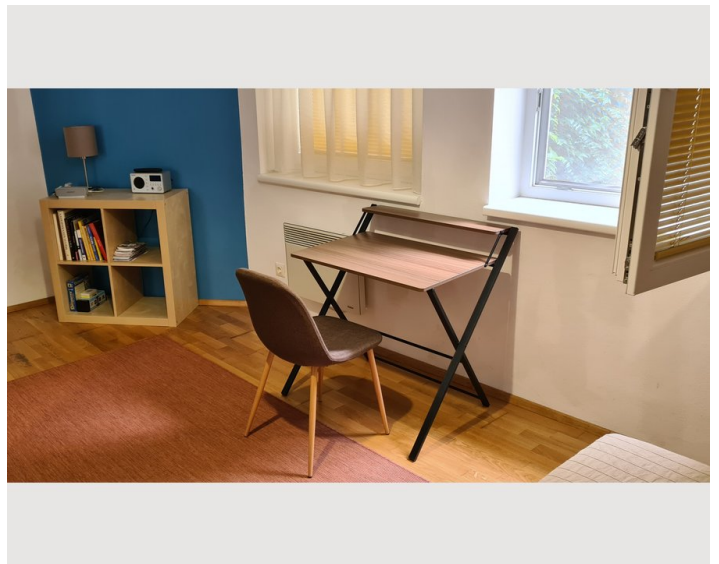
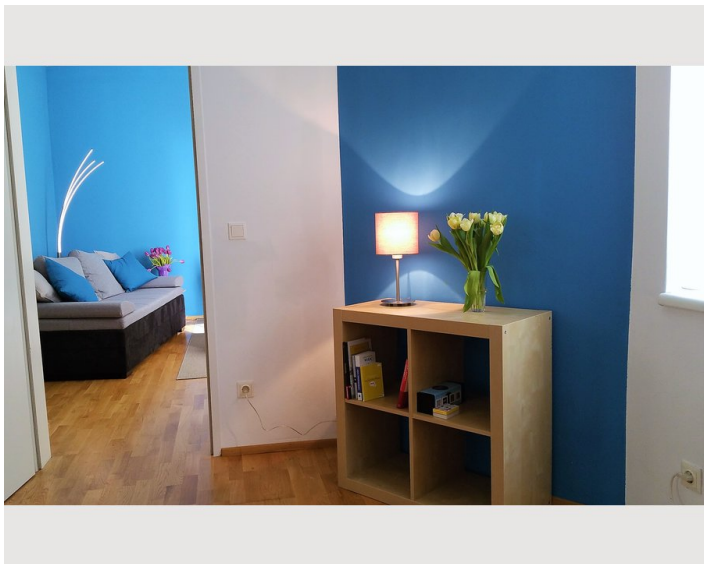
- Private kitchen
- Glasses/Tableware
- Filter coffee
- Cooking utensils
- Espresso machine
- Dishwasher

Informations

- Not suitable for children
- Short-term parking zone subject to a charge
- Private entrance
- Regular cleaning free of charge
- Smoking not allowed
- Desk/Workplace
- Pets forbidden
- Bicycle room free of charge

Picture gallery

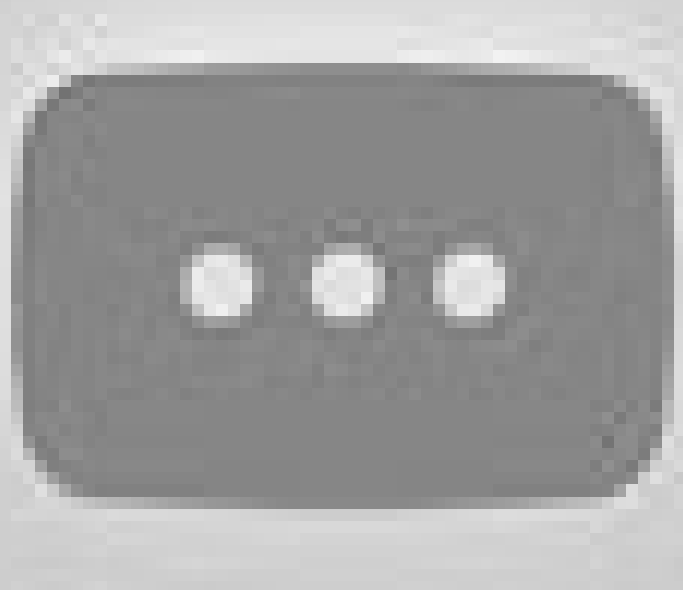






Video

[Goto Video](#)



Infrastructure



International Train Station Meidling, Metro, Tram, Bus, 4 minutes walk



Direct bus and tram connections to the center, about 16 minutes



Bus stop, 3 minutes walk



Market and supermarkets in walking distance

Shopping facilities are available at the multicoloured Meidlinger market and in various supermarkets nearby. Meidlinger Hauptstraße (5 minutes) is a pedestrian zone where many shops can be found.

Nearby are recreational facilities such as swimming pools or the park of Schönbrunn Palace with probably the most beautiful running track in Vienna.

In a walking distance of a few minutes you will find nice breakfast facilities, in a further radius (10-12 minutes) you will find traditional Viennese restaurants, international cuisine and also some upscale restaurants (information booklet is available in the apartment).

In only four minutes on the walk you are at the station Meidling, there you have:

- direct connections to the airport Vienna (approx. 30 min.)
- Connection to all long-distance trains (Railjet, ICE)
- the subway U6
- the express line
- several tram lines that lead directly to the city centre (approx. 15-20 min.)
- a taxi rank

The entire district is a short-term parking zone on weekdays (subject to charges). If you are travelling by car, we recommend the parking garage Arcade, which is about 500 m away (discounted monthly tickets) or the parking garage Meidling (discounted weekly, two-weekly and monthly tickets).

We will gladly help you with your arrival, give you useful recommendations for your stay and help you with the organisation (transfer to the airport for example).

Cyclists are welcome. You can park and lock up your own bikes in the roofed entrance of the house.

