

STUDIO APARTMENT, 1100 VIENNA

## Studio Apartment next Main Train Station

Object number: SCHG1

[View and rent online](#)

<b>Period</b>	06/12/2025 - 06/01/2026
<b>Number of persons</b>	2
<b>Total</b> incl. VAT.	€ 1.645,88
Security deposit	€ 1.300,00

The temporary apartment is located on the 3rd floor of a Wilhelminian style house and this is in a small quiet side street near the park and green areas.



### Living space

32m²



### Maximum occupancy

3 Persons



### Complete accommodation <sup>?</sup>

1 Private bathroom 1 Living-Sleepingroom



### 3. floor



### Check-in

12:00 - 22:00 Clock



### Check-out

07:00 - 10:00 Clock

## Sleeping options

### Living and sleeping



1x Double bed (1,80 m x 2 m)



1x Sofa bed (1 person)

## Description of accommodation

The apartment offers you a fully equipped kitchenette and free WiFi. It is only a 5-minute walk from the nearest tram stop and a 10-minute tram ride from the Vienna State Opera.

The modern studio apartment has parquet floors, a flat-screen satellite TV and a washing machine in a separate storage room for shared use.

The Favoritenstraße shopping street with numerous shops, restaurants and pubs is a 10-minute walk away. There is also the Keplerplatz underground station on line U1. Line 14A stops just 100 meters from the apartments. Tram line 1 takes you directly from the Matzleinsdorfer Platz stop to the center of Vienna.

## Equipment & Features



### Basic equipment

- Internet/Wifi
- Community washing machine
- Towels
- Vacuum cleaner
- Hairdryer
- TV
- Bedclothes
- Private toilet
- Iron & ironing board



### First supply

- Toilet paper
- Soap



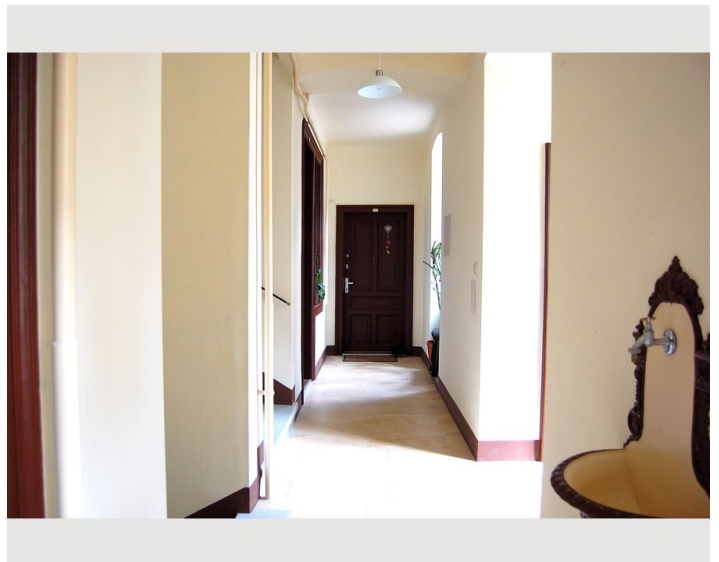
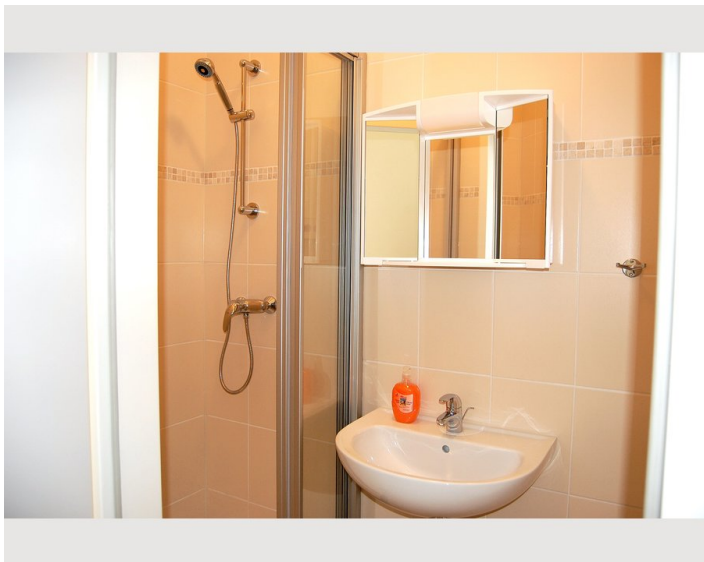
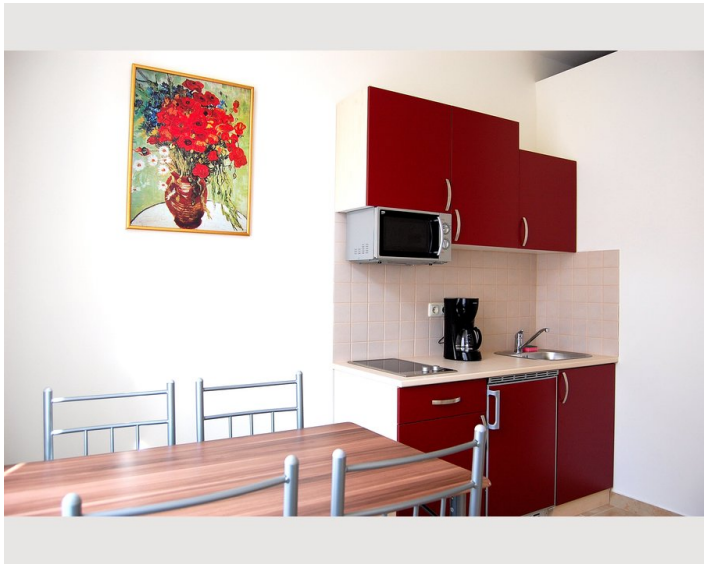
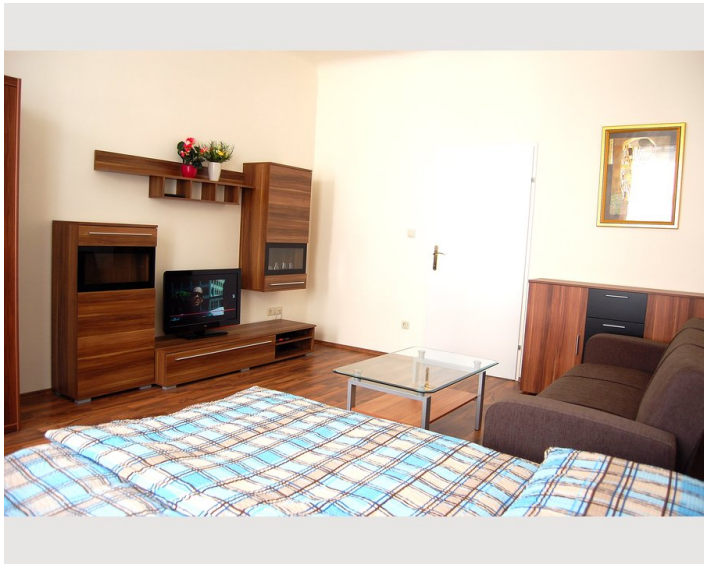
### Kitchen

- Private kitchen
- Glasses/Tableware
- Microwave
- Cooking utensils
- Filter coffee

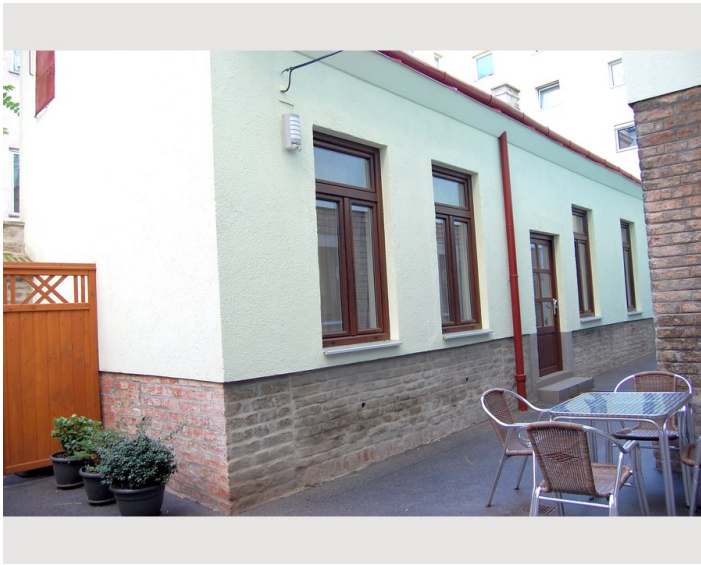
## Informations

- Suitable for construction workers
- Smoking not allowed
- Pets on request
- Suitable for children
- Short-term parking zone subject to a charge


## Picture gallery










### Infrastructure

 in 100, Bus 14A

 in 200m Pennymarket and Aldi

 Main Train Station with the bus 14A

 Tram 61 and U1 to the city center

 with the train from the Matzleindorferplatz to the Airport

---

The next Supermarket is in 200m on the main street.

## Location

