



2 ROOM APARTMENT, 6130 SCHWAZ, TIROL

VINTAGE APARTMENT / SILBERSTADT SCHWAZ

Object number: LOEM1

[View and rent online](#)

Period	21/12/2025 - 21/01/2026
Number of persons	2
Total incl. VAT.	€ 1.903,18
Security deposit	€ 1.300,00

Temporary living in a former beauty saloon with individual retrostyle



Living space

90m²



Maximum occupancy

2 Persons



Complete accommodation [?]

1 Private bathroom 1 Separated bedroom



2. floor

Elevator available



Check-in

09:00 - 19:00 Clock



Check-out

09:00 - 19:00 Clock

Sleeping options

Sleeping room



1x Double bed (1,80 m x 2 m)

Descripton of accommodation

Comprises a full equipped kitchen (furnishing and electrical equipment), a big living room (55m²) with dining area (with TV, Wifi, bluetooth loudspeaker, sofa couch), a bathroom with toilet, 1 bedrooms with kingsize double bed, a little wooden loggia balcony with washing machine and a big entrance with wardrobe. Additional room with single bed and toilet could be rent and/or underground parking space could be rent on request

Equipment & Features



Basic equipment

- Balcony
- Music system/docking station
- Private washing machine
- Towels
- Vacuum cleaner
- Cleaning utensils
- Internet/Wifi
- TV
- Bedclothes
- Private toilet
- Iron & ironing board
- Hairdryer



First supply

- Toilet paper
- Nespresso capsules
- Soap



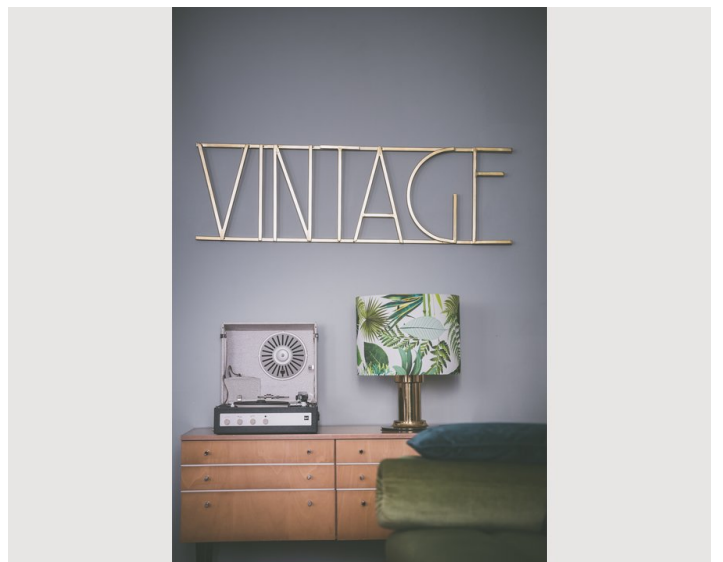
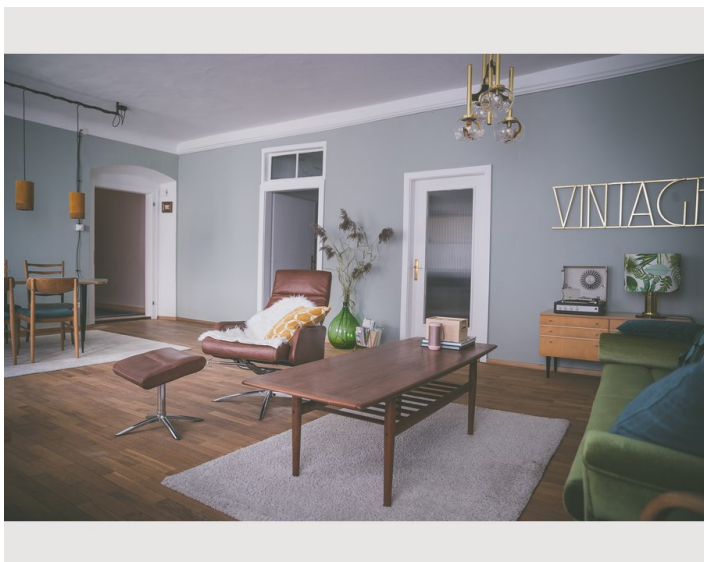
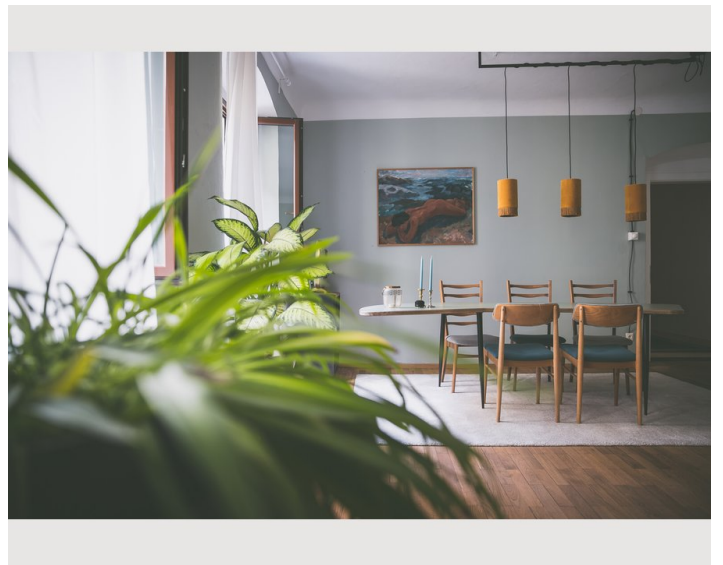
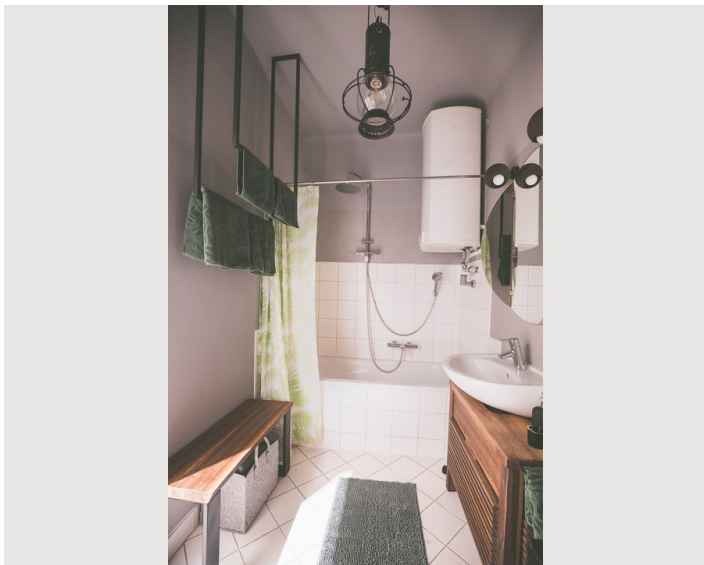
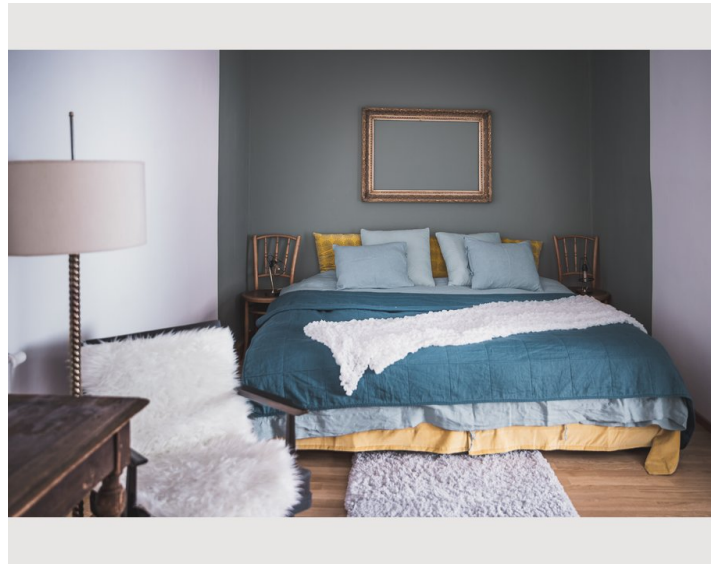
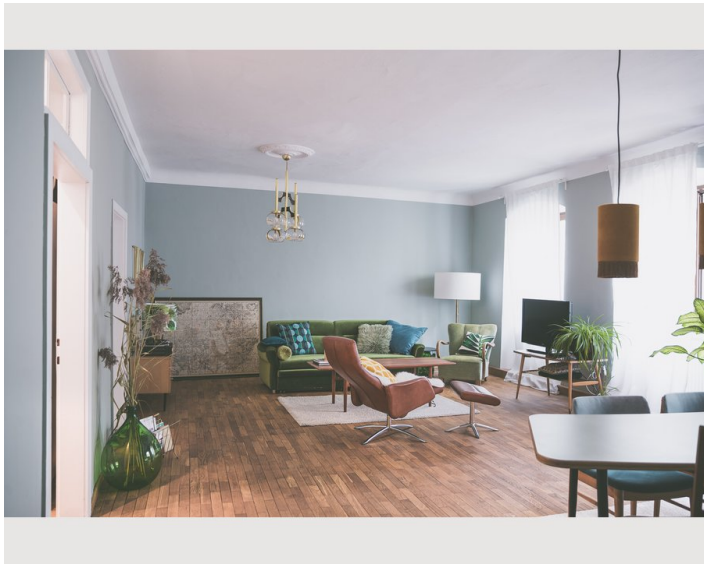
Kitchen

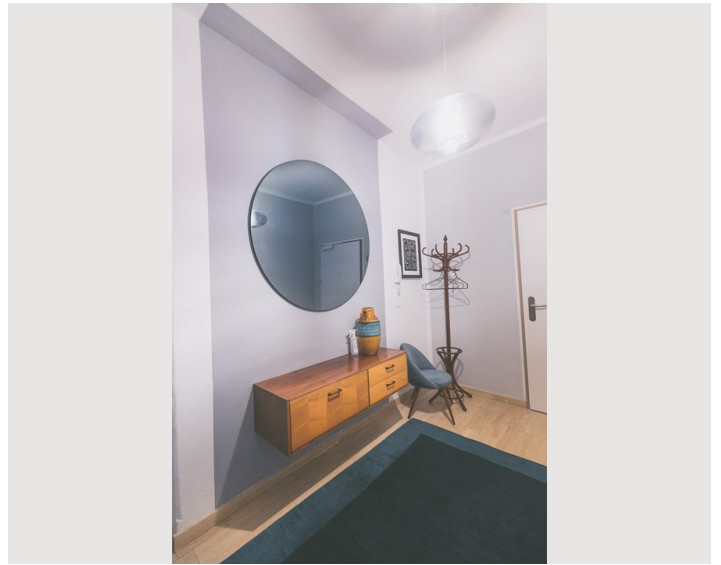
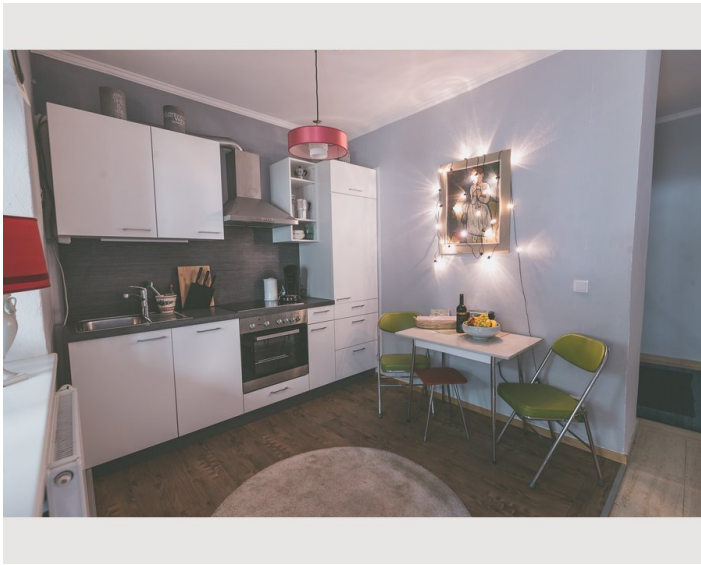
- Private kitchen
- Glasses/Tableware
- Dishwasher
- Cooking utensils
- Coffee machine

Informations


- Smoking not allowed
- Desk/Workplace
- Pets forbidden
- Short-term parking zone subject to a charge
- Private entrance

Picture gallery





Infrastructure

 in front of the house

 apartment is directly in the heart of the city

 10 walking minutes

 in the neighbourhood

The apartment is in the center of Schwaz, few minutes from motorway A12 exit "Schwaz", 25km from Innsbruck and 50km from Kufstein, close to the valley Zillertal with several ski areas and the glacier resort Hintertux. In front of the door the ski bus starts to the local ski area in Schwaz (€3,50) or to SWAROVSKI Kristallwelten. The infrastructure in Schwaz offers supermarkets, a shopping mall, restaurants, ski areas, outdoor pool, a planetarium, a tourist mine, museums and lots of nature.

Location

