



2 ROOM APARTMENT, 5020 SALZBURG

Apartment

Object number: BAUQ1

[View and rent online](#)

Newly renovated apartment with winter garden and garden in a central location.

Period	31/05/ - 01/07/2026
Number of persons	2
Total incl. VAT.	€ 2.132,41
Security deposit	€ 1.600,00



Living space

54m²



Maximum occupancy

2 Persons



Complete accommodation [?]

1 Private bathroom 1 Separated bedroom



Ground floor



Check-in

09:00 - 20:00 Clock



Check-out

11:00 - 20:00 Clock

Sleeping options

Sleeping room



1x Double bed (1,60 m x 2 m)

Descripton of accommodation

Charming two-room apartment in an extremely quiet location. Shops in the immediate vicinity. Due to its proximity to the Salzach, it is also an ideal local recreation area with numerous sports facilities. The apartment was completely renovated in 2020 (new bathroom, floor, walls, new furnishings)

Equipment & Features



Basic equipment

- Terrace
 - Internet/Wifi
 - TV
 - Bedclothes
 - Private toilet
 - Iron & ironing board
 - Hairdryer
 - Garden
 - Music system/docking station
 - Private washing machine
 - Towels
 - Vacuum cleaner
 - Cleaning utensils
-



Fireplace

- Tiled stove
-



First supply

- Toilet paper
 - Nespresso capsules
-



Kitchen

- Private kitchen
- Espresso machine
- Glasses/Tableware
- Dishwasher

Informations

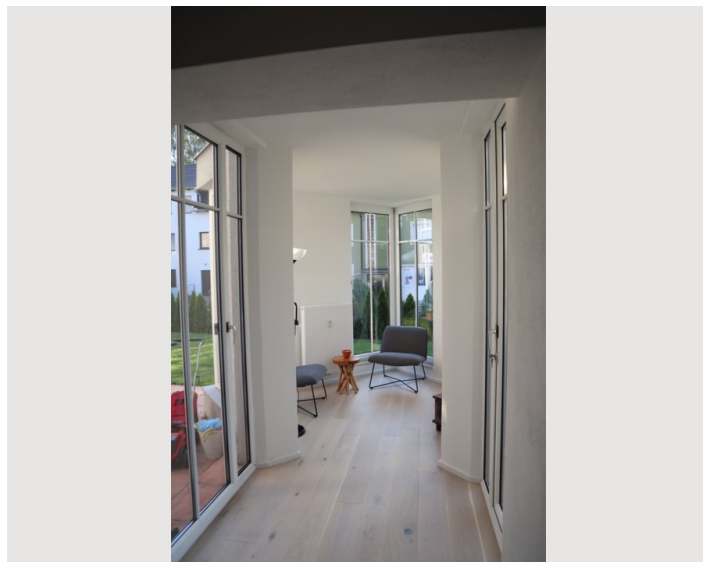
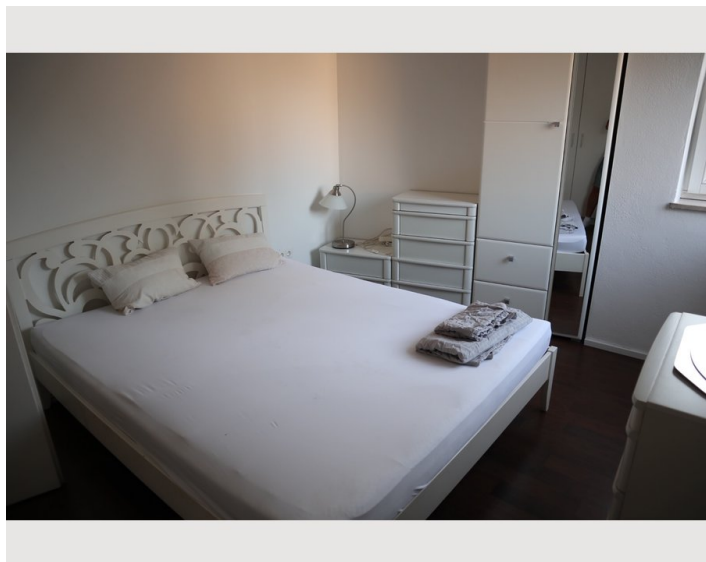
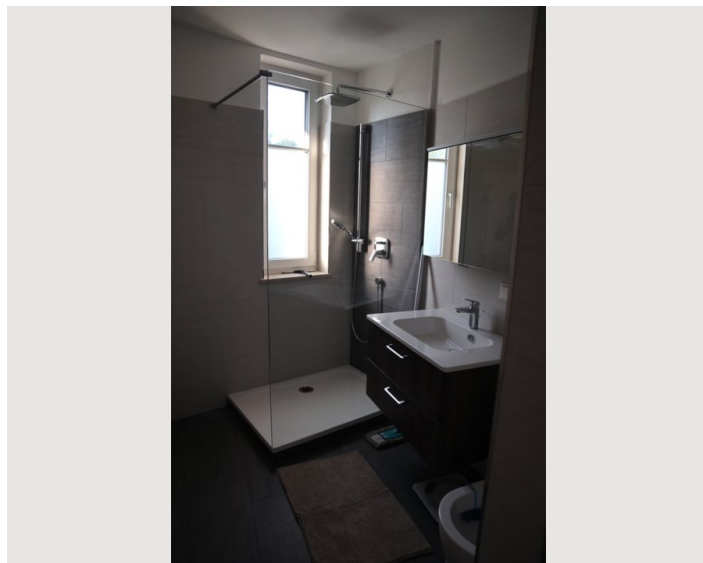
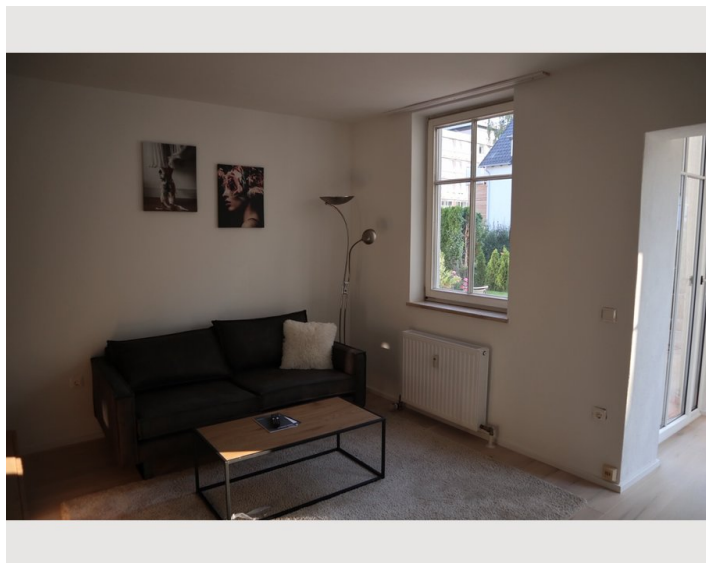
- Suitable for children
- Free short-term parking zone
- Private entrance
- Pets allowed
- Bicycle room free of charge
- Smoking not allowed
- Desk/Workplace
- Pets on request
- Regular cleaning at extra cost

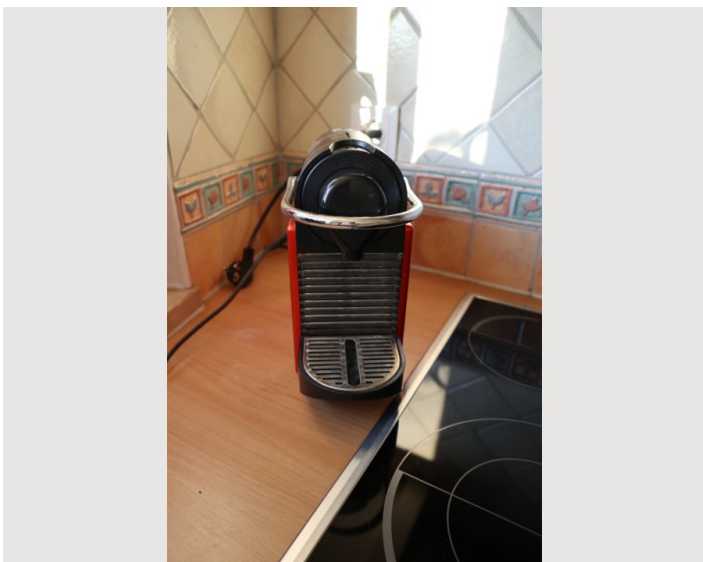
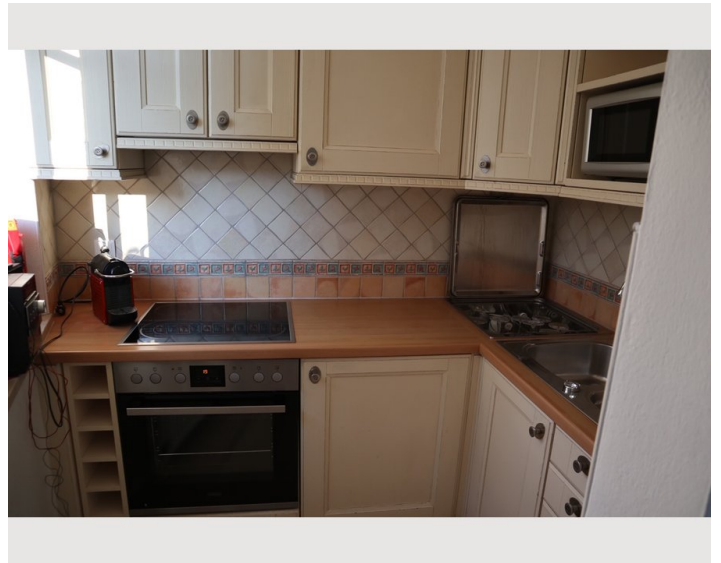
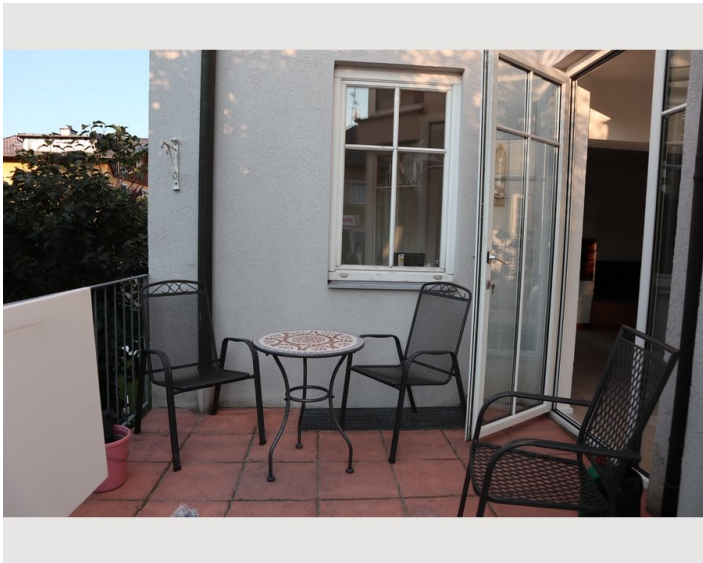
Additional services

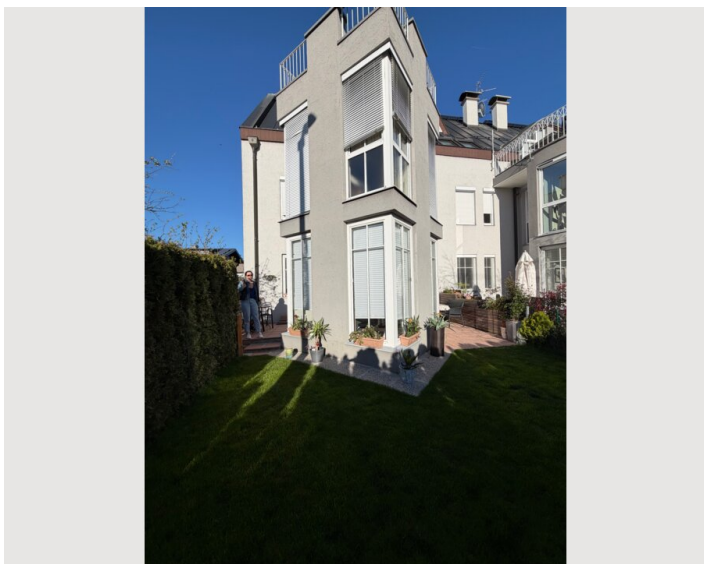
- Bicycle (€ 0,00)

All prices are gross per month - billing is done directly with the lessor.





Picture gallery







Infrastructure

-  Can be reached on foot in 20 minutes (1.7 km)
-  Center of Salzburg (2.3 km)
-  Billa supermarket in the immediate vicinity (350 m)
-  Salzburg Airport (4,7 km)

A supermarket is in close proximity to the apartment. The center can be easily reached by bike in 10 minutes along the Salzach. The train station is only a few minutes away. Parks and walking paths invite you to linger.

Location

