

3 ROOM APARTMENT, 1100 VIENNA

## Gorgeous Apartment in Monte Verde Tower

Object number: YWFZ1

[View and rent online](#)

The 3-rooms-apartment is situated on 15th floor of Monte Verde Tower with panoramic view until the borders of the city. On the top floor there is a pool, sauna and fitness facilities. With Concierge-Service. Basement compartment inclusive.

<b>Period</b>	17/04/ - 17/05/2026
<b>Number of persons</b>	2
<b>Total incl. VAT.</b>	€ 2.353,32
<b>Security deposit</b>	€ 1.800,00



### Living space

72m<sup>2</sup>



### Maximum occupancy

2 Persons



### Complete accommodation <sup>?</sup>

1 Private bathroom 1 Separated bedroom



### 15. floor

Elevator available



### Check-in

11:00 - 17:00 Clock



### Check-out

11:00 - 17:00 Clock

## Sleeping options

### Sleeping room



1x Double bed (1,80 m x 2 m)

## Description of accommodation

The apartment is situated on 15th floor of Monte Verde Tower with panoramic view until the borders of the city. On the top floor there is a pool, sauna and fitness facilities. With Concierge-Service. Basement compartment inclusive.

A parking lot can be rented for 100.-/month.

The apartment consists of 3 rooms, bathroom, separate toilet, storeroom and a balcony with 11m<sup>2</sup>. The apartment is fully furnished including tableware and towels.

The apartment is located near Wienerberg-City with a large cinema and shopping center with bars and restaurants as well as supermarkets. Nearby you will find a large green recreation area with a lake 'Wienerbergteich'. Monte Verde Tower is situated near public transport and is also close to the highway.

## Equipment & Features



### Basic equipment

- Balcony
- TV
- Dryer
- Towels
- Parking space
- Iron & ironing board
- Internet/Wifi
- Private washing machine
- Bedclothes
- Private toilet
- Vacuum cleaner
- Hairdryer



### Pool

- Outdoor Pool



### Wellness

- Fitness room



### First supply

- Toilet paper
- Nespresso capsules
- Soap



### Kitchen

- Private kitchen
- Glasses/Tableware
- Dishwasher
- Cooking utensils
- Coffee machine
- Microwave

## Informations

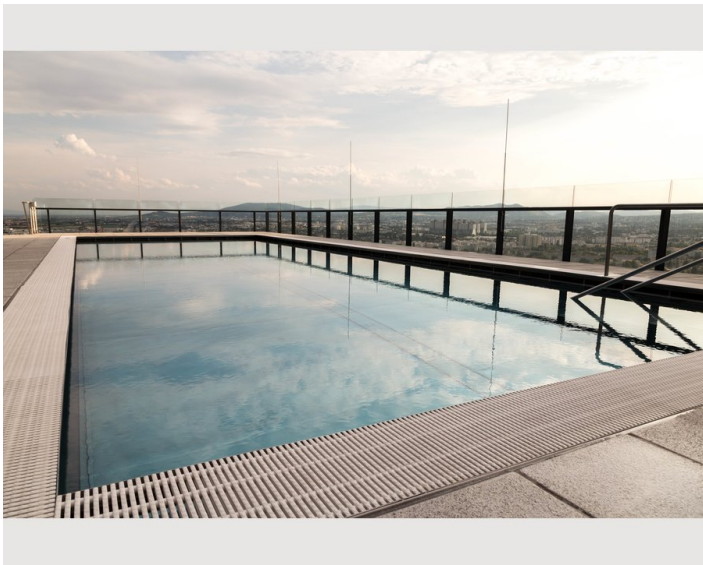
- Smoking not allowed
- Private entrance
- Bicycle room free of charge
- Desk/Workplace
- Pets forbidden

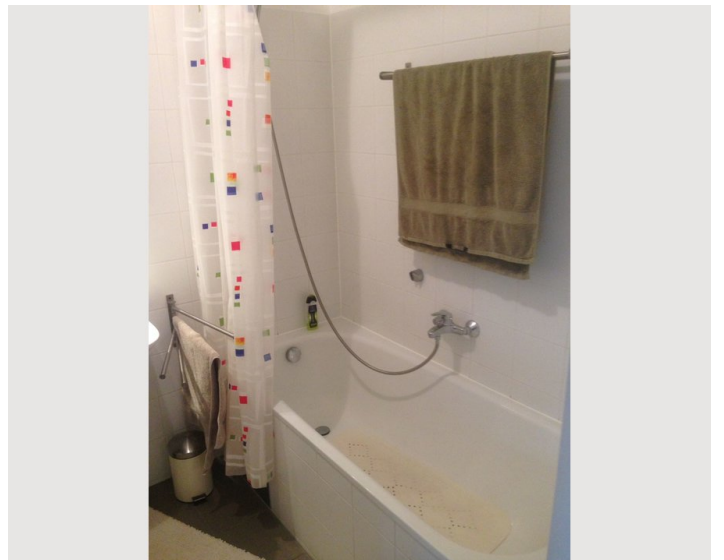
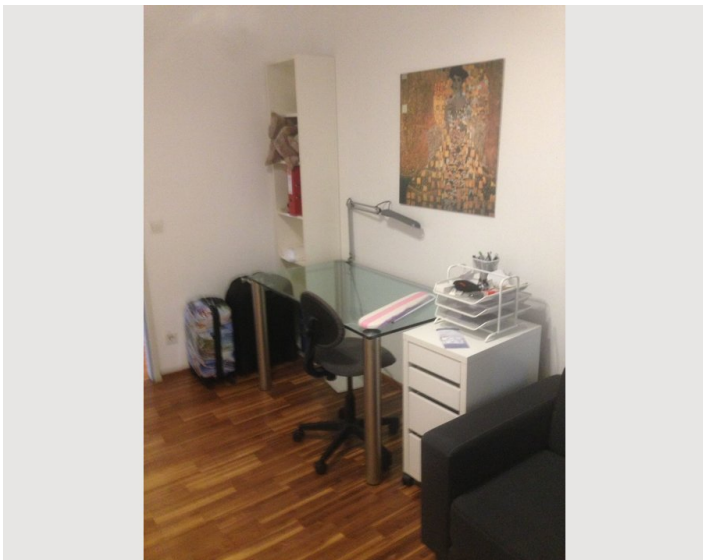
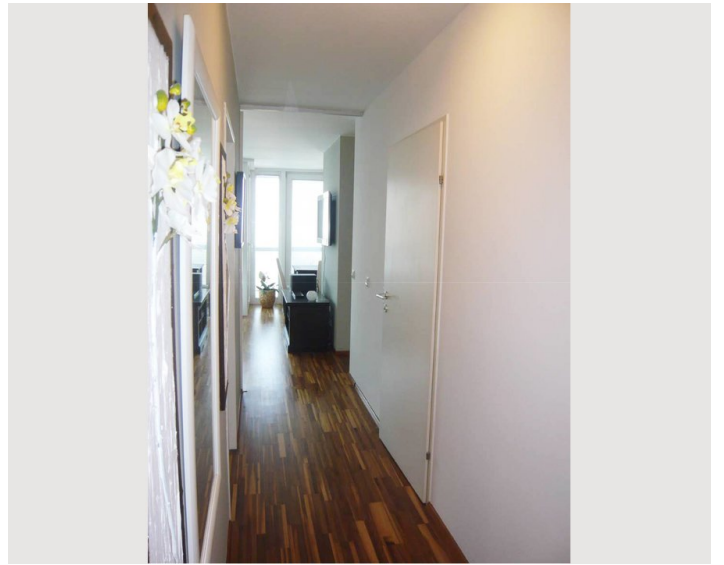
## Additional services

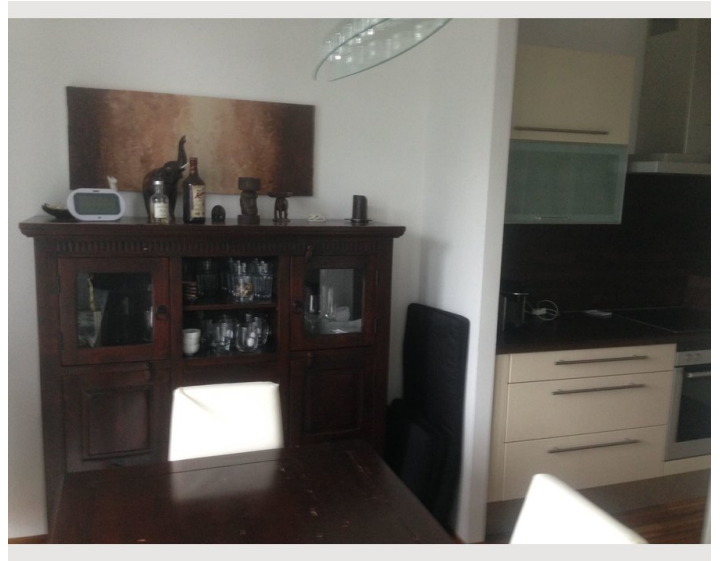
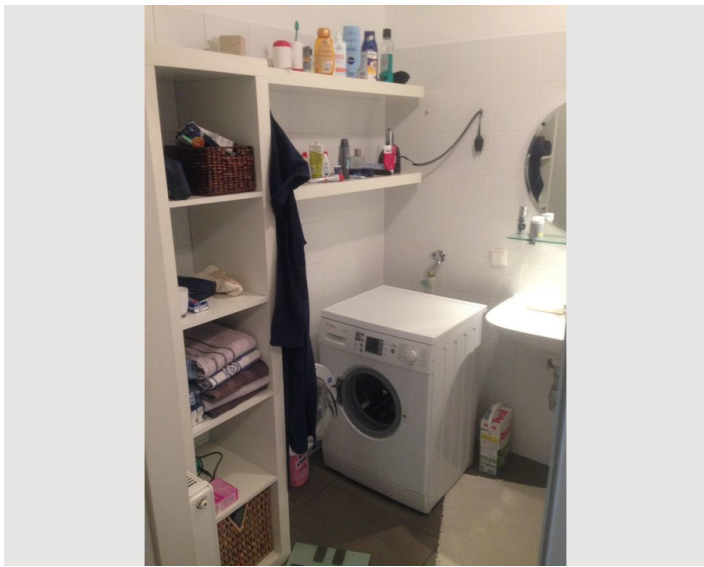
- parking lot (€ 100,00)

All prices are gross per month - billing is done directly with the lessor.


## Picture gallery







### Infrastructure

 30m distance



---

The apartment is located near Wienerberg-City with a large cinema and shopping center with bars and restaurants as well as supermarkets. Nearby you will find a large green recreation area with a lake 'Wienerbergteich'. Monte Verde Tower is situated near public transport and is also close to the highway.

## Location

