



3 ROOM APARTMENT, 1100 VIENNA

3 separate rooms, close to the main railway station, 10 minutes to the city centre

Object number: SCHA2

[View and rent online](#)

Very well-connected apartment on the 5th floor with elevator, featuring 3 separate rooms. Close to the subway and main train station, 10-15 minutes to the city center, green spaces and restaurants in the immediate vicinity.

Period	18/12/2025 - 18/01/2026
Number of persons	2
Total incl. VAT.	€ 3.383,80
Security deposit	€ 2.600,00



Living space

73m²



Maximum occupancy

5 Persons



Complete accommodation [?]

1 Shared bathroom 3 Separated bedrooms



5. floor

Elevator available



Check-in

15:00 - 00:00 Clock



Check-out

00:00 - 10:00 Clock

Sleeping options

Bedroom 1



1x Double bed (1,40 m x 2 m)

Bedroom 2



1x Single bed

Bedroom 3



1x Double bed (1,40 m x 2 m)

Descripton of accommodation

Very well connected 3-room apartment.

3 separate rooms, space for 3-5 people.

Fully furnished including kitchen, washing machine, furniture, etc.

Perfect for a quick and easy move-in.

Room layout:

* Room 1: 19m² room including kitchenette (without water connection), double bed, large table, wardrobe, large sofa, coffee table

* Room 2: 8m² room with single bed, wardrobe, desk, reading chair

* Room 3: 23m² room including kitchenette (without water connection), double bed, large table, wardrobe

* Anteroom with seating niche and table

* Kitchen including washing machine and dishwasher

* Bathroom with shower

* Toilet

Equipment & Features



Basic equipment

- Internet/Wifi
- Bedclothes
- Private toilet
- Iron & ironing board
- Hairdryer
- Private washing machine
- Towels
- Vacuum cleaner
- Cleaning utensils



First supply

- Toilet paper
- Soap



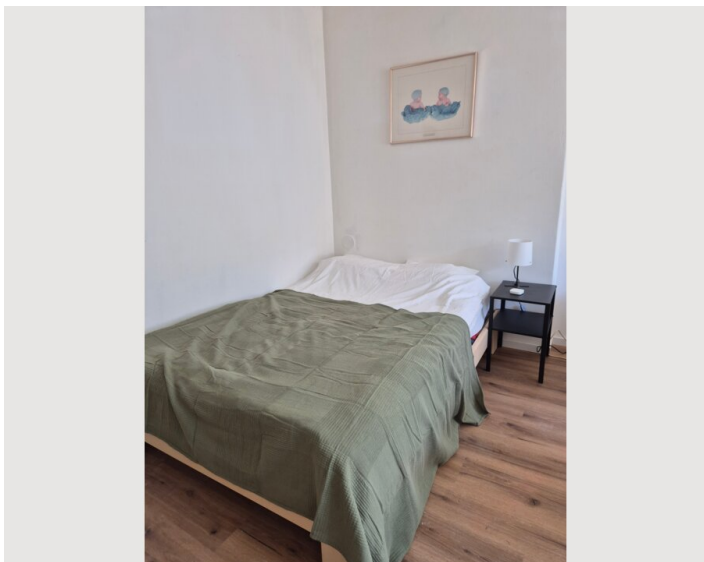
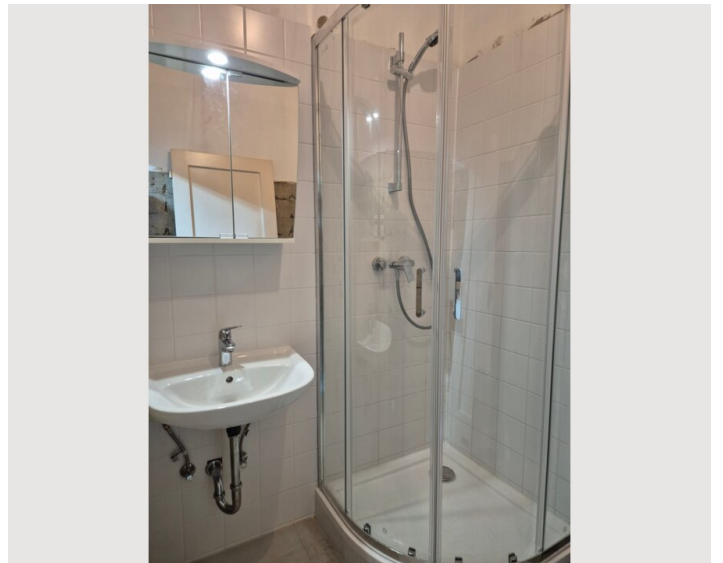
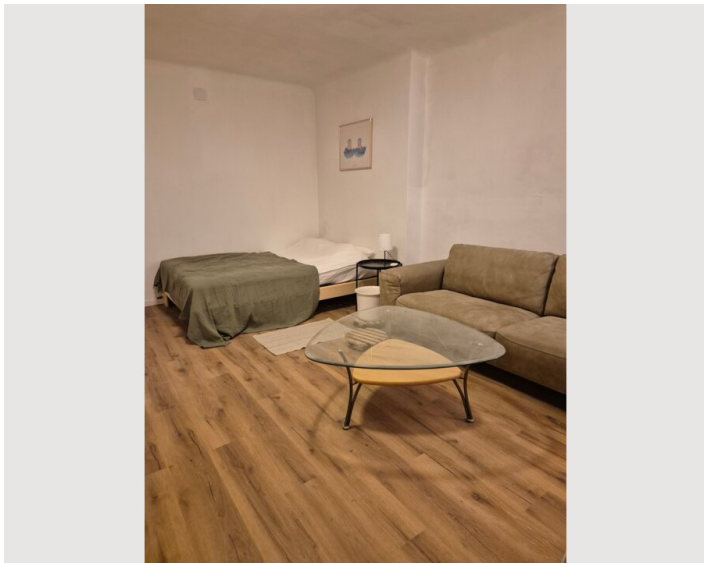
Kitchen

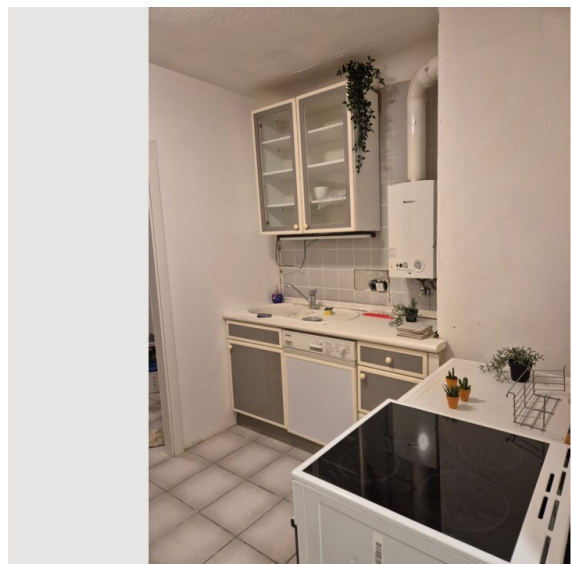
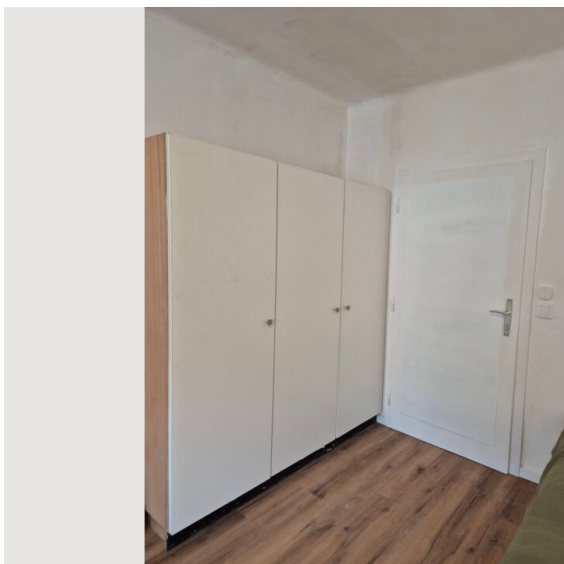
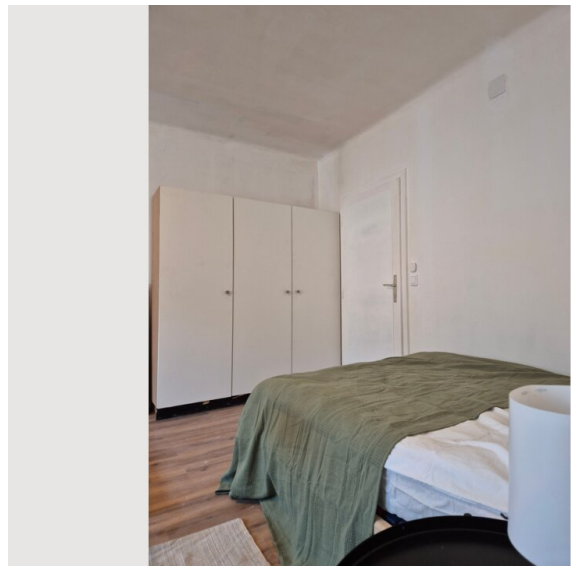
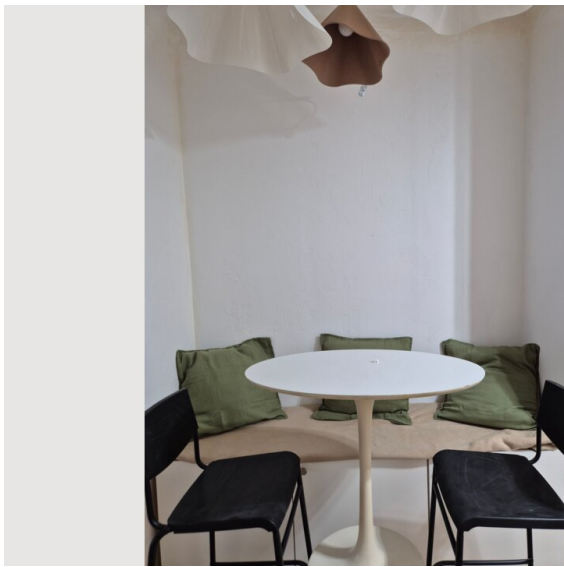
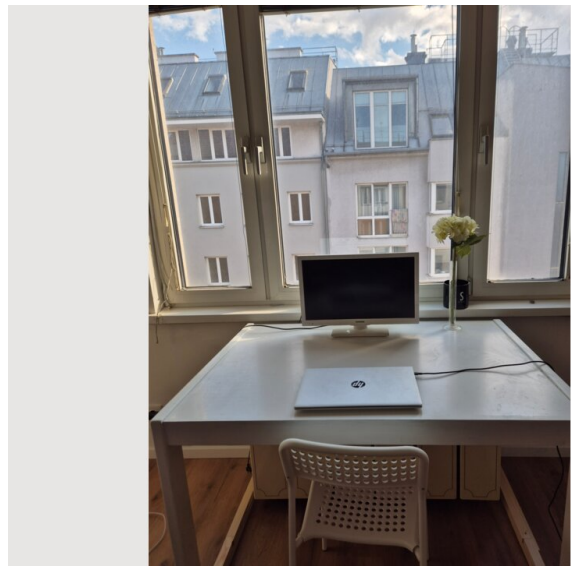
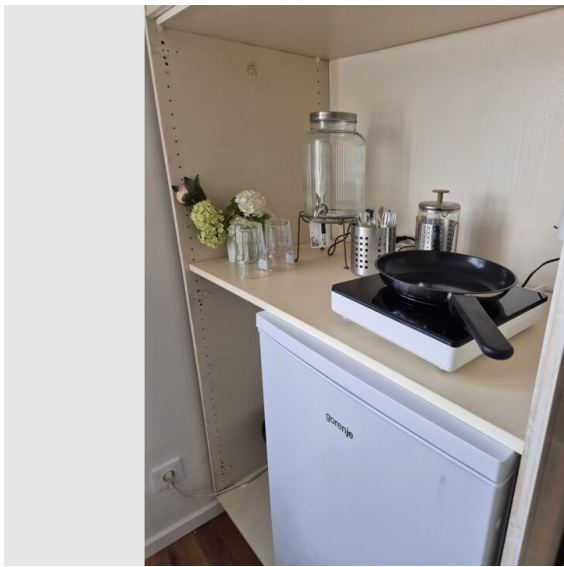
- Shared kitchen
- Cooking utensils
- Filter coffee
- Microwave
- Kitchenette
- Glasses/Tableware
- Dishwasher

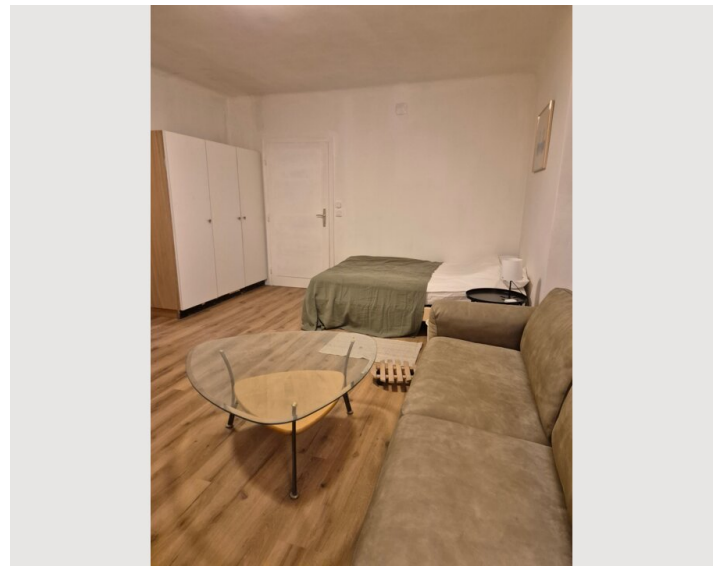
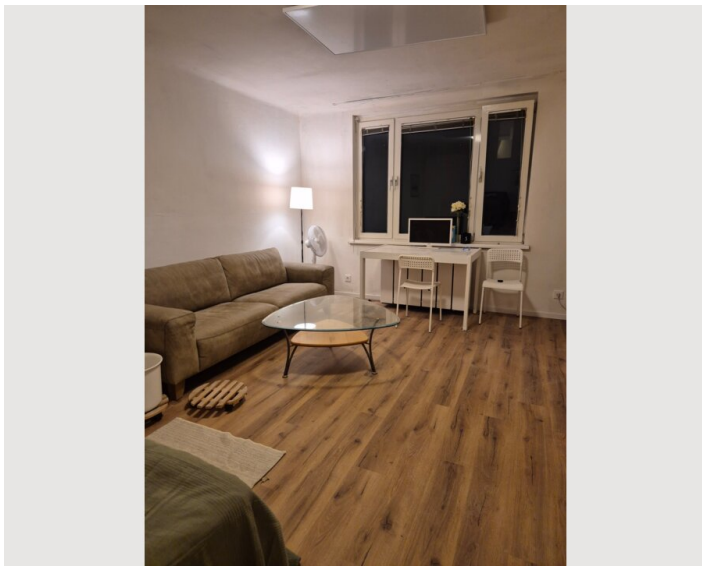
Informations

- Smoking not allowed
- Pets forbidden
- Desk/Workplace
- Bicycle room free of charge






Picture gallery







Infrastructure

-  U1 Reumannplatz with numerous subway, tram, and bus connections
-  Well connected to the airport via the nearby main train station
-  2 stops by subway or 10-15 minutes on foot
-  Numerous shopping opportunities in the immediate vicinity
-  10-15 minutes by subway to Stephansplatz in the city center

U1 Reumannplatz station and many trams in the immediate vicinity.
Just a few minutes to the city center.

Perfectly connected to the nearby main train station, S-Bahn trains, and international train connections.

Just around the corner is Favoritenstraße (shopping street) with all the shops you need for your daily needs. The Viktor Adler Market is located there next to supermarkets, drugstores, pharmacies, doctors, and other shopping opportunities.

The nearest green spaces are Helmut Zilk Park in the immediate vicinity (3 minutes) or Laaer Wald and Belvedere Palace, which can be reached in no time on foot or by bike for a slightly longer walk.

*U1 Reumannplatz 3 min walk, *Stephansplatz 12 min by public transport,

*Helmut Zilk Park 4 min walk,

*Main station 10-15 min walk or 2 tram stops

*Favoritenstraße 3 min walk

*Trams 6 and D 3-4 min walk

Location

