



2 ROOM APARTMENT, 1190 VIENNA

## Privilège 37

Object number: BARC4

[View and rent online](#)

A typical Viennese Apartment in Old Style. That means high rooms, wooden floor and bright.

<b>Period</b>	05/07/ - 05/08/2026
<b>Number of persons</b>	2
<b>Total incl. VAT.</b>	€ 2.307,10
Security deposit	€ 1.700,00



### Living space

65m<sup>2</sup>



### Maximum occupancy

4 Persons



### Complete accommodation <sup>?</sup>

1 Private bathroom 1 Separated bedroom 1 Living-Sleepingroom



### 3. floor

Elevator available



### Check-in

15:00 - 00:00 Clock



### Check-out

00:00 - 10:00 Clock

## Sleeping options

### Sleeping room



1x Double bed (2 m x 2 m)

### Living & Sleeping



1x Double bed (2 m x 2 m)

## Descripton of accommodation

A typical Viennese Apartment in Old Style. That means high rooms, wooden floor and bright.

## Equipment & Features



### Basic equipment

- Internet/Wifi
- Private washing machine
- Towels
- Iron & ironing board
- Hairdryer
- TV
- Bedclothes
- Private toilet
- Cleaning utensils



### First supply

- Toilet paper
- Soap
- shampoo
- Nespresso capsules



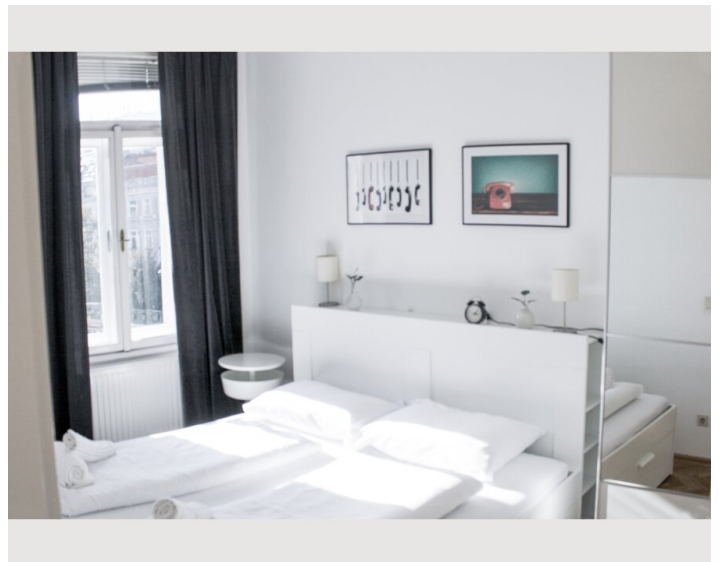
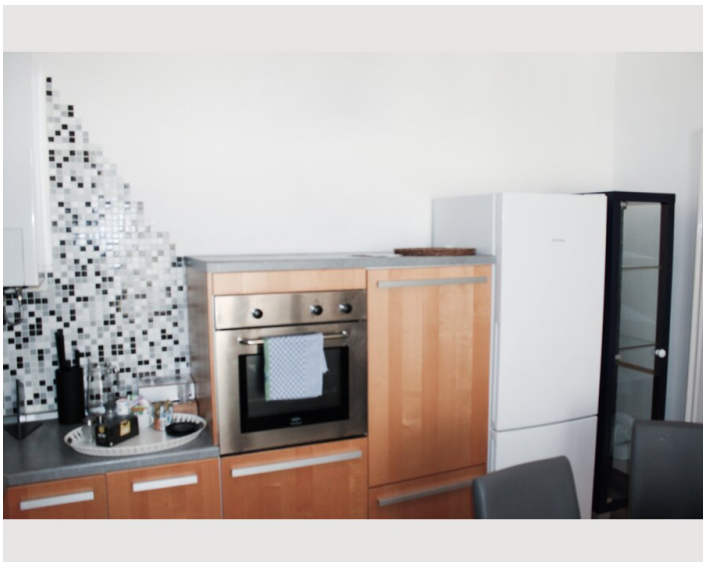
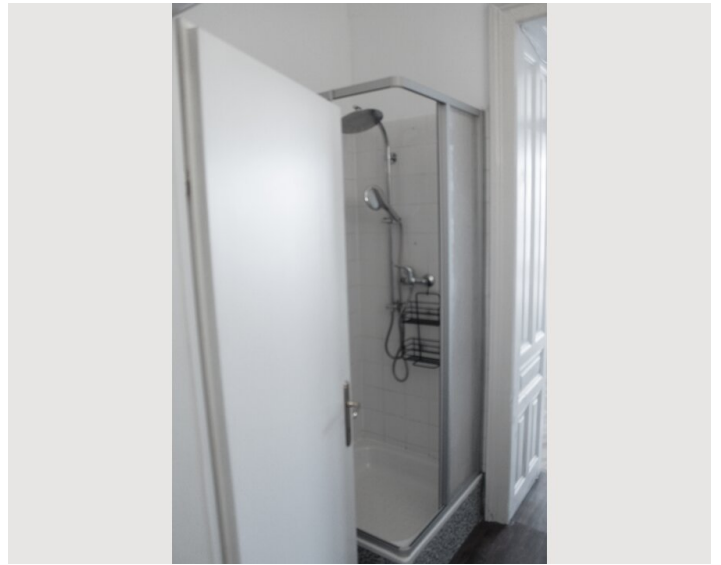
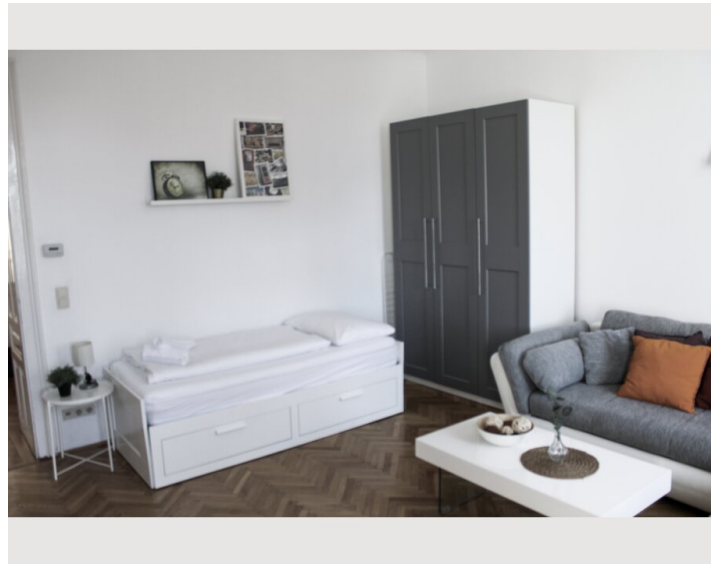
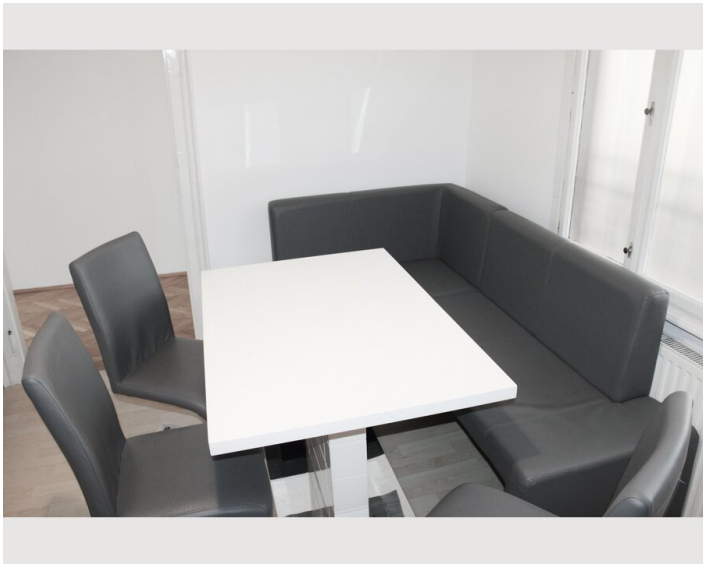
### Kitchen

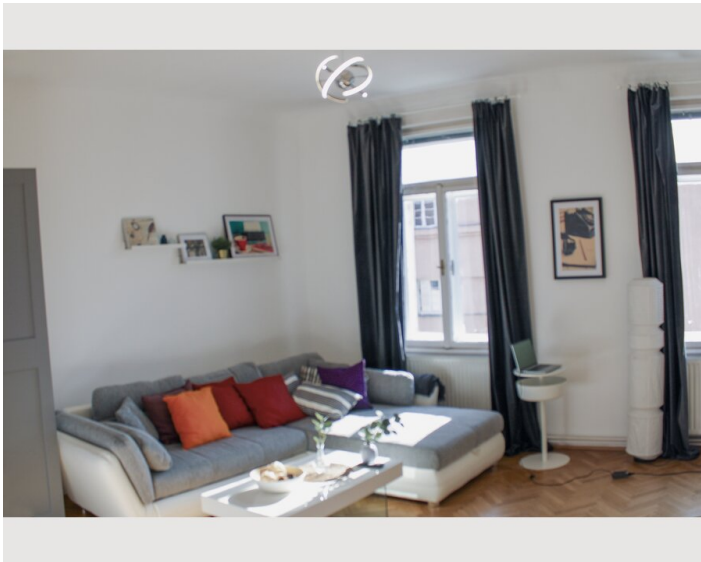
- Private kitchen
- Glasses/Tableware
- Dishwasher
- Cooking utensils
- Espresso machine
- Microwave

## Informations

- Suitable for children
- Pets forbidden
- Bicycle room free of charge
- Smoking not allowed
- Regular cleaning at extra cost


## Picture gallery






### Infrastructure

 Spittelau Metro, Tramway, Train, Busses

 Nußdorfer Straße, Metro, Tramway, Busses

 all brands of supermarkets close

---

Spittelau is an important station with Metro, Tramway, Busses, Trains, everything within 300m. A underground carpark is within 50m (external company)

## Location

