



STUDIO APARTMENT, 1120 VIENNA

## Studio Apartment Schönbrunn

Object number: ELEM1

[View and rent online](#)

Very bright, quiet and cozy studio apartment near Schönbrunn Palace

<b>Period</b>	21/12/2025 - 21/01/2026
<b>Number of persons</b>	2
<b>Total</b> incl. VAT.	€ 1.955,72
Security deposit	€ 1.500,00



### Living space

37m<sup>2</sup>



### Maximum occupancy

1 Person



### Complete accommodation <sup>?</sup>

1 Private bathroom 1 Living-Sleepingroom



### Ground floor



### Check-in

15:00 - 22:00 Clock



### Check-out

10:00 - 11:00 Clock

## Sleeping options

### Living and sleeping



1x Double bed (1,80 m x 2 m)

## Description of accommodation

Very bright, quiet and cozy studio apartment near Schönbrunn Palace, Meidlinger Hauptstrasse U4, Niederhofstrasse U6, Theresienbad, Meidling train station, etc. is offered fully furnished for short-term rental. The studio apartment has a fully equipped kitchen, bathroom with shower and toilet, double bed, reading area, cloakroom, safe, iron and ironing board, internet, satellite TV and much more ...

Numerous shops (supermarkets, tobacco shops, various shops, cafes, restaurants, pizzerias and others) for daily needs are in the immediate vicinity, as well as in the nearby pedestrian zone Meidlinger Hauptstrasse.

The subway stations "Meidlinger Hauptstrasse" (U4) and "Niederhofstrasse (U6) can be reached on foot in 5 minutes, the subway station "Schönbrunn" (U4) - in a maximum of 10 minutes, bus stop 9A-2 Min, etc  
Meidling train station, Badner Bahn, and buses 9A, 10A, 15A, 63A, 8A can also be reached in a few minutes' walk.

The Schönbrunn Palace Park with the Gloriette, the Schönbrunn Baths, the Schönbrunn Zoo, the Technical Museum and various recreational parks are just a few minutes' walk away and offer numerous leisure and sports opportunities.

## Equipment & Features



### Basic equipment

- Internet/Wifi
- Private washing machine
- Towels
- Vacuum cleaner
- Cleaning utensils
- TV
- Bedclothes
- Private toilet
- Iron & ironing board
- Hairdryer



### First supply

- Toilet paper
- Soap
- Fridge filling on request
- shampoo
- Nespresso capsules



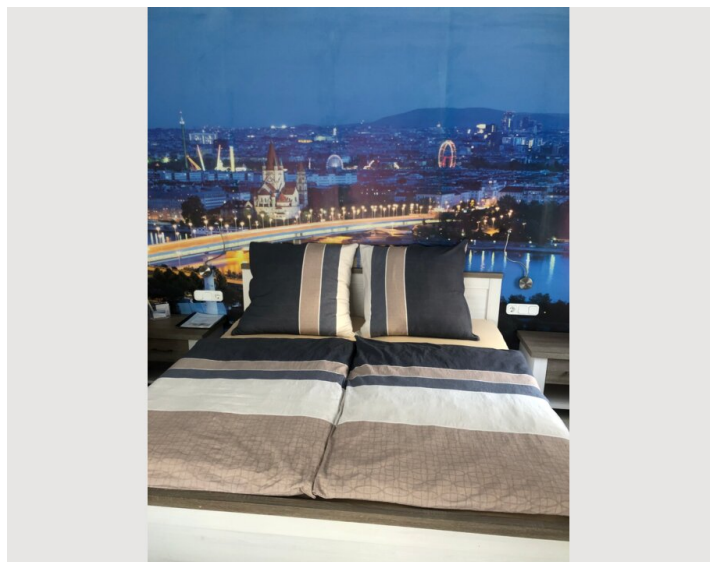
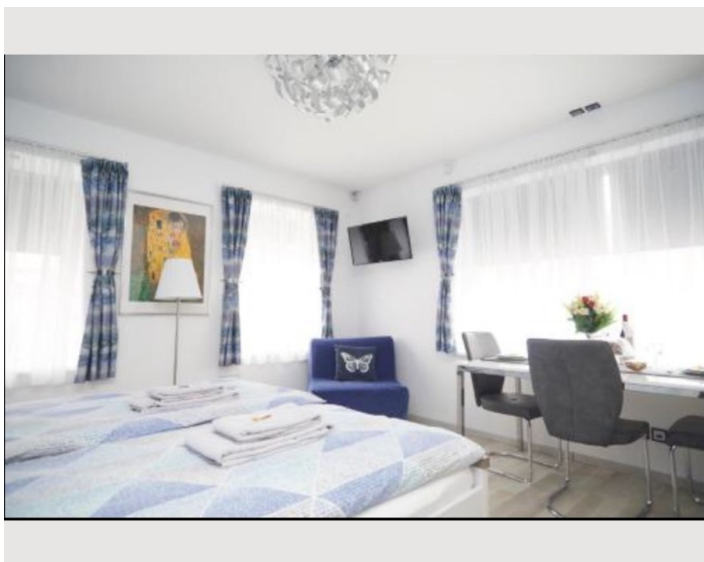
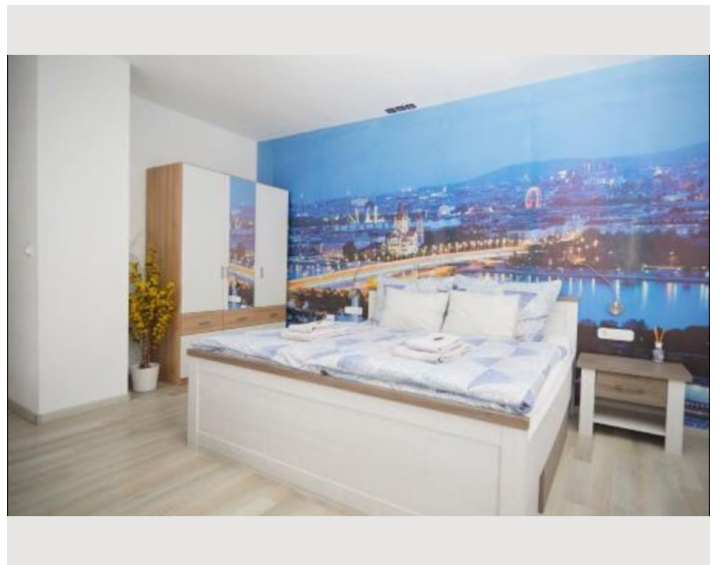
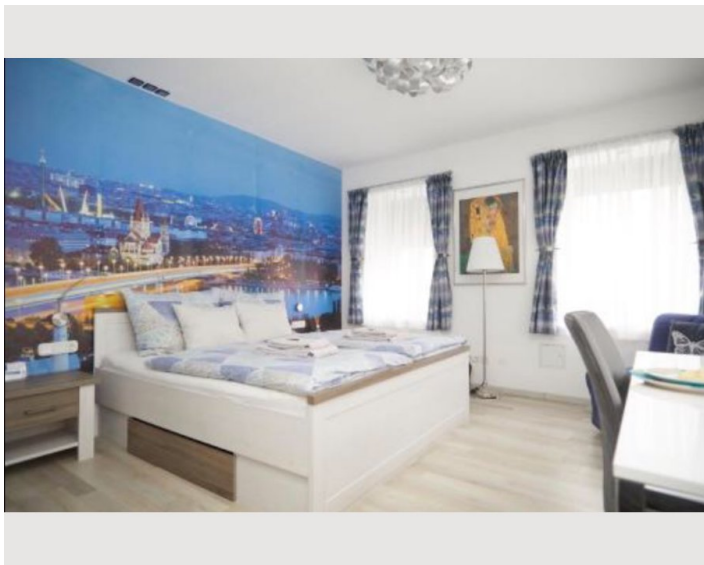
### Kitchen

- Private kitchen
- Glasses/Tableware
- Dishwasher
- Cooking utensils
- Espresso machine
- Microwave

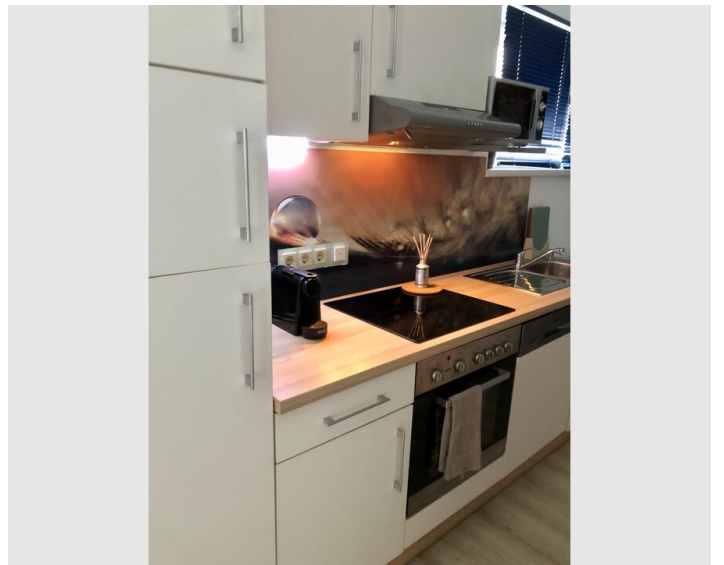
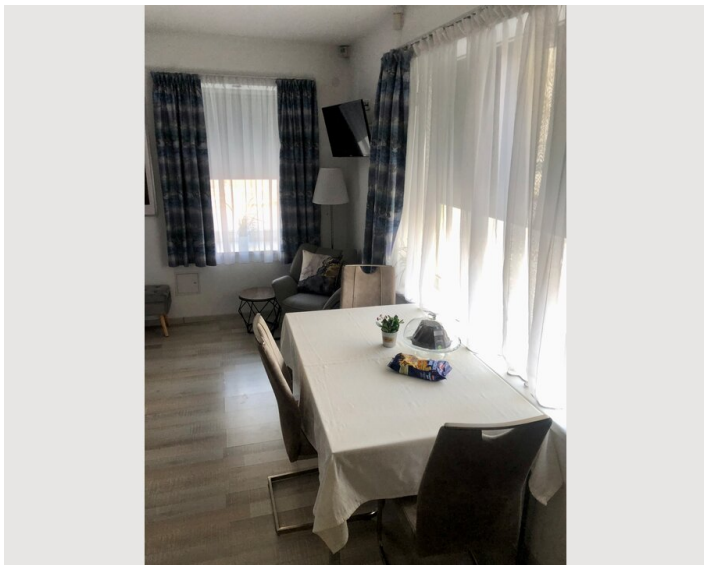
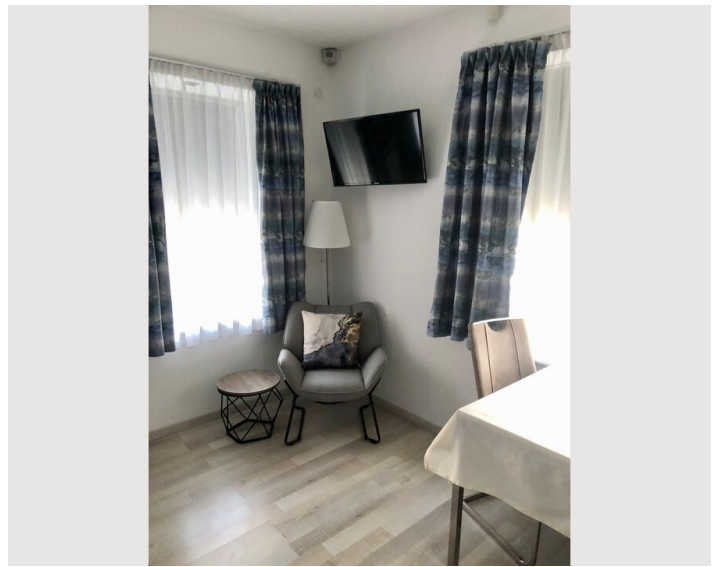
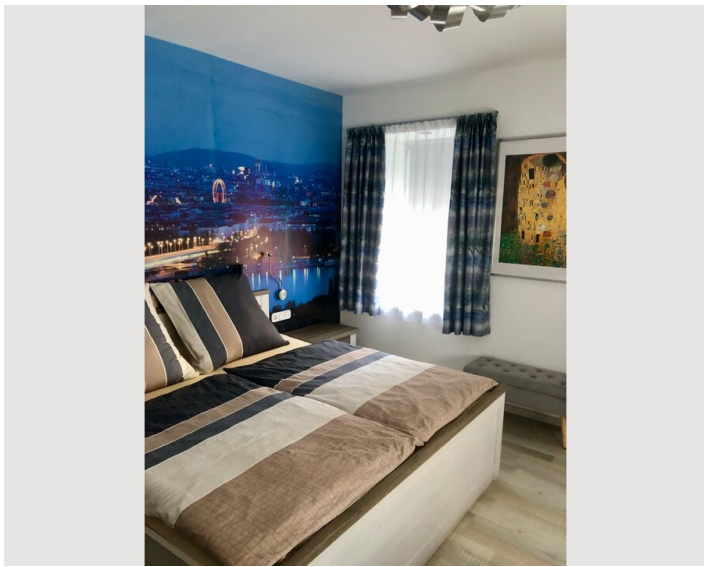
## Informations

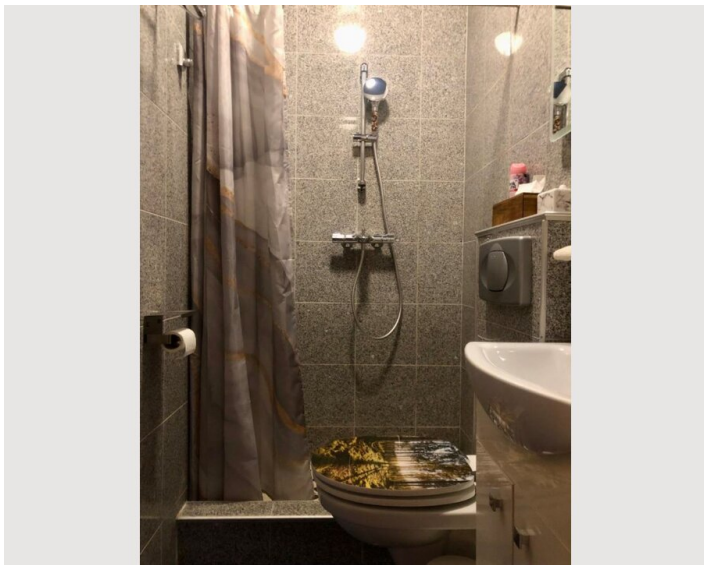
- Suitable for construction workers
- Short-term parking zone subject to a charge
- Regular cleaning at extra cost
- Smoking not allowed
- Pets forbidden

## Picture gallery










### Infrastructure

-  Numerous shops (supermarkets, tobacco shops, various shops, cafes, restaurants, pizzerias and others) for daily needs are in the immediate vicinity, as well as in the nearby pedestrian zone Meidlinger Hauptstrasse.

The subway stations “Meidlinger Hauptstrasse” (U4) and “Niederhofstrasse (U6) can be reached on foot in 5 minutes, the subway station “Schönbrunn” (U4) - in a maximum of 10 minutes, bus stop 9A-2 Min, etc Meidling train station, Badner Bahn, and buses 9A, 10A, 15A, 63A, 8A can also be reached in a few minutes' walk.

Location

