



3 ROOM APARTMENT, 6322 KIRCHBICHL

## Spacious living with history – exceptional maisonette in a listed building

Object number: WECN1

[View and rent online](#)

In an idyllic, peaceful location on the River Inn, surrounded by greenery yet centrally situated in the Inn Valley, this unique and inviting apartment offers the perfect blend of nature and convenient accessibility.

<b>Period</b>	17/04/ - 17/05/2026
<b>Number of persons</b>	2
<b>Total incl. VAT.</b>	€ 3.282,90
Security deposit	€ 2.400,00



### Living space

112m<sup>2</sup>



### Maximum occupancy

8 Persons



### Complete accommodation <sup>?</sup>

2 Private bathrooms 2 Separated bedrooms 2 Shared bedrooms



### 2. floor

Elevator available



### Check-in

00:00 - 12:00 Clock



### Check-out

08:00 - 12:00 Clock

## Sleeping options

### **Bedroom 1**



1x Double bed (1,60 m x 2 m)

### **Bedroom 2**



1x Double bed (1,60 m x 2 m)

### **Living & Sleeping 1**



1x Sofa bed (2 persons)

## Living & Sleeping 2



1x Sofa bed (2 persons)

### Descripton of accommodation

The apartment extends over nearly three levels and features two spacious bedrooms, a cozy sleeping alcove, and an open sleeping gallery. Two bathrooms – one with a bathtub and the other with a shower – provide additional comfort. The large living area with an integrated kitchen and wood-burning stove offers a wonderful living atmosphere in a home full of history. Tradition and modernity come together: the old wooden structure lends the apartment character, while the modern amenities ensure a pleasant living environment and the highest level of comfort.

## Equipment & Features



### Basic equipment

- Balcony
- Internet/Wifi
- TV
- Dryer
- Towels
- Vacuum cleaner
- Cleaning utensils
- Garden sharing
- Music system/docking station
- Washing machine
- Bedclothes
- Private parking space
- Iron & ironing board
- Hairdryer



### Fireplace

- Sweden Stove



### Wellness

- Infrared cabin



### First supply

- Toilet paper
- Soap
- shampoo
- Fridge filling on request



### Kitchen

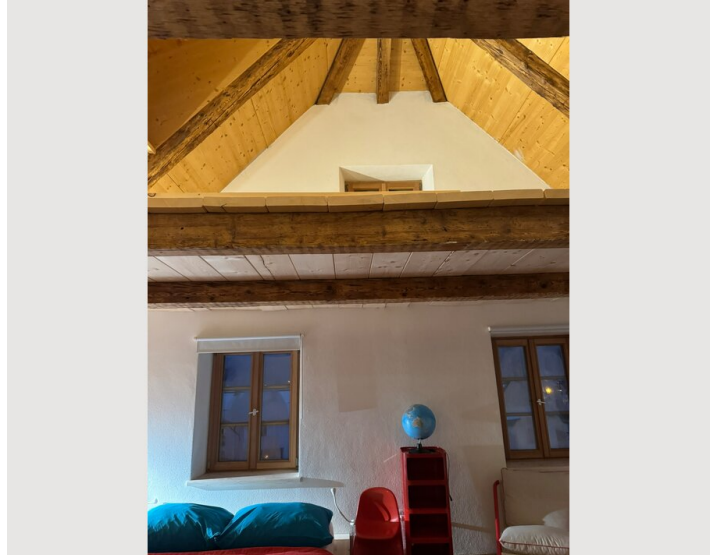
- Private kitchen
- Glasses/Tableware
- Microwave
- Cooking utensils
- Dishwasher

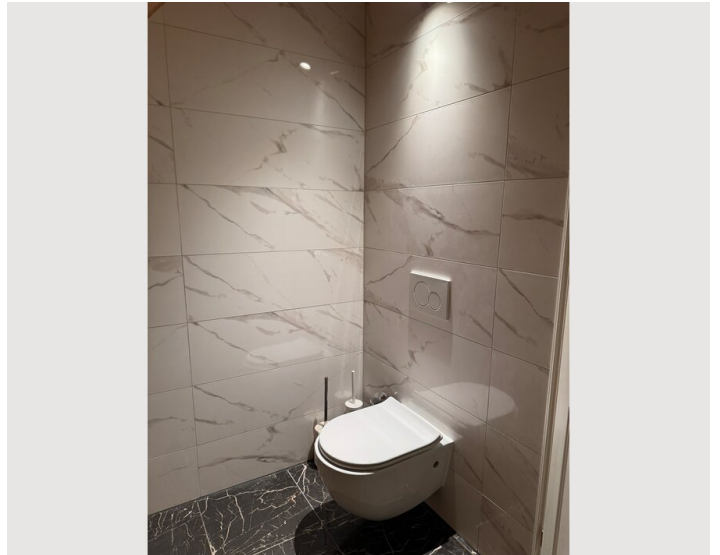
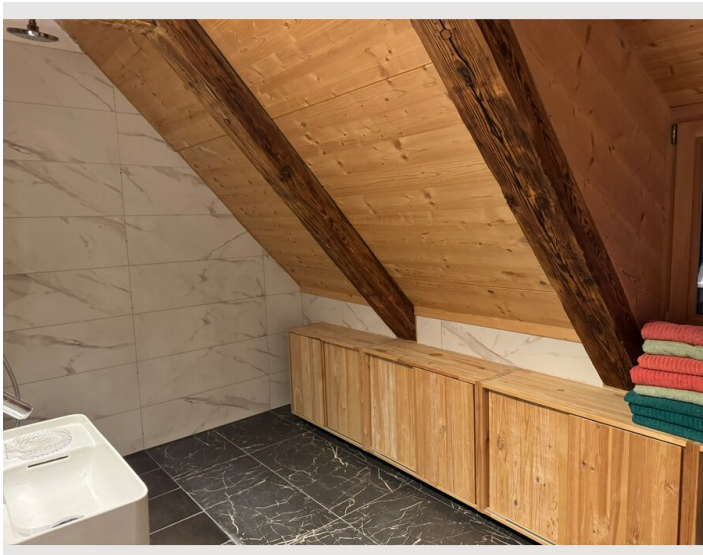
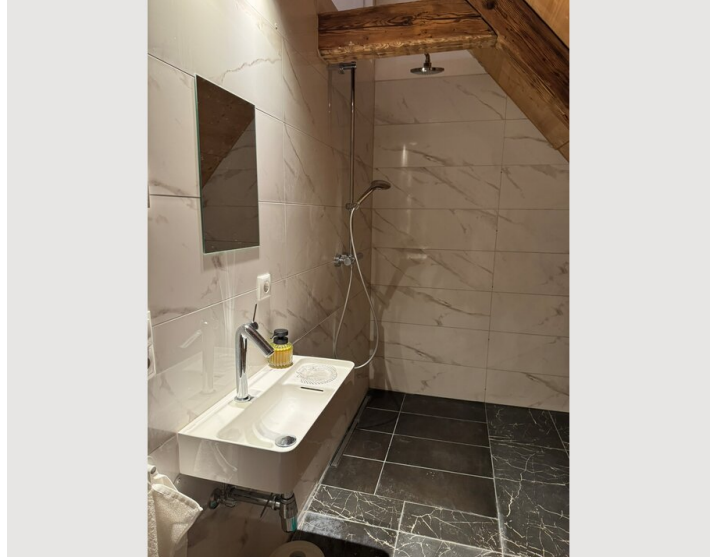
## Informations

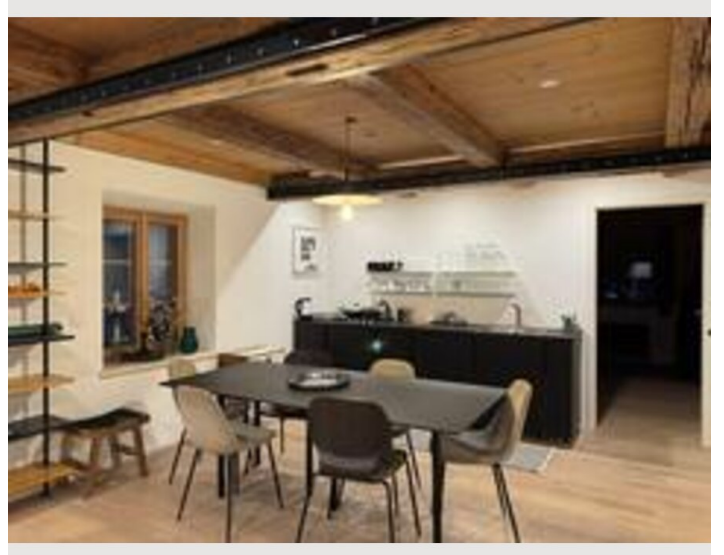
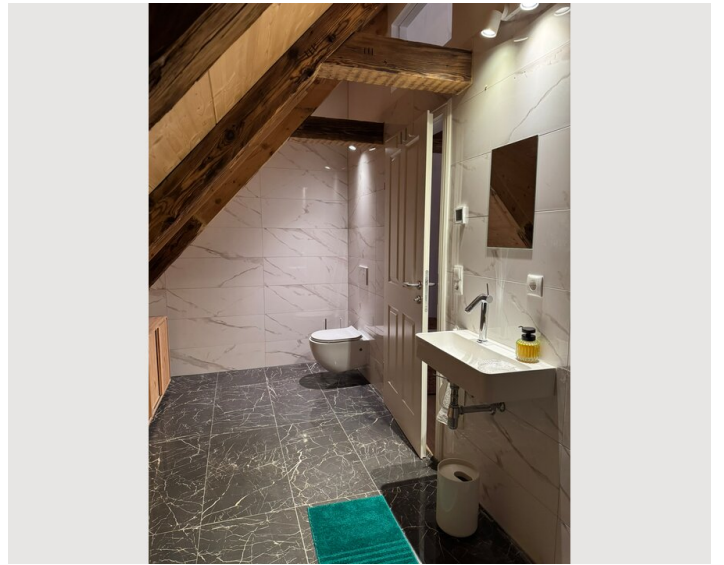
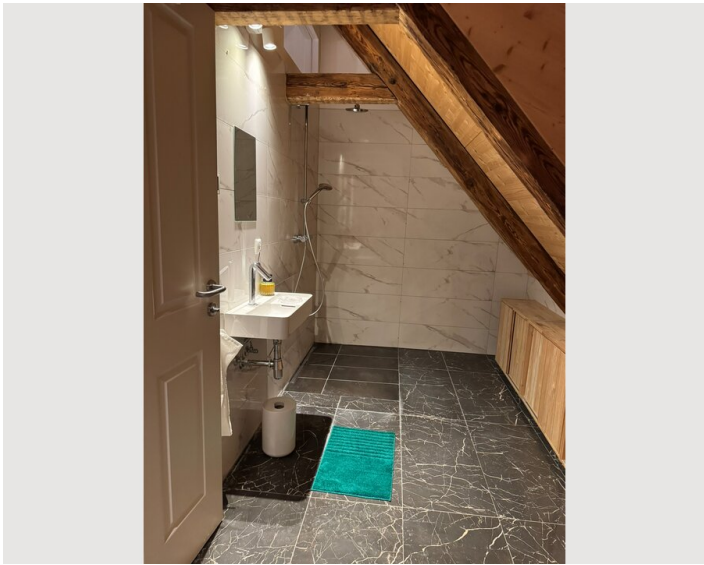
- Suitable for children
- Private entrance
- Regular cleaning at extra cost
- Desk/Workplace
- Pets on request
- Bicycle room free of charge

## Picture gallery











### Infrastructure


 Kichbichl 10 minutes

 Kufstein 15 minutes

 2 busstops nearby


 bicycle and car 3 minutes

 Wörgl, 5 min

 Kundl , 15 minutes

 trainstation Wörgl 5 min

 langkampfen 15 min

 airports munich, salzburg and innsbruk, all  
reachable in around 1 hour

---

In a central yet quiet residential location in the heart of the Inn Valley – with comprehensive infrastructure and excellent motorway access just nearby.

**Location**

