



STUDIO APARTMENT, 1160 VIENNA

## Your designer flat at Yppenplatz: the place to be!

Object number: JAHU2

[View and rent online](#)

<b>Period</b>	01/06/ - 02/07/2026
<b>Number of persons</b>	2
<b>Total incl. VAT.</b>	€ 1.500,07
<b>Security deposit</b>	€ 1.200,00



### Living space

34m<sup>2</sup>



### Maximum occupancy

2 Persons



### Complete accommodation <sup>?</sup>

1 Private bathroom 1 Living-Sleepingroom



### 3. floor

Elevator available



### Check-in

15:00 - 23:00 Clock



### Check-out

00:00 - 11:00 Clock

## Sleeping options

### Living & Sleeping



1x Double bed (1,40 m x 2 m)

## Descripton of accommodation

With a great view over the Yppenplatz and its market stalls, the cafes and restaurants, your apartment comes with everything what makes your stay comfortable: Washing machine, dish cleaner, High speed WLAN, coffee machine... discover Vienna's biggest street market as well as saturday's farmers market or the young art scene - "SoHo in Vienna"!

Yppenplatz is scenic, colorful, vibrant, nevertheless quiet - and by tram only 10 minutes off the very city center.

Be part of the scene - and share your experince with the locals in one of two recently renovated flats in the very heart of "Soho in Vienna"!

## Equipment & Features



### Basic equipment

- Internet/Wifi
- Private washing machine
- Towels
- Private parking space
- Iron & ironing board
- Hairdryer
- TV
- Bedclothes
- Private toilet
- Vacuum cleaner
- Cleaning utensils



### First supply

- Toilet paper
- Nespresso capsules



### Kitchen

- Private kitchen
- Glasses/Tableware
- Dishwasher
- Cooking utensils
- Espresso machine
- Microwave

## Informations

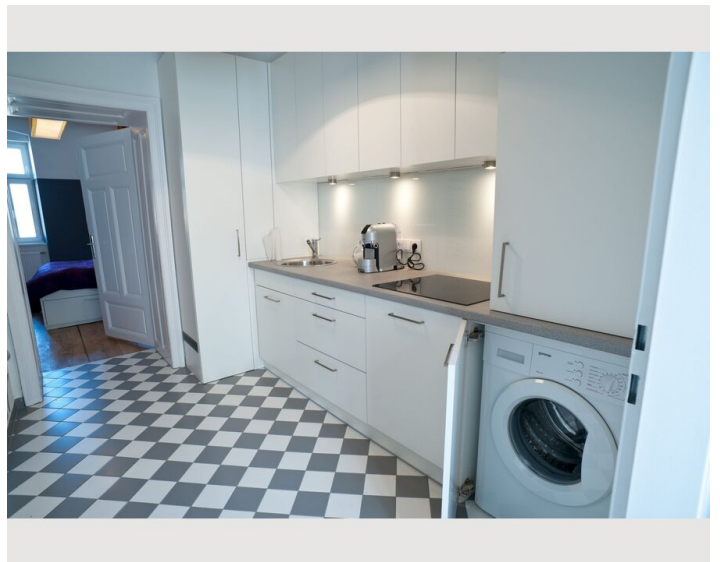
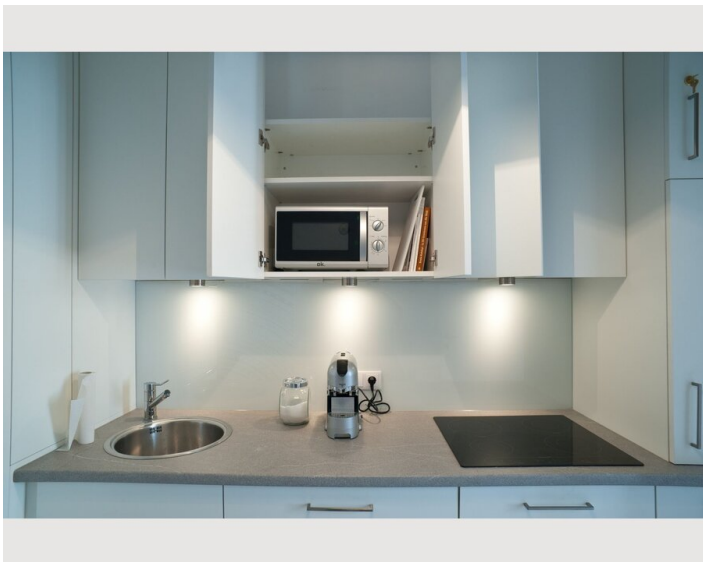
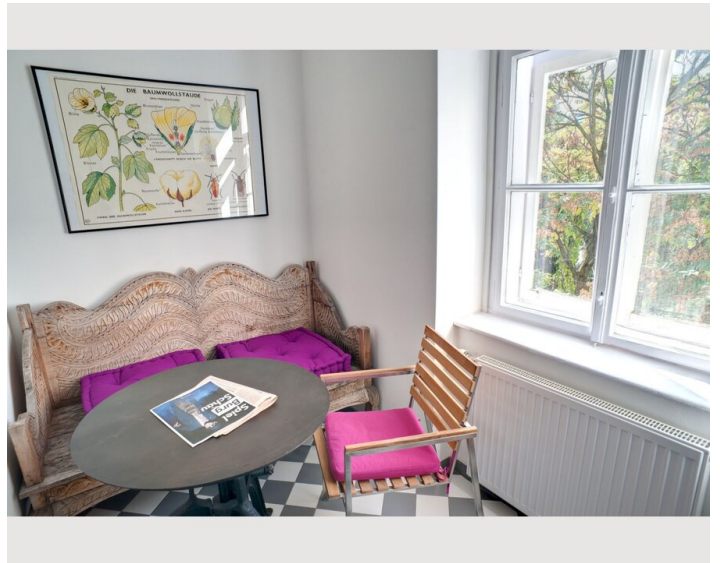
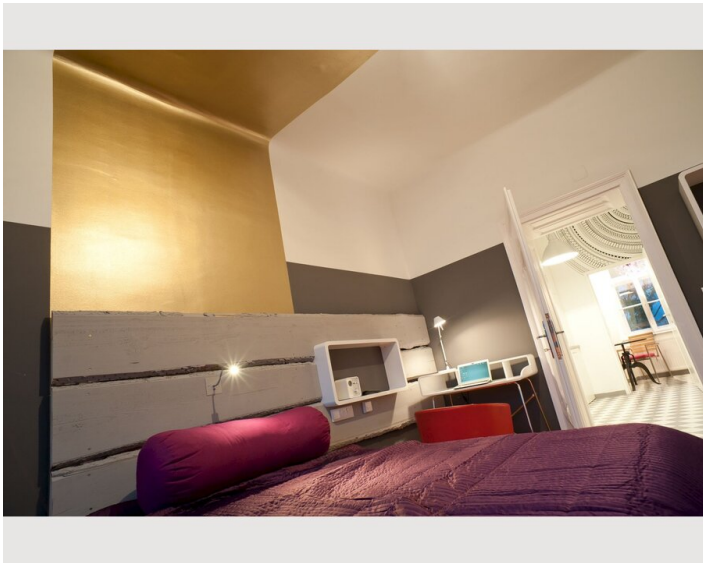
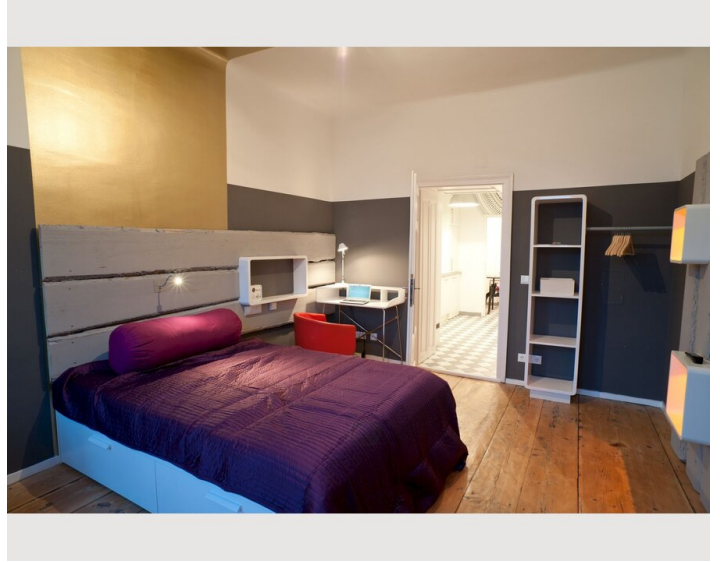
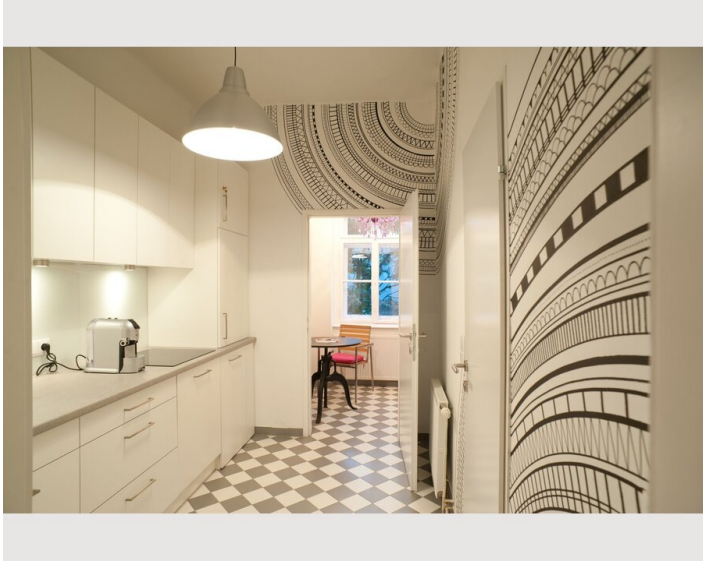
- Smoking not allowed
- Desk/Workplace
- Pets on request
- Bicycle room free of charge
- Short-term parking zone subject to a charge
- Private entrance
- Regular cleaning at extra cost

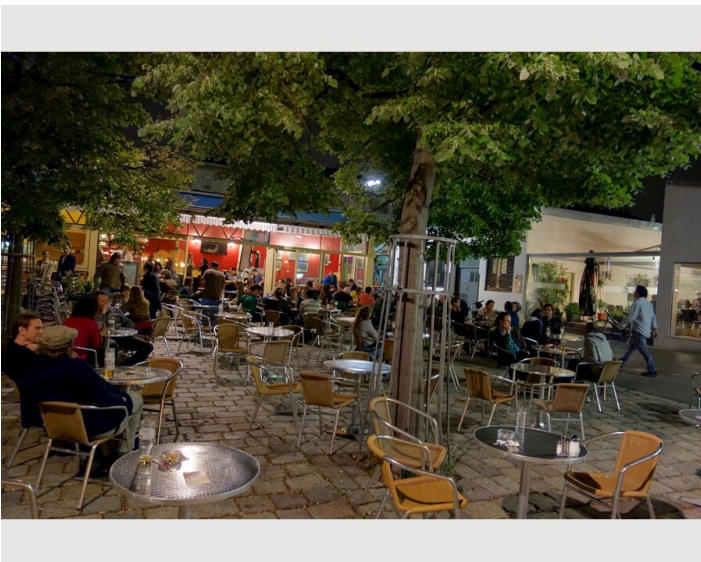
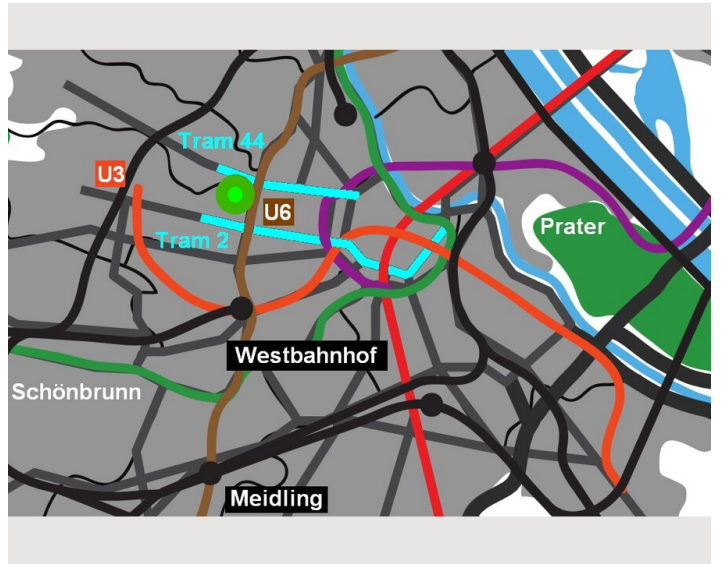
## Additional services

- Garage
- Regular cleaning

All prices are gross per month - billing is done directly with the lessor.

## Picture gallery





## Infrastructure

🕒 with tram line 44 within 10 minutes

## Location

