



HOUSE, 1140 VIENNA

Adelin Vienna

Object number: ZFHP1

[View and rent online](#)

This hostel – conveniently located in Vienna's 14th district (Penzing) – is 9.3 km from Schönbrunn Palace. The property is about 250 meters from the Auhof Center and just a two-minute walk from the Weidlingau S-Bahn station.

Period	05/04/ - 05/05/2026
Number of persons	2
Total incl. VAT.	€ 1.075,94
Security deposit	€ 800,00



Living space

15m²



Maximum occupancy

2 Persons



Shared Accommodation [?]

2 Shared bathrooms 1 Separated bedroom



1. floor



Check-in

14:00 - 00:00 Clock



Check-out

00:00 - 11:00 Clock

Sleeping options

Sleeping room



1x Double bed (1,80 m x 2 m)

Description of accommodation

Adelin Vienna Hostel – strategically located in Vienna's 14th district (Penzing) – offers an ideal starting point for exploring the city.

The property is just 8.1 km from the Rosarium, 8.2 km from the Schönbrunn Gardens, and 9.3 km from Schönbrunn Palace. Wiener Stadthalle is around 10 km away, Westbahnhof is 11 km away, and the Austrian Parliament is 13 km from the hostel. The Leopold Museum and Vienna City Hall (Rathaus) are also located approximately 13 km away. Vienna International Airport (Schwechat) can be reached in about 32 km.

Westbahnhof can be easily reached by S-Bahn in just around 15 minutes. The Weidlingau S-Bahn station is only a two-minute walk from the hostel.

Just two minutes away on foot, you'll also find the Auhof Center – a large shopping mall offering a wide selection of stores, supermarkets, restaurants, and leisure facilities.

The hostel offers free Wi-Fi throughout the entire property as well as a shared kitchen for guest use.

Each room at Adelin Vienna is equipped with a desk, and bed linen is, of course, provided.

The reception is staffed 24/7 – the friendly team speaks German and English and is always happy to assist you.

Equipment & Features

Basic equipment

- Internet/Wifi
- Towels
- Hairdryer
- Bedclothes
- Toilet at the corridor

First supply

- Toilet paper
- Soap

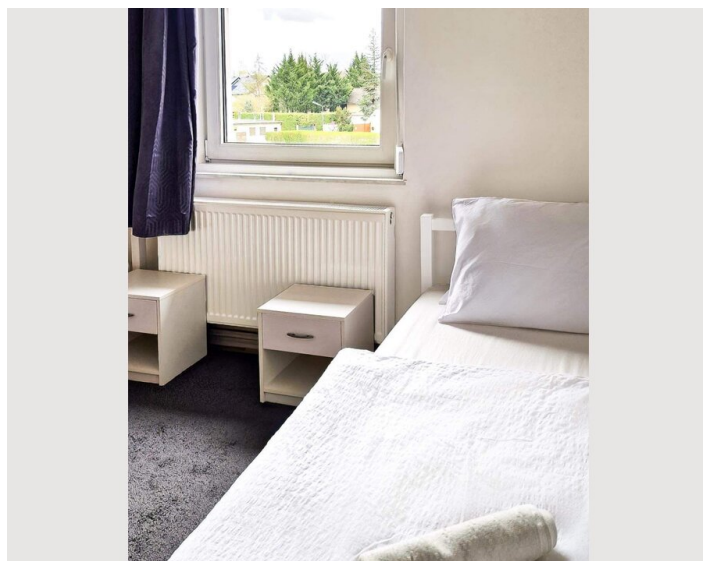
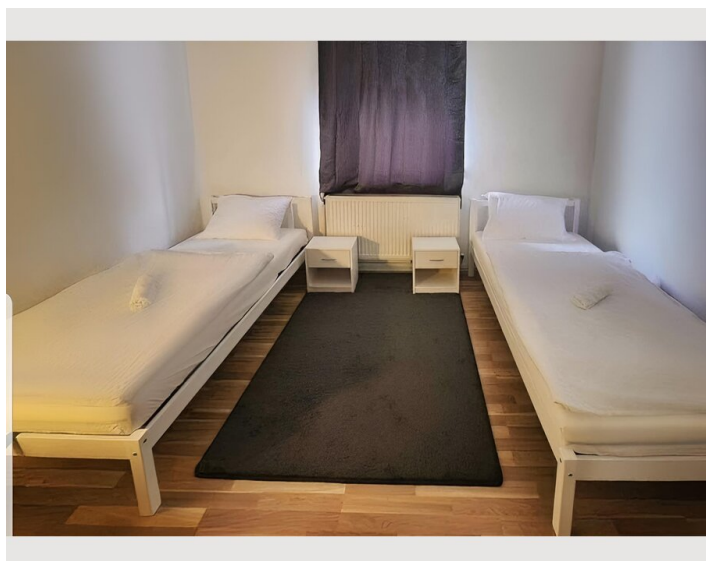
Kitchen

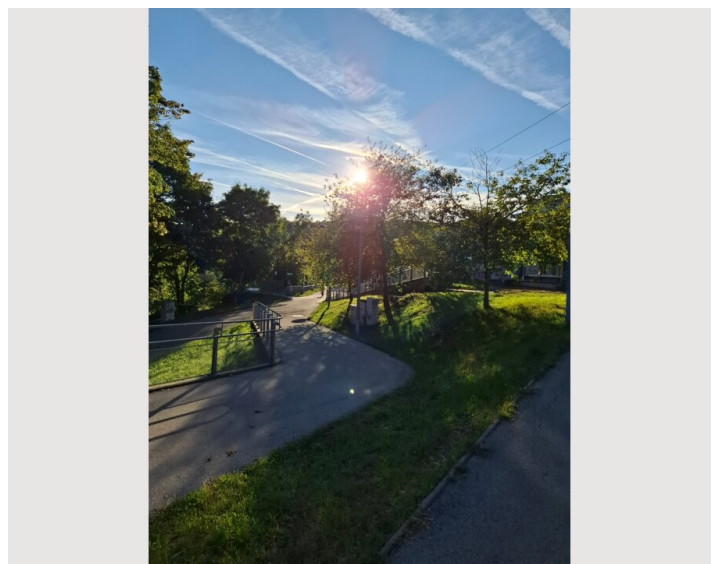
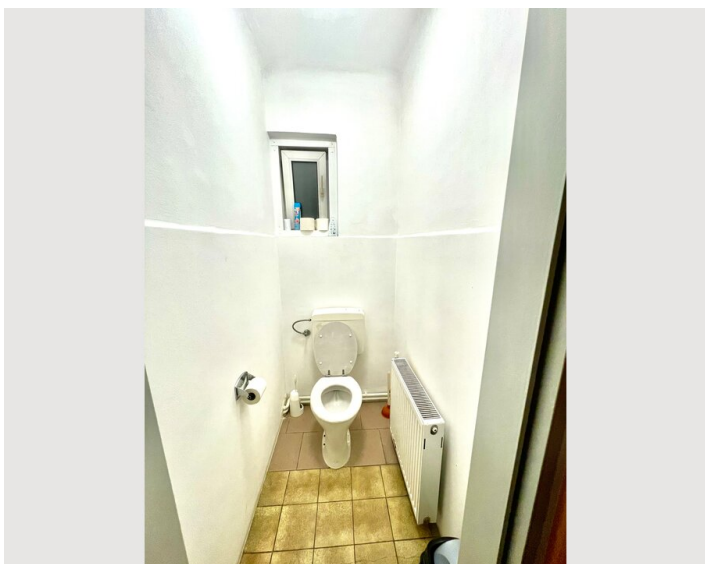
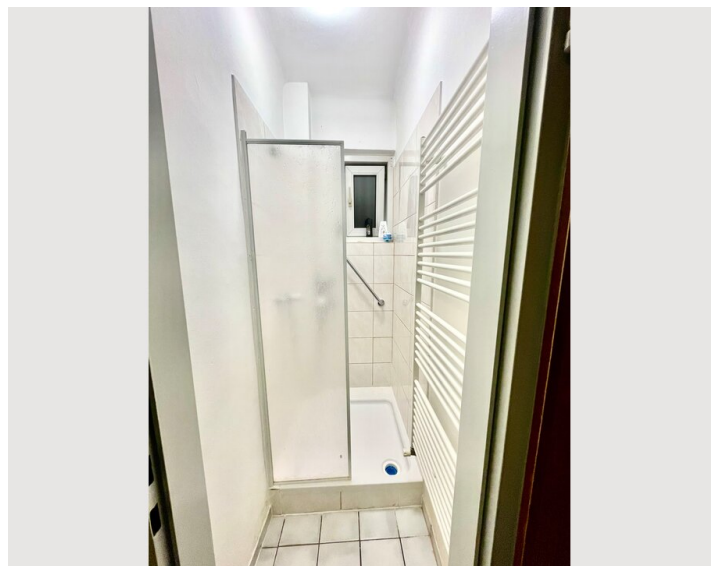
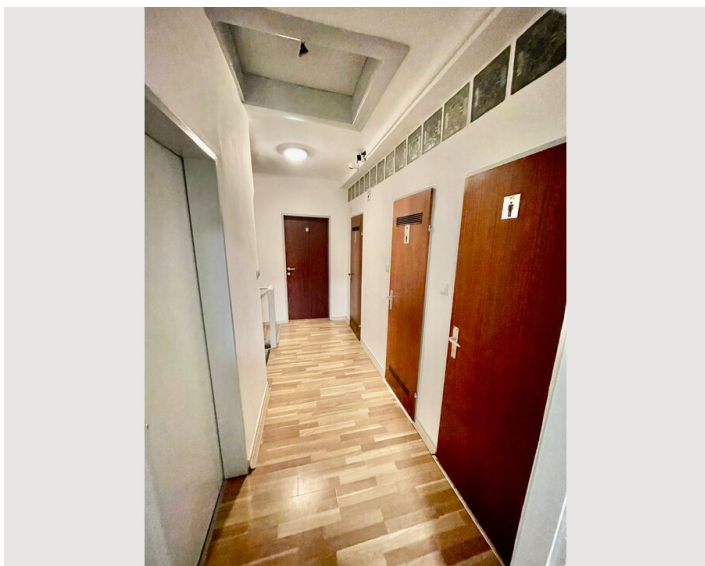
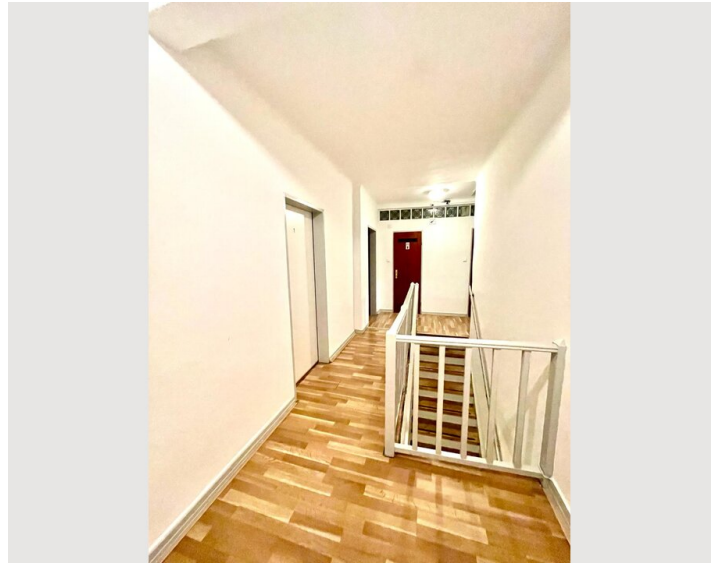
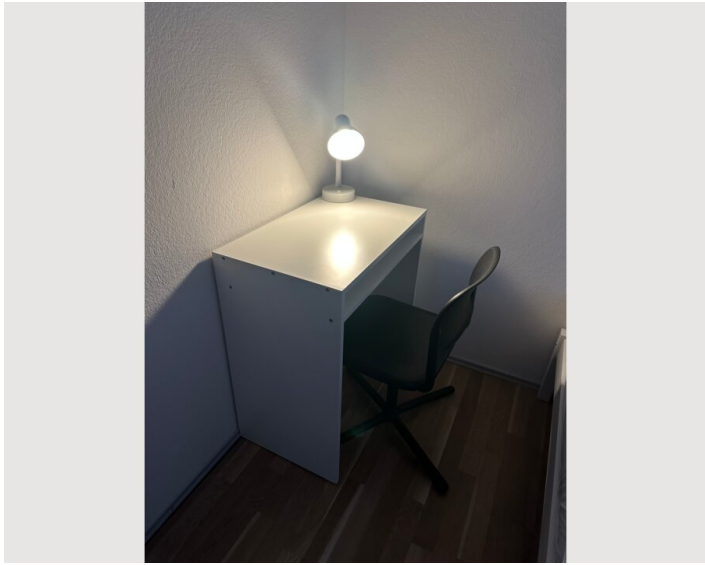
- Shared kitchen
- Microwave
- Glasses/Tableware

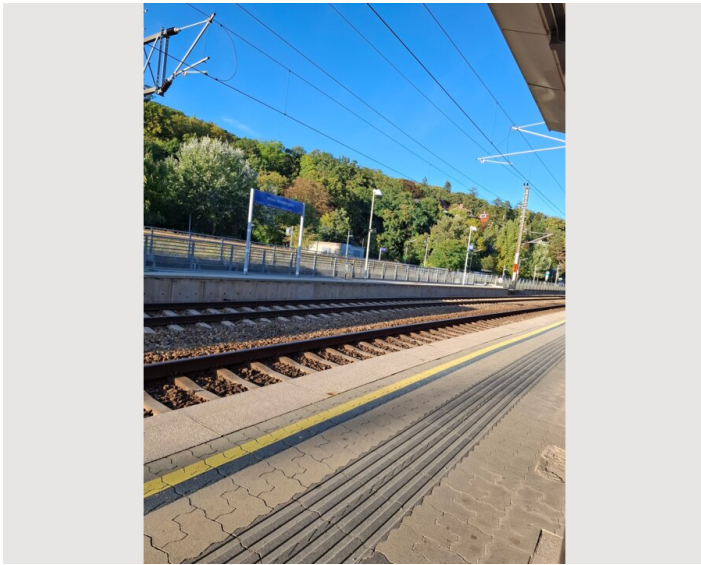
Informations

- Smoking not allowed
- Private entrance
- Regular cleaning at extra cost
- Desk/Workplace
- Pets forbidden


Picture gallery








Infrastructure

 The Weidlingau station is just a two-minute walk from the hostel.

 Herzmanskystraße 50A

 Auhof-Center

Westbahnhof is conveniently reachable by S-Bahn in just around 15 minutes. The S-Bahn station Weidlingau is only a two-minute walk from the hostel.

Location

