



3 ROOM APARTMENT, 5020 SALZBURG

## Three-bedroom-apartement

Object number: WIEK3

[View and rent online](#)

<b>Period</b>	05/04/ - 05/05/2026
<b>Number of persons</b>	2
<b>Total incl. VAT.</b>	€ 2.822,07
<b>Security deposit</b>	€ 2.300,00

This cozy home is located in a quiet yet central area near the Christian Doppler Clinic. The historic old town, the fairgrounds, the highway access, and the popular Europark shopping mall are just a few minutes away.



### Living space

75m<sup>2</sup>



### Maximum occupancy

6 Persons



### Complete accommodation <sup>?</sup>

1 Private bathroom 2 Separated bedrooms 1 Living-Sleepingroom



### 1. floor



### Check-in

00:00 - 00:00 Clock



### Check-out

00:00 - 00:00 Clock

## Sleeping options

### Sleeping room



2x Double bed (1,80 m x 2 m)

### Living & Sleeping



1x Sofa bed (2 persons)

## Descripton of accommodation

The apartment is a modern, spacious three-room unit offering plenty of space, comfort, and privacy. Guests have access to three cozy rooms, each furnished with either a double bed or a sofa bed – ideal for families, friends, or business travelers. In addition to a bathroom, there is a separate toilet. The compact kitchen is equipped with a microwave and coffee machine. The adjoining living and dining area invites you to relax and unwind at the end of the day. A private parking space completes the offer.

## Equipment & Features

### Basic equipment

- Balcony
- Parking space
- Iron & ironing board
- Private washing machine
- Vacuum cleaner

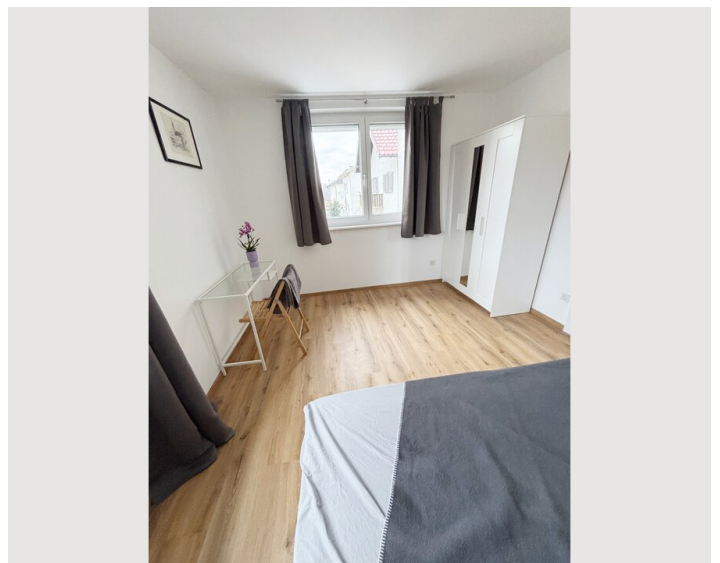
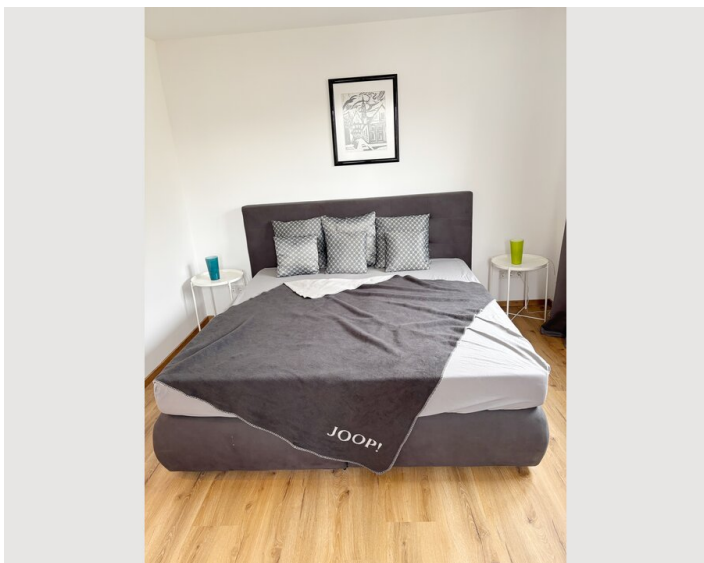
### Kitchen

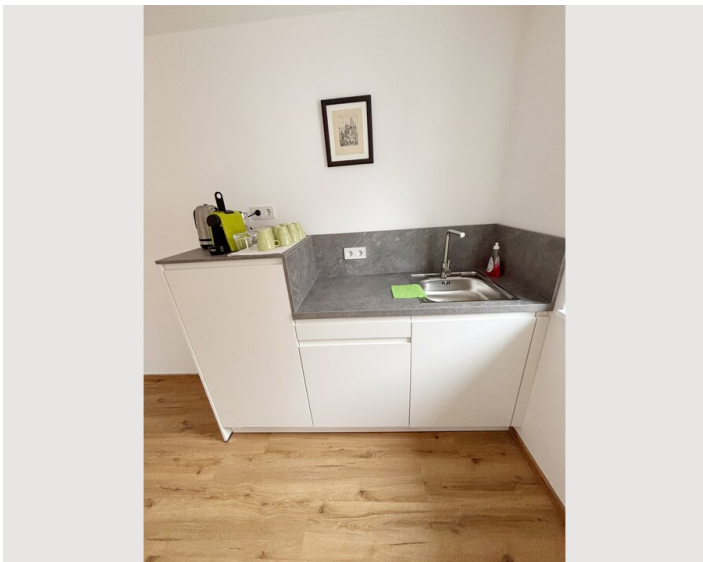
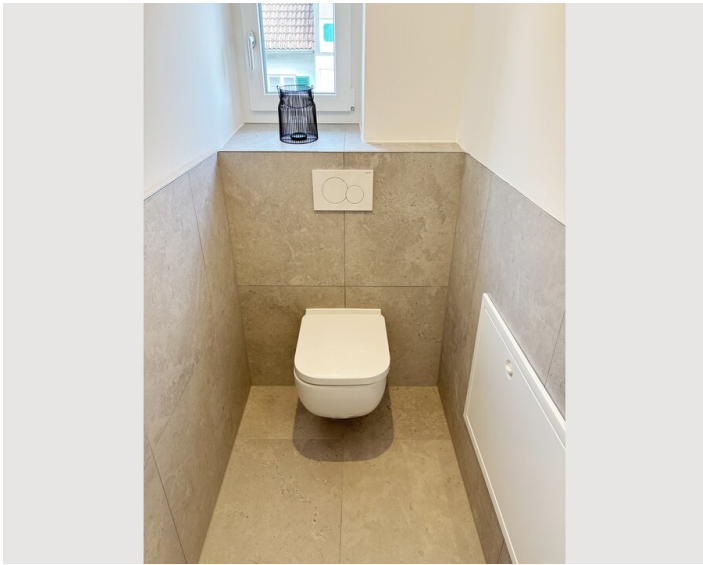
- Kitchenette
- Glasses/Tableware
- Microwave
- Cooking utensils
- Espresso machine

## Informations

- Suitable for construction workers
- Smoking not allowed
- Desk/Workplace
- Suitable for children
- Free short-term parking zone
- Pets forbidden


## Picture gallery







## Infrastructure

 300m

 3km

 2km

 300m

 1km

The apartment is very well connected to the local infrastructure. A bus stop is located just a short walk away. The highway entrance can be reached within a few minutes by car. A pharmacy and several supermarkets are also within walking distance. The exhibition and trade fair center is only a 5-minute drive away.

## Location

