



3 ROOM APARTMENT, 4040 LINZ

apartment in the villa district of Linz / Urfahr, 90 m² + terrace + garden

Object number: ARBS2

[View and rent online](#)

Exclusive living in the villa district of Linz in Urfahr, near the city center
City center reachable in 5 minutes on foot.

Period	09/03/ - 09/04/2026
Number of persons	2
Total incl. VAT.	€ 2.120,14
Security deposit	€ 1.600,00



Living space

90m²



Maximum occupancy

5 Persons



Complete accommodation [?]

1 Private bathroom 2 Separated bedrooms



Ground floor



Check-in

14:00 - 18:00 Clock



Check-out

14:00 - 18:00 Clock

Sleeping options

Bedroom 1



1x Double bed (1,60 m x 2 m)

Bedroom 2



1x Single bed



1x Bunk bed

Descripton of accommodation

The property is located in the upscale Linz-Urfahr district, less than 3 kilometers from the city center, and is surrounded by a beautiful, tranquil garden. It is situated in a peaceful, quiet residential area surrounded by greenery.

The spacious property was extensively renovated by the owners in 2020 and lovingly furnished and equipped in a retro style, ready for immediate occupancy.

The Linz-Urfahr motorway interchange (city motorway) is a 5-minute drive away.

All amenities and shopping facilities are within easy walking distance.

Equipment & Features



Basic equipment

- Terrace
- Garden sharing
- TV
- Bedclothes
- Private toilet
- Vacuum cleaner
- Cleaning utensils
- Garden
- Internet/Wifi
- Private washing machine
- Towels
- Parking on the road without time limit without any cost
- Iron & ironing board
- Hairdryer



First supply

- Toilet paper
- Soap
- Fridge filling on request
- shampoo
- Nespresso capsules



Kitchen

- Private kitchen
- Glasses/Tableware
- Filter coffee
- Microwave
- Cooking utensils
- Espresso machine
- Dishwasher

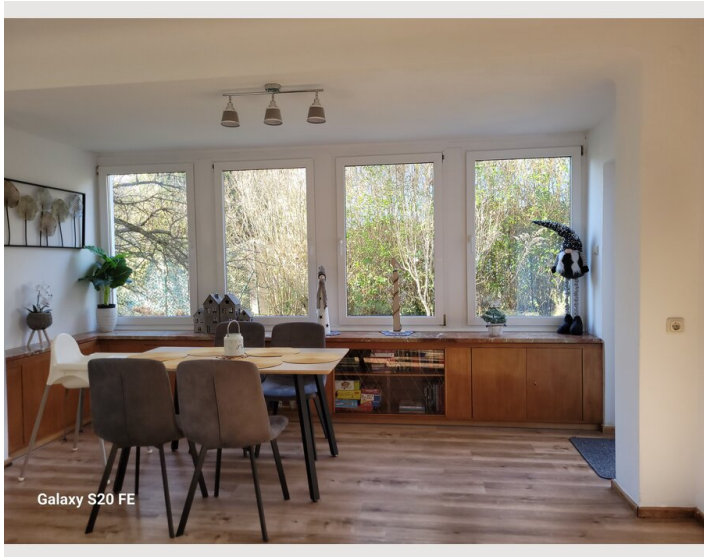
Informations

- Suitable for children
- Private entrance
- Smoking not allowed
- Pets forbidden

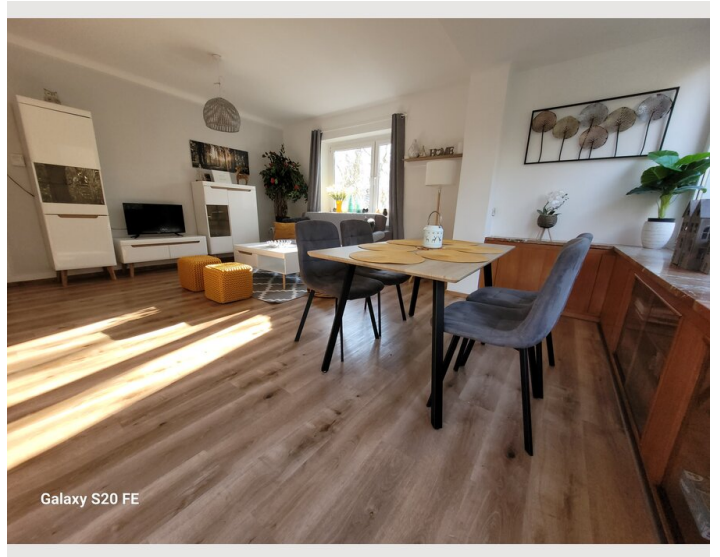
Picture gallery



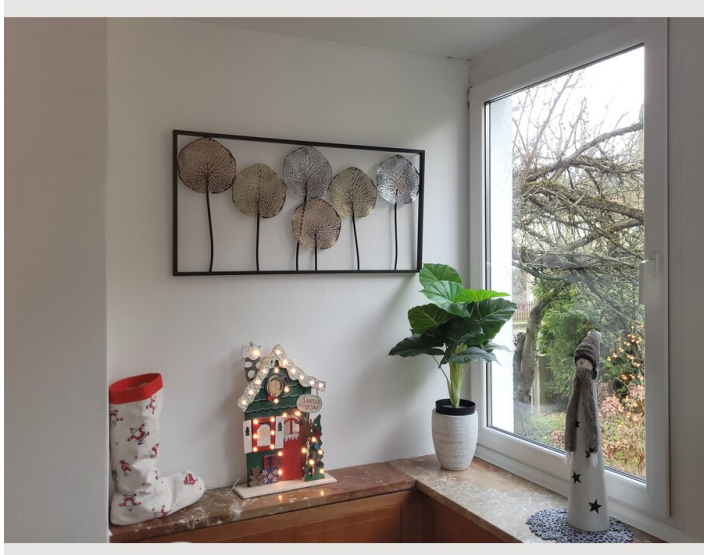
Galaxy S20 FE

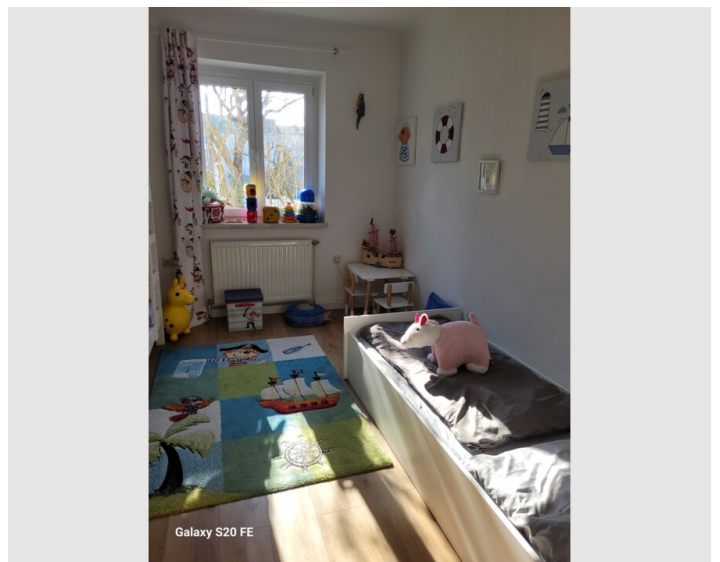
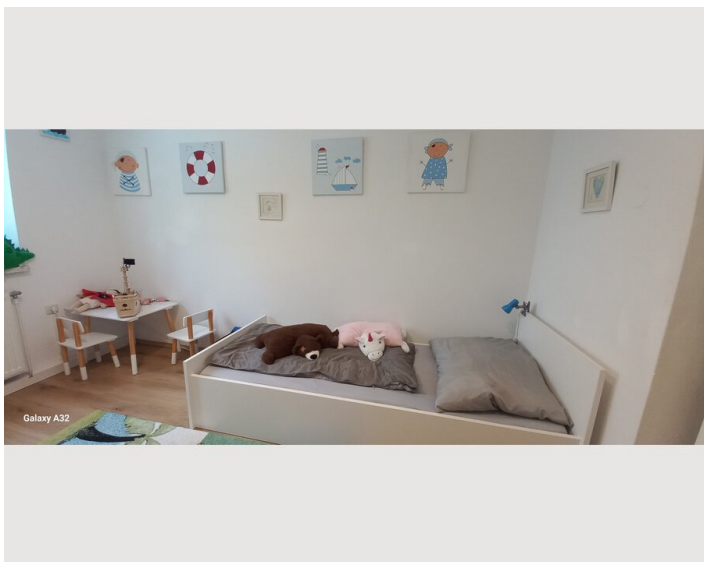
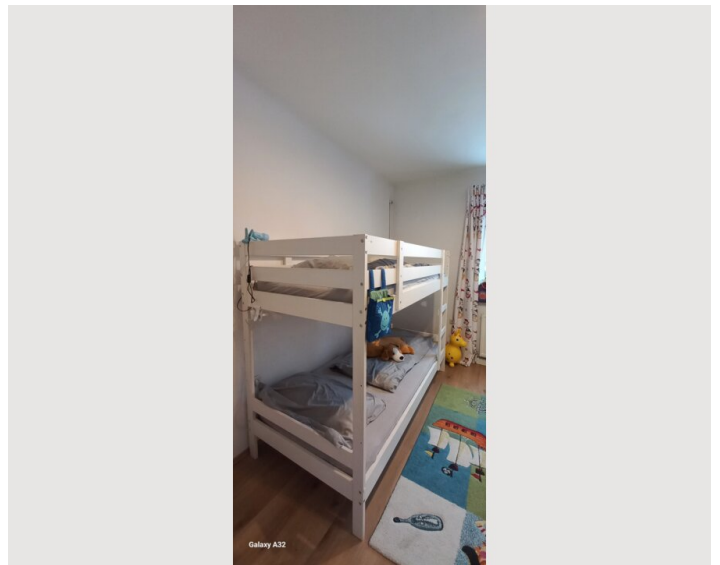
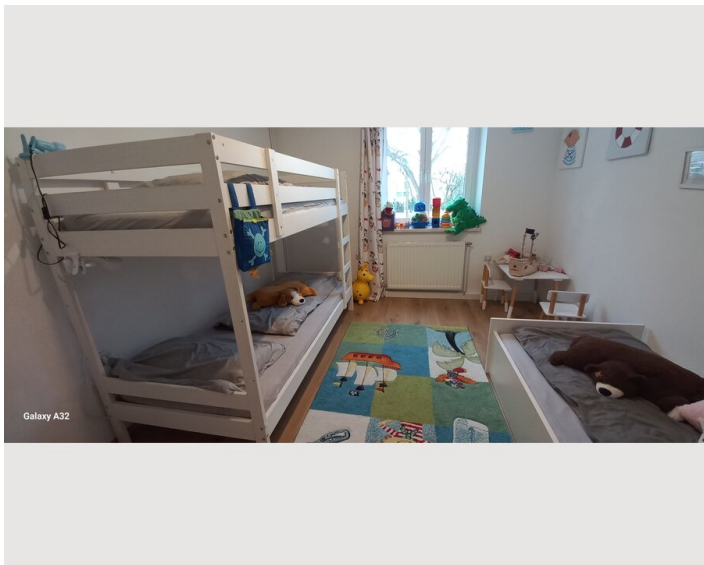
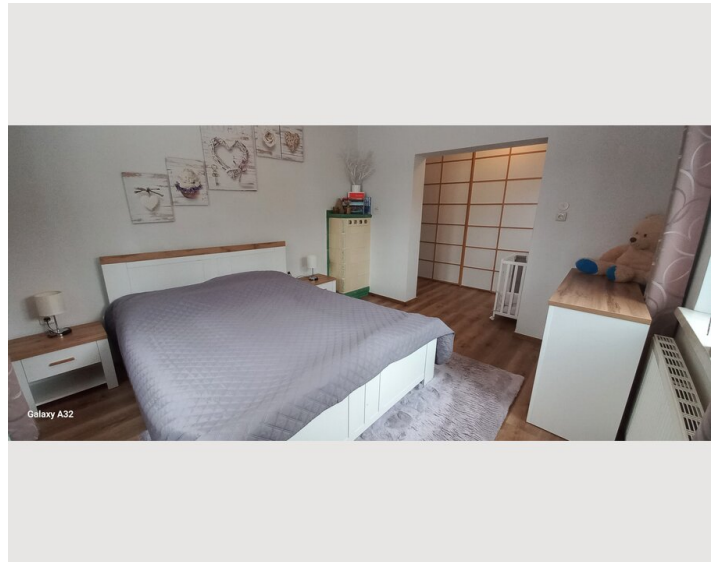


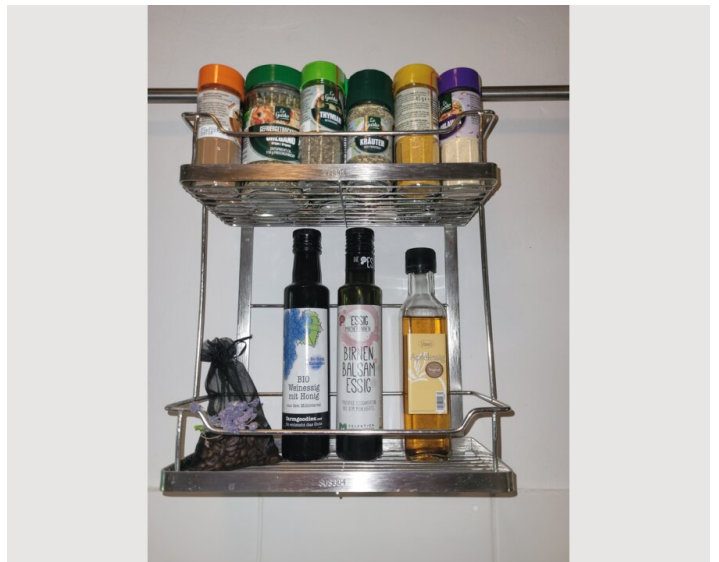
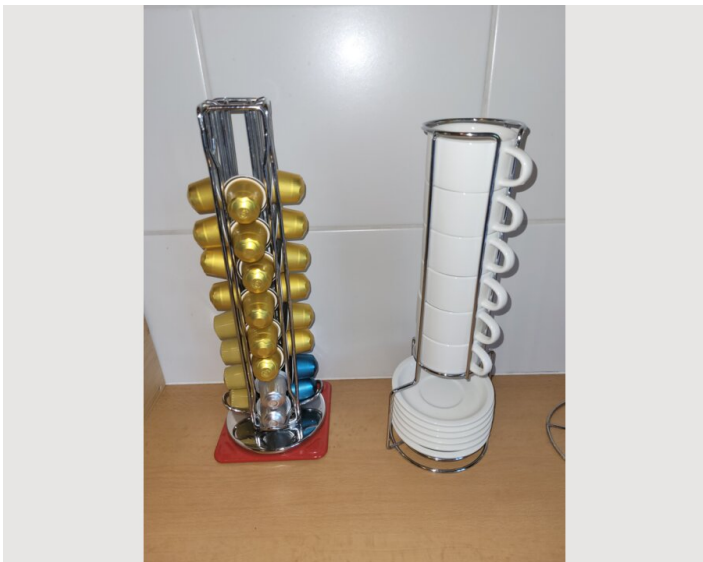
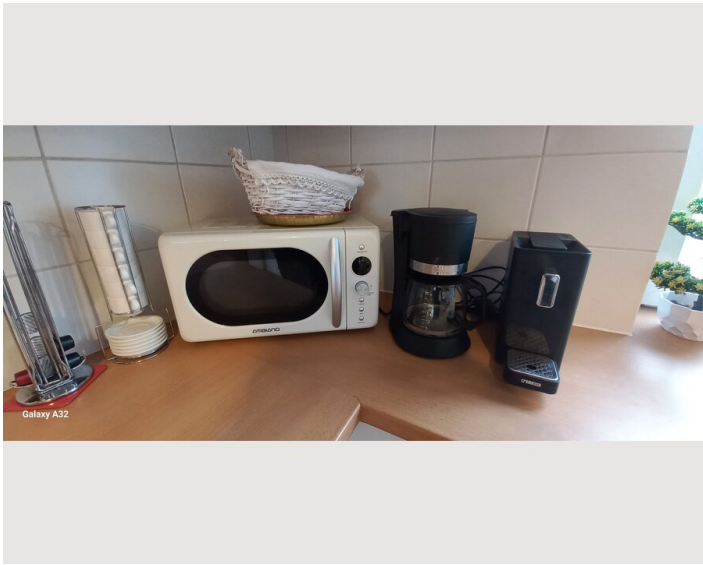
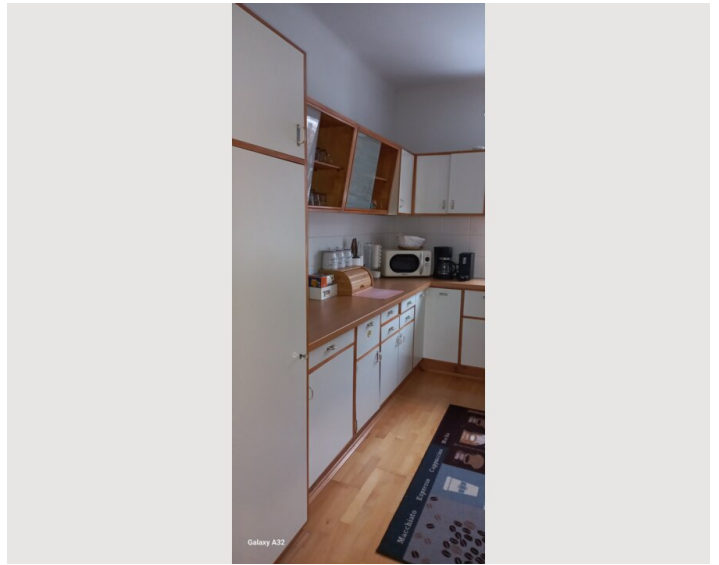
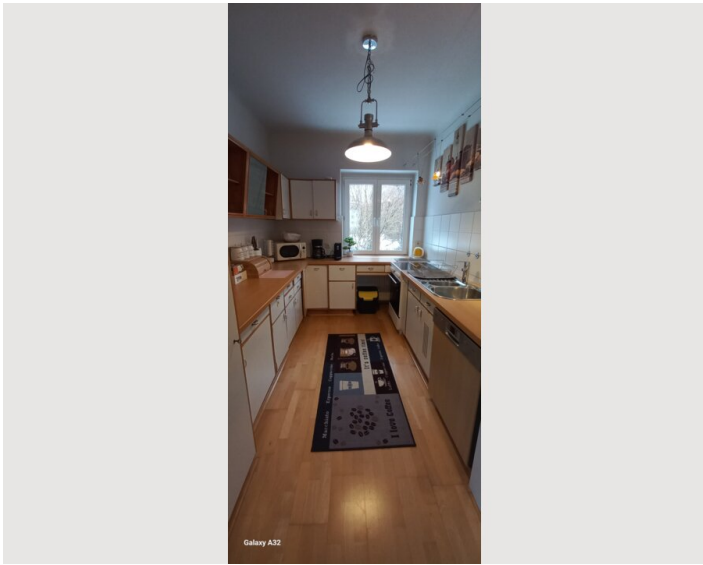
Galaxy S20 FE

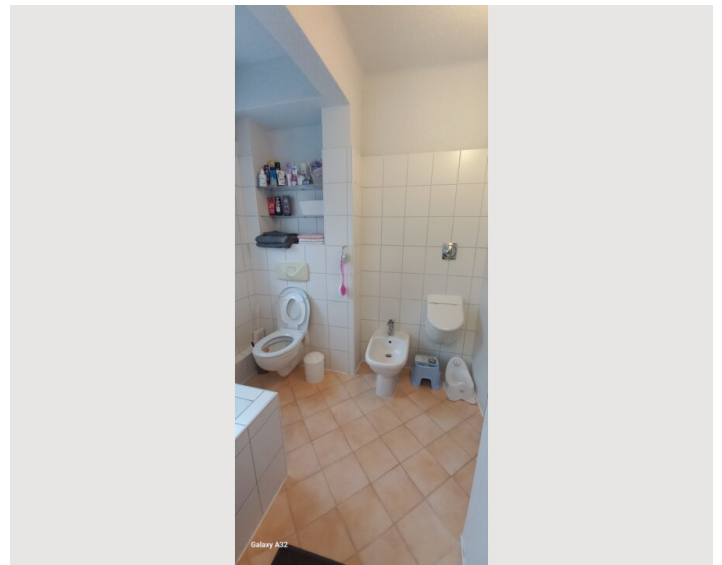
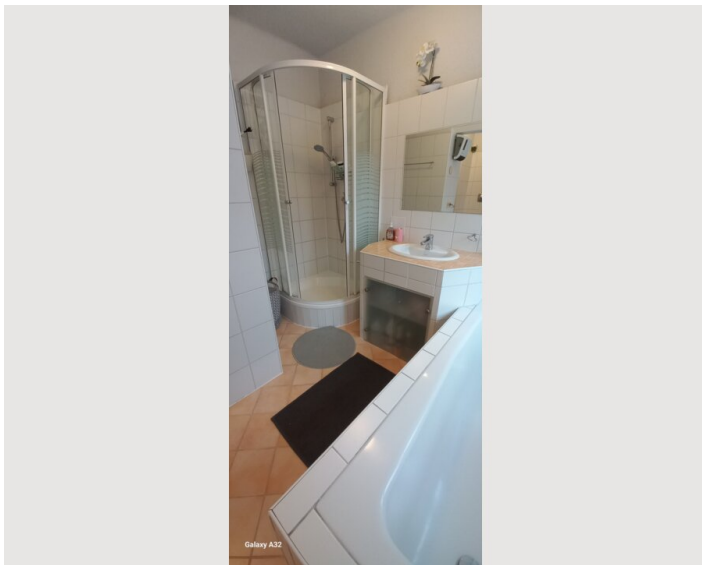
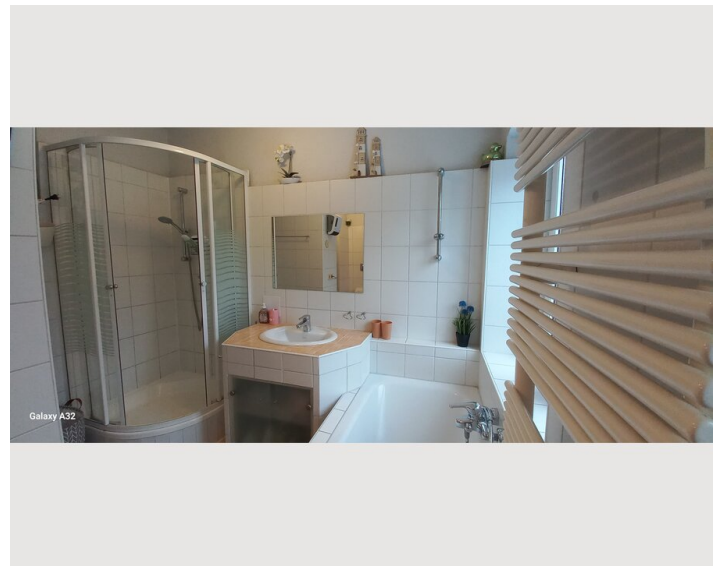


Galaxy S20 FE














Infrastructure

 10 minutes by car

 20 minutes by car

 2 minutes to go

 2 minutes to go

 5 minutes to go

Enjoy the advantages of being on the outskirts of Linz, with a village-like, rural atmosphere close to the city center. Infrastructure (shopping, schools, doctors, leisure facilities, public transport) is within walking distance!

Location

