



3 ROOM APARTMENT, 6020 INNSBRUCK

Modern penthouse with amazing view.

Object number: Frau Hitt

[View and rent online](#)

Elegantly furnished penthouse with a separate bedroom. Oak flooring, underfloor heating, air conditioning, bathtub, washing machine, open kitchen, and high-speed internet. Two balconies and a covered, furnished terrace with views of the Nordkette.

Period	03/05/ - 03/06/2026
Number of persons	2
Total incl. VAT.	€ 3.567,75
Security deposit	€ 2.500,00



Living space

71m²



Maximum occupancy

3 Persons



Complete accommodation [?]

1 Private bathroom 2 Separated bedrooms 1 Living-Sleepingroom



5. floor

Elevator available



Check-in

12:00 - 15:00 Clock



Check-out

12:00 - 15:00 Clock

Sleeping options

Bedroom 1



1x Double bed (1,60 m x 2 m)

Bedroom 2



1x Double bed (1,80 m x 2 m)

Living & Sleeping



1x Sofa bed (1 person)



1x Sofa bed (2 persons)

Descripton of accommodation

Experience living at the highest level in a bright, modern penthouse featuring stylish furnishings and an impressive view of the majestic Nordkette mountain range.

The apartment has been newly and elegantly furnished, featuring exquisite oak parquet flooring that radiates warmth and sophistication. Year-round comfort is ensured by a modern air conditioning system and pleasant underfloor heating. Upon entering the penthouse, you step directly into the spacious, light-filled living area with an open, fully equipped fitted kitchen including a breakfast bar – perfect for cooking, enjoying meals, and socializing. A cozy dining area bathed in natural light provides space for convivial gatherings, while the adjacent lounge area invites you to relax. For productive hours, a stylish desk with high-speed internet access is available – ideal for working from home.

The separate bedroom offers a quiet retreat with plenty of privacy. The newly renovated bathroom impresses with high-quality fittings, a bathtub, and an integrated washing machine – both thoughtful and functional.

Whether enjoying breakfast in the morning sunlight or unwinding at sunset: on one of the three balconies (east, west, and north-facing), you can savor a unique panorama at any time of day. The spacious, covered terrace with high-quality wooden lounge furniture invites you to linger – protected from sun and prying eyes thanks to a well-designed sun and privacy screen.

The location is as appealing as the interior: directly in front of the building, there is a tram stop, and within walking distance you will find a café, a grocery store, and a post office. The nearby outdoor and indoor swimming pools are also easily accessible on foot. And for nature lovers, the hiking trail to Seegrube is just a ten-minute walk away – perfect for outdoor enjoyment.

A home with style, light, and comfort – perfect for those seeking something special and valuing quality, atmosphere, and excellent infrastructure.

Equipment & Features

Basic equipment

- Balcony
- Loggia
- Internet/Wifi
- Private washing machine
- Bedclothes
- Private toilet
- Vacuum cleaner
- Cleaning utensils
- Terrace
- Roof-terrace
- Music system/docking station
- Private dryer
- Towels
- Aircondition
- Iron & ironing board
- Hairdryer

First supply

- Toilet paper
- Soap
- shampoo
- Fridge filling on request

Kitchen

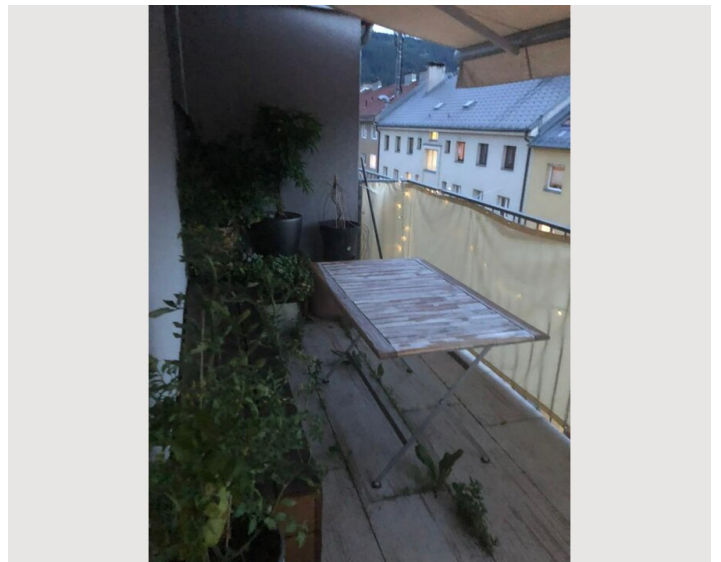
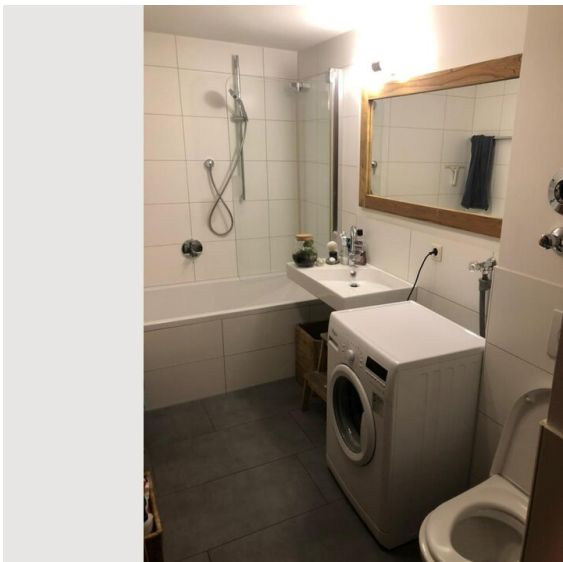
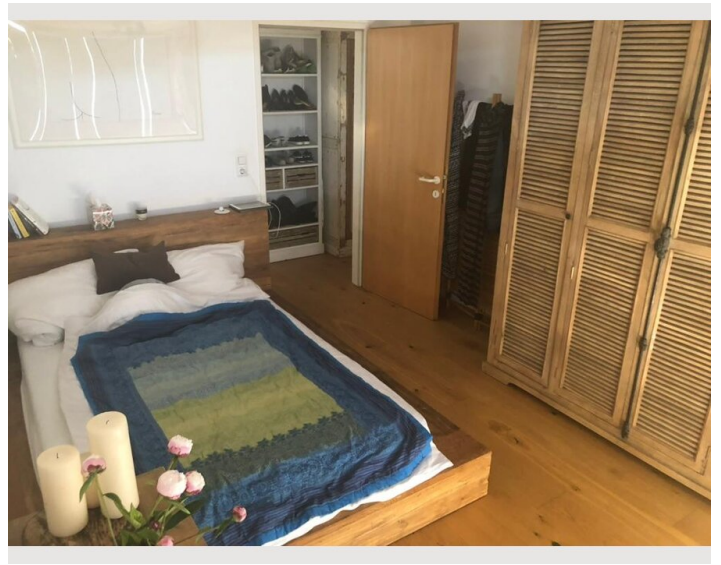
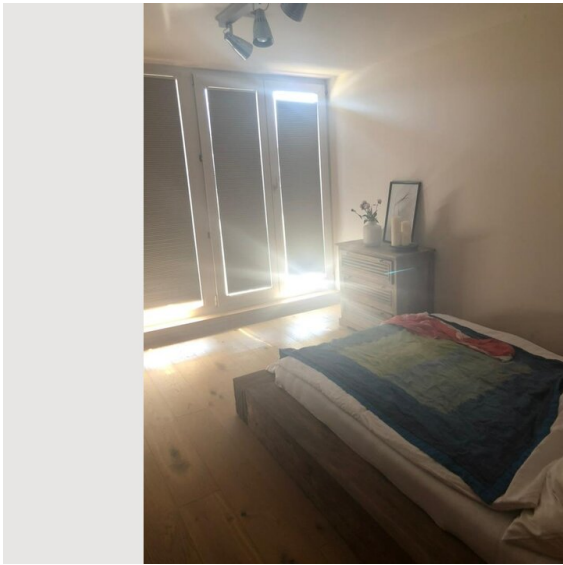
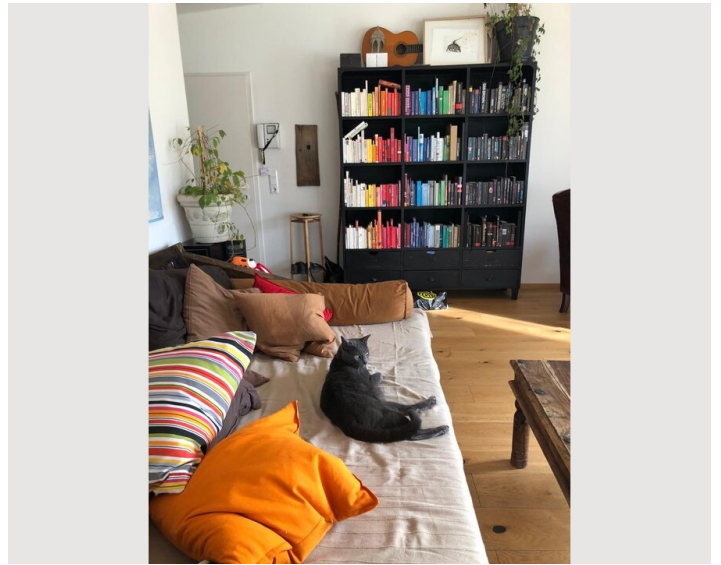
- Private kitchen
- Glasses/Tableware
- Filter coffee
- Cooking utensils
- Espresso machine
- Dishwasher

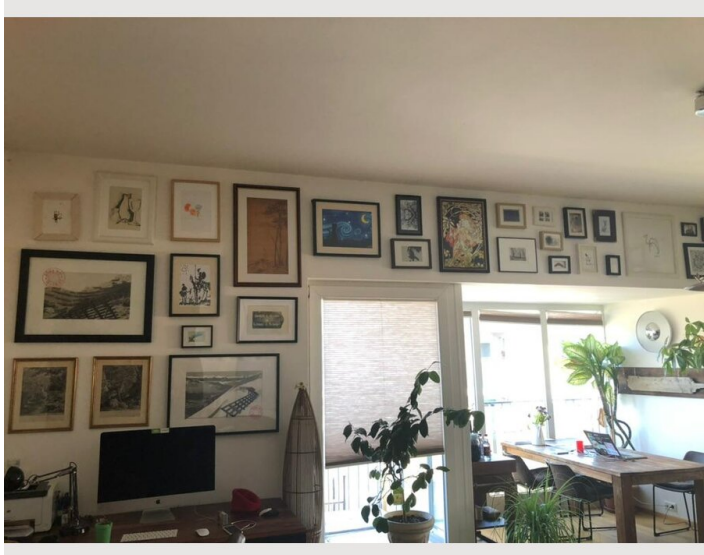
Informations

- Not suitable for children
- Desk/Workplace
- Regular cleaning at extra cost
- Short-term parking zone subject to a charge
- Pets on request
- Bicycle room free of charge


Picture gallery











Infrastructure

 Right at the building

 1 min walk

 3 stops with tram, 15 min walking distance

 Easily accessible with public transport, about 15 min by car

 5 stops with tram, 20 min walking distance

The apartment offers an excellent location: a grocery store, pharmacy, and tram stop are all nearby. The city center can be reached in about 10 minutes by public transport or bike. The outdoor and indoor swimming pools, along with other sports facilities, are within walking distance, and the nearest hiking trail to Seegrube starts just a 10-minute walk away—perfect for those who want to enjoy both city life and nature.

Location

