



2 ROOM APARTMENT, 1020 VIENNA

Prime central location near Praterstern station

Object number: VGQS1

[View and rent online](#)

A stylishly furnished two-room apartment in a central Vienna location. Excellent infrastructure and convenient access to public transportation

Period	17/12/2025 - 17/01/2026
Number of persons	2
Total incl. VAT.	€ 2.751,04
Security deposit	€ 2.100,00



Living space

65m²



Maximum occupancy

3 Persons



Complete accommodation [?]

1 Private bathroom 1 Separated bedroom



5. floor

Elevator available



Check-in

09:00 - 12:00 Clock



Check-out

14:00 - 18:00 Clock

Sleeping options

Sleeping room



1x Double bed (1,80 m x 2 m)



1x Sofa bed (1 person)

Descripton of accommodation

This bright and welcoming apartment is located on the 5th floor with elevator access and faces a quiet, green courtyard. Tastefully furnished and equipped with modern amenities, it offers a spacious kitchen with microwave, dishwasher, and fully automatic coffee machine. The dining area seats six, and the living space includes a sofa, TV, and small desk with access to the balcony. The bedroom features a large box-spring bed for two and an additional sofa bed, as well as a generous wardrobe and storage closet. A separate WC is available, while the bathroom is fitted with a walk-in shower, washbasin, washing machine, and bidet.

Equipment & Features



Basic equipment

- Balcony
- TV
- Private dryer
- Towels
- Cleaning utensils
- Internet/Wifi
- Private washing machine
- Bedclothes
- Private toilet



First supply

- Toilet paper



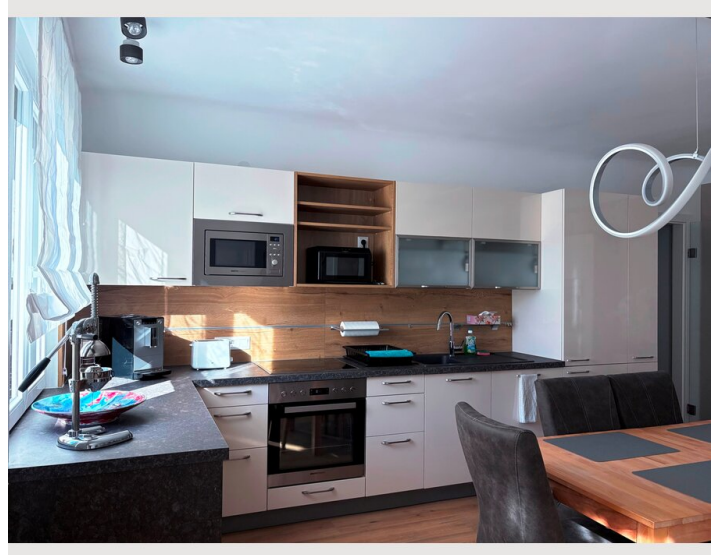
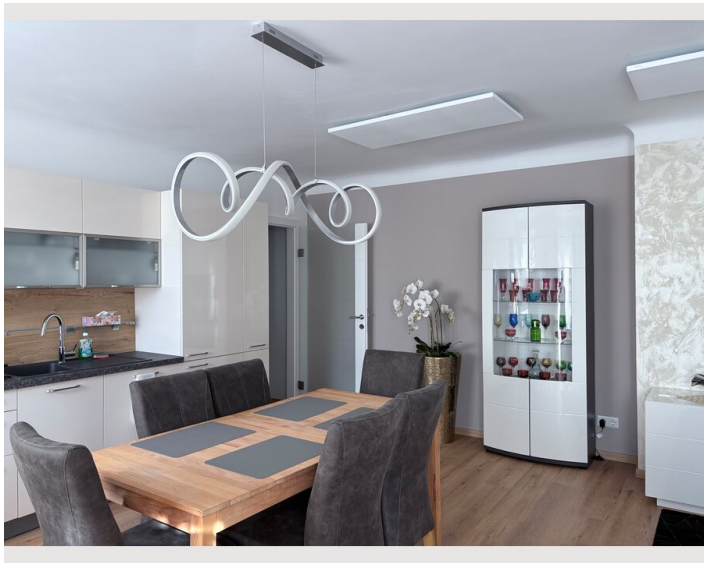
Kitchen

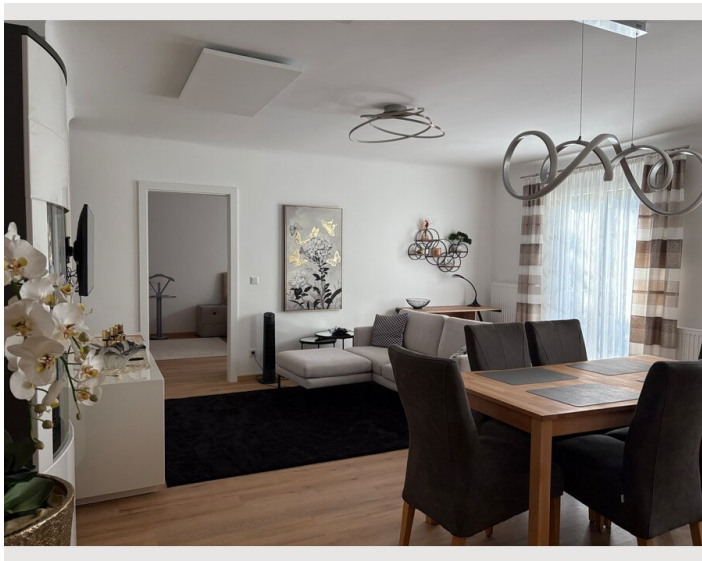
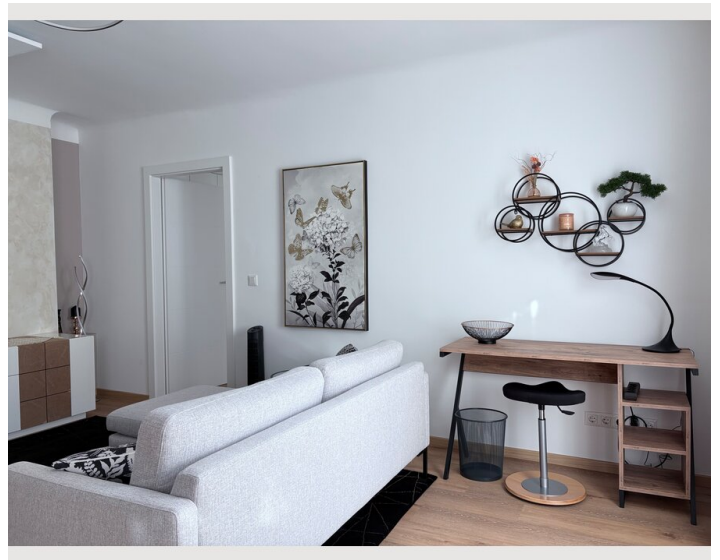
- Private kitchen
- Glasses/Tableware
- Dishwasher
- Cooking utensils
- Espresso machine
- Microwave

Informations


- Suitable for children
- Short-term parking zone subject to a charge
- Pets forbidden
- Smoking not allowed
- Desk/Workplace


Picture gallery





Infrastructure

 Praterstern station with underground lines U1 and U2 as well as suburban rail lines S1, S2 and S3

 within a one-minute walking distance

The apartment is very well connected to Vienna's public transport network. Praterstern station is just a few minutes' walk away, offering access to underground lines U1 and U2, suburban rail lines S1, S2, and S3, as well as various regional trains and trams. The historic city center (1st district) can also be reached within a short walking distance. A supermarket and a pharmacy are located in the immediate vicinity

Location

