



STUDIO APARTMENT, 5020 SALZBURG

City apartment with breakfast loggia

Object number: BEHC1

[View and rent online](#)

Period	08/12/2025 - 08/01/2026
Number of persons	2
Total incl. VAT.	€ 1.552,26
Security deposit	€ 1.000,00

Ideally located studio apartment with a small loggia and fortress view. 100 meters from the main station, shops (supermarket open daily from 6 a.m. to 11 p.m., bakery, drugstore, pharmacy, tobacco shop, fashion store), restaurants, post office, gym.



Living space

28m²



Maximum occupancy

2 Persons



Complete accommodation [?]

1 Private bathroom 1 Living-Sleepingroom



2. floor

Elevator available



Check-in

00:00 - 23:00 Clock



Check-out

07:00 - 14:00 Clock

Sleeping options

Living and sleeping



1x Double bed (1,60 m x 2 m)

Descripton of accommodation

The compact apartment impresses with its well-thought-out layout and efficient use of every square meter. It is located on the 2nd floor and is easily accessible via an elevator. The small yet thoughtfully designed entrance area provides ample storage space for jackets, shoes, and household items through large cabinets. The living and sleeping area is designed as an open-plan space. A space-saving kitchenette integrates seamlessly into the living zone, and large windows, along with the adjacent loggia, create an open and airy atmosphere despite the compact size. The design and furnishings may differ from the pictures due to planned renovations.

A washing machine and dryer are available in the basement for all residents of the building for a fee.

A bicycle cellar is available in the house free of charge.

Underground parking can be requested for a fee, but cannot be guaranteed.

Equipment & Features



Basic equipment

- Balcony
- TV
- Community dryer
- Towels
- Vacuum cleaner
- Cleaning utensils
- Loggia
- Community washing machine
- Bedclothes
- Private toilet
- Iron & ironing board
- Hairdryer



First supply

- Toilet paper
- Soap
- shampoo
- Nespresso capsules



Kitchen

- Kitchenette
- Glasses/Tableware
- Cooking utensils
- Espresso machine

Informations

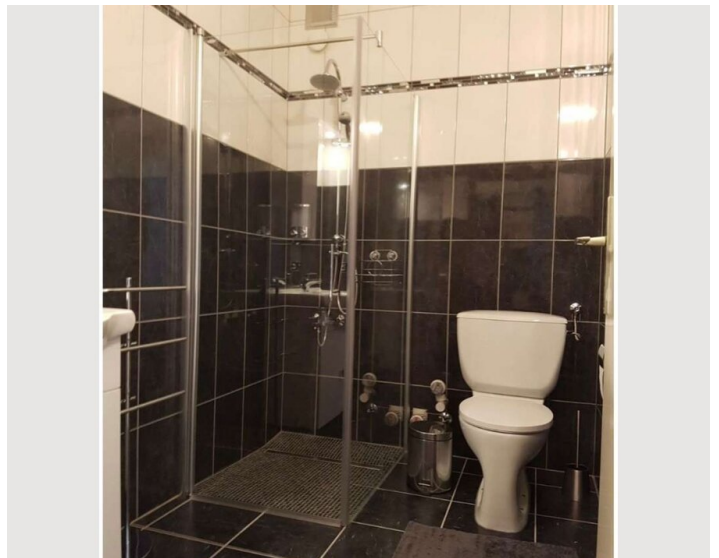
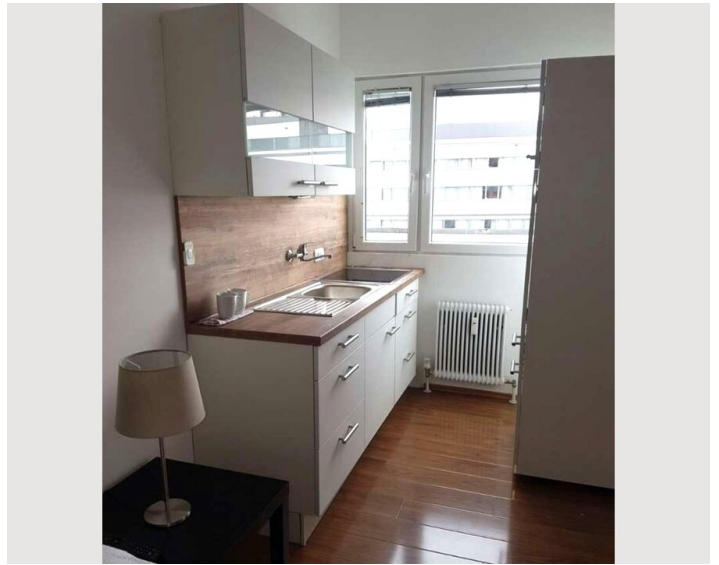
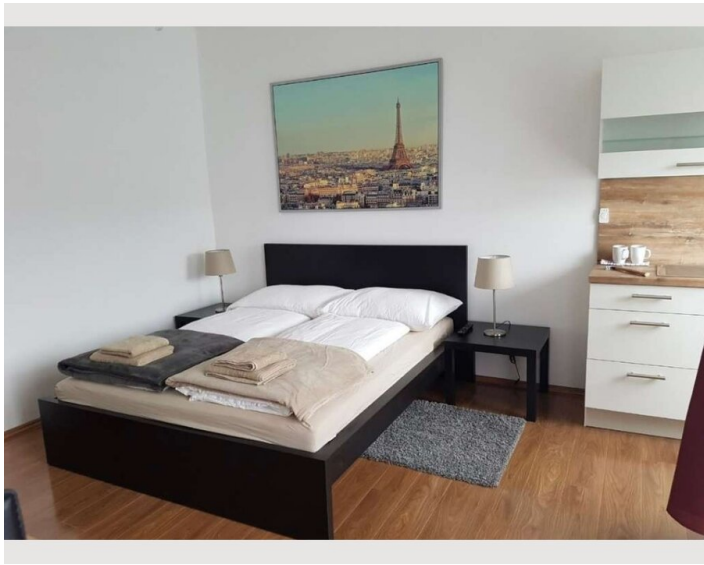
- Smoking not allowed
- Pets forbidden
- Bicycle room free of charge
- Short-term parking zone subject to a charge
- Regular cleaning at extra cost

Additional services

- Underground parking on request (€ 130,00)


All prices are gross per month - billing is done directly with the lessor.


Picture gallery




Infrastructure

 0 m

 50 m

 100 m

 5 km, reachable by bus and train in 20 minutes

Located two floors above the Forum Shopping Center and on the train station side, in front of the new administrative center. In the immediate vicinity of the main train station and bus station, it's an ideal starting point for short trips by bus and train. It offers convenient shopping (a supermarket open daily from 6 a.m. to 11 p.m., a bakery, drugstore, pharmacy, tobacco shop, and fashion store), restaurants, cafes, a post office, and a fitness center. The city center is a 15-minute walk away, or just a few minutes away by bike, bus, or train.

Location

