



2 ROOM APARTMENT, 1020 VIENNA

Bright & Modern Apartment – Walk to Center & Prater

Object number: DSQH1

[View and rent online](#)

| | |
|--------------------------|-------------------------|
| Period | 08/12/2025 - 08/01/2026 |
| Number of persons | 2 |
| Total incl. VAT. | € 1.524,34 |
| Security deposit | € 1.200,00 |

Bright, modern 50 m² apartment with balcony in a quiet yet central location near Praterstern. Perfect for singles or couples. Excellent transport links, fully equipped, cozy and ready to feel at home.



Living space

50m²



Maximum occupancy

2 Persons



Complete accommodation [?]

1 Private bathroom 1 Separated bedroom



5. floor

Elevator available



Check-in

09:00 - 20:00 Clock



Check-out

09:00 - 20:00 Clock

Sleeping options

Sleeping room



1x Double bed (1,80 m x 2 m)

Descripton of accommodation

This stylish and fully furnished 50 m² apartment with a 7 m² loggia offers everything you need for a comfortable stay in Vienna's 2nd district.

Located on a quiet, traffic-calmed street, yet just minutes away from Praterstern (U1/U2) and tram lines O, 5, 2, 12. The bright and well-designed layout includes a separate bedroom, a fully equipped kitchen, and a modern bathroom. Nearby you'll find supermarkets (Billa, Spar, Hofer), cafés, a bakery, pharmacy, fitness center, bookstore, and more. The building features a bike storage room and a shared rooftop terrace for residents. Perfect for professionals, digital nomads, or couples looking for a peaceful home close to the city center.

Equipment & Features



Basic equipment

- Loggia
- Private washing machine
- Towels
- Vacuum cleaner
- Cleaning utensils
- Internet/Wifi
- Bedclothes
- Private toilet
- Iron & ironing board
- Hairdryer



First supply

- Toilet paper
- Soap
- shampoo
- Fridge filling on request



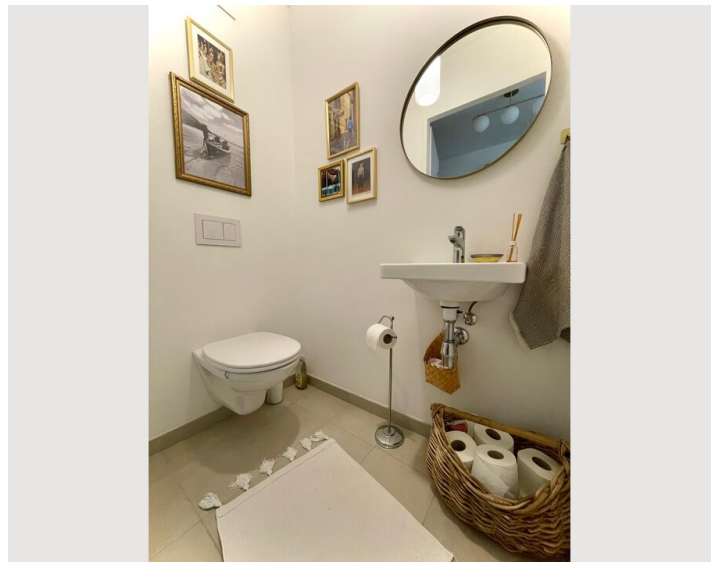
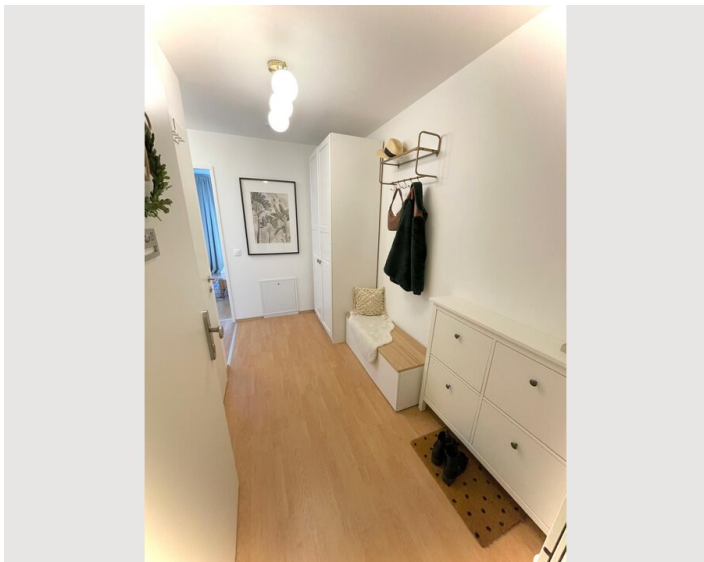
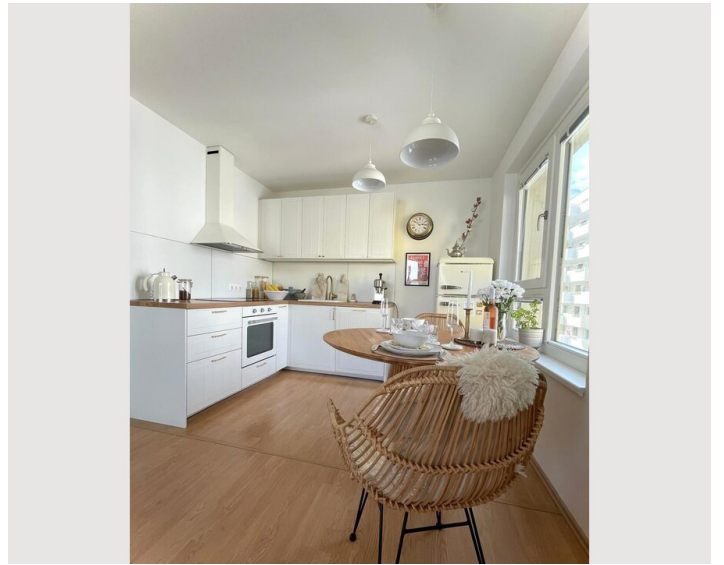
Kitchen

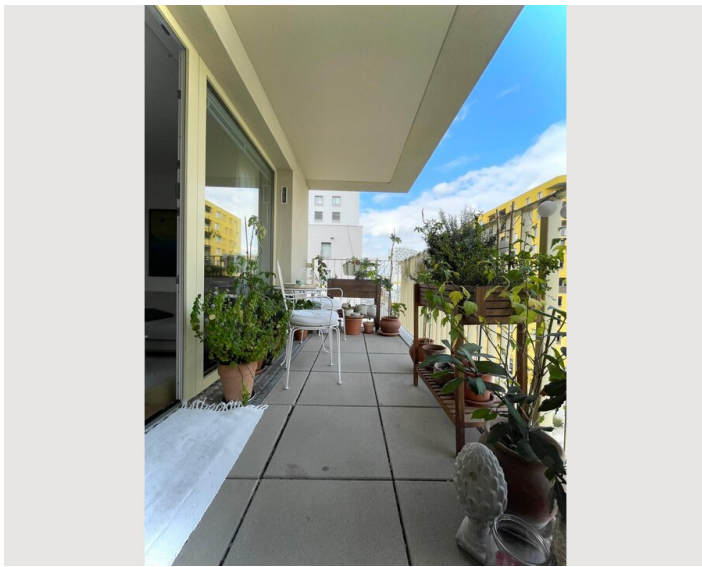
- Private kitchen
- Glasses/Tableware
- Dishwasher
- Cooking utensils
- Espresso machine

Informations






- Not suitable for children
- Short-term parking zone subject to a charge
- Pets on request
- Bicycle room free of charge
- Smoking not allowed
- Private entrance
- Regular cleaning at extra cost

Picture gallery





Infrastructure

-  Train Station Praterstern 5 min walking distance or with the tram
-  5 min to the next underground and 3 stations to the city center
-  3 supermarkets near by
-  30 min to the Main Station (Südtiroler Platz)
-  30 min to the airport by train from Praterstern

Inventory / Amenities

Fully equipped kitchen (stove, oven, fridge, dishwasher, dishes, and cookware)

Washing machine & drying rack

High-speed Wi-Fi & smart TV

Comfortable double bed and large wardrobe

Dining area and cozy living room with sofa

Modern bathroom with shower & hairdryer

7 m² loggia (balcony) with seating

Iron, ironing board, and cleaning supplies

Location

