



HOUSE, 4020 LINZ

Tiki Urban Oasis

Object number: LESE7

[View and rent online](#)

This charming house combines city lifestyle with rural flair. The quiet residential location with its beautiful garden and pool offers relaxation after a busy day at work.

Period	27/05/ - 27/06/2026
Number of persons	2
Total incl. VAT.	€ 2.950,33
Security deposit	€ 2.100,00



Living space

150m²



Maximum occupancy

6 Persons



Complete accommodation [?]

1 Shared bathroom 2 Separated bedrooms 1 Living-Sleepingroom



1. floor



Check-in

13:00 - 20:00 Clock



Check-out

00:00 - 10:00 Clock

Sleeping options

Bedroom 1



1x Double bed (1,80 m x 2 m)

Bedroom 2



2x Single bed

Living & Sleeping



1x Sofa bed (2 persons)

Descripton of accommodation

Highlights:

- ✓ 150 m² with original stucco ceilings
- ✓ Charming living: Spacious living room & private fireplace room – ideal for cozy evenings!
- ✓ Dedicated workspace on the first floor
- ✓ Sunny terrace with garden views: Private pool surrounded by sunny flowerbeds
- ✓ Modern bathroom with bathtub and shower
- ✓ Premium features: Covered carport, basement & high-quality cherry wood furniture
- ✓ Dream location – nature right on your doorstep: The house is just a 5-minute walk from the Wasserwald (Water Forest).

Amenities:

- 📺 Brand-name fitted kitchen with dishwasher
- 📺 Workspace
- 📺 Wi-Fi
- 📺 Bathroom with shower and bathtub and two separate toilets
- 📺 Two bright bedrooms upstairs (sleeps up to 6)
- 📺 Dressing room/office upstairs
- 📺 Basement with storage space and washing machine

Location advantages:

- 📺 3-minute walk to the Wimmerstraße tram stop, and 15 minutes by tram to the city center
- 📺 10-minute drive to the industrial area (e.g. Voestalpine, Bosch, etc.)
- 📺 Supermarket 5-minute walk
- 📺 Adjacent to the Wasserwald (a wooded area) for jogging and walking

Pets are not allowed.

Equipment & Features



Basic equipment

- Terrace
 - Internet/Wifi
 - Private washing machine
 - Towels
 - Private parking space
 - Cleaning utensils
 - Garden
 - TV
 - Bedclothes
 - Private toilet
 - Vacuum cleaner
-



Pool

- Outdoor Pool
-



First supply

- Toilet paper
 - Soap
 - Fridge filling on request
-



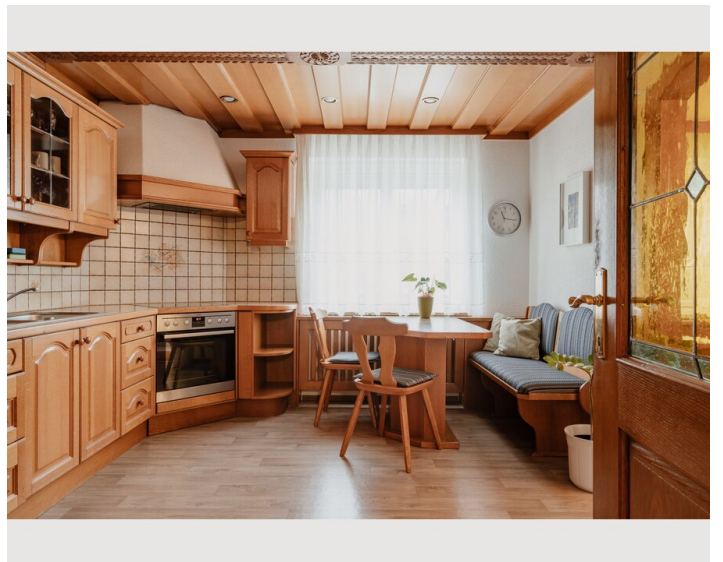
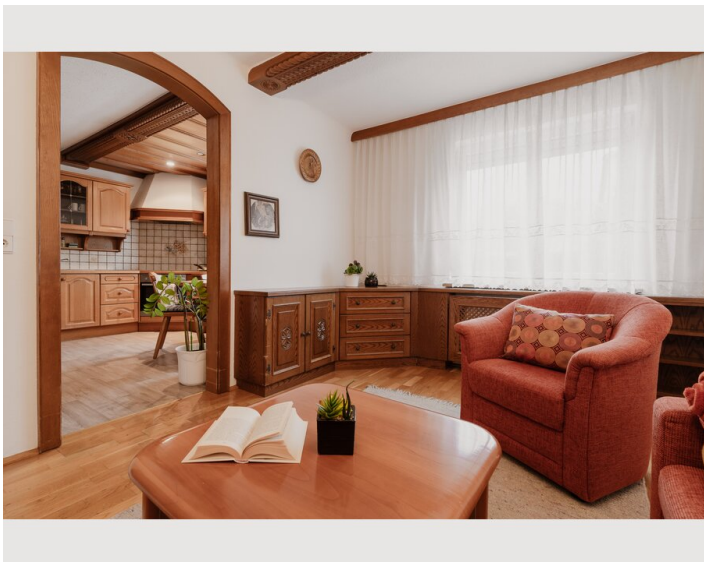
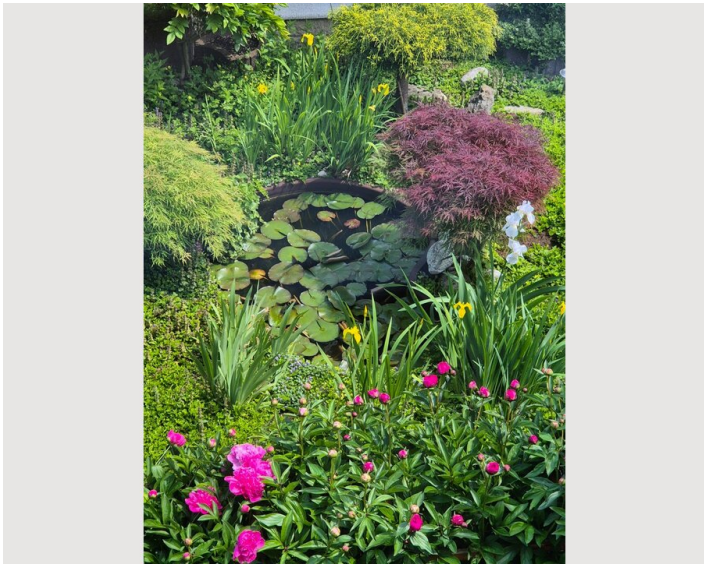
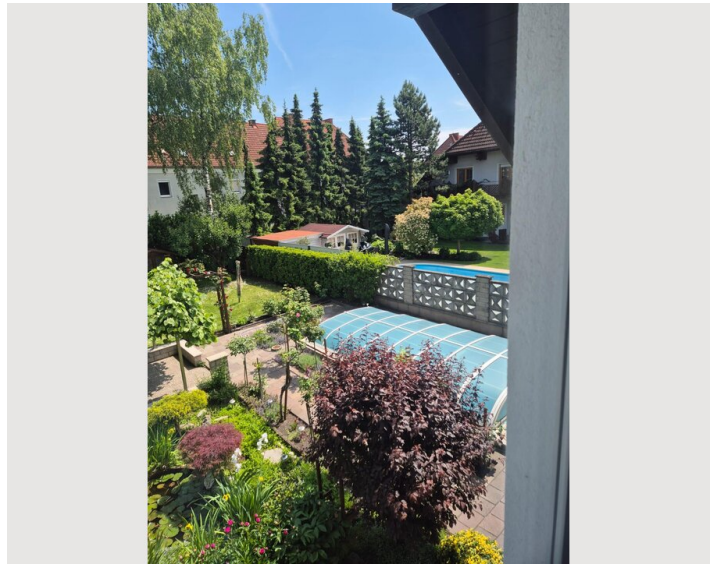
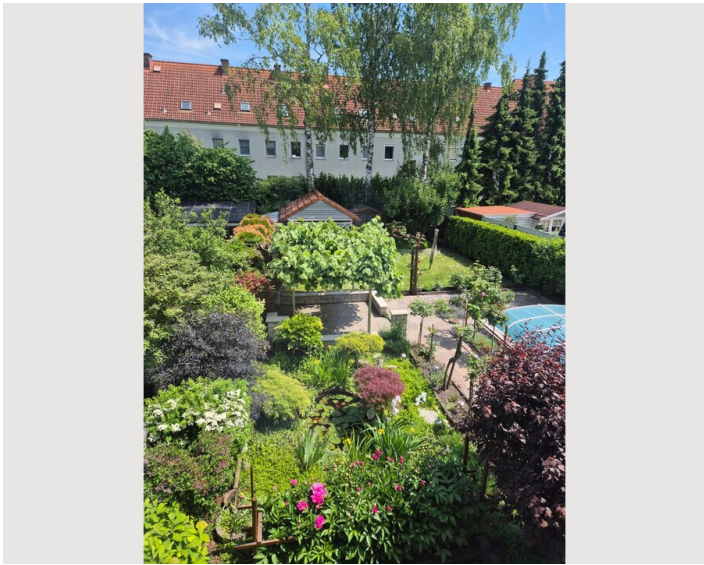
Kitchen

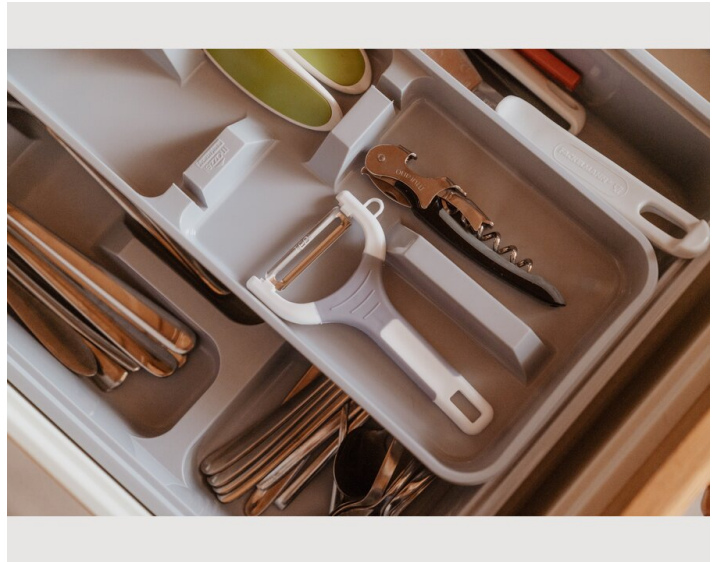
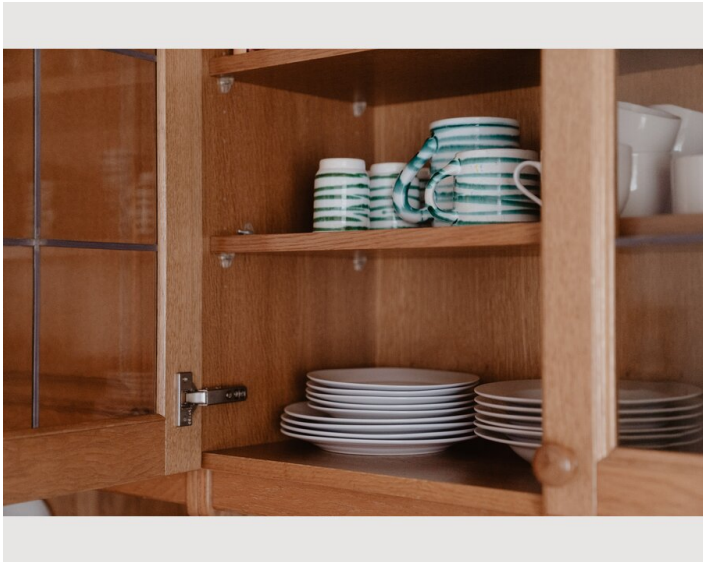
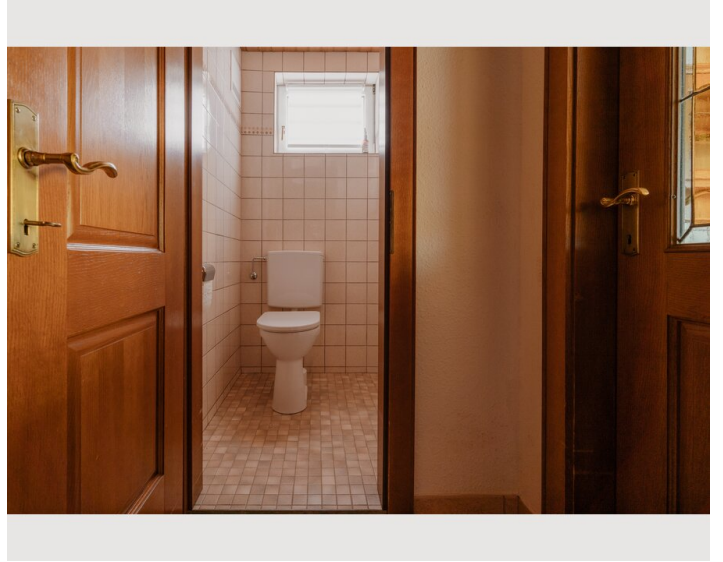
- Private kitchen
- Glasses/Tableware
- Dishwasher
- Cooking utensils
- Filter coffee
- Microwave

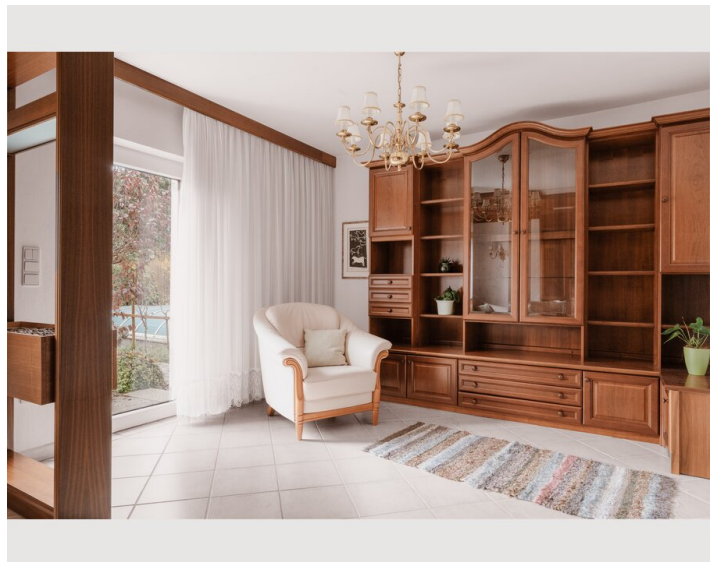
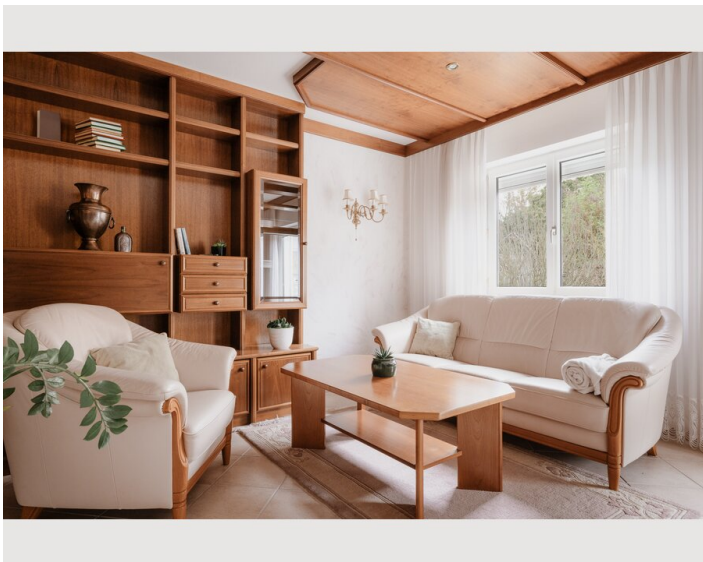
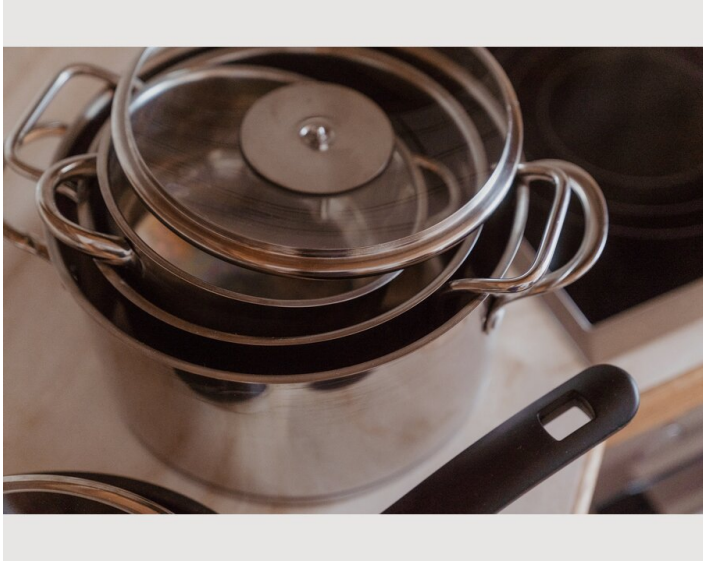
Informations

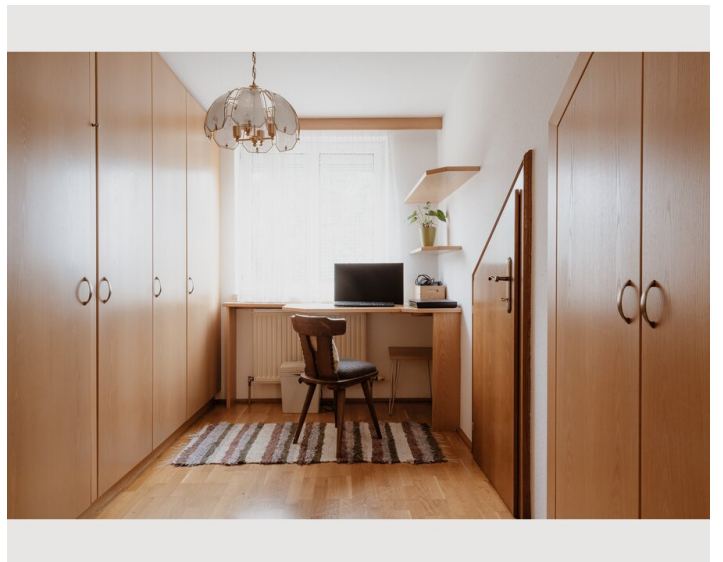
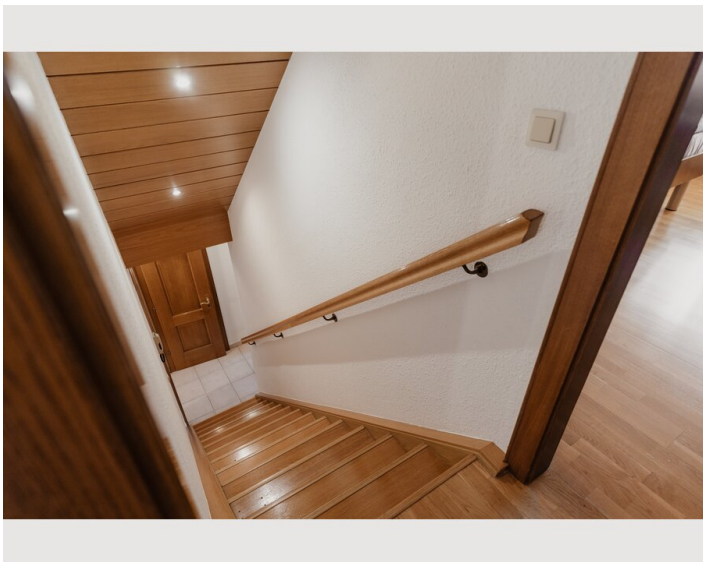
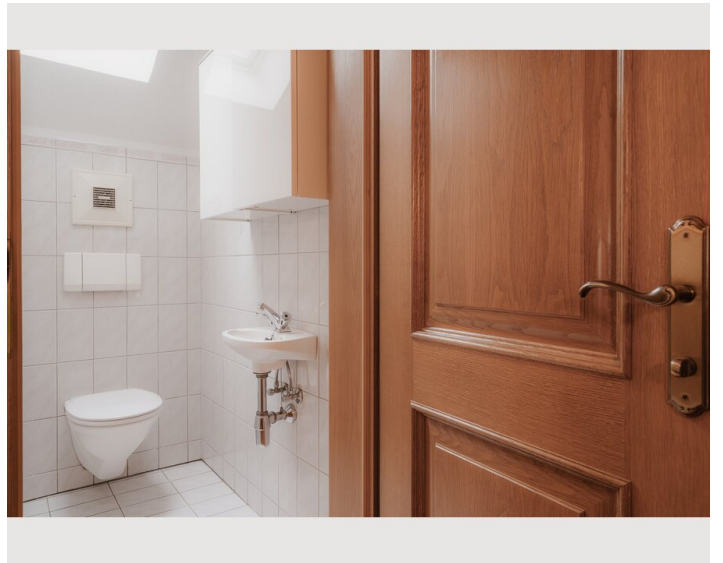
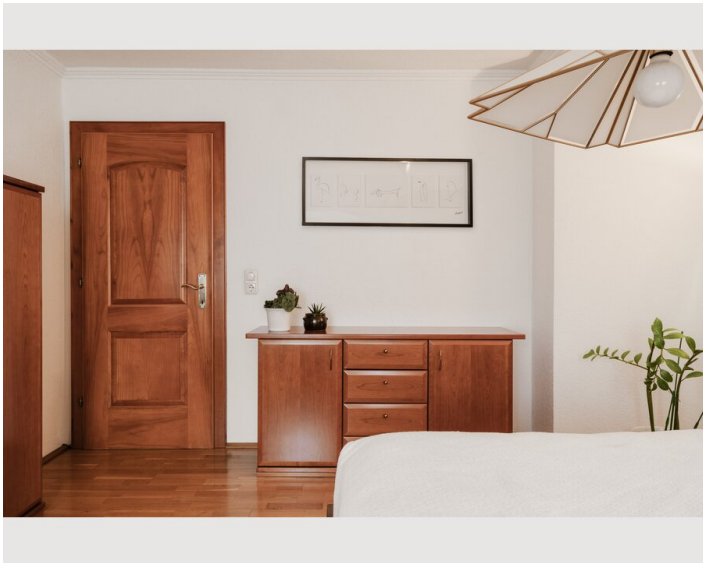
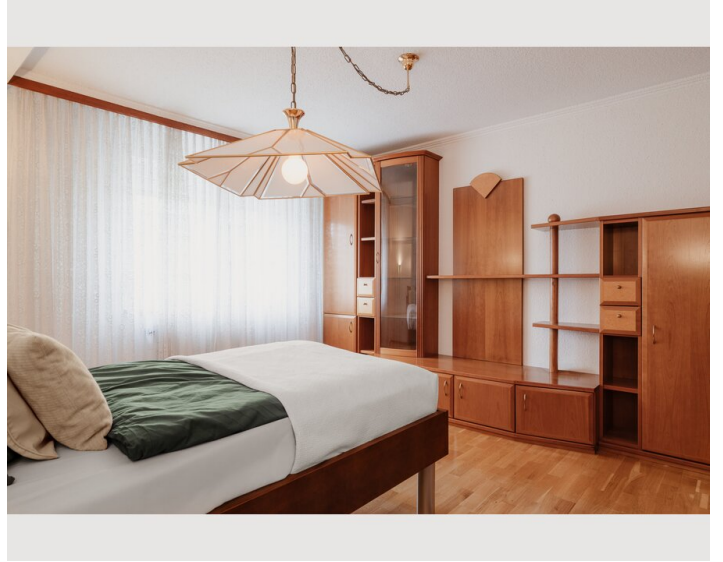
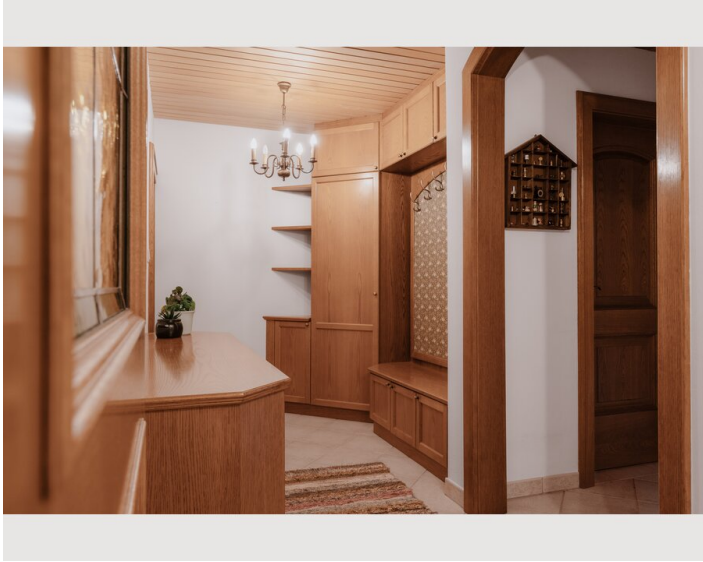
- Suitable for children
- Desk/Workplace
- Pets forbidden
- Bicycle room free of charge
- Smoking not allowed
- Private entrance
- Regular cleaning at extra cost

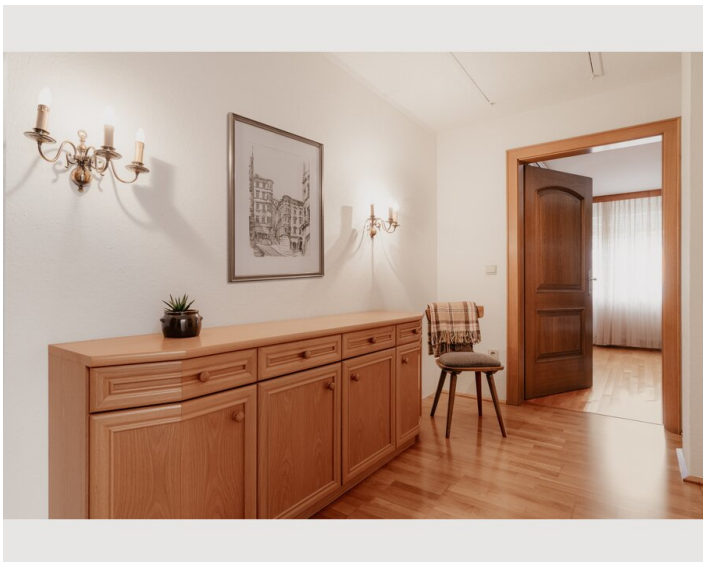
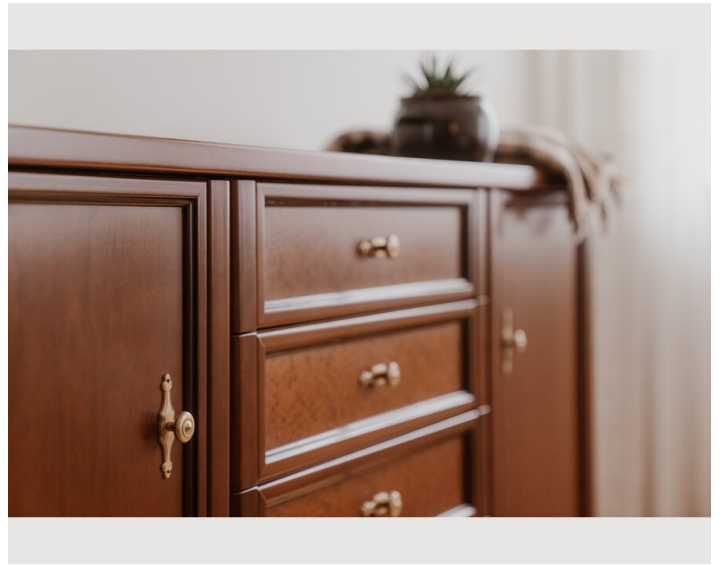
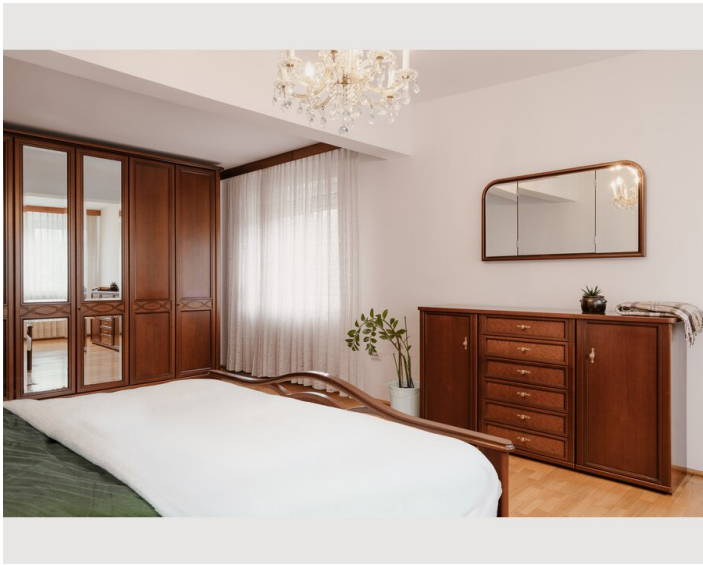
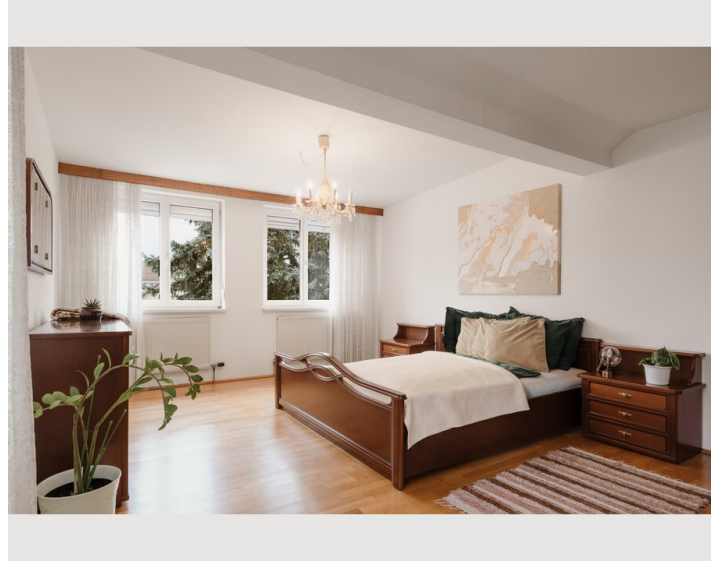
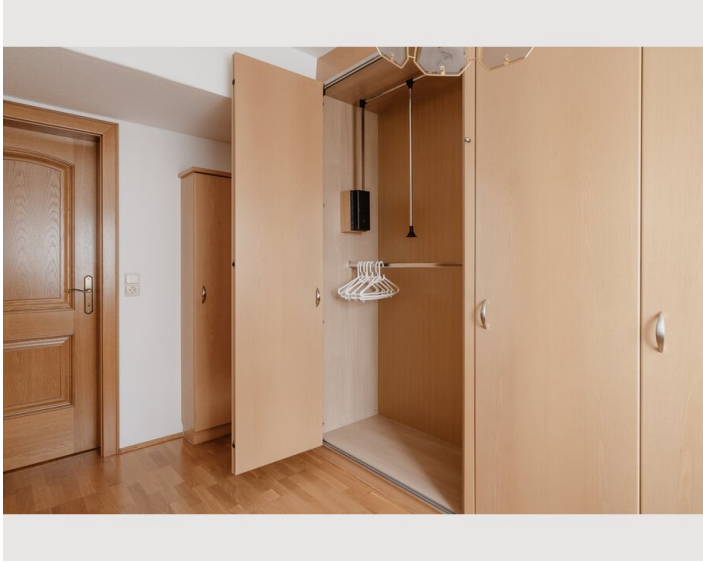
Picture gallery












Infrastructure

 Tram 3 min walking

 Supermarket 500 m walking

Location advantages:

- ▮ 3-minute walk to the Wimmerstraße tram stop, and 15 minutes by tram to the city center
- ▮ 10-minute drive to the industrial area (e.g. Voestalpine, Bosch, etc.)
- ▮ Supermarket 5-minute walk
- ▮ Adjacent to the Wasserwald (a wooded area) for jogging and walking

Location

