



2 ROOM APARTMENT, 1220 VIENNA

Modern & Bright – Rooftop Dream with 2 Terraces Near U1

Object number: DDMO1

[View and rent online](#)

Bright, modern attic apartment with two terraces and views of greenery, located in the 22nd district, only a 5-minute walk to the U1 subway line.

Period	01/05/ - 31/05/2026
Number of persons	2
Total incl. VAT.	€ 1.855,86
Security deposit	€ 1.400,00



Living space

42m²



Maximum occupancy

2 Persons



Complete accommodation [?]

1 Private bathroom 1 Separated bedroom 1 Living-Sleepingroom



3. floor

Elevator available



Check-in

15:00 - 19:00 Clock



Check-out

00:00 - 11:00 Clock

Sleeping options

Sleeping room



1x Double bed (1,80 m x 2 m)

Living & Sleeping



1x Sofa bed (1 person)

Descripton of accommodation

Two terraces – one lounge-style with views of greenery, the other ideal for breakfast.

Fully equipped kitchen with dishwasher and large refrigerator, living room with sofa bed and TV with Fire TV Stick.

Bright bedroom with terrace access, modern bathroom with washer-dryer.

Underfloor heating, electric blinds, and air conditioning.

Quiet location, 20 minutes to the city center, 10 minutes to UNO City and the Old Danube.

Equipment & Features

Basic equipment

- Balcony
 - Private washing machine
 - Bedclothes
 - Private toilet
 - Vacuum cleaner
 - Hairdryer
 - TV
 - Private dryer
 - Towels
 - Aircondition
 - Cleaning utensils
-

First supply

- Toilet paper
 - Nespresso capsules
 - Soap
-

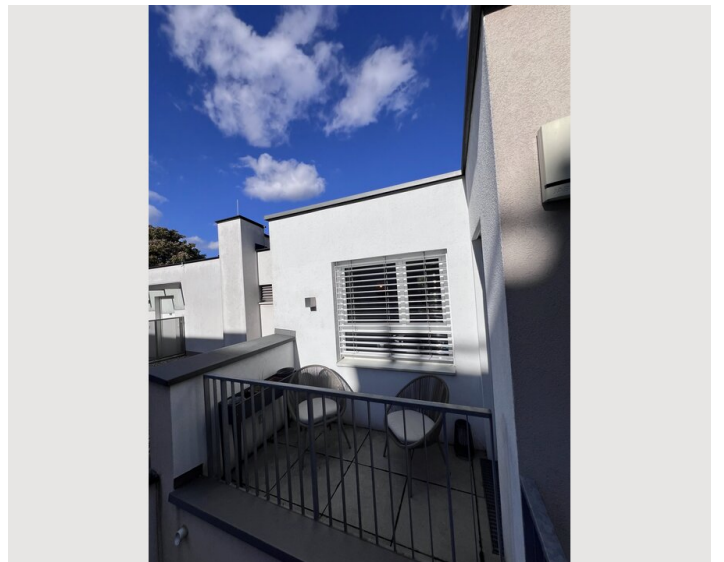
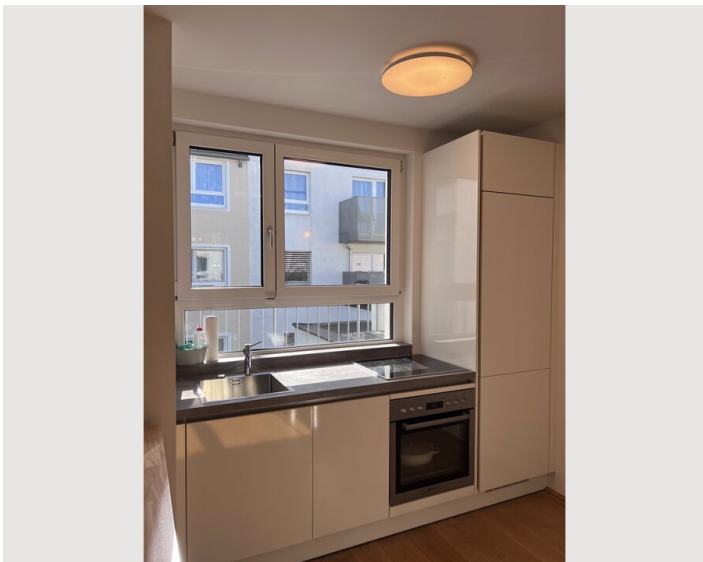
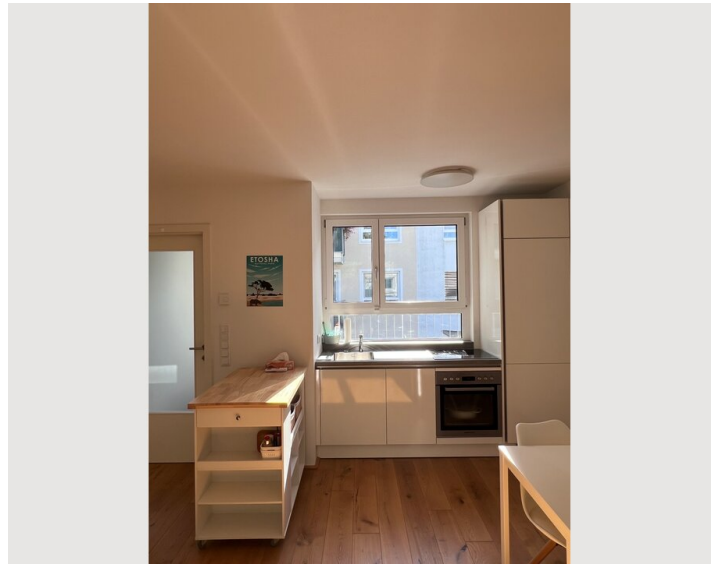
Kitchen

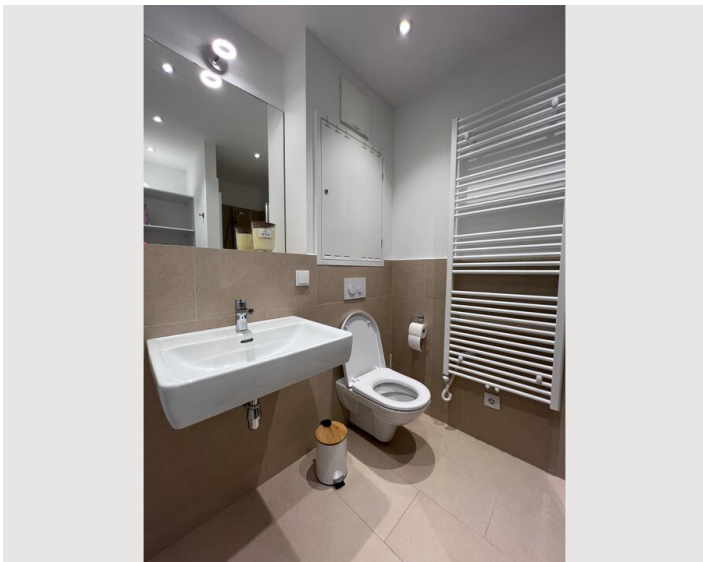
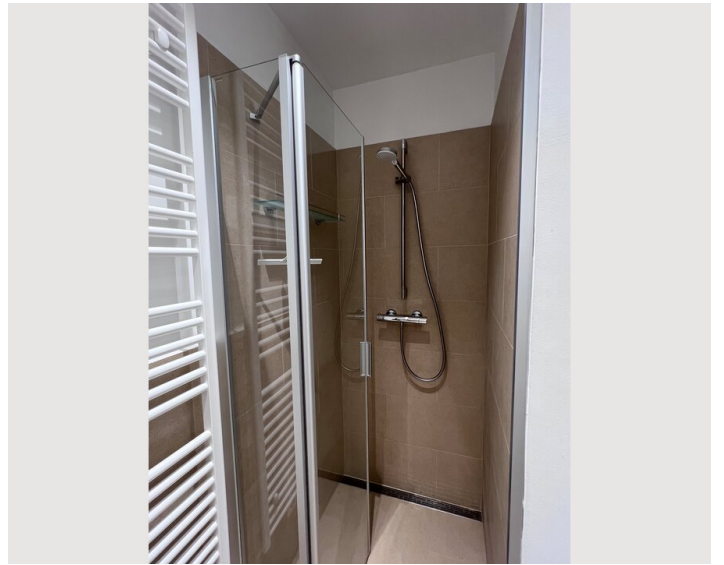
- Private kitchen
- Espresso machine
- Glasses/Tableware
- Dishwasher

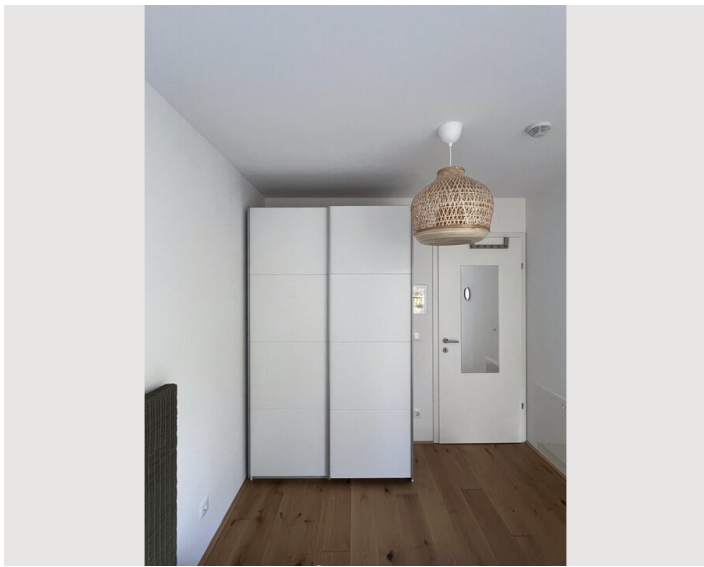
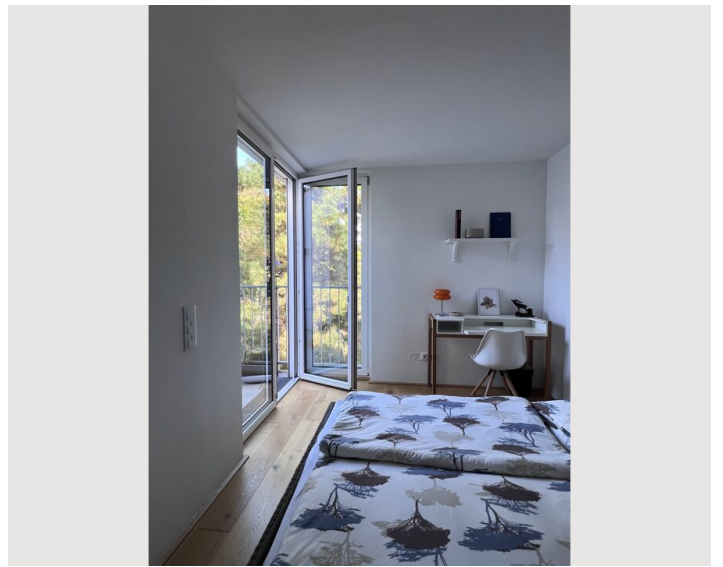
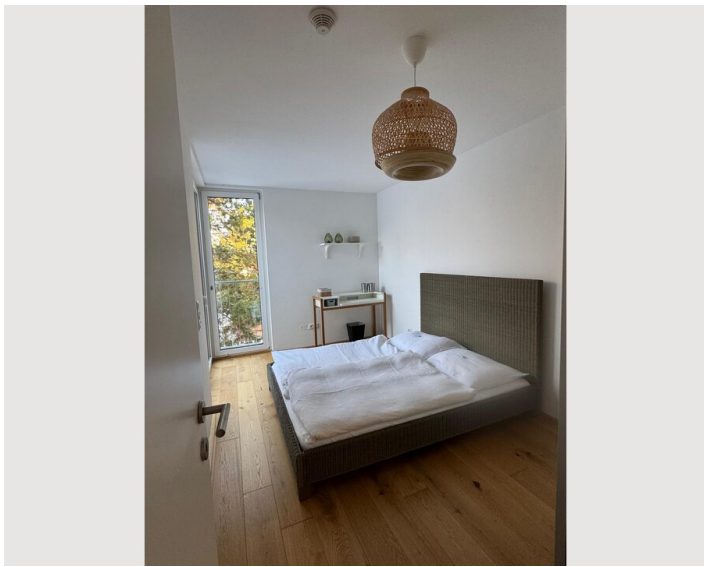
Informations

- Suitable for children
- Short-term parking zone subject to a charge
- Pets on request
- Bicycle room free of charge
- Smoking not allowed
- Desk/Workplace
- Regular cleaning at extra cost

Picture gallery







Infrastructure

📍 in 20 minutes with the U1 subway line

🛒 at least 3 grocery stores in 3 min walking distance

5-minute walk to the U1 subway line, 20 minutes to the city center, 10 minutes to UNO City and the Old Danube.

Location

