

2 ROOM APARTMENT, 1060 VIENNA

## Apartment for short-term living right next to the Raimund Theatre

Object number: ANDP4

[View and rent online](#)

2-room flat with style and charm in the 6th district right next to the Raimund Theatre

<b>Period</b>	31/05/ - 01/07/2026
<b>Number of persons</b>	2
<b>Total incl. VAT.</b>	€ 1.602,97
<b>Security deposit</b>	€ 1.200,00



### Living space

42m<sup>2</sup>



### Maximum occupancy

2 Persons



### Complete accommodation <sup>?</sup>

1 Private bathroom 1 Separated bedroom



### Ground floor



### Check-in

14:00 - 20:00 Clock



### Check-out

09:00 - 11:30 Clock

## Sleeping options

### Sleeping room



1x Double bed (1,40 m x 2 m)

## Description of accommodation

The ground-level flat is located in the middle of the 6th district, directly adjacent to the Raimund Theatre. The courtyard location with access to a small front garden with seating under a shady tree, extends the usable space.

Flat / suite / fittings: Weitzer parquet flooring (brushed oak, grey), heating (gas condensing system + condensing boiler from Vaillant); wall cupboard installation for clothes, household appliances, etc., washing machine INDESIT

WC, bathroom / fittings: Geberit concealed cistern with WC, electric bathroom radiator for towels, glass tile shower wall;

WC, bathroom / Hans Grohe shower armature, washbasin with drawer, shelf with illuminated mirror, towel rail;

Living room / furnishings: dining desk (160x80 cm) with natural stone top Guatemala-Verde, side table with floor lamp and wing chair, various chairs, serving trolley, TV, WLAN;

Living room with kitchenette / equipment: Nirosta kitchen plate with sink, BOSCH-2er induction plate, BOSCH dishwasher, AEG refrigerator, Nespresso coffee machine, kettle, toaster, cooking utensils, crockery, glasses, cutlery, etc.; TV, WLAN.

Living room with TV and WLAN / Equipment: TV set / LG ELECTRONICS 43 inch 4K Smart TV

Bedroom / equipment: box spring bed 140x200 cm, floor lamp, dressing table with chair and wall mirror, various shelves, text environment;

Living space: 42 sqm

01\_Vestibule / wardrobe / wall cupboards / 5 sqm

02\_WC / bathroom / 5 sqm

03\_Living room / kitchenette / 21.5 sqm

04\_Bedroom / 9.5 sqm

05\_Exit allotment garden / paved segment

Greening allotment terrace

## Equipment & Features



### Basic equipment

- Terrace
- Internet/Wifi
- Private washing machine
- Towels
- Vacuum cleaner
- Cleaning utensils
- Garden
- TV
- Bedclothes
- Private toilet
- Iron & ironing board



### First supply

- Toilet paper
- Soap
- shampoo
- Nespresso capsules



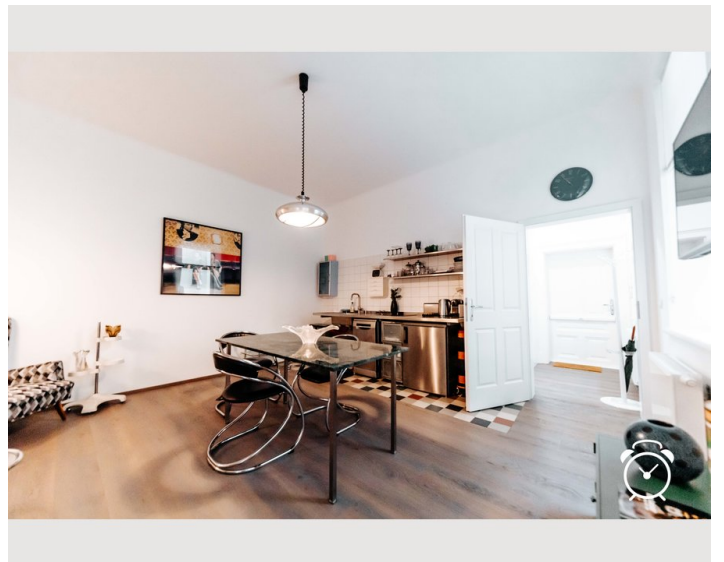
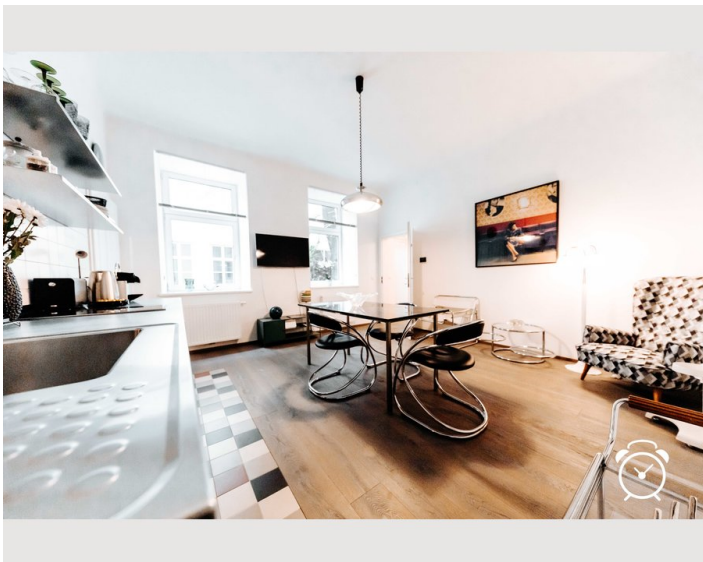
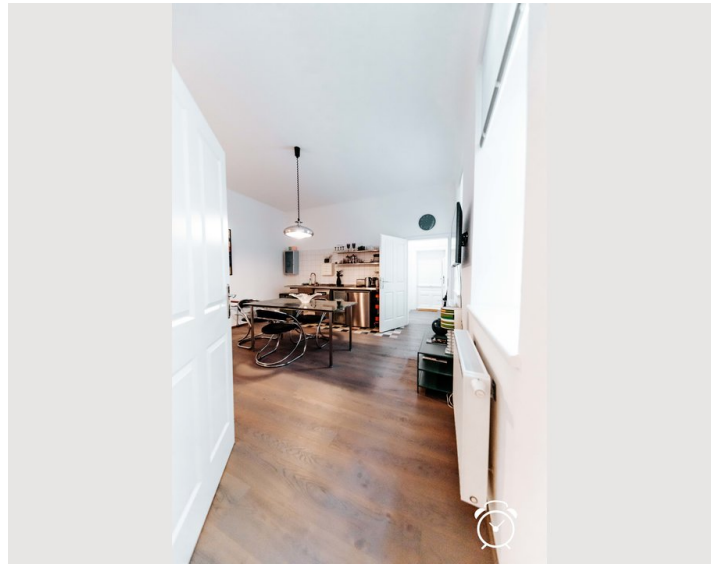
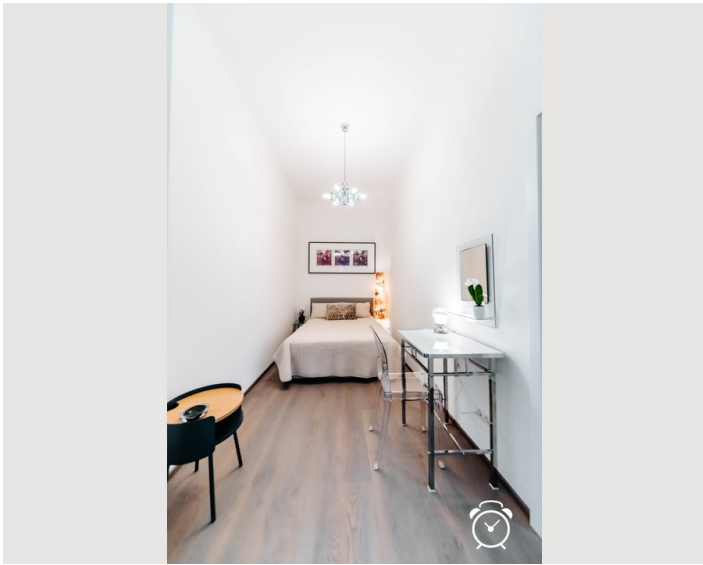
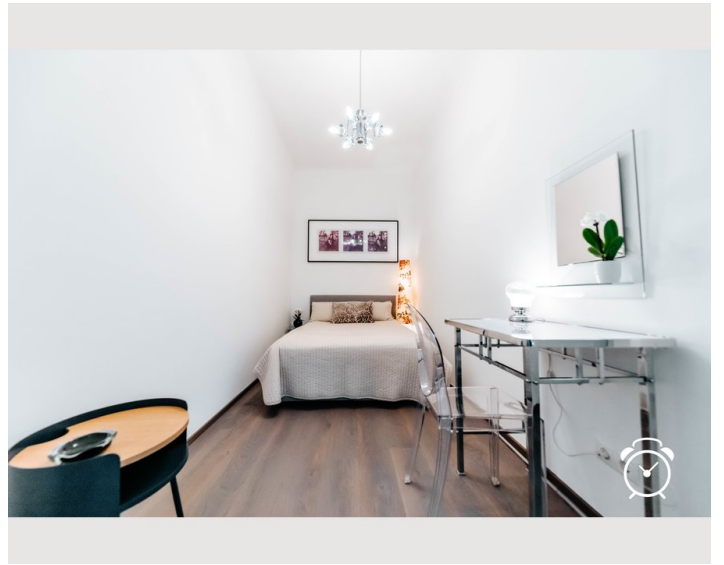
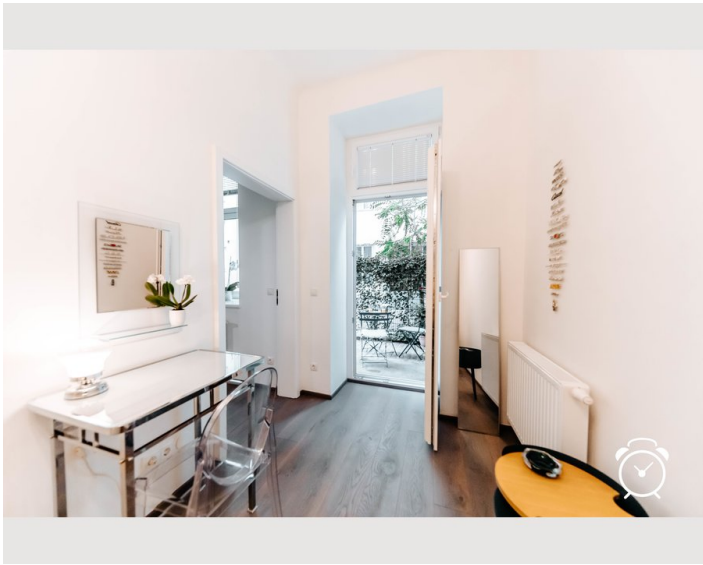
### Kitchen

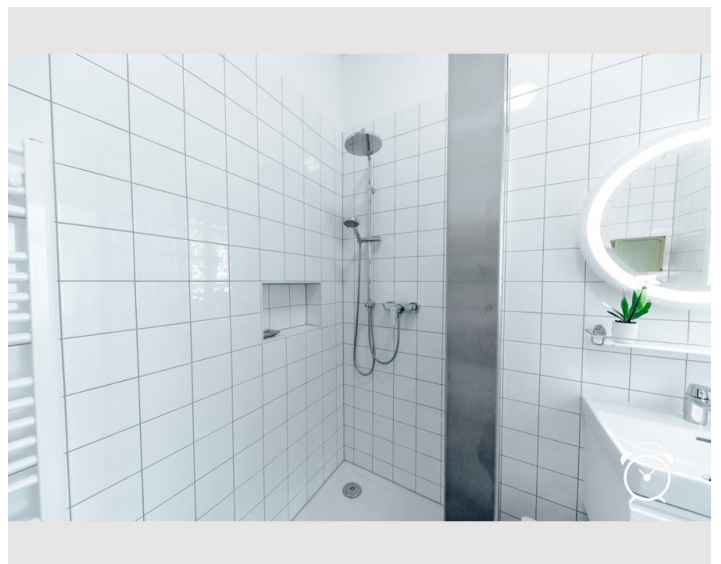
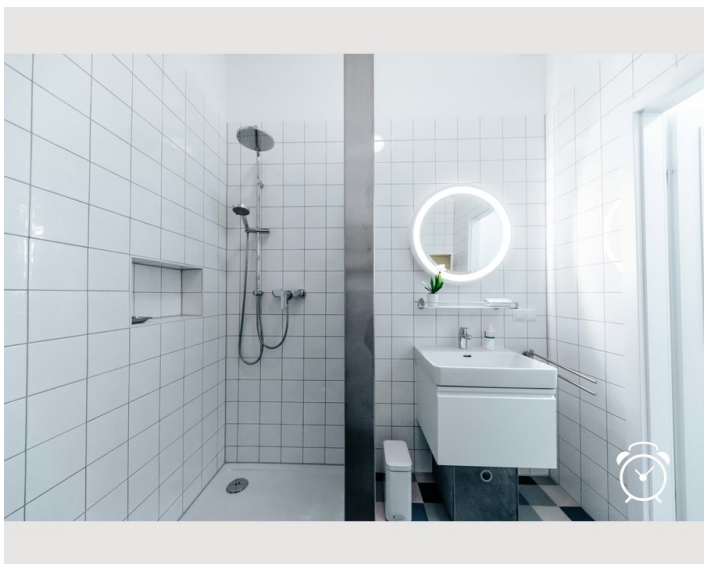
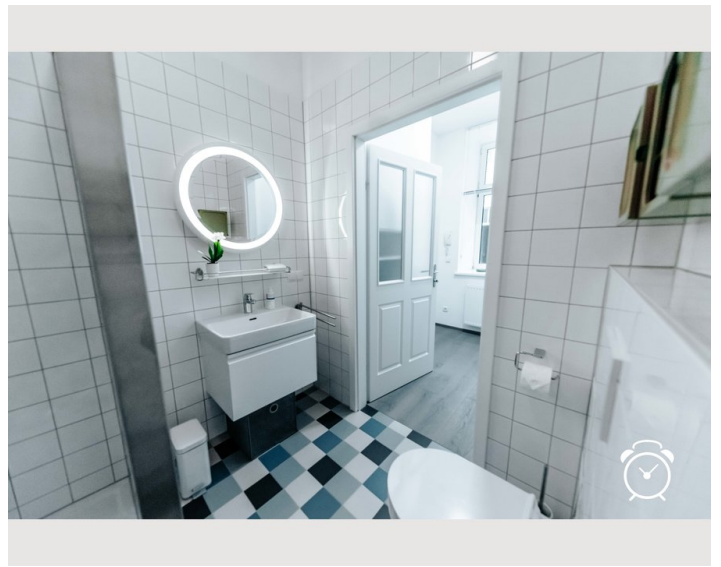
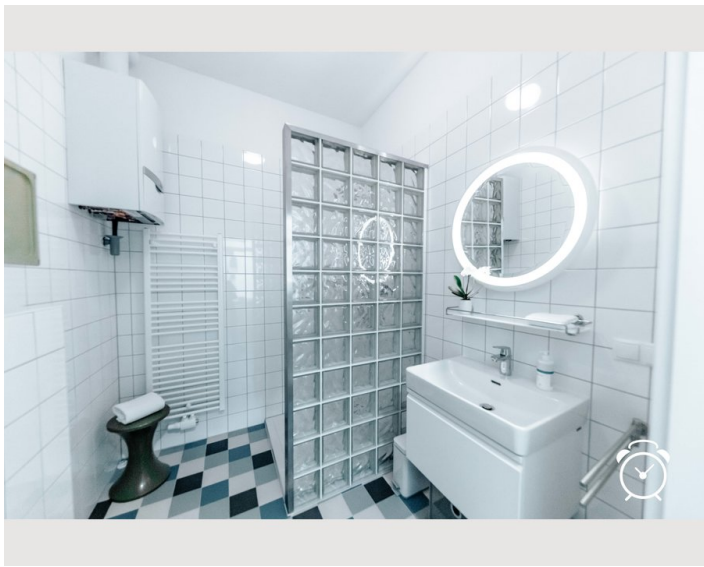
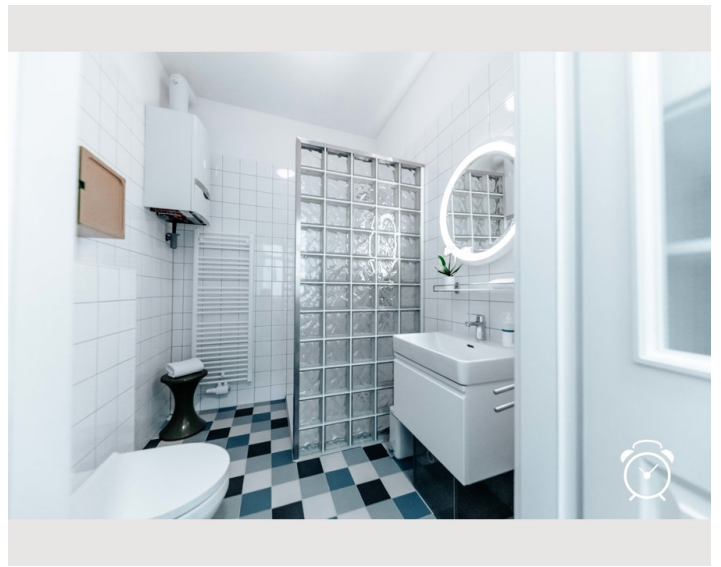
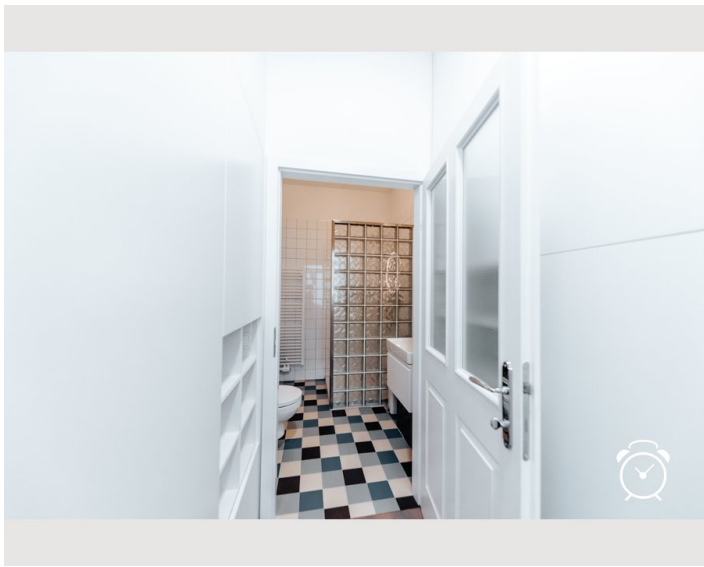
- Private kitchen
- Glasses/Tableware
- Dishwasher
- Cooking utensils
- Espresso machine

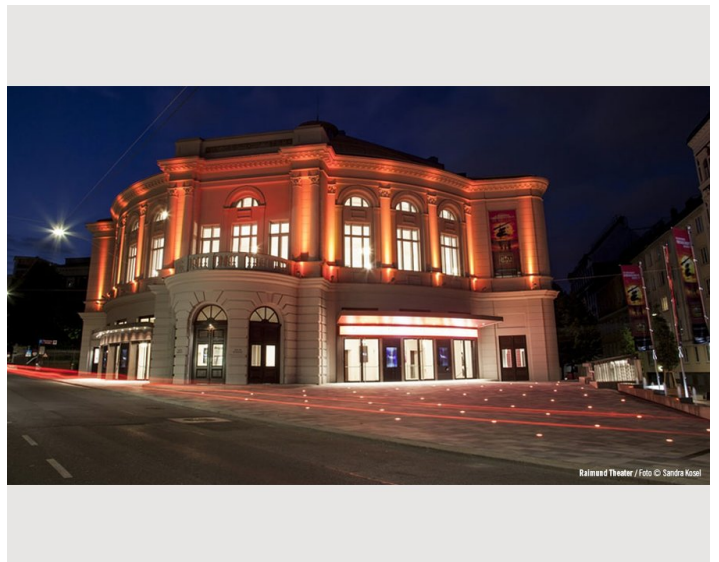
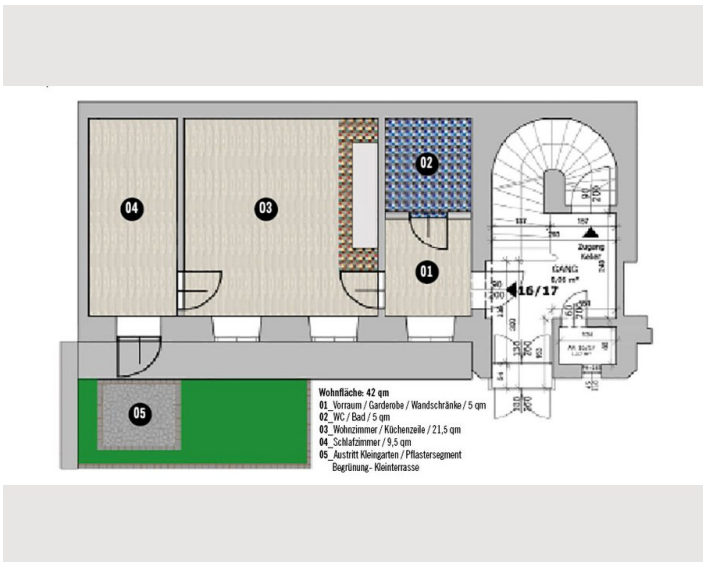
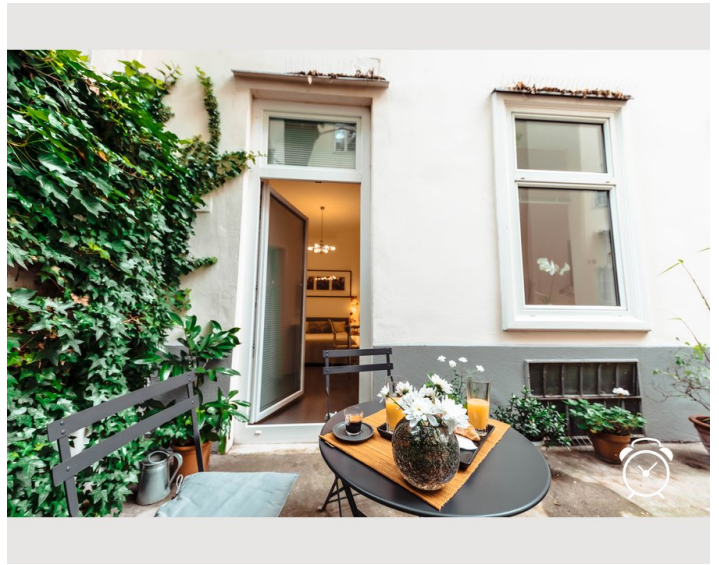
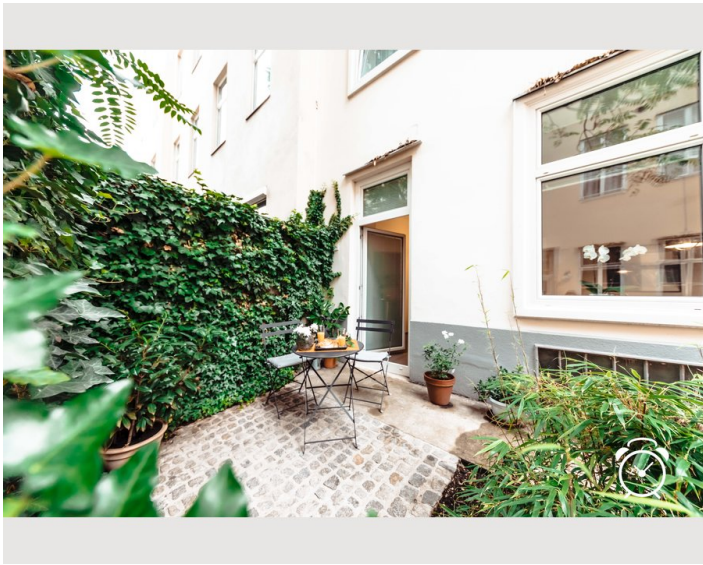
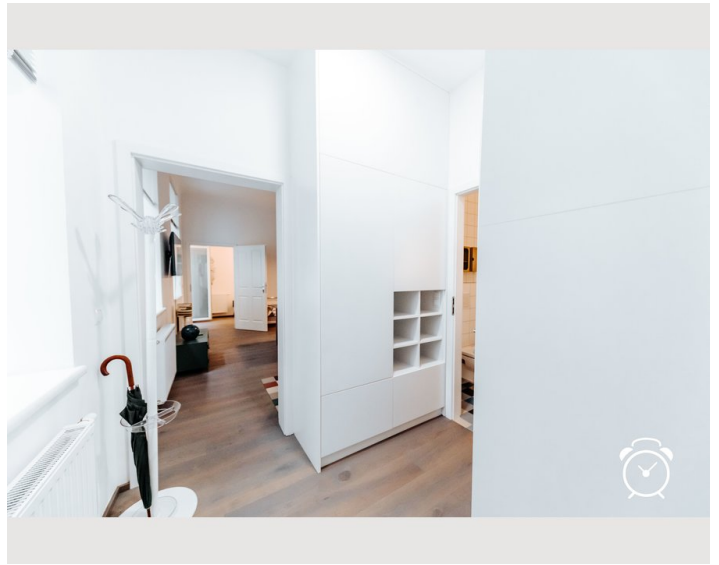
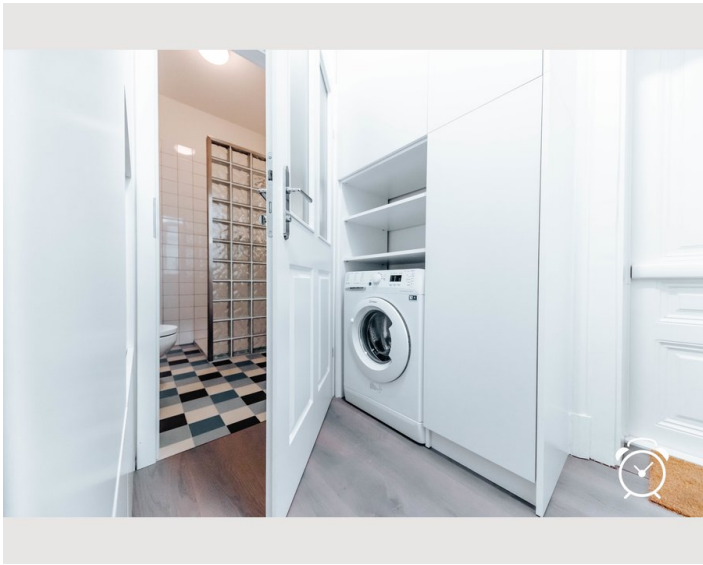
## Informations

- Short-term parking zone subject to a charge
- Pets on request
- Bicycle room free of charge
- Private entrance
- Regular cleaning at extra cost

## Picture gallery

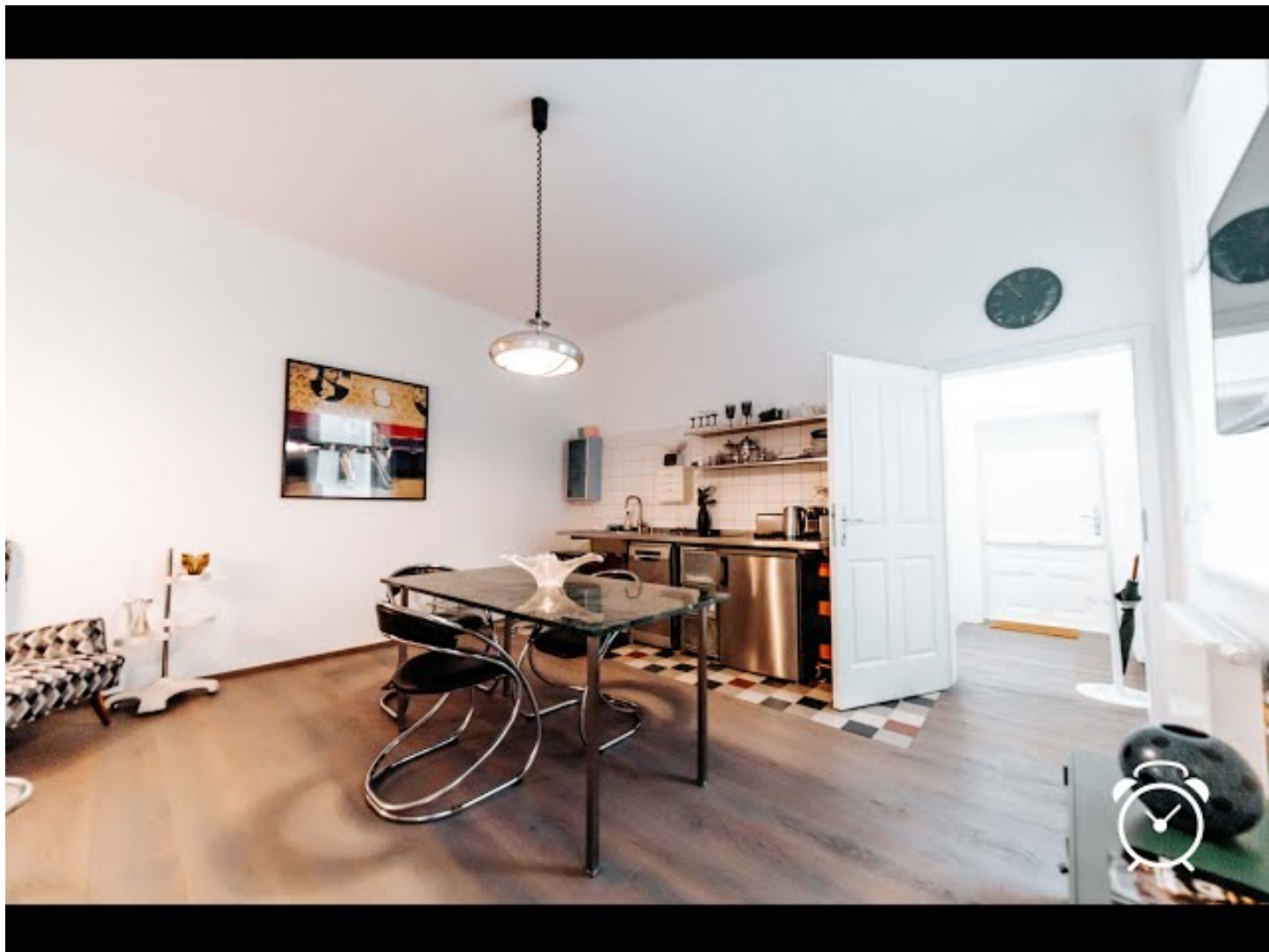






Video

Goto Video



## Infrastructure

🕒 app. 15 minutes by subway - U3

🚶 10 minutes by walk - Westbahnhof

🏠 app. 8 minutes by walk

🚗 45 minutes by public transport

🚇 U3 Westbahnhof/Mariahilferstraße 9 minutes by walk

---

The underground stations U3 (Mariahilferstraße/Westbahnhof) and U6 (Gumpendorferstraße) are within walking distance.

on foot. Pharmacy, post office, police, supermarkets in the immediate vicinity. Restaurants and cafes in the vicinity of the Raimund Theatre. In addition, Mariahilferstrasse is in the immediate vicinity and leaves nothing to be desired in terms of infrastructure.

## Location

