



STUDIO APARTMENT, 1120 VIENNA

All-in! Roofterrace Apartment next to Schönbrunn

Object number: GDC11

[View and rent online](#)

Located in the most beautiful part of Vienna, right next to Schönbrunn Palace, is the newly renovated penthouse apartment. With its two-story layout, this charming apartment is ideal for 2-4 people.

Period	02/05/ - 02/06/2026
Number of persons	2
Total incl. VAT.	€ 1.798,52
Security deposit	€ 1.300,00



Living space

42m²



Maximum occupancy

4 Persons



Complete accommodation [?]

1 Private bathroom 1 Living-Sleepingroom



3. floor



Check-in

00:00 - 00:00 Clock



Check-out

00:00 - 11:00 Clock

Sleeping options

Living & Sleeping



1x Double bed (1,40 m x 2 m)



1x Sofa bed (2 persons)

Descripton of accommodation

The apartment is a two-story studio apartment that was renovated a few years ago.

Its quiet location near Schönbrunn Palace and its convenient access to public transportation to the city center (20 minutes) make it ideal for guests who want to explore Vienna or are there on business.

The living area is bathed in morning sunlight, and the terrace offers the longest evening sun in Vienna with breathtaking views.

Upon entering, the foyer leads to a large walk-in closet (wardrobe including storage space).

The spacious bathroom features antique terracotta tiles, a toilet, a shower, and a washing machine.

From the foyer, you enter the living area with a large, open-plan kitchen, a dining table, a large sofa (which converts into a bed), a hammock (with hanging points), a flat-screen TV, free Wi-Fi, a radio/sound system, a rocking chair, and more.

A wide spiral staircase leads from the living room to the upper floor, the sleeping area and Terrace. From here, you can access the special terrace (approx. 14 sq m) with a breathtaking view over all of Vienna and a peaceful place to relax.

The terrace is furnished with a table, chairs, a lounge sofa, a parasol, a herb garden, flowers, and greenery in the summer. Barbecuing is also possible here.

The view faces north/west/east and extends to the vineyards of Vienna. This is arguably the best rooftop terrace for watching the impressive fireworks on New Year's Eve, and in summer, the sun shines here the longest, culminating in a stunning sunset!

The building is a typical Viennese period building with a newly converted attic, located in the most desirable part of the Meidling district (1120 Vienna), right next to Schönbrunn Palace, between the Gloriette entrance and the east entrance to the park.

... Public transport connections:

- Buses stop right around the corner, providing easy access to subway stations, train stations, etc.

- 8-minute walk to the U4 Meidlinger Hauptstraße or Schönbrunn stations

and approximately 6 minutes to the U6 Niederhofstraße station.

The neighbors on the same floor are very helpful and friendly. I also live very close by and am, of course, always happy to provide information, assistance, etc.

We look forward to being your hosts and wish you a wonderful stay!

Equipment & Features



Basic equipment

- Roof-terrace
- Internet/Wifi
- Private washing machine
- Towels
- Vacuum cleaner
- Cleaning utensils
- Garden sharing
- TV
- Bedclothes
- Private toilet
- Iron & ironing board
- Hairdryer



First supply

- Toilet paper
- Soap
- shampoo
- Fridge filling on request



Kitchen

- Private kitchen
- Glasses/Tableware
- Dishwasher
- Cooking utensils
- Espresso machine

Informations

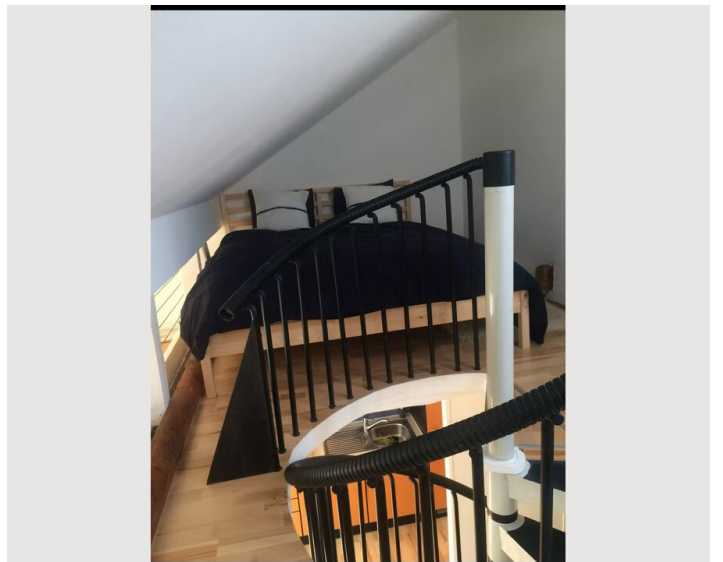
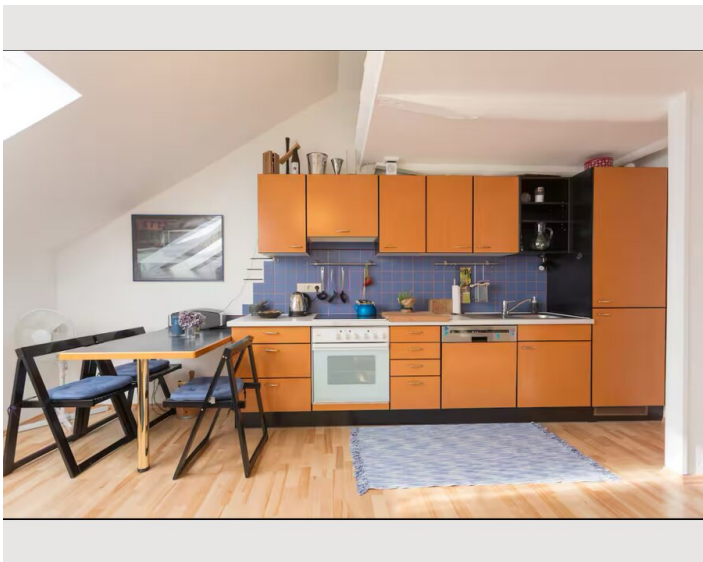
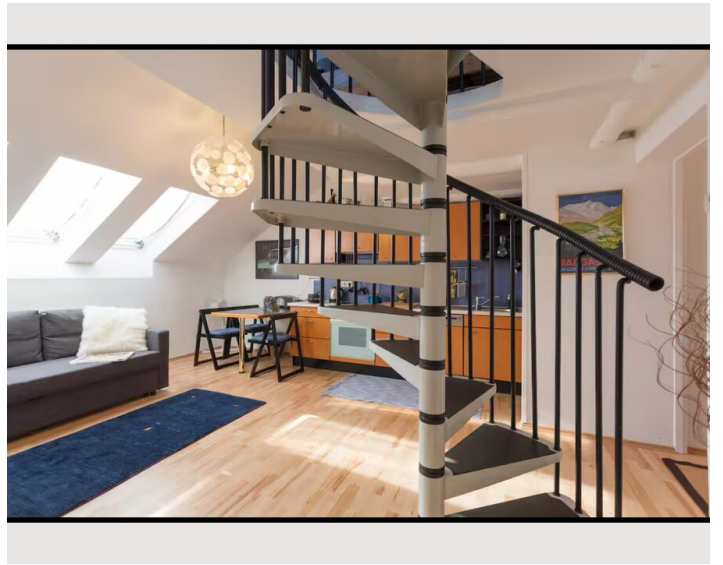
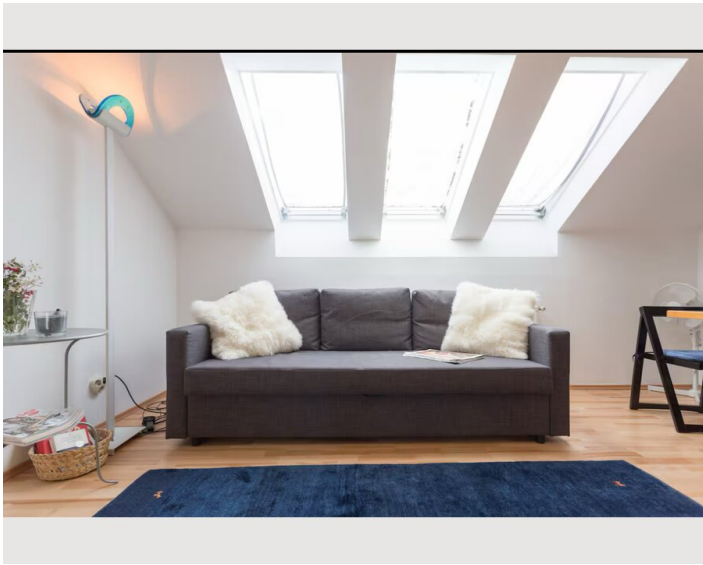
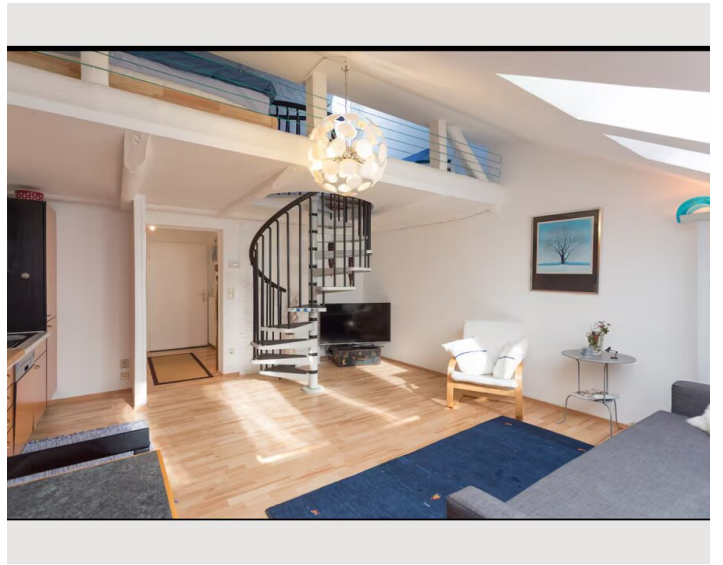
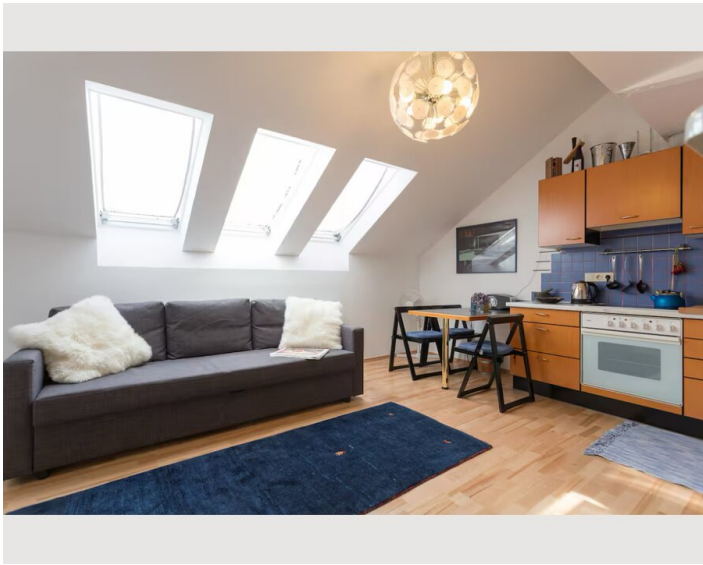
- Suitable for construction workers
- Short-term parking zone subject to a charge
- Regular cleaning at extra cost
- Suitable for children
- Pets allowed

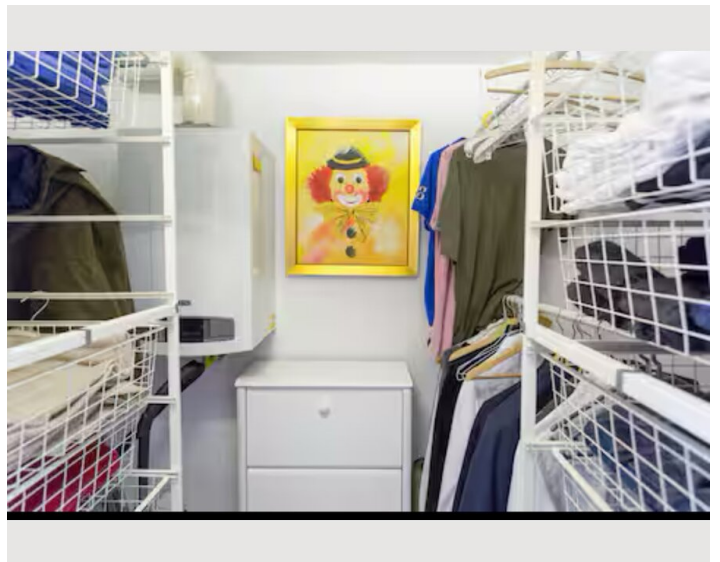
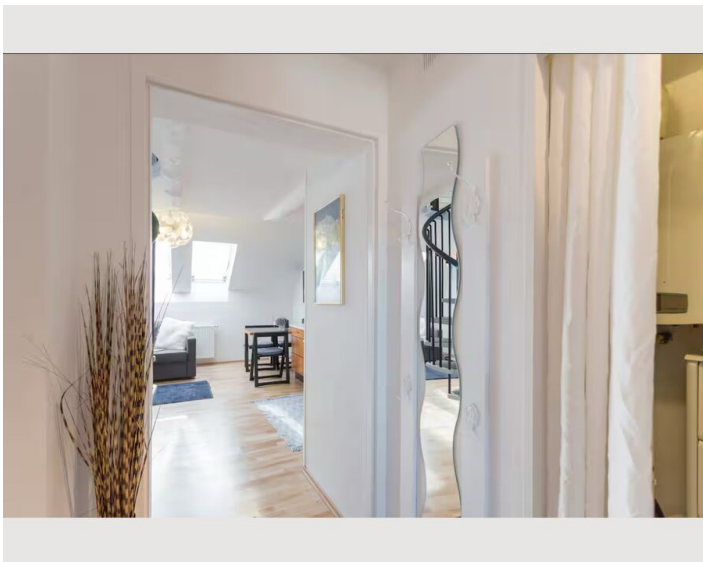
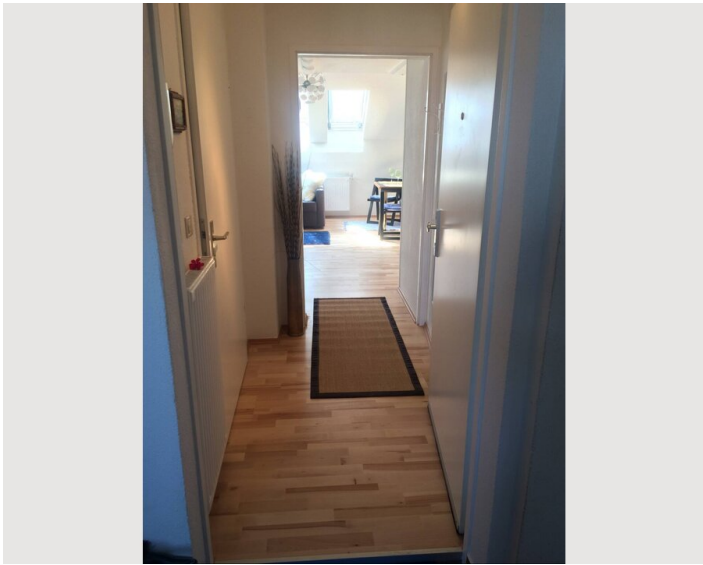
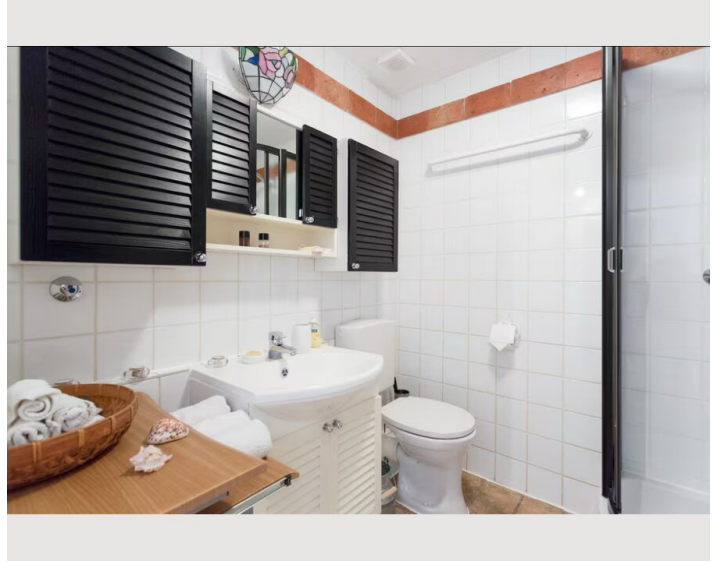
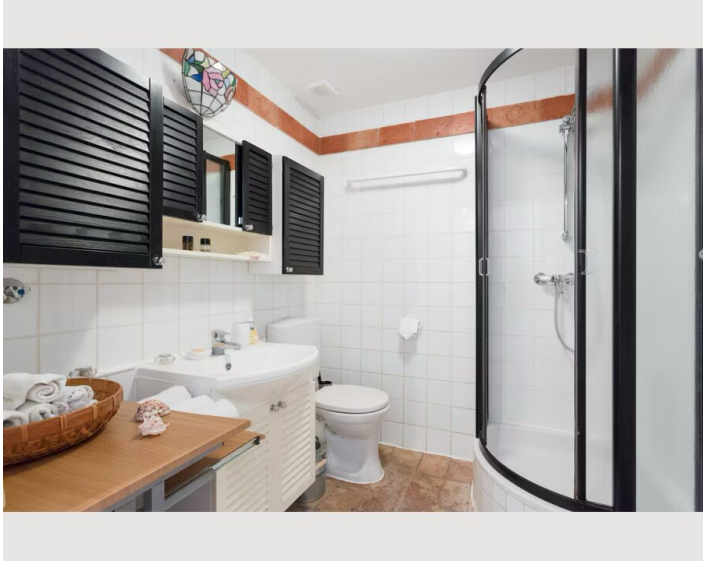
Additional services

- Weekly cleaning (€ 65,00)
- Ironing
- Laundry Service 25€/kg


All prices are gross per month - billing is done directly with the lessor.

Picture gallery








Infrastructure

 around the corner 1 min

 30min by car, 45min public transfer

 Station Meidling 13min walk, Main Station approx. 25min by public transfer, Westbahnhof/West Station approx 15min

 Around the corner (1min) and many in 5-7min walk

 20min with underground U4

The apartment is located on a quiet residential street, yet all essential shops such as a pharmacy, restaurants, grocery stores, bars, post office, banks, Meidling Market, shopping street, and cafes are within easy walking distance. Schönbrunn Palace, with its large park and rich history dating back to the imperial era, is just a 5-minute walk away.

All major public transportation options and connections are in the immediate vicinity of the apartment.

Swimming pools, outdoor pools, fitness centers,...

Location

