



2 ROOM APARTMENT, 5071 WALS

## Walser Apartments

Object number: WJL1

[View and rent online](#)

<b>Period</b>	22/05/ - 22/06/2026
<b>Number of persons</b>	2
<b>Total incl. VAT.</b>	€ 2.187,10
Security deposit	€ 1.700,00

directly (with direct bus) next to the Airport Salzburg (2km), to the city center Salzburg (6km) and to RedBull Arena Stadium (2km) Wals-Siezenheim as well as near the major highway hub Salzburg West (2km - direction to Italy, Germany Bavaria, Vienna)



### Living space

54m<sup>2</sup>



### Maximum occupancy

4 Persons



### Complete accommodation <sup>?</sup>

1 Private bathroom 1 Separated bedroom



### 1. floor



### Check-in

15:00 - 20:00 Clock



### Check-out

07:00 - 11:00 Clock

## Sleeping options

### Sleeping room



1x Double bed (1,80 m x 2 m)



2x Single bed



1x Children/baby bed



2x Sofa bed (1 person)

## Descripton of accommodation

directly (with direct bus)next to the Airport Salzburg (2km), to the city center Salzburg (6km) and to RedBull Arena Stadium (2km) Wals-Siezenheim as well as near the major highway hub Salzburg West (2km - direction to Italy, Germany Bavaria, Vienna)

## Equipment & Features



### Basic equipment

- Internet/Wifi
- Private washing machine
- Towels
- Private parking space
- Cleaning utensils
- TV
- Bedclothes
- Private toilet
- Iron & ironing board
- Hairdryer



### First supply

- Toilet paper
- Soap
- shampoo



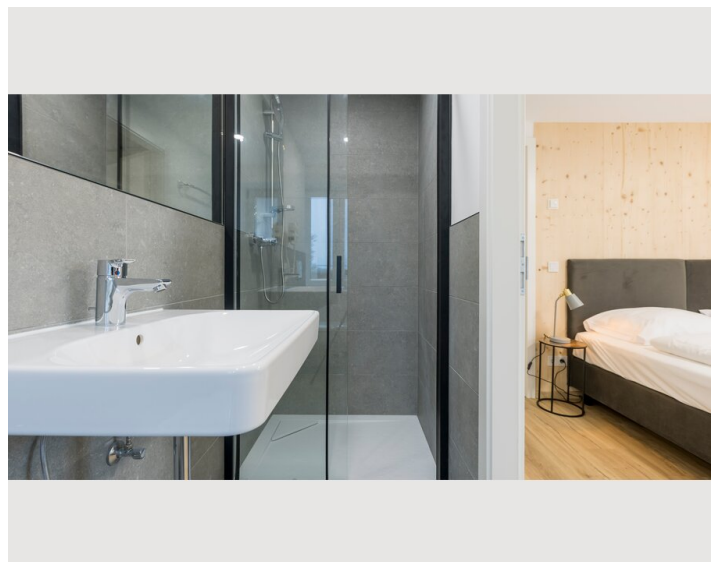
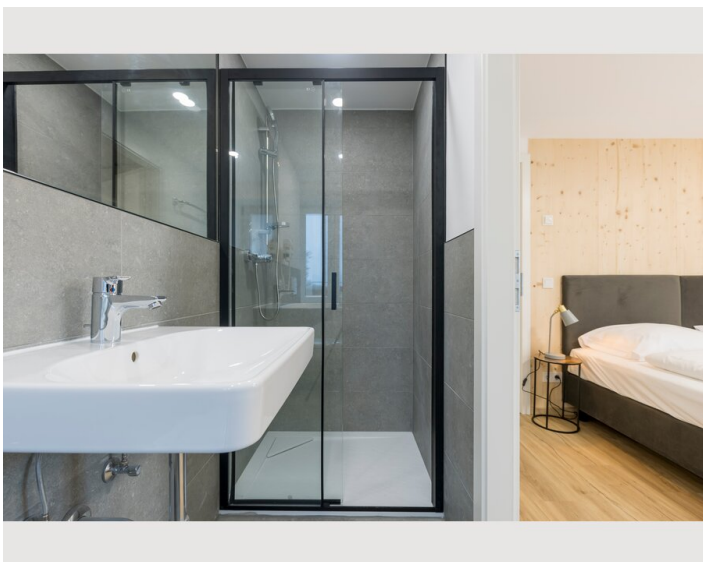
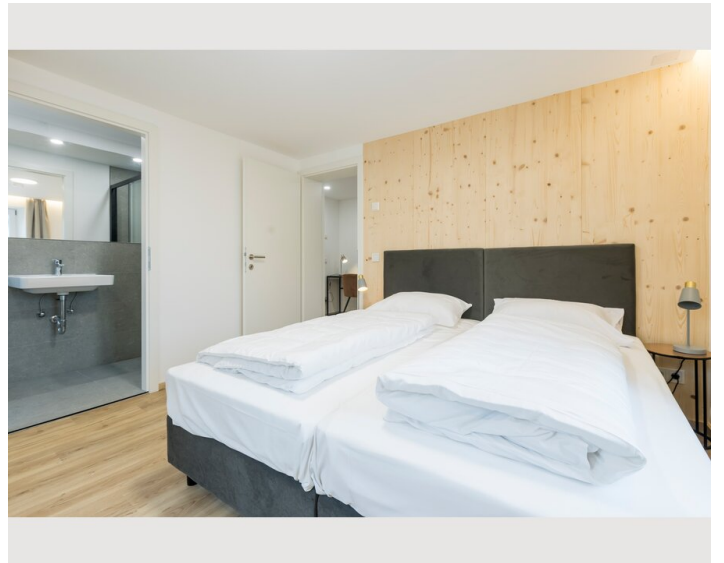
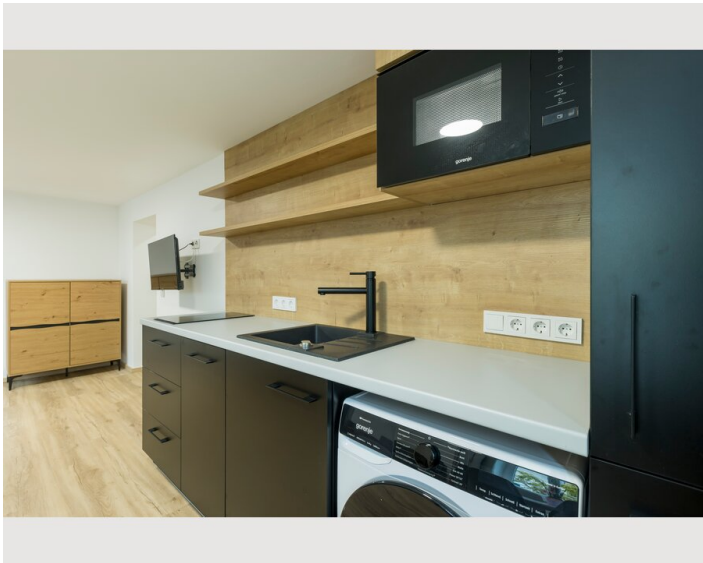
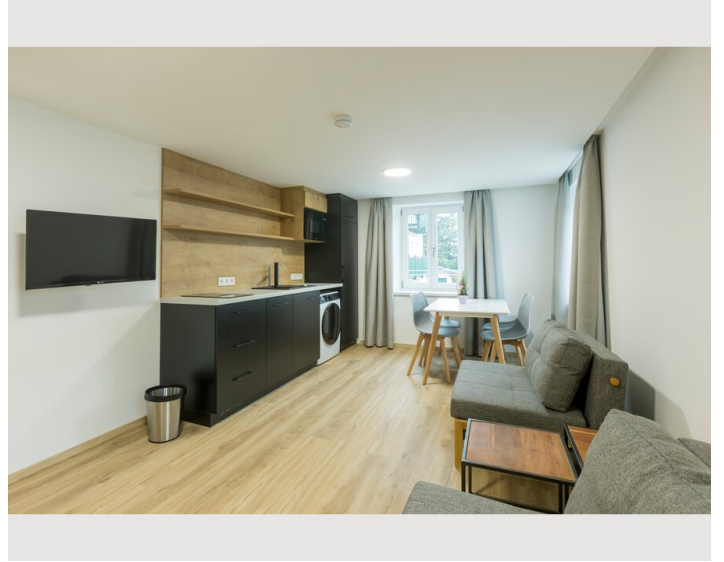
### Kitchen

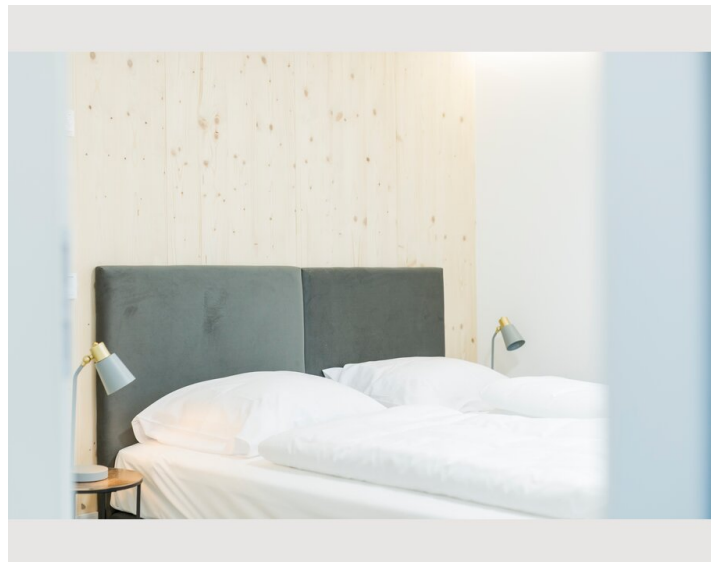
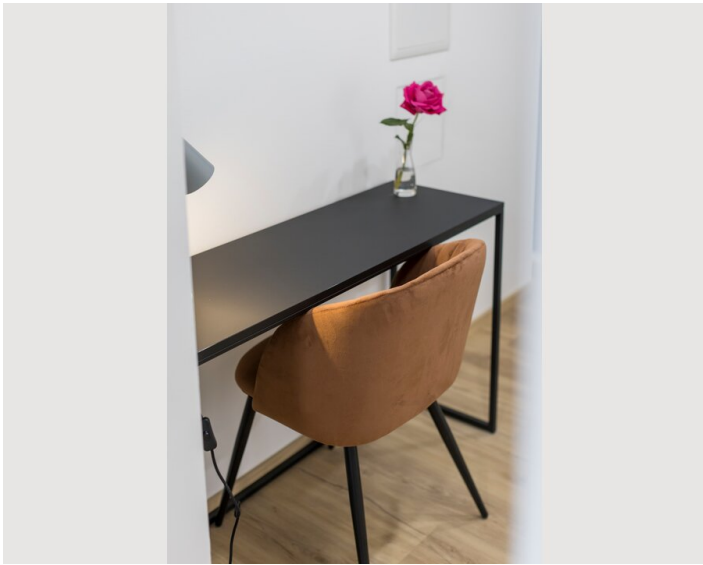
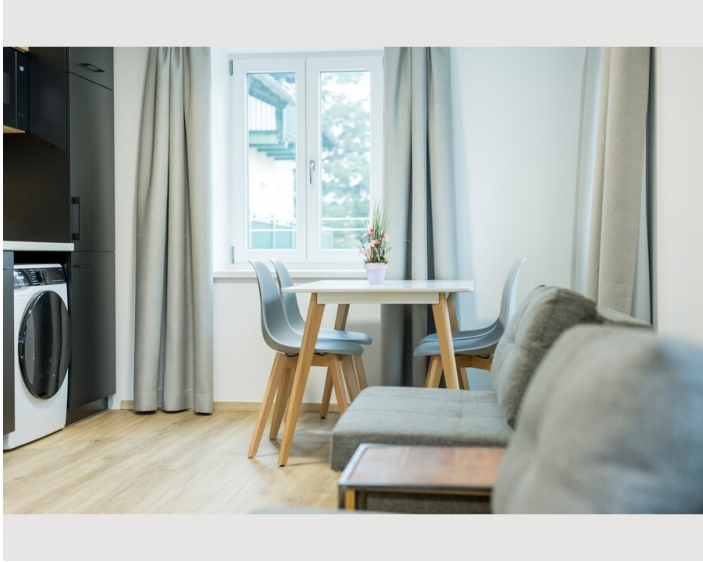
- Private kitchen
- Glasses/Tableware
- Dishwasher
- Cooking utensils
- Espresso machine
- Microwave

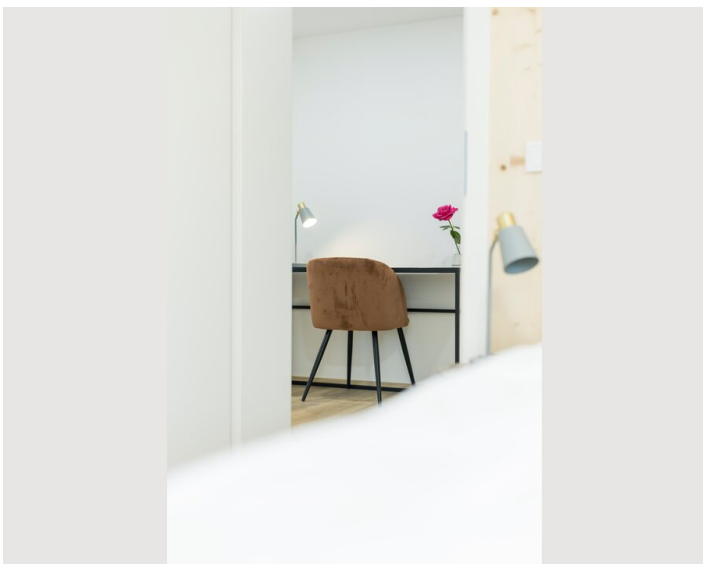
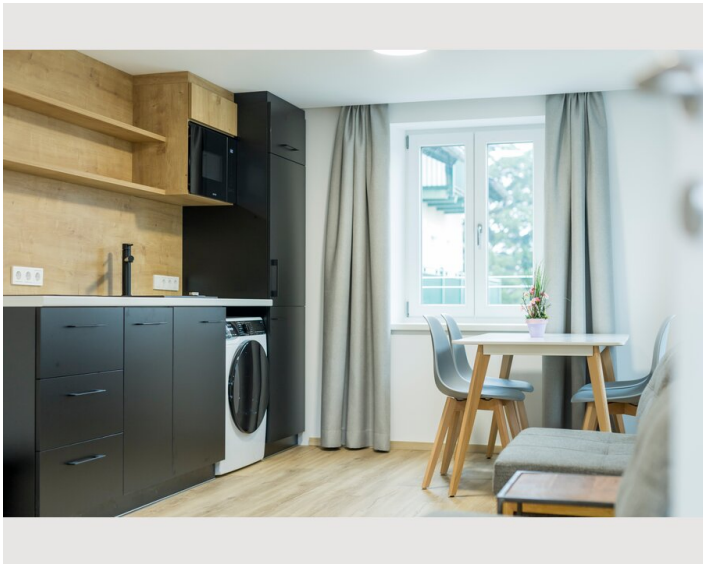
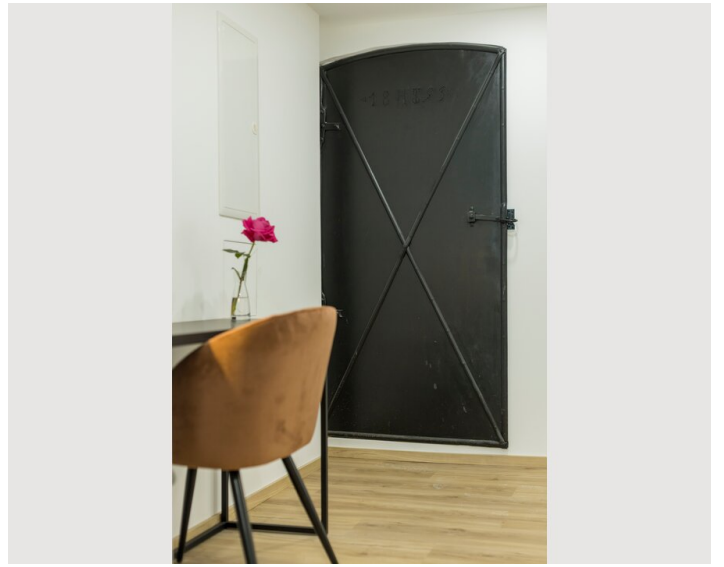
## Informations

- Suitable for construction workers
- Smoking not allowed
- Private entrance
- Suitable for children
- Desk/Workplace
- Pets forbidden


## Picture gallery









## Infrastructure

 No 180 - 20m next to the apartment

 5m away

 Airport Salzburg WAM - 2km away

 in the centre of Wals-Siezenheim

directly (with direct bus) next to the Airport Salzburg (2km), to the city center Salzburg (6km) and to RedBull Arena Stadium (2km) Wals-Siezenheim as well as near the major highway hub Salzburg West (2km - direction to Italy, Germany Bavaria, Vienna)

## Location

