

# Premium-Apartment Medium

Object number: IMMV38

[View and rent online](#)

<b>Period</b>	04/06/ - 04/07/2026
<b>Number of persons</b>	2
<b>Total incl. VAT.</b>	€ 2.885,24
Security deposit	€ 2.300,00



## Living space

39m<sup>2</sup>



## Maximum occupancy

4 Persons



## Complete accommodation <sup>?</sup>

1 Private bathroom 1 Separated bedroom



## Ground floor

Elevator available

## Sleeping options

### Sleeping room



1x Double bed (1,80 m x 2 m)



1x Sofa bed (2 persons)

## Descripton of accommodation

This beautiful apartment combines on its 39 m2 functionality and comfort for up to four people and is located on the 1st floor of an building with an elevator. The living/sleeping area features a comfortable couch which offers a sleeping possibility for two more guests. The double bed is nice and large a guarantees a good night's sleep. After a long day of sightseeing, you can relax while watching TV, listening to music or simply treating yourself to your favourite DVD and a glass of wine. And if you want to look up the current TV programm or check your email, you can use the wireless internet connection available free of charge .

The open kitchenette is equipped, apart from the basic amenities, with a microwave, dichwasher, so you can spend your valuable time on other things.

The dining area adjoins the kitchen and is furnished with a traditional dining table and four chairs so that you can enjoy all your meals together. The bathroom is modern and is equipped with a sink, toilet and a shower.

Depending on your mood, you can decide whether you prefer to cater for yourselves or eat outside. Supermarkets, shops and restaurants are only within a few minutes' walk from the apartment. Go for a long walk through the garden with the beautiful Belvedere Castle or stroll leisurely to the city center which can be reached in only about 10 minutes. Or simply take the tram line 71 from the stop "Fasanenplatz" and you will get to the Ring Road in just three stops. Stroll through the streets at the State Opera and St. Charles Church until you reach St. Stephen's Cathedral or visit the Spanish Riding School and the Naschmarkt, the biggest and best weekly market in the city. Thanks to the extensive network of public transport you can fast and easily reach the beautiful corners outside the center.

### Equipment & Features



#### Basic equipment

- Private toilet
- Dryer
- Internet/Wifi
- Bedclothes
- Community washing machine
- TV
- Towels
- Hairdryer



#### Kitchen

- Kitchenette
- Microwave
- Glasses/Tableware
- Dishwasher
- Coffee machine

### Informations

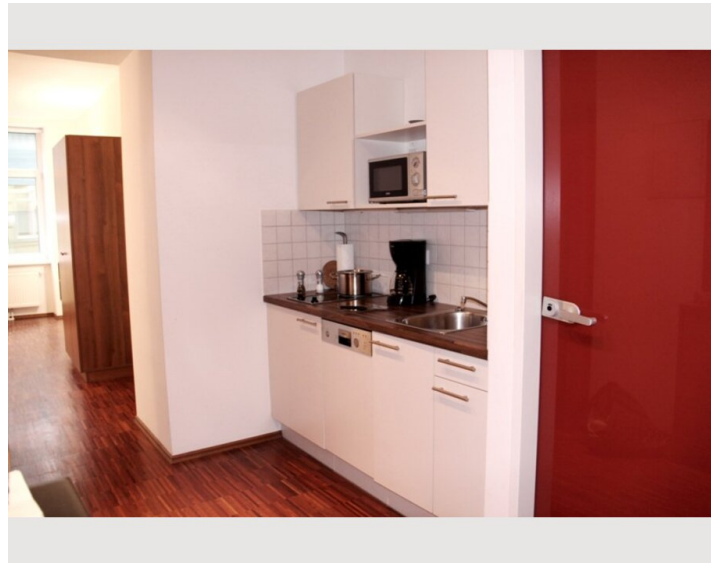
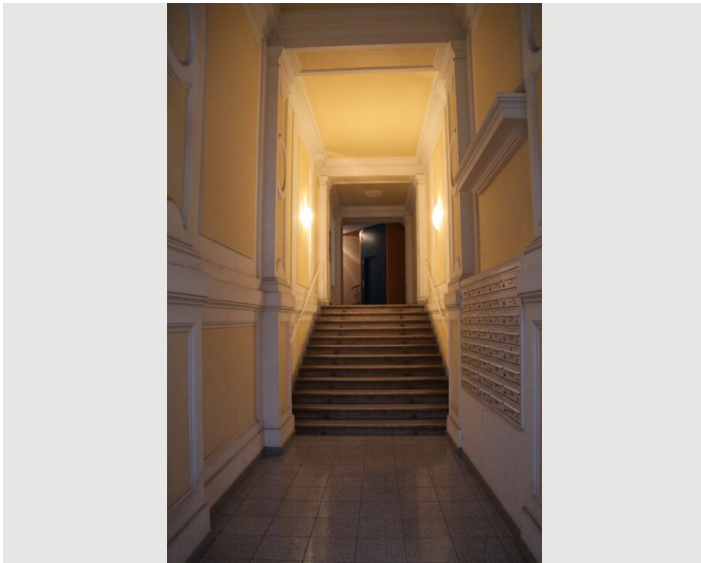
- Smoking not allowed
- Short-term parking zone subject to a charge
- Pets forbidden

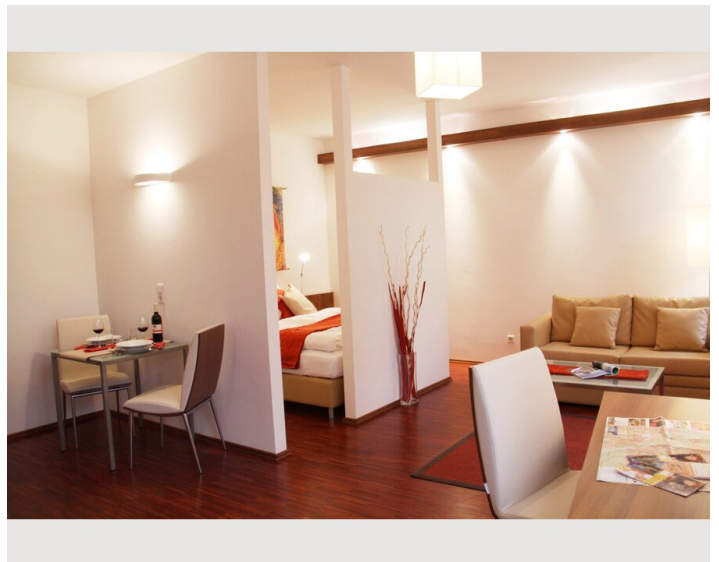
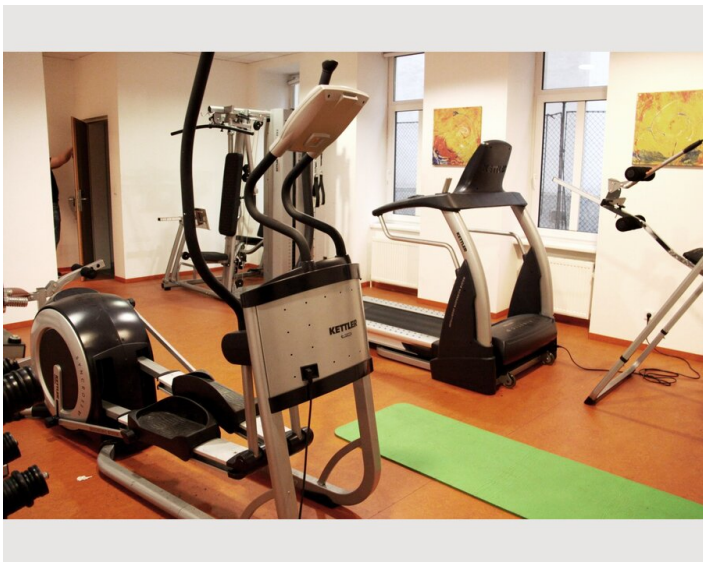
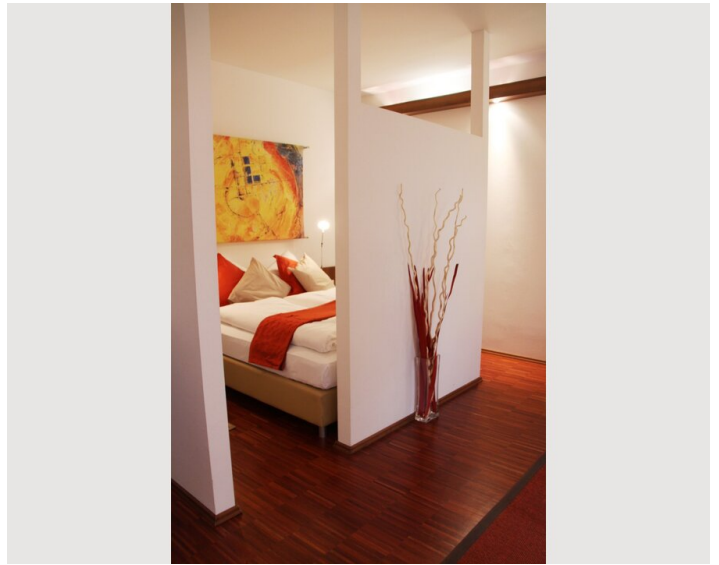
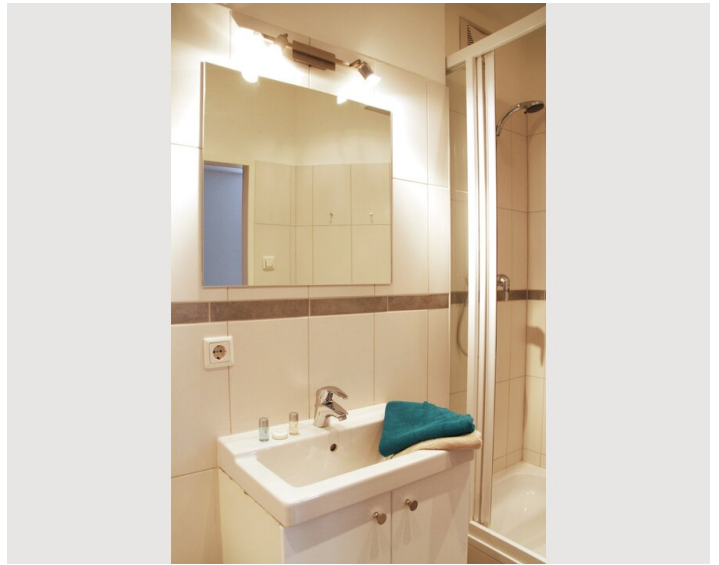
### Additional services

- Regular cleaning

All prices are gross per month - billing is done directly with the lessor.

### Picture gallery







## Location

